

# WATERFORD HILLS



## ROAD RACING • 1981



AUGUST \$1.00

### RACING RAIN OR SHINE

The peaceful hills of Waterford are being invaded... with a thundering army of sports cars, sedans and formula cars in fierce, wheel-to-wheel competition... and for 1981, we've assembled the largest field in our 23 year history! Watch over 130 top drivers battle it out in the finest racing machinery from American and Europe. Corvette, Porsche, Datsun. Everything from Capris to Camaros, McLarens to MGs. All together, fighting it out on a mile-and-a-half track with 13 right and left turns that twist up and down hills like no other road course in the U.S.A.

### WATERFORD HILLS 1981 ROAD RACING CALENDER

- May 16-17
- June 27-28
- August 29-30
- May 30-31
- July 25-26
- Sept. 26-27

### EASY ON THE WALLET

Admission is just \$2.50 for Saturday, \$4.00 for Sunday, or \$5.50 for the entire weekend. Children under 12 are always free and a Season Ticket is only \$20.00. The track opens at 10 A.M. for practice and qualifying. Racing begins at 1:30 p.m. on Saturday (seven races) and at 11:30 a.m. on Sunday (ten races). For more information phone (313) 623-0444.

### EASY TO GET TO

Chances are you live within a few minutes of the Midwest's premier road course. The W.H.R.I. Race Track is located just 6 miles north of Pontiac on Waterford Road, 1/4 mile east of Dixie Highway (U.S. 10) in Waterford, Michigan. The easiest route is to take I-75 to the southbound Sashabaw Exit. Take Sashabaw south to Pelton Road, then take Pelton west to Waterford Road. The total distance after exiting the expressway is 2 1/2 miles.

### GREAT SOUNDS IN THE HILLS

Published by Waterford Hills Road Racing Inc. 1981

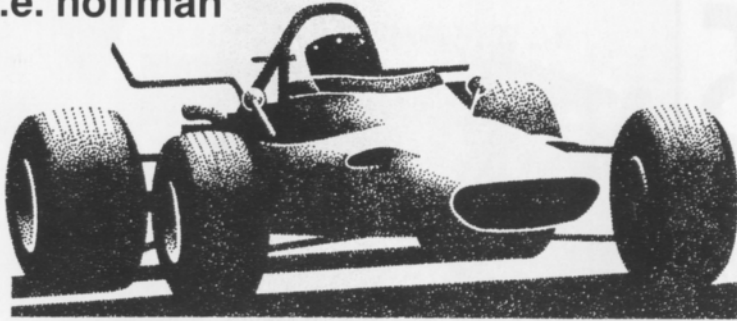






# the inside line

s.e. hoffman



Welcome to the annual August Sprints at beautiful Waterford Hills!

Several of the class races have tightened up, thanks to the exciting competition at our July Mid-Summer races. In the popular GT-1 class the Corvette of Doug Buist, red #61, is leading the "flying flag" #33 Vette of Don Burry by one point! The battling Mini's kept up their torrid pace with Ross Becker in #34 leading Bill Peake in #11 by six points with fast Dan Hill in #35 coming on strong at the end of the weekend! The FV race between Lee McLeod in #21 and Dennis Hamilton in #3 is still close as is the FF contest between Craig Horgas in #73 and Keith Averill in #31. The race for the overall top driver of the 1981 season is tied between Hugo Carlson in the brown Midget #57 and Ken Nelson in the silver Opel sedan #75. Couldn't ask for better!

A spectacular Formula Vee Feature race ended with Lee McLeod in #21 making a super drive to catch Dennis Hamilton in #3 at the finish line by a one-foot margin — less than the nose-cone! Lee made up forty car lengths he'd lost avoiding a spinning car and broke his father's old Vee record twice in the three laps to the checker, eventually dropping the record from a 1:16.5 to a 1:15.7. Lee is the first FV driver to officially break into the "15's"! A terrific race!

**We have some very special guests with us as the Michigan Street Rods return for the second time in three years to hold their state-wide meet with us. They put on a great show with their Sunday noon parade lap. Special thanks to all their members and to our driver, Dennis Stone of Spitfire #73, for organizing this fun event. Welcome to all of you!**

We would like to extend the apologies of radio station WRIF who contacted us last spring about a "day at the races". When we contacted them about the details, their station manager Bill

Jacobs felt they were over-extended this weekend and couldn't be with us. Maybe next season.

We would like to remind all of our race fans that they are most welcome to join with us in the many racing and worker groups it takes to keep our sports car racing such fun. You are invited to attend our monthly WHRRI club meeting in the clubhouse (log building) at the entrance to the Oakland County Sportsmen Club grounds. We meet the first Wednesday of every month at 8:00 p.m. See you there!

In the meantime, just sit back and enjoy this month races with us. Your cheers and applause mean so much to our drivers when they make that hard won victory lap!

**Next month we will have a special visit from the Ford-Mercury Club members who will be holding a parade lap on Sunday. Come back and help make their first visit to our club a happy one.**

Happy viewing!!

## officials

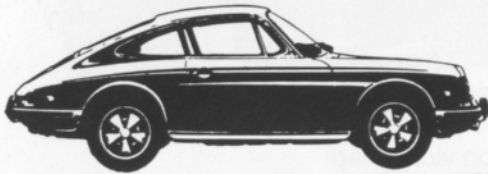
oakland country sportsmen's club president	art miracle
waterford hills road racing club president	don burry
chief stewards	john morris
	don clining
stewards committee	dan macdonald
	bill hallandal
	peter quenet
	tim evans
director of racing	joe prato
race coordinators	sue bogart
	dave shook
chiefs of timing and scoring	judy brown
	bill siess
chief of flags and communications	sue hoffman
chief of flags	dennis whitehead
chief of communications	chris maurer
chief starter	hal goff
assistant starters	gayle lash
	mickey matus
chief tech inspector	tony kunert
chief paddock marshall	bruce penbarthy
chief grid marshall	nancy waggoner
chief course marshall	mark nelson
chief registrar	mary shiloff
licensing chairman	jerry shiloff
membership chairman	judy davis
trophy chairman	anne roeske
la boutique	pat prato



689-4940

PIRELLI, MICHELIN & KLEBER TIRES

COMPLETE REPAIR SERVICE



- MERCEDES BENZ
- PORSCHE
- VOLKSWAGEN
- AUDI
- B-M-W

1725 E MAPLE RD (15 MILE) TROY  
1 BLOCK EAST OF I-75



# 25 MPG AND THE PERFORMANCE OF A BMW.

While the BMW 320i (with standard transmission) complies brilliantly with fuel-efficiency regulations, delivering 25 EPA estimated miles per gallon, 36 estimated highway mileage and, based on these figures, an estimated mpg range of 38.3 miles and a highway range of 551 miles, its extraordinary performance remains uncompromised.

(Naturally our fuel efficiency figures are for comparison purposes only. Your actual mileage and range may vary, depending on speed,

weather and trip length. Your actual highway mileage and highway range will most likely be lower.)

If the notion of a fuel-efficient car that's fun to drive intrigues you, call your nearest BMW dealer to arrange for a thorough test drive.

**THE ULTIMATE DRIVING MACHINE.**  
BMW, MUNICH, GERMANY



BMW 320i

© 1981 BMW of North America, Inc. The BMW trademark and logo are registered trademarks of Bayerische Motoren Werke, A.G.

Erhard Motor Sales Inc. 32715 Grand River Farmington 477-6400

SPORT & SPECIALITY RESTORATION  
color matching · collision repairs

FERRARI · ALFA ROMEO · MERCEDES · BMW · LOTUS · MG



ray's customs inc 682-3123  
w. bloomfield

## TIRE TRUEING

Goodyear  
Eagle NCT-GT  
We Beat Any Deal

B.F. Goodrich  
Radial T/A's  
Michelin TRX

8-8 Daily  
8-5 Sat.

13 Mile & John R  
Madison Heights  
585-6353

14 Mile-3Blks E. of Coolidge  
Royal Oak  
280-0202



# REDFORD SPEED EQUIPMENT

Of Special Interest

- SIDEMOUNT HEADERS
- ROLL BARS
- KONI SHOCKS
- SWAY BARS
- DRIVING LIGHTS
- COMP. SEAT BELTS AND HARNESES



RACING TIRES AND WHEELS

STEWART-WARNER INSTRUMENTS & FUEL PUMPS

### Other Necessities

- GENERAL KINETICS
- RACING CAMS
- LAKEWOOD
- HOLLEY CARBS
- TRANS AM OIL PANS
- RACING OIL
- HOOKER HEADERS
- HURST
- MALLORY & ACCEL
- IGNITION SYSTEMS



532-2050 or 532-6223

26486 GRAND RIVER 10-8 Mon-Fri 10-6 Sat



# CIBIE MARCHAL PARIS-RHONE

Manufacturers of Quality Automotive  
Performance Lighting Products  
And Electrical Components

St. Clair Shores, Mi. 48082

New, Used reproduction Parts and Accessories  
Custom Paint and Body Repair

**BOJAX**  
AMERICAN CORVETTE, LTD.



BOB FEHAN  
313/549-5410

4712 Fernlee  
1st Block East of Coolidge, S. of 14  
Royal Oak, Michigan 48073



photo by john willyard

## July 25/26 Race Winners class races

saturday				sunday			
Race 1	FV	lee mc leod	lynx	Race 1	FV	don kitch	zink
Race 2	GP GT-4	hugo carlson ross becker	midget mini	Race 2	FP GP GT-4	eric wold hugo carlson dan hill	spitfire midget mini
Race 3	FF	jon horgas	crossle	Race 3	FF	jon horgas	crossle
Race 4	EP FP	paul nawrocki gary humphreys	porsche midget	Race 4	GT-2 GT-3 SSA SSC	ken nelson jerry morlewski charlie henry mike white	opel fiat mustang rabbit
Race 5	GT-2 GT-3 SSA SSC	ken nelson jerry morlewski charlie henry mike white	opel fiat mustang rabbit	Race 5	ASR GT-1 DP EP GTX/SR	ed murray don clining ron mconkey paul nawrocki dave horchler	chevron corvette yenko porsche corvette
Race 6	ASR GT-1 DP GTX/SR	ed murray doug buist ron mconkey dave horchler	chevron corvette yenko corvette				

## feature races

<b>Race 1</b>			<b>Race 2</b>		
1st	lee mc leod	lynx	1st	ross becker	mini
2nd	dennis hamilton	lynx	2nd	dan hill	mini
3rd	john nolan	lynx	3rd	kirk carlson	midget
4th	larry bradley	green hornet	4th	ron cline	spitfire
5th	bill bowman	lynx	5th	bill peake	mini
<b>Race 3</b>			<b>Race 4</b>		
1st	jon horgas	crossle	1st	ed murray	chevron
2nd	keith averill	hawke	2nd	doug buist	corvette
3rd	agostino fabbri	lola	3rd	bob schneider	mallock
4th	dave shook	merlyn	4th	dave horchler	corvette
5th	cliff legg	nike	5th	don burry	corvette

photo by john gacioch



photo by john willyard



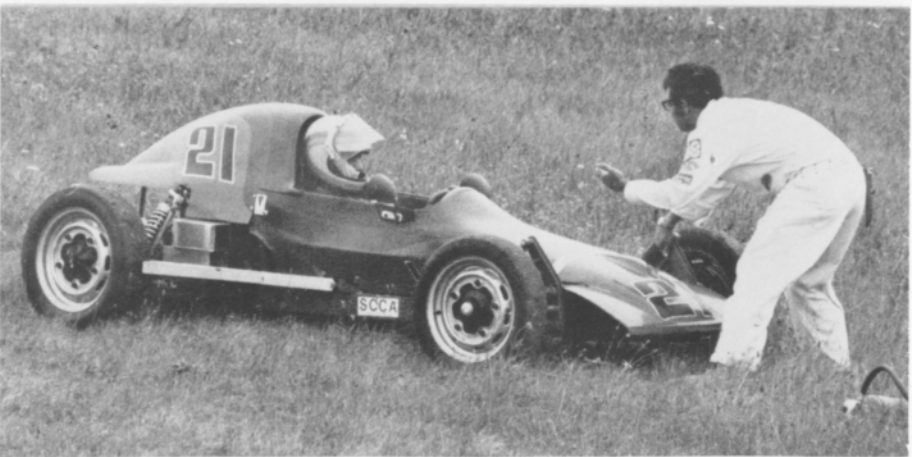
photo by john willyard

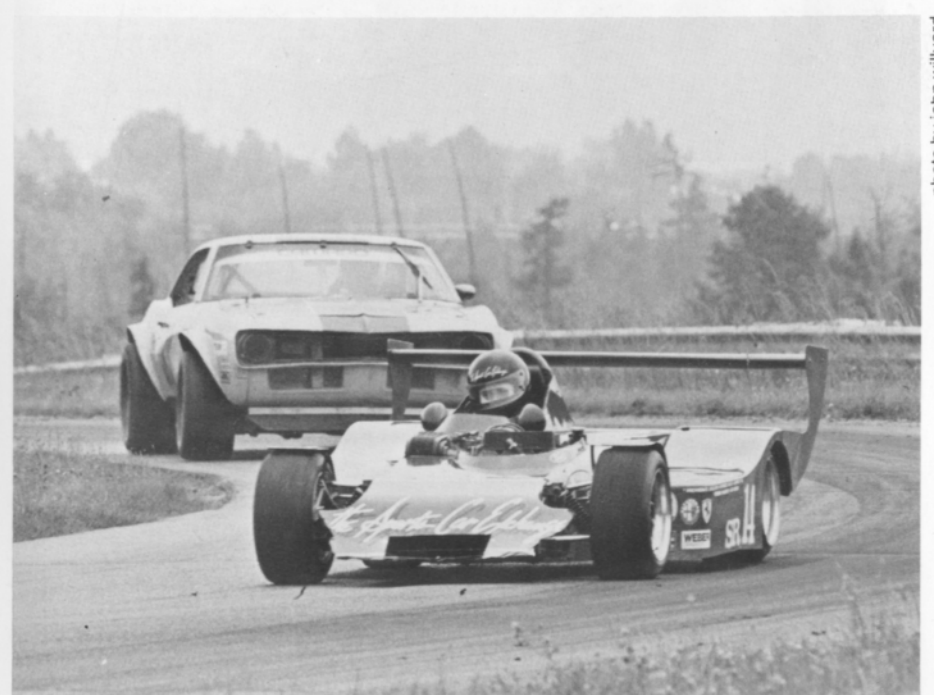


photo by john willyard











# winners circle

photo by john williard



**DON CLINING**  
GT1



**DON KITCH**  
FV

photo by john williard



**DAN HILL**  
GT4



**ERIC WOLD**  
FP

photo by john williard



**KIRK CARLSON**

GP

**HUGO CARLSON**

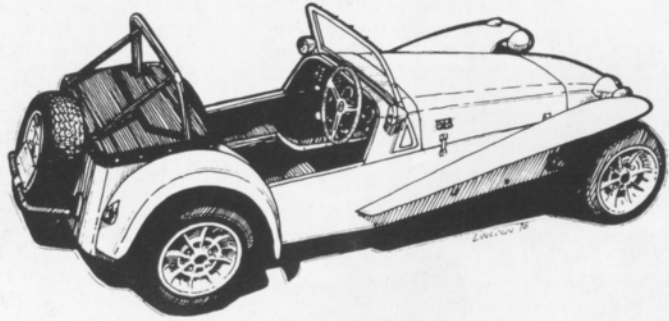


**RON LINDENSMITH**  
SSC

photo by john gacioch

photo by john gacioch

photo by john williard



## the sponsors







**our deepest sympathy  
to randy black's saab  
sonnet whose motor  
expired in july**



photo by john williard



**Accessory  
House inc.**

**313-548-4488**

**2325 Woodward, Ferndale mi. 48220**

<b>Exhaust Systems</b>	<b>Quartz Lighting</b>	<b>Racing Equipment</b>
Ansa	Hella	Bell
Monza		Yankee
<b>Seating</b>	<b>Suspension</b>	<b>Rollbars</b>
Recaro	Koni	<b>Air Dams</b>
	KYB	

**Stewart Warner Instruments**

**Vast Selection      World's Finest Manufacturers**  
**Import Auto Adornments      For The Discriminating Driver**



photo by al bizer

(313) 542-6150

**FOREIGN AUTOMOTIVE SUPPLY, LTD.**  
PARTS FOR ALL IMPORTS

**HOURS: MON.-FRI. 8:30-7:00      380 W. 11 MILE RD.**  
**SAT. 9-5      (5 BLKS. EAST OF THE I-75)**  
**MADISON HEIGHTS, MI 48071**

\* ALFA ROMEO \* AUDI \* AUSTIN \* DATSUN \* FERRARI \* FIAT \*

PORSCHE \* M.G. \* RENAULT \* SAAB \* VOLVO

## FOREIGN CAR SPECIALISTS



## AUTOMETERIC BODY SHOPS

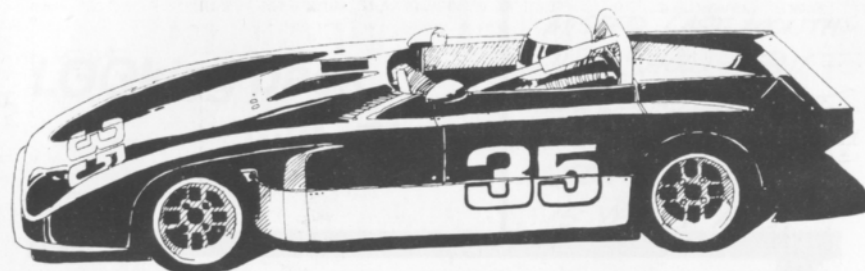
Expert Collision & Paint Service  
American .. Import

8645 E. 10 Mile      757-7491      Centerline, Mi.  
24465 Gratiot      774-3455      East Detroit, Mi.

MASERATI \* M.G. \* MERCEDES-BENZ \* OPEL

\* OPEL \* PORSCHE \* RENAULT \* SAAB \* SUBARU \* TOYOTA \*

art by clark lincoln

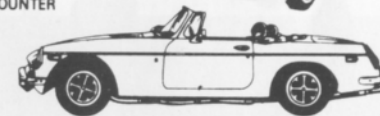


## IMPORTED CAR SERVICE CO.

Call 293-5566

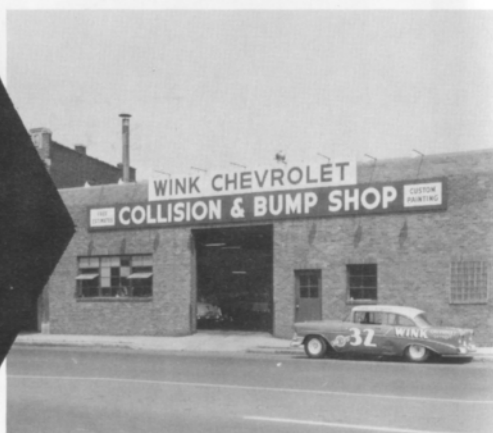
31529 UTICA RD., FRASER  
BET. 13 & 14 MILE

- LET OUR TRAINED PERSONNEL SERVICE YOUR CAR
- LOCAL REFERENCES
- PARTS COUNTER



# THINK WINK

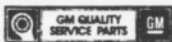
## CARS & TRUCKS



Satisfying Car Buyers For Over 42 Years

## BILL WINK CHEVROLET

10700 FORD RD., BET. WYOMING & SCHAEFER  
DEARBORN, MICHIGAN



## 582-5400

"KEEP THAT GREAT GM FEELING WITH GENUINE GM PARTS"

## RAGELAND AUTO SUPPLY

SPECIALISTS IN ALL PHASES OF

### HIGH PERFORMANCE WORK

COMPLETE LINE OF BRAND NAME &  
CUSTOM PARTS & ACCESSORIES

### COMPLETE MACHINE SHOP

• ENGINE BLUEPRINTING • BALANCING (ALL WORK DONE IN OUR OWN SHOP)

PLYMOUTH

455-4050

347 N. MAIN BETWEEN  
ANN ARBOR TRAIL & MILL

SOUTHFIELD

355-2288

26700 W. 8 MILE RD.  
BET. INKSTER & TELEGRAPH

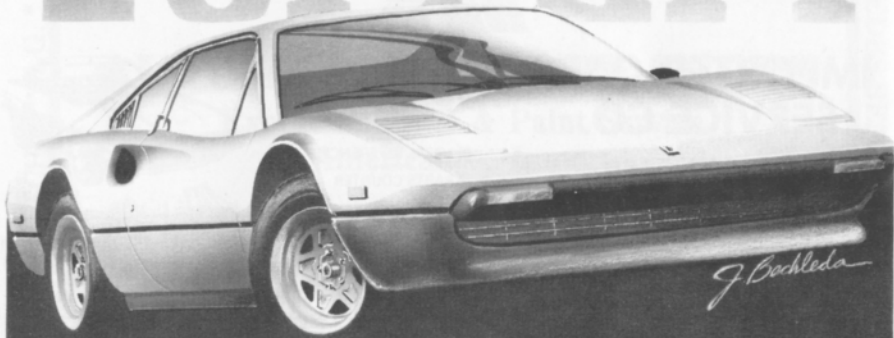


OPEN 6 DAYS A WEEK — CLOSED SUNDAY





# Ferrari



*The Sports Car Exchange*  
THE SPORTS CAR EXCHANGE

DEARBORN

MICHIGAN'S EXCLUSIVE AUTHORIZED AGENT FOR FERRARI, MASERATI AND ALFA ROMEO  
14510 MICHIGAN AVE. DEARBORN, MICHIGAN 313-581-6222

## Looking back with Bizer

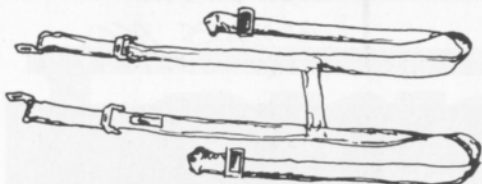
MISSED LAST MONTH'S  
JULY SHOW — BUT  
HERE'S A FEW SHOTS  
FROM ANOTHER JULY  
WEEK END...  
15 YEARS AGO.



# R.J.S. SAFETY EQUIPMENT

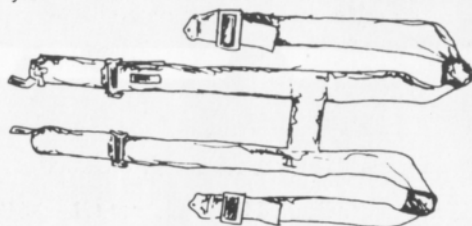
(Formerly Bob's Safety Equipment)

23506 John R. Rd. Hazel Park, Mi. 48030 (313) 548 - 5727



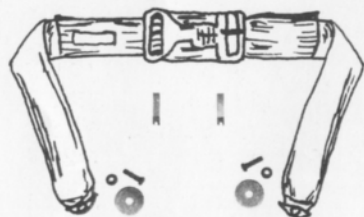
## 2" SHOULDER HARNESS

Meets new SCCA mandatory safety requirements for all competition cars. To install, you must have new "H Type" floor mount harness. 2" style.



## 3" SHOULDER HARNESS/SPRING

New "H Type", floor mount harness, 3" style.



## 50502 3" LAP BELTS

4130 chromoly aircraft material used in all hardware for maximum strength. Features no side adjusters to rub hips. Instead, they are connected and contained in the main buckle unit, one on each side. Adjustable 18" to 60", with special tension springs kits also available.



## HI-TOP SHOES,

White, Fully Nomex, Inside and Out.



## ORANGE NOMEX GLOVES

White or orange.

- NOMEX UNDERWEAR
- NOMEX SOCKS
- NOMEX BANDANA
- NOMEX RACE HOODS, 2-Layers, Eye Opening or Open Face.
- NOMEX DRIVING SUITS, Custom Made, 1-Layer or 2-Layers. Your choice of colors, Blue, White, Red, Yellow, Color Stripes, Name
- GOGGLES
- FIRE EXTINGUISHER
- HALON 1301 SYSTEMS
- ADJUSTABLE ANTI-SUB BELTS

We are manufacturers for all types of Racing Equipment For:  
**ARC • USCA • NASCAR • ARCA • IHRA • AHRA • NHRA**  
**UDRA • SCCA.** All approved.

## FUEL CELLS

## average lap speed chart

Min/Sec	MPH	Min/Sec	MPH	Min/Sec	MPH
1:00	85.326	1:17	66.488	1:34	54.463
1:01	83.927	1:18	65.635	1:35	53.890
1:02	82.574	1:19	64.805	1:36	53.329
1:03	81.263	1:20	63.995	1:37	52.779
1:04	79.993	1:21	63.204	1:38	52.240
1:05	78.762	1:22	62.434	1:39	51.713
1:06	77.569	1:23	61.681	1:40	51.196
1:07	76.411	1:24	60.947	1:41	50.689
1:08	75.288	1:25	60.230	1:42	50.192
1:09	74.197	1:26	59.530	1:43	49.704
1:10	73.137	1:27	58.846	1:44	49.227
1:11	72.106	1:28	58.176	1:45	48.758
1:12	71.105	1:29	57.523	1:46	48.298
1:13	70.131	1:30	56.884	1:47	47.846
1:14	69.183	1:31	56.259	1:48	47.403
1:15	68.261	1:32	55.647	1:49	46.968
1:16	67.363	1:33	55.041		

The Waterford Hills Road Course is 1.4221 miles long (7,509 ft. center line of track). To determine the speed of any individual car, time it for one complete lap and read off the speed from this table.

## class records

ASR	Bob Schneider	Mallock U2	1:11.1	5/79
CSR	Evan MacDonald	M - 2	1:10.5	9/78
DSR	Don Clining	Meister Honda	1:20.8	5/75
S/2000	Larry Campbell	Lola	1:11.5	9/79
CP	Wayne Rogers	Datsun 240Z	1:19.4	8/78
DP	Karl Nilsson	Porsche 914	1:17.5	9/79
EP	Lou Livengood	Porsche 356	1:16.3	6/80
FP	Barry Hartzel	MG Midget	1:16.2	7/78
GP	Grant Brady	Triumph Spitfire	1:18.9	9/78
HP	Paul Cameron	Sprite	1:20.4	7/78
GT-1	Dave Buist	Corvette	1:15.4	6/81
GT-2	J. Byron Walker	Datsun 510	1:16.5	9/80
GT-3	Dave Huard	Toyota	1:18.9	7/80
GT-4	Ross Becker	Mini	1:20.6	8/80
SS/A	Bobby Fehan	Mustang II	1:27.4	7/80
SS/B	Thad Gutowski	Scirocco	1:29.6	9/76
SS/C	Marc Robling	Pinto	1:30.1	9/80
FF	Vince Muzzin	Royale	1:09.4	6/78
FV	Lee McLeod	Lynx	1:15.7	7/81
**F/ALTC	Vince Muzzin	March	1:06.7	5/75
F/CNTL	Charles Van Acker	Lola	1:09.8	8/79
F4	Robert Long	Xpit	1:13.2	9/79
F440	Greg Assenmacher	Stinger	1:19.0	7/80

\*\*track record



# racing classes

To insure fairness in competition, all road racing cars are grouped into racing classes by the Sports Car Club of America in its General Competition Rulebook (GCR). Waterford Hills Road Racing observes the GCR regulations with some minor exceptions.

The five competition groups are: Production (sports cars), Showroom Stock (GT cars and sports cars with minimal modification), Sports Racing (highly modified engine and body over wheels), GT (enclosed cockpit passenger cars and former big production cars), and Formula (open wheels and single cockpit). Race groups are subdivided into classes of equally competitive cars based upon engine size and handling characteristics.

The cars listed below are representative of their racing classes and include most of those you will see at Waterford Hills

## PRODUCTION

- CP** Datsun "Z" series, Mazda RX7, Porsche 914/6 & 924 Turbo, Sunbeam Tiger, Triumph TR-6 & TR-8
- DP** Lotus Super 7, Datsun 2000, Triumph GT-6, Yenko Stinger, Porsche 914-S
- EP** Porsche 356 series, MGB, Opel GT, Porsche 914/4, Triumph TR-4
- FP** Saab Sonnet, MG Midget Mk III & IV, Lotus 7, Triumph Spitfire Mk III & IV & 1500
- GP** MG Midget Mk I & II, Triumph Spitfire Mk I & II, MGA, Porsche Coupe, Austin Healy Sprit 1100, Fiat X1/9, Fiat 124 Spider
- HP** Austin Healy Sprite Mk I & II, Fiat 850, MG Midget 948, Fiat Abarth

## SHOWROOM STOCK

- SSA** Porsche 924, Datsun 280Z, Capri V-6, Mustang Cobra, Mazda RX-4 & RX-7
- SSB** Datsun 200 SX, Fiat 124, Scirocco, Dodge Colt
- SSC** Pinto, VW Rabbit, Renault LeCar, Mustang 2.3, Fiesta, MGB Pontiac Astre, Honda Civic, Toyota Corolla

## SPORTS RACING

- ASR** over 1300 cc but less than 6000 cc
- CSR** over 850 cc up to 1600 cc (with restrictions)
- DSR** below or equal to 850 cc
- S/2000** uses Ford 2000 cc overhead cam engines only

## GT CLASSES

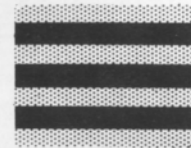
- GT-1** Camaro, Dodge Aspen, Ford Cobra II, Corvette, Shelby GT-350, Porsche 911 SC
- GT-2** Opel 1900, Datsun 510 1800, Mustang 2300, Pinto 2000 & 2300, Cosworth Vega,
- GT-3** Ford Escort/Lynx, VW Scirocco, VW Rabbit, Datsun 200 SX, Mazda RX 2, Toyota Celica, Pinto 1600, Fiat 124 Sports Coupe, Datsun 510 1600, Dodge Colt, Toyota Corolla 1600
- GT-4** Honda Civic, Austin/Morris Mini Cooper, VW 1300, NSU TT, Renault LeCar, Fiat 124 1200, Toyota Corolla 1200

## FORMULA

- FF** Formula Ford - Cortina or Pinto 1600 cc engine, strict weight to engine ratio with driver's weight included in total legal weight, very equal class
- FV** Formula Vee - all Volkswagen components, 1200 cc engine, driver's weight included in total legal weight, very competitive class
- F/AKTC** Formula Atlantic - choice of engines in over 1100 cc up to 1600 cc range, wings and other modifications allowed, not meant to be an inexpensive race car
- F/CNTL** Formula Continental - engine up to 1100 cc, rear wings allowed, combines the modifications of the previous Formula C and Formula Super Vee classes
- F440** Formula 440 - utilizes Fuji two-cycle snowmobile engines and drive train, rigid suspension, wings permitted
- F4** Formula Four - Canadian class, motorcycle engine power plant, engine size determines weight and transmission allowed

# flags

**yellow with red stripes**



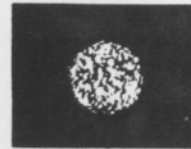
Take care, oil has been spilled or a slippery condition exists somewhere in your vicinity. Look at the track surface.

**black**



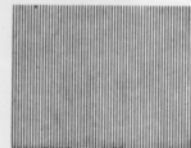
Sloppy or dangerous driving. Complete the lap you are on, then stop at the Start/Finish line for consultation with the Chief Steward.

**black with orange ball**



(Meatball black flag) There is something mechanically wrong with your car. Proceed to your pits at reduced speed.

**green**



(Or no flag) Course is clear.

**yellow**



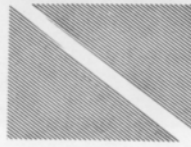
(Stationary) Take care, danger, no passing.  
(Waving) Great danger, be prepared to stop, no passing.

**red**



Stop immediately, clear the course as well as circumstances permit; the race has been stopped.

**blue with diagonal yellow stripes**



(Motionless) Another competitor is following you closely.

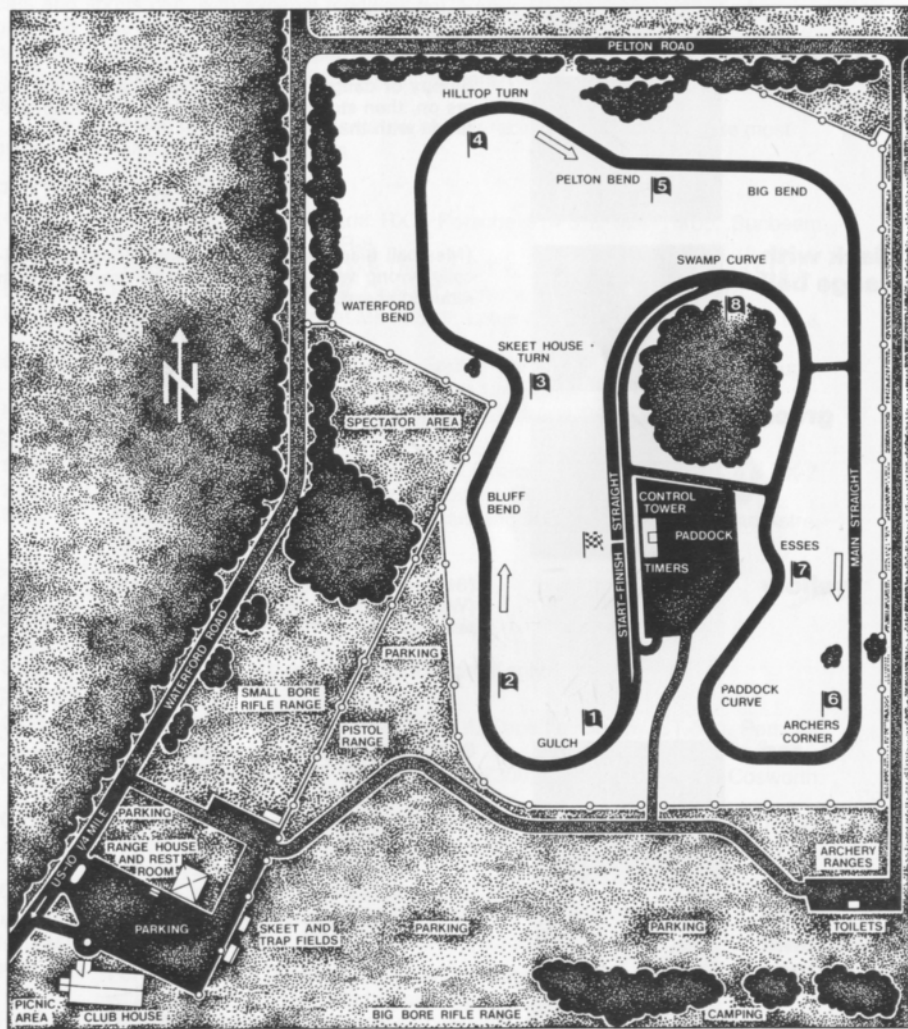
**checkered**

You have finished the race (or practice session). Complete one "cool-off" lap at reduced speed before entering the pits.



# waterford hills course map

a 1.5 mile  
asphalt road course  
at waterford,  
michigan



# THE SPIRIT OF COMPETITION



# A CONTINUING TRADITION

FORD DIVISION 