



**25** years

**WATERFORD HILLS**  
  
**ROAD RACING** oakland county sportsmans club



**WATERFORD DIGEST • 1983**



AUGUST \$1.00

**RACING RAIN OR SHINE**

The hills of Waterford are being invaded . . . with an army of sports cars, sedans and formula cars in fierce, wheel to wheel competition . . . and for 1983, we've assembled the largest field in our 25 year history! Watch over 130 top drivers battle it out in the finest racing machinery from America and Europe. Corvette, Porsche, Datsun, MG's, things from Capris to Camaros, McLarens to MG's. All together, fighting it out on a mile-and-a-half track with 13 right and left turns that twist up and down hills like no other road course in the U.S.A.

**WATERFORD HILLS 1983**

**ROAD RACING CALENDAR**

- MAY 14-15
- JUNE 25-26
- AUGUST 27-28
- MAY 28-29
- JULY 30-31
- SEPT. 24-25

**EASY ON THE WALLET**

Admission is just \$3.00 for Saturday, \$5.00 for Sunday, or \$6.00 for the entire weekend. Children under 12 are always free and a Season Ticket is only \$25.00 The track opens at 10 A.M. for practice and qualifying. Racing begins at 1:30 p.m. on Saturday (seven races) and at 12:00 a.m. on Sunday (ten races). For more information phone (313) 623-0444.

**EASY TO GET TO**

Chances are you live within a few minutes of the Midwest's premier road course. The W.H.R.R.I. Race Track is located just 6 miles north of Pontiac on Waterford Road, 1/4 mile east of Dixie Highway (U.S. 10) in Waterford, Michigan. The easiest route is to take I-75 to the southbound Sashabaw Exit. Take Sashabaw south to Pelton Road, then take Pelton west to Waterford Road. The total distance after exiting the expressway is 2-1/2 miles.

**THE WATERFORD DIGEST**

Published by Waterford Hills Road Racing Inc., 1983



TOYOTA TOYOTA TOYOTA TOYOTA TOYOTA TOYOTA TOYOTA TOYOTA TOYOTA

PACE CAR FURNISHED BY

# PAGE TOYOTA



8 1/2 & TELEGRAPH  
SOUTHFIELD, MICH.

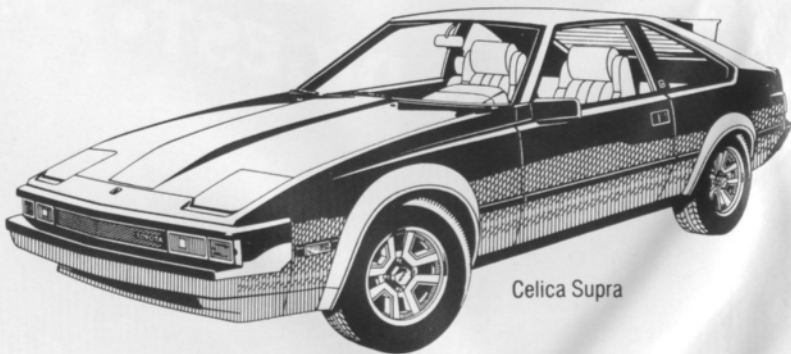
352-8580

MICHIGAN'S #1 TOYOTA DEALER  
IN SALES, SERVICE AND BODY REPAIR



WINNER OF THE NATIONAL SERVICE AND  
CUSTOMER RELATIONS AWARD FOR 6 YEARS

FINE SELECTION OF USED IMPORT  
& DOMESTIC ECONOMY CARS



Celica Supra

**THE PRIX-RACE FAVORITE —  
THE TOYOTA CELICA SUPRA.**

TOYOTA TOYOTA TOYOTA TOYOTA TOYOTA TOYOTA TOYOTA TOYOTA TOYOTA

# WATERFORD DIGEST • 1983

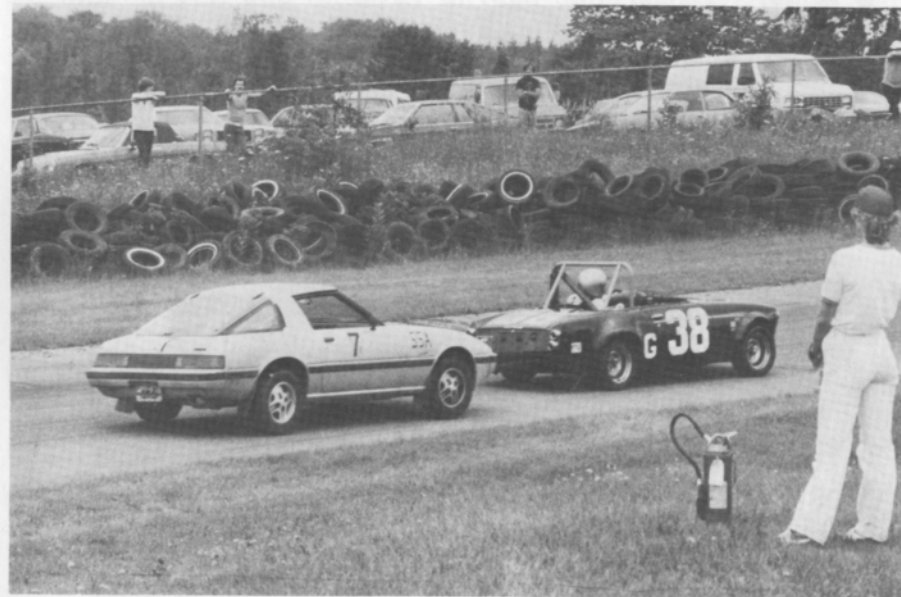


photo by don castle

## contents

- 2. the inside line
- 3. officials
- 23. looking back with bizer
- 25. average lap speed chart
- 25. class records
- 26. racing classes
- 27. flags
- 28. course map
- 30. racing schedule

cover top: May 1962 — bill brack, no. 85 mini cooper

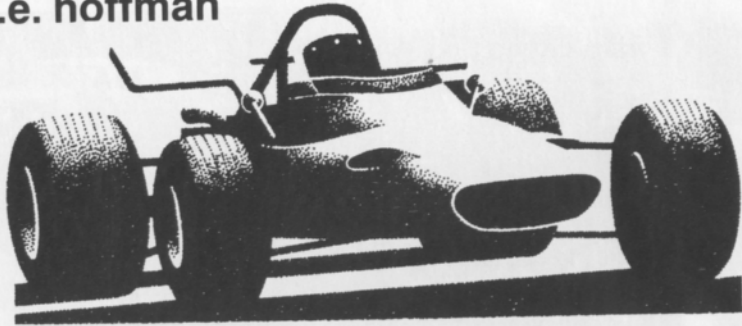
cover bottom: September 1981 — dan hill, no. 35 mini cooper

## staff

publisher	sue hoffman
advertising director	jerry morlewski
art director	dan hill
photographers	al bizer
	john j. willyard
	joe costa
	john gacioch
cover photo	al bizer

## the inside line

s.e. hoffman



Welcome to the August races!

Last month's races were a mixture of sadness and happiness.

Sadness was there as we presented the first annual Chic Williamson Memorial Trophy to Michael Hunt, Formula Vee winner. Chic drove a Vee here and his presence was felt throughout the weekend--a big, friendly driver, Chic is still missed. We received the following note from his daughter, Pat Cooper:

"On behalf of the Williamson family, I would like to express our gratitude to all at Waterford Hills Raceway for your continued support and concern for our family, but most of all, for the warm and sincere way you have honored the memory of my father. It is a great tribute to his memory and to the friendships that have endured, our heartfelt thanks."

Happiness was there for the two drivers who set new class records. Craig Allen returned to racing here in a new Lotus Elan and promptly set a new DP time of 1:16.4 taking more than a second off the previous time! Stuart Lamont took 8/10ths off the old F4 time with a new record of 1:12.5 in his speedy Xpit. It is always a pleasure to welcome Stuart and the Canadian Four's for a weekend!

This weekend we celebrate the twenty-fifth year of racing here at Waterford Hills. We will be honoring our past champions, past presidents, and founders in special ceremonies on Sunday.

**We are proud to present the B F Goodrich T/A Sweepstakes in its only Michigan appearance as part of our anniversary festivities! Visit the T/A Sweepstakes and see the BFG Porsche 924 Turbo that posted the only win in class on street radial tires since the introduction of**

pure racing slicks at Lemans, France in June, 1982. See John Buffam's 1982 Audi Quattro, the pro rally championship car. See an array of race films demonstrating BFG's numerous racing victories taking on all challengers in such events as Lemans, Pro Rally, Off Road Racing etc.

Register to win a 1983 Porsche 944 or to win a 1983 Audi Quattro in the BFG nationwide Sweepstakes. Prizes will be given away in early 1984. Visit this excellent exhibit and meet the friendly representatives for this progressive corporation. We are delighted to have them here!

Looking ahead to September, we will welcome the return of the Vintage race cars. In the spectator area, the English Car Clubs will have a corral on Sunday.

Right now, sit back and enjoy our races. Cheer and yell and help us celebrate twenty-five years of sports car racing!!

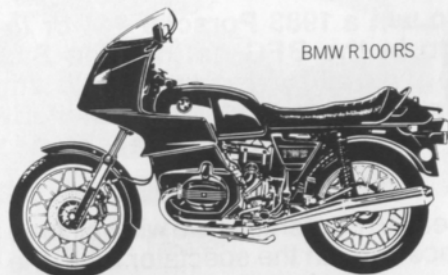
Happy viewing!!

## officials

oakland county sportsmen's club	
president	jerry tiberg
waterford hills road racing club	
president	jim mcintosh
chief steward	john morris
assistants	ed atkinson
	barb kitch
stewards of the meet	dan macdonald
	don clining
	tim evans
	bill hallandal
	peter quenet
	mike white
director of racing	bernie fling
race coordinator	dennis whitehead
chief of timing and scoring	anne roeske
chief of flags and communications	sue hoffman
chief of communications	chris maurer
chief starter	hal goff
assistants	mike morrow
	iain ferguson
chief tech inspector	tony kunert
chief paddock marshal	bruce penberthy
chief grid marshal	nancy waggoner
chief course marshal	dave sanders
chief race medical	blackie meyers
chief registrar	jan evans
licensing chairman	jerry shiloff
membership chairman	judy davis
trophy chairman	lynda gale
la boutique	pat prato
projects chairman	david shook

# Erhard Motor Sales Inc.

24130 Telegraph Rd. at 9½ Mile, Southfield, 352-6031



BMW R100RS

## THE MOTORCYCLE THAT INVENTED SPORT TOURING.

Since the agility of the BMW R100RS, along with its wind tunnel-tested fairing, first made sport touring a reality, other bikes have tried unsuccessfully to emulate it.

Which is why Touring Bike Magazine calls it "a rider's bike above all others."

THE LEGENDARY MOTORCYCLES OF GERMANY.



## MAKE SURE YOUR BMW ISN'T THE FIRST BMW YOUR MECHANIC HAS LAID HIS HANDS ON.

The average mechanic, no matter how well-intentioned, cannot offer you anything approaching the expertise of the BMW service technician.

Who was trained by BMW and who maintains his knowledge through yearly updates and ongoing courses.

Who can offer you genuine BMW parts, thereby maintaining your investment.

And who will have perfected his techniques on many BMW's before he so much as touches yours.

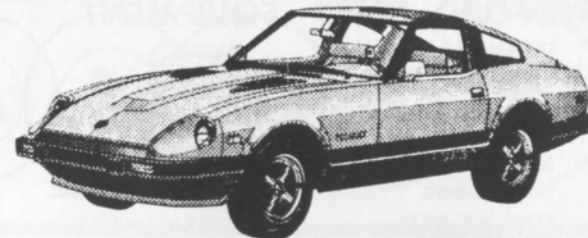
THE ULTIMATE DRIVING MACHINE.  
BMW, MUNICH, GERMANY.



BMW  
633CSi



© 1982 BMW of North America, Inc. The BMW trademark and logo are registered trademarks of Bayerische Motoren Werke, A.G.



280-ZX TURBO 2-SEATER

## Leo Adler DATSUN, Inc.

MICHIGAN'S FIRST DATSUN DEALER

GRAND RIVER AT EIGHT MILE ROAD  
FARMINGTON HILLS, MICH.

(313) 476-5710

# JRE Tires

## TIRE TRUEING

Goodyear  
Eagle NCT-GT  
We Beat Any Deal

B.F. Goodrich  
Radial T/A's  
Michelin TRX

8-8 Daily  
8-5 Sat.

13 Mile & John R  
Madison Heights  
585-6353

6477 Highland Rd.  
Pontiac, Mich.

14 Mile-3 Blks. E. of Coolidge  
Royal Oak  
280-0202

## REDFORD SPEED EQUIPMENT

Of Special Interest

SIDEMOUNT HEADERS  
ROLL BARS  
KONI SHOCKS  
SWAY BARS  
DRIVING LIGHTS  
COMP. SEAT BELTS  
AND HARNESES



RACING TIRES AND WHEELS

STEWART-WARNER INSTRUMENTS & FUEL PUMPS

Other Necessities

GENERAL KINETICS  
RACING CAMS  
LAKEWOOD  
HOLLEY CARBS  
TRANS AM OIL PANS  
RACING OIL  
HOOKER HEADERS  
HURST  
MALLORY & ACCEL  
IGNITION SYSTEMS

GENUINE  
**G.M.**  
U.S. PARTS

532-2050 or 532-6223

26577 GRAND RIVER 10-8 Mon-Fri 10-6 Sat



# CIBIE MARCHAL PARIS-RHONE

FOR  
PORSCHE  
SAAB  
RENAULT  
PEUGEOT  
(313) 294-1700

Manufacturers of Quality Automotive  
Performance Lighting Products  
And Electrical Components

St. Clair Shores, Mi. 48082

New, Used reproduction Parts and Accessories  
Custom Paint and Body Repair

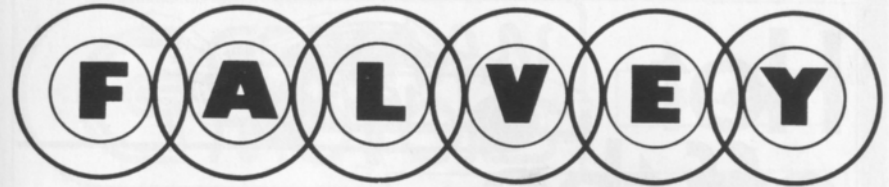
## BOJAX

### HI-TEK AUTOMOTIVE

design and fabrication

DOUG FEHAN  
BOB FEHAN  
BOBBY FEHAN  
313/549-5410

4712 Fernlee  
1st Block East of Coolidge, S. of 14  
Royal Oak, Michigan 48073



TOYOTA  
SAAB

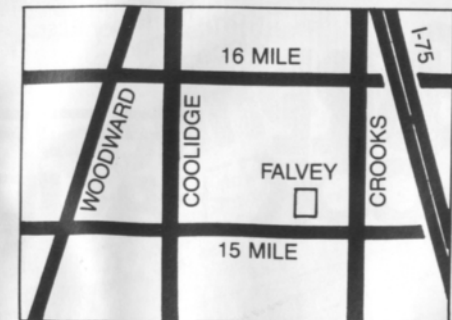
VOLKSWAGEN  
JAGUAR

SALES & LEASING  
IN THE  
TROY MOTOR MALL

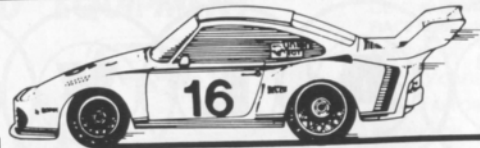
643-6900  
TWO FULL SERVICE  
DEALERSHIPS

EXPERT BODY  
REPAIRS AND  
CUSTOM PAINT  
ON ALL IMPORTS

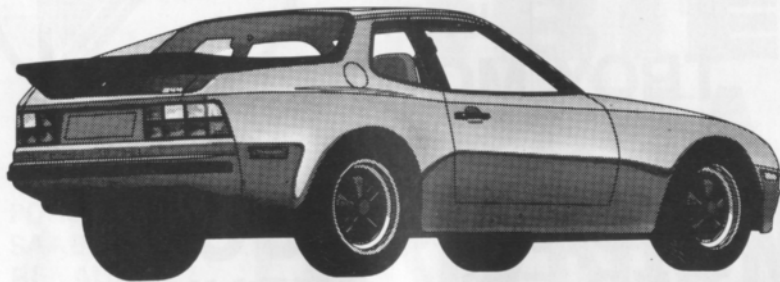
FEATURING  
HIGH LINE  
USED  
IMPORTS



# Hot off the track.



911SC



944 Porsche

The Porsche family of sports cars: racing runs in their blood. Built for performance with track-proven features like rack and pinion steering and electronic ignition. Built for pleasure, too, with comfortable, luxurious interiors, high-back bucket seats, and sleek styling. For race-tested performance, road-test a Porsche today.

# Bill Cook + Porsche Audi

37901 Grand River by 10 Mile  
Farmington Hills

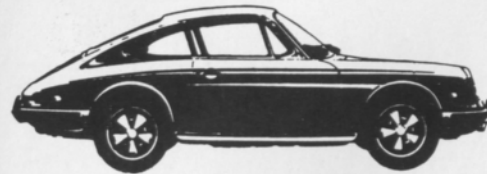
471-0044

# GERMAN MOTORS

689-4940

PIRELLI, MICHELIN & KLEBER TIRES

COMPLETE REPAIR SERVICE



- MERCEDES BENZ
- PORSCHE
- VOLKSWAGEN
- AUDI
- B-M-W

1725 E MAPLE RD (15 MILE) TROY  
1 BLOCK EAST OF I-75

Get the insider's newsletter:  
**Performance News**

Join the Direct Connection Race Team for only \$12 and get 10 issues.

Performance News is a Chrysler publication that gives you more than the story behind the story in IMSA racing, drag racing, pro rally, autocross and circle track racing. It gives you tech tips, new product news, even a column by Carroll Shelby.

**But wait, that's not all!** Plus, with your membership in the Direct Connection Race Team, you also get: our 184-page performance parts catalog, a pair of fender decals, a Race Team jacket patch, the Team T-shirt and a membership card that could qualify you for special offers.



# direct connection

Write a \$12 check payable to Chrysler Corporation, with your state's sales tax--or charge Visa or MasterCard (card no. \_\_\_\_\_, expiration date \_\_\_\_\_) and send to: Direct Connection Catalog Center, Dept. WH-6, 20026 Progress Dr., Strongsville, Ohio 44136. Circle T-shirt size: S, M, L, XL

NAME \_\_\_\_\_ ADDRESS \_\_\_\_\_ CITY, STATE \_\_\_\_\_ ZIP \_\_\_\_\_

# winners circle



andy falbo formula A



peggy krom SSB



john frazer FF



photo by al bizer

## JULY 30/31 RACE WINNERS CLASS RACES

	saturday	sunday
race 1	GT-4 GT-5 SSA SSB	jerry morlewski ted wollesen bill sulze peggy krom
race 2	FV	michael hunt
race 3	S2000 CSR EP FP GP HP	bob schneider don parish paul nawrocki steve ives kevin good marsha vaughn
race 4	FA FF FFR F4	andy falbo doug plzak mark davison stuart lamont
race 5	GT-1 GT-3 DP	tim clark doug goad craig allen

## FEATURE RACES

	race 1	race 2	race 3	race 4
1st	michael hunt	jerry morlewski	andy falbo	bob schneider
2nd	james bowman	ross becker	scott duthie	ray krom
3rd	david peacy	ted wollesen	doug plzak	don sak
4th	stuart delaney	kevin good	robert long	doug buist
5th	john conely	al syilagyi	john frazer	tim taylor

photo by al bizer



photo by al bizer



photo by john willyard

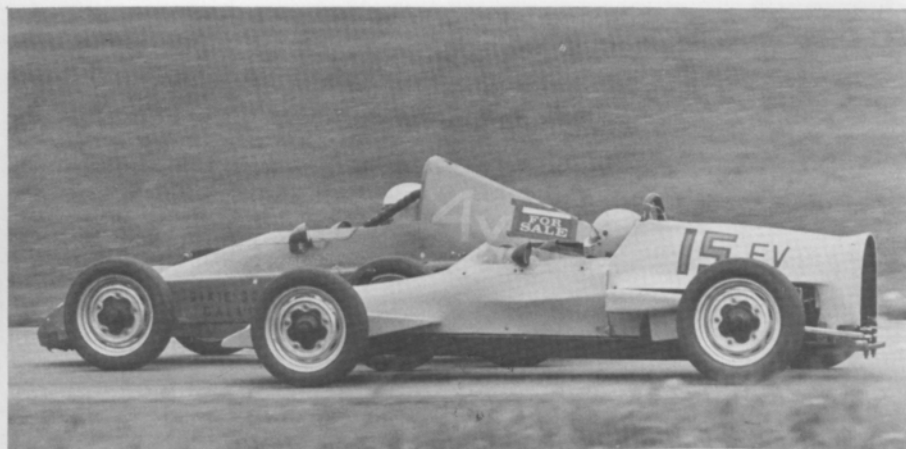


photo by john willyard



photo by john willyard

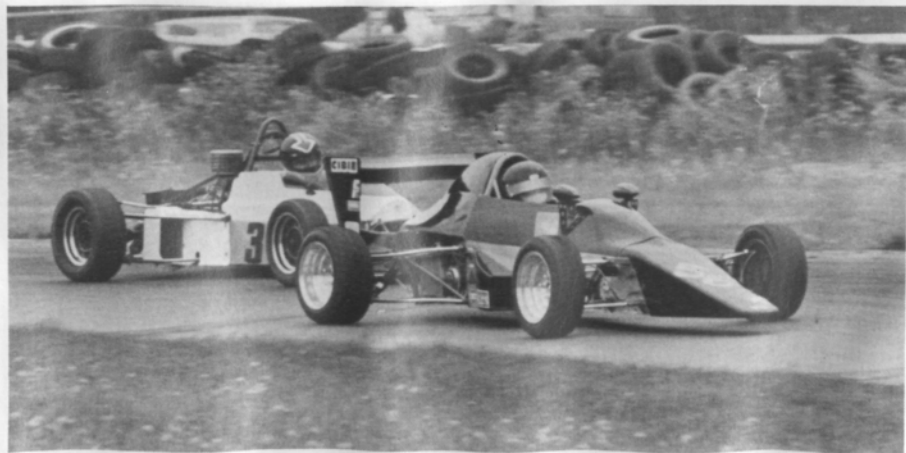


photo by al bizer



photo by al bizer

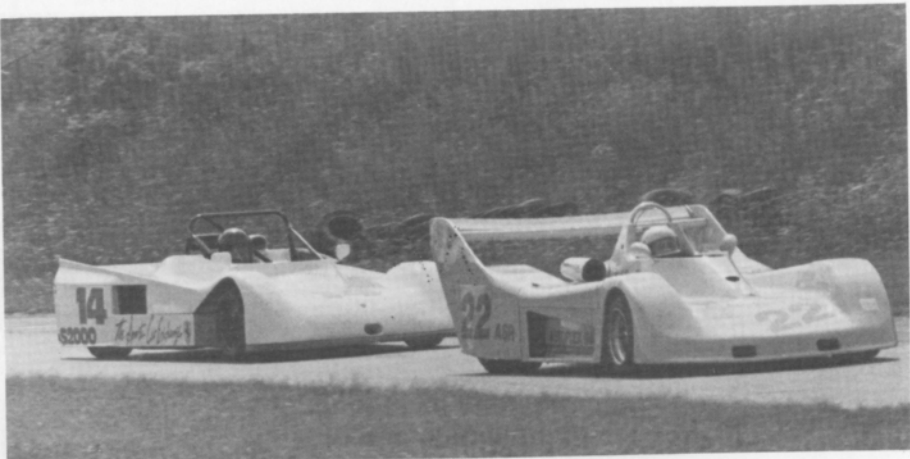


photo by al bizer



photo by don castle



photo by john williard



photo by john williard

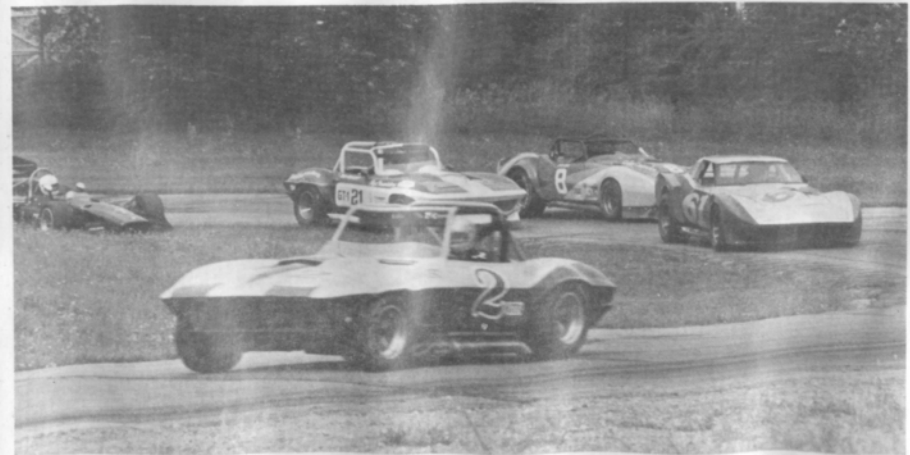
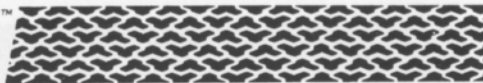


photo by john williard

**T/A** HIGH TECH  
RADIALS



**BFGoodrich**

*The Radial Born  
of High Technology.  
Designed For The Driver  
That Demands The Most From His Tires.*



**T/A 70**



**T/A 60**



**T/A 50**

*The Street Radial  
Designed To Win At The Track.*



**All-Terrain T/A**



**Sport Truck T/A**

*The first radial light truck tire  
specifically engineered for on or off-road use.*



**Mud-Terrain T/A**

**BFGOODRICH**  
2330 S. Dort Hwy.  
Flint, Mi 48507  
232-0168

**BFGOODRICH**  
28501 Dequindre  
Madison Hgts., MI 48071  
543-4260

**BFGOODRICH**  
15150 Michigan Ave.  
Dearborn, MI 48126  
581-6900

We accept M/C, Visa, Diners, American Express Carte Blanche

OPEN  
SATURDAYS

**S-G**

**IMPORTED CAR PARTS, INC.**

**PARTS & ACCESSORIES FOR ALL  
IMPORTED CARS**



"IMPORTED CARS ARE  
NOT FOREIGN TO US"



- \* BOSCH ELECTRICAL
- \* HAYNES REPAIR MANUALS
- \* WEBER CARBURETION

- \* KYB SHOCKS
- \* CIBIE LIGHTS
- \* ANSA EXHAUST

**4 LOCATIONS TO SERVE YOU**

**BLOOMFIELD HILLS**  
334-6700

1717 S. TELEGRAPH BLOOMFIELD HILLS

**WARREN**  
759-0800

13456 E. 11 MILE WARREN

**FARMINGTON**  
477-0410

32214 W. 8 MILE FARMINGTON HILLS  
(BETWEEN MERRIMAN & FARMINGTON)

**ANN ARBOR**  
769-4900

1948 W. STADIUM ANN ARBOR

SERVING THE DETROIT AREA FOR  
OVER 10 YEARS

AUTHORIZED  
DISTRIBUTOR



**RE/MAX**

**CENTRAL**



2610 north woodward avenue  
royal oak, michigan 48073  
phone: (313) 549-4404



*Above  
the  
Crowd!*

RE/MAX STANDS FOR REAL ESTATE MAXIMUMS. THIS  
MEANS MAXIMUM SERVICE AND MAXIMUM ASSISTANCE.  
FOR INFORMATION ON VACATION TIME SHARING OR  
FOR A COMPLIMENTARY MARKET ANALYSIS OF YOUR  
PRESENT HOME, CALL:

Pete Wickenden  
Res. 542-4365

Phil Blagdurn  
Res. 548-2941

Office 540-9700

# Crankshaft Craftsmen Inc.



CRANKSHAFT GRINDING  
CAMSHAFT GRINDING  
CRANKSHAFT WELDING  
POLISHING-STRAIGHTENING  
HIGH PERFORMANCE WORK  
BEARINGS AVAILABLE

QUALITY BEFORE QUANTITY

RUSS TAYLOR - PRESIDENT

**(366-0140)**

2819 JEROME EAST OF I-75 • DETROIT



# Accessory House inc.

313-548-4488

23257 Woodward

Ferndale mi. 48220

Quartz Lighting

ANSA  
HELLA

Suspension

KONI  
KYB

Exhaust Systems

CIBIE

Seating

RECARO

Sports Car Apparel

Stewart Warner Instruments

Racing Equipment

BELL  
YANKEE

Rollbars

Air Dams

Vast Selection

Import Auto Adornments

World's Finest Manufacturers

For The Discriminating Driver

(313) 862-8500



## Security Associates, Inc.

COMMERCIAL, INDUSTRIAL, RESIDENTIAL SECURITY

JOHN G. NOLAN  
State License #BA0088

16245 MEYERS  
DETROIT, MICHIGAN 48235

## Cornell Engineering Company

Race Engine Balancing Specialists For Over 20 Years

1846 Thunderbird Troy, MI

362-2270



photo by john gaciocch

(313) 542-6150

## FOREIGN AUTOMOTIVE SUPPLY, LTD.

PARTS FOR ALL IMPORTS

HOURS: MON.-FRI. 8:30-7:00  
SAT. 9-5

380 W. 11 MILE RD.  
(5 BLKS. EAST OF THE I-75)  
MADISON HEIGHTS, MI 48071



## AUTOMETRIC BODY SHOPS

Expert Collision & Paint Service  
American .. Import



Visit Our Royal Oak Showroom & Gallery  
Investment Quality Special Interest Automobiles  
Automotive Art

818 N. Main  
Royal Oak, MI  
398-0200

8645 E. 10 Mile  
Centerline, MI  
757-7491

24465 Gratiot  
East Detroit, MI  
774-3455

## TONY'S

### TRANSMISSION *and* GEAR

- AUTOMATIC
  - STANDARD
  - CLUTCHES
  - REAR ENDS
- ROAD TESTING  
ESTIMATES

2785 12 MILE RD.  
BERKLEY

MASTER CHARGE & BANKAMERICARD

543-7118

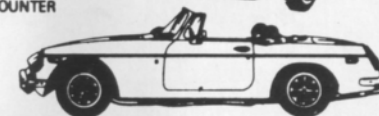
OR  
399-0177

## IMPORTED CAR SERVICE CO.

Call 293-5566

31529 UTICA RD., FRASER  
BET. 13 & 14 MILE

- LET OUR TRAINED PERSONNEL SERVICE YOUR CAR
- LOCAL REFERENCES
- PARTS COUNTER



# THINK WINK

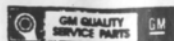
## CARS & TRUCKS



Satisfying Car Buyers For Over 42 Years

## BILL WINK CHEVROLET

10700 FORD RD., BET. WYOMING & SCHAEFER  
DEARBORN, MICHIGAN



### 582-5400

"KEEP THAT GREAT GM FEELING WITH GENUINE GM PARTS"

## RAGLAND

## AUTO SUPPLY

SPECIALISTS IN ALL PHASES OF

### HIGH PERFORMANCE WORK

COMPLETE LINE OF BRAND NAME &  
CUSTOM PARTS & ACCESSORIES

### COMPLETE MACHINE SHOP

- ENGINE BLUEPRINTING • BALANCING (ALL WORK DONE IN OUR OWN SHOP)

SOUTHFIELD

355-2288

26700 W. 8 MILE RD.

BET. INKSTER & TELEGRAPH

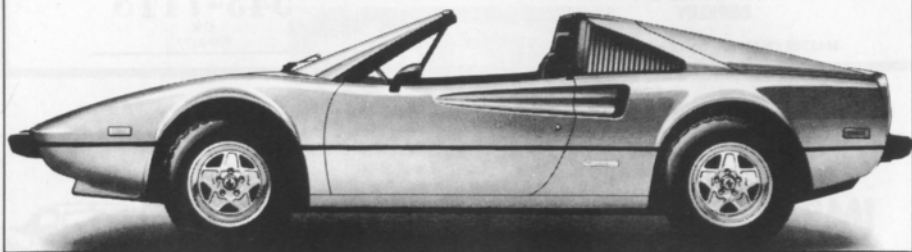


OPEN 6 DAYS A WEEK — CLOSED SUNDAY



*Ferrari.*

*A technical masterpiece.  
A unique investment opportunity.*



Only a personal demonstration can convey the feelings of pride and accomplishment that come with owning a work of art.

And, as an authorized dealer, I believe that a Ferrari is an investment worth protecting. I offer skilled service by factory trained technicians and the exclusive Ferrari factory warranty program.

Robert W. Schneider



*The Sports Car Exchange*

MICHIGAN'S EXCLUSIVE AUTHORIZED AGENT FOR FERRARI, MASERATI AND ALFA ROMEO  
14510 MICHIGAN AVE. DEARBORN, MICHIGAN 313-581-6222

**LOOKing back**  
**with Bizer** \_\_\_\_\_

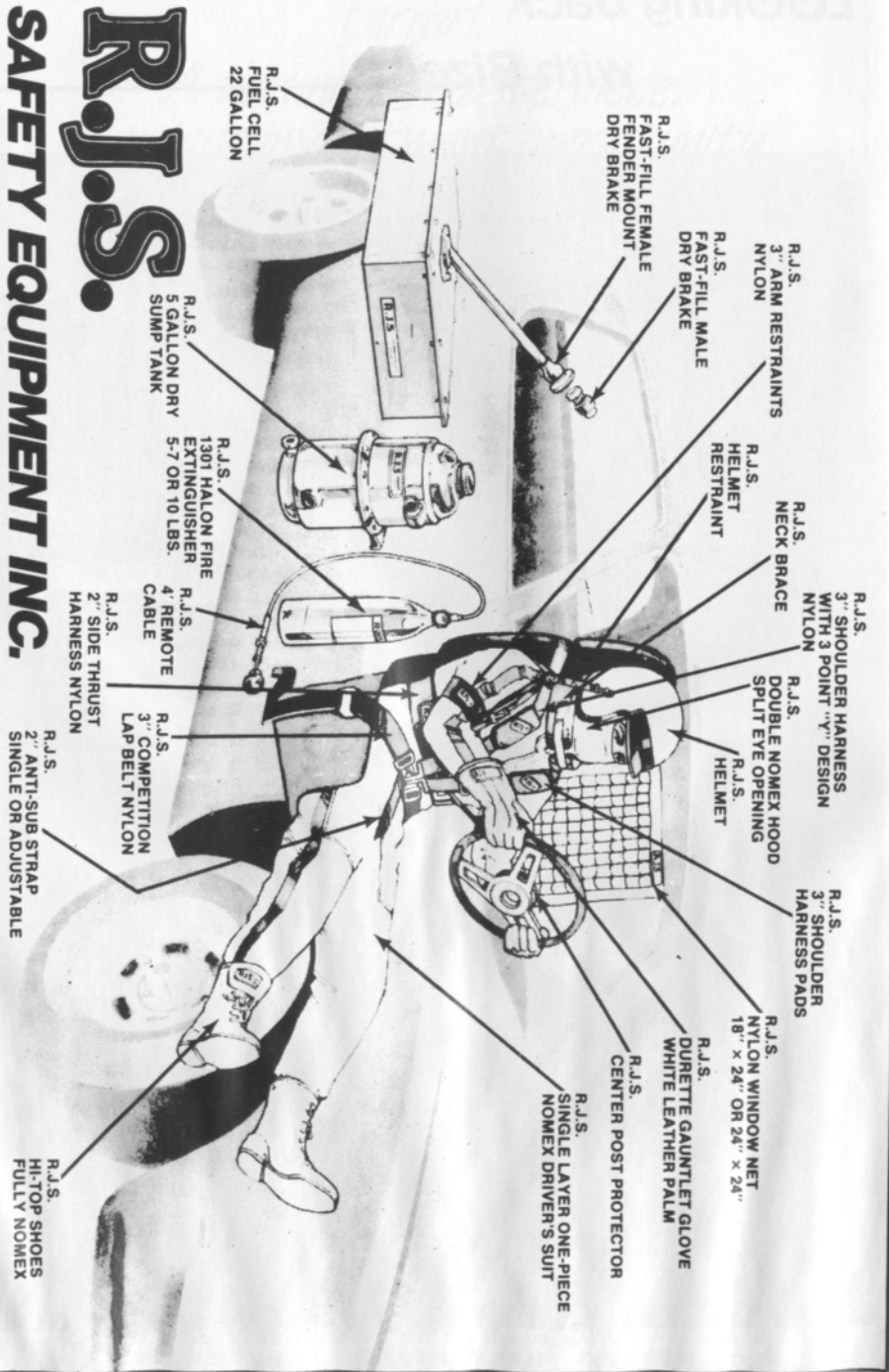


*AUGUST 14, 1960*

*WHAT A GRAND ARRAY OF SPORTS RACERS!*

# R.J.S.

**SAFETY EQUIPMENT INC.**  
HAZEL PARK, MICHIGAN 48030 (313) 548-5727



## average lap speed chart

Min/Sec	MPH	Min/Sec	MPH	Min/Sec	MPH
1:00	85.326	1:17	66.488	1:34	54.463
1:01	83.927	1:18	65.635	1:35	53.890
1:02	82.574	1:19	64.805	1:36	53.329
1:03	81.263	1:20	63.995	1:37	52.779
1:04	79.993	1:21	63.204	1:38	52.240
1:05	78.762	1:22	62.434	1:39	51.713
1:06	77.569	1:23	61.681	1:40	51.196
1:07	76.411	1:24	60.947	1:41	50.689
1:08	75.288	1:25	60.230	1:42	50.192
1:09	74.197	1:26	59.530	1:43	49.704
1:10	73.137	1:27	58.846	1:44	49.227
1:11	72.106	1:28	58.176	1:45	48.758
1:12	71.105	1:29	57.523	1:46	48.298
1:13	70.131	1:30	56.884	1:47	47.846
1:14	69.183	1:31	56.259	1:48	47.403
1:15	68.261	1:32	55.647	1:49	46.968
1:16	67.363	1:33	55.041		

The Waterford Hills Road Course is 1.4221 miles long (7,509 ft. center line of track). To determine the speed of any individual car, time it for one complete lap and read off the speed from this table.

## class records

ASR	Ed Murray	Chevron	1:10.9	9/81
CSR	Evan MacDonald	M — 2	1:10.5	9/78
DSR	Ed Murray	Defender	1:18.9	9/82
S/2000	Larry Campbell	Lola	1:11.5	9/79
DP	Craig Allen	Lotus Elan	1:16.4	7/83
EP	Lou Livengood	Porsche 356	1:16.3	6/80
FP	Barry Hartzel	MG Midget	1:16.2	7/78
GP	Kirk Carlson	MG Midget	1:17.0	8/81
HP	Paul Cameron	Sprite	1:20.4	7/78
GT-1	Tim Taylor	Corvette	1:14.9	8/82
GT-2	J. Byron Walker	Datsun 510	1:16.5	9/80
GT-3	Doug Goad	Opal	1:18.0	5/83
GT-4	Jerry Morlewski	Fiat	1:19.4	5/83
GT-5	Ross Becker	Mini	1:21.3	5/83
SSA	Bobby Fehan	Mustang II	1:27.4	7/80
SSB	Charlie Henry	Dodge Charger	1:28.4	9/82
SSC	Mark Robling	Pinto	1:30.1	9/80
FF	Vince Muzzin	Royale	1:09.4	6/78
FV	Lee McLeod	Lynx	1:15.7	7/81
** F/ALTC	Vince Muzzin	March	1:06.7	5/75
F/C	Charles Van Acker	Lola	1:09.8	8/79
F440	Greg Assenmacher	Stinger	1:19.0	7/80
F4	Stuart Lamont	Xpiti	1:12.5	7/83

\*\*track record

# racing classes

To insure fairness in competition, all road racing cars are grouped into racing classes by the Sports Car Club of America in its General Competition Rulebook (GCR). Waterford Hills Road Racing observes the GCR regulations with some minor exceptions.

The five competition groups are: Production (sports cars), Showroom Stock (GT cars and sports cars with minimal modification), Sports Racing (highly modified engine and body over wheels), GT (enclosed cockpit passenger cars and former big production cars), and Formula (open wheels single cockpit). Race groups are subdivided into classes of equally competitive cars based upon engine size and handling characteristics.

The cars listed below are representative of their racing classes and include most of those you will see at Waterford Hills.

## PRODUCTION

- DP** Lotus Super 7, Datsun 2000, Triumph GT-6, Yenka Stinger, Porsche 914-S
- EP** Porsche 356 series, MGB, Opel GT, Porsche 914/4, Triumph TR-4
- FP** Saab Sonnet, MG Midget Mk III & IV, Lotus 7, Triumph Spitfire Mk III & IV & 1500
- GP** MG Midget Mk I & II, Triumph Spitfire Mk I & II, MGA, Austin Healy Sprite, Fiat X1/9, Fiat 124 Spider, Alfa Romeo, Porsche Coupe
- HP** Austin Healy Sprite Mk I & II, Fiat 850, MG Midget 948, Fiat Abarth

## SHOWROOM STOCK

- SS-GT** new class with current model cars of SSA plus additional modifications allowed.
- SSA** Mustang Cobra, Mazda RX series, Porsche 924, Capri V-6, Datsun 280Z
- SSB** Triumph TR-8, Scirocco, Dodge Colt, Datsun 200SX, Fiat 124
- SSC** Fiat X1/9, Pinto, VW Rabbit, Renault LeCar, Mustang 2.3, MGB, Honda Civic, Toyota Carolla, Pontiac Astre

## SPORTS RACING

- ASR** over 1300 cc but less than 6000 cc
- CSR** over 850 cc up to 1600 cc (with restrictions)
- DSR** below or equal to 850 cc
- S/2000** uses Ford 2000 cc overhead cam engines only

## GT CLASSES

- GT-1** Corvette, Camaro, Ford Cobra II, Shelby GT-350, Porsche 911 SC, Dodge Aspen
- GT-2** Datsun Z series, Mazda RX7, Porsche 914/6 & 924 Turbo, Sunbeam Tiger, Triumph TR-6 & TR-8
- GT-3** Opel 1900, Datsun 510 1800, Mustang 2300, Pinto 2000 & 2300, Cosworth Vega
- GT-4** Fiat 124 Sports Coupe, Pinto 1600, Toyota Celica, Dodge Colt, Toyota Carolla 1600, Renault LeCar, Datsun 510 1600, Ford Escort/Lynx, VW Rabbit & Scirocco
- GT-5** Datsun 200SX, Austin/Morris Mini Cooper, VW 1300, NSU TT, Honda Civic, Fiat 124 1200, Toyota Carolla 1200

## FORMULA

- FF** Formula Ford — Cortina or Pinto 1600 cc engine, strict weight to engine ratio with driver's weight included in total legal weight, very equal class
- FFR** Formula Ford Radial — the cars are the same as the above class except they must use BF goodrich T/A radial tires.
- FV** Formula Vee — all Volkswagen components, 1200 cc engine, driver's weight included in total legal weight, very competitive class
- F/ATLC** Formula Atlantic — choice of engines in over 1100 cc up to 16000 cc range, wings and other modifications allowed, not meant to be an inexpensive race car
- F/CNTL** Formula Continental — engine up to 1100 cc, rear wings allowed, combines the modifications of the previous Formula C and Formula Super Vee classes
- F440** Formula 440 — utilizes Fuji two-cycle snowmobile engines and drive train, rigid suspension, wings permitted
- F4** Formula Four — Canadian class, motorcycle engine power plant, engine size determines weight and transmission allowed

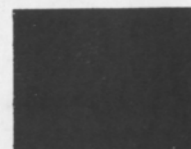
# flags

**yellow with red stripes**



Take care, oil has been spilled or a slippery condition exists somewhere in your vicinity. Look at the track surface.

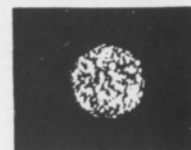
**black**



Sloppy or dangerous driving. Complete the lap you are on, then stop at the Start/Finish line for consultation with the Chief Steward.

Waving black flag (displayed on all corner stations) means the race is stopped. Slow down immediately and proceed around the track with extreme caution to the pit lane for a re-start.

**black with orange ball**



(Meatball black flag) There is something mechanically wrong with your car. Proceed to your pits at reduced speed.

**green**



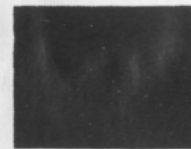
(Or no flag) Course is clear.

**yellow**



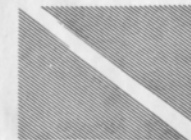
(Stationary) Take care, danger, no passing.  
(Waving) Great danger, be prepared to stop, no passing.

**red**



Waving red (displayed by the Starter only) means the race is stopped, slow down immediately and proceed around the track with extreme caution to the pit lane.

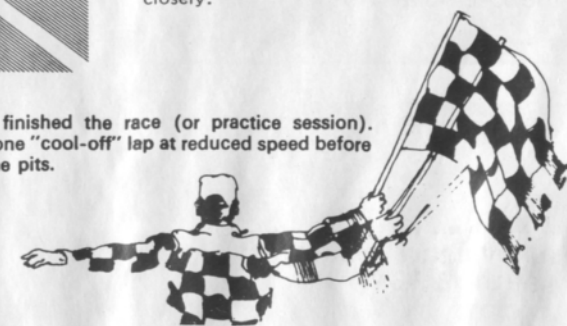
**blue with diagonal yellow stripes**



(Motionless) Another competitor is following you closely.

**checkered**

You have finished the race (or practice session). Complete one "cool-off" lap at reduced speed before entering the pits.



## waterford hills course map

a 1.5 mile  
asphalt road course  
at waterford,  
michigan



# THE BOSS 1983

FORD MUSTANG

FORD DIVISION 