

FALVEY MOTORS



THE BEST JAGUARS EVER BUILT:
There is no formula for the creation of a classic. Yet, for more than 50 years Jaguar has given the world classic after classic.

Here are two of the finest Jaguars ever built: the magnificent Series III sedan and the awesome V-12 powered S-type GT.

Both share the inimitable Jaguar qualities of graceful design, quick response and agile handling. Both are equipped with precise power rack

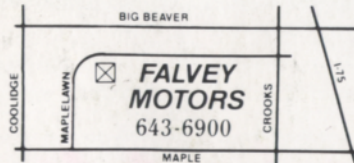
and pinion steering, racebred four-wheel independent suspension and decisive four wheel power disc brakes.

Inside, Jaguars provide a level of luxury and quiet seldom, if ever, equalled in

a high performance motorcar. Test drive them today.

ENJOY TOMORROW. BUCKLE UP TODAY.

JAGUAR
A BLENDING OF ART AND MACHINE



15 Mile (Maple) between Coolidge and Crooks

40 years...Creating the Competition!!

FALVEY

WATERFORD HILLS



ROAD RACING

oakland county
sportsmens club



1985

Waterford Digest

AUGUST \$2.00

TOYOTA TOYOTA TOYOTA TOYOTA TOYOTA TOYOTA TOYOTA TOYOTA

PACE CAR FURNISHED BY

PAGE TOYOTA



8½ & TELEGRAPH
SOUTHFIELD, MICH.

352-8580

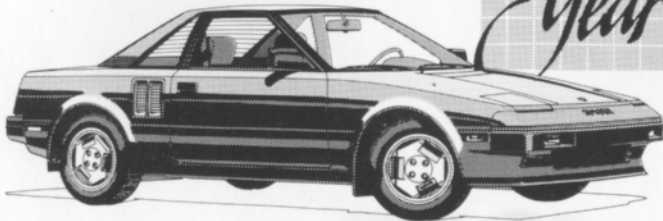
MICHIGAN'S #1 TOYOTA DEALER
IN SALES, SERVICE AND BODY REPAIR



WINNER OF THE NATIONAL SERVICE AND
CUSTOMER RELATIONS AWARD FOR 7 YEARS

FINE SELECTION OF USED IMPORT
& DOMESTIC ECONOMY CARS

MOTOR TREND MAGAZINE



TOYOTA MR2

**THE PRIX-RACE FAVORITE —
THE TOYOTA CELICA SUPRA.**

TOYOTA TOYOTA TOYOTA TOYOTA TOYOTA TOYOTA TOYOTA TOYOTA

1985 Waterford Digest



DON CASTLE

Contents



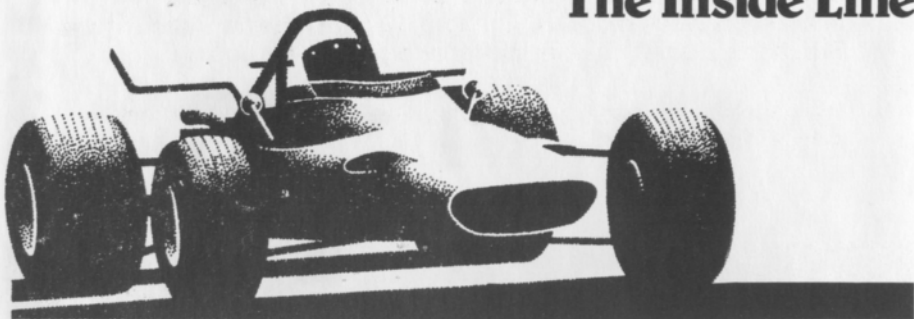
- 2. The Inside Line
- 3. Officials
- 14. Feature Story
- 25. Looking Back With Bizer
- 28. Average Lap Speed Chart
- 28. Class Records
- 29. Racing Classes
- 30. Flags
- 32. Course Map
- 33. Racing Schedule

Staff

Editor: DAN HILL
 Advertising Director: JERRY MORLEWSKI
 Design and Production: TAURUS ADVERTISING
 Photographers: AL BIZER
 DON CASTLE
 KARL RACENIS

Cover Photo by AL BIZER

The Inside Line



Welcome to the fifth race weekend of our six event schedule. The racing should be very intense as class and Top Ten points become more important.

Through July the current Top Ten points Leaders are;

1.	Jerry Morlewski	GT4	88 points
2.	Pat Nowak	GP	87 points
3.	Tom Kozak	SRen	81 points
4.	Ray Krom	SSC	80 points
5.	Lew Cooper Jr.	FF	78 points
6.	Doug Goad	GT3	75 points
7.	Jim Lockwood	FFR	71 points
8.	Jac Brown	FFR	67 points
tie	Sam Hamilton	HP	67 points
10.	Jim Cozzi	CSR	65 points

Good Luck to everyone.

A special welcome this month to the folks from Powers Distributing and Miller Beer. Miller is now the official beer of Waterford Hills.

The Meadowbrook Historic Races last month were a big success. Held in conjunction with the Meadowbrook Concourse, we had our biggest crowd in years. Next years event should be even better than this years.

This Sunday, members of the International Stars Region of the Mercedes-Benz Club of North America and the Southeastern Region of the Porsche Club of America will be on hand. They will be taking some parade laps during the day. Be sure to take a look at German engineering at its finest.

September 28th and 29th is once again MAC Tool/Ford Motorsport weekend. Continuing a 12 year tradition, the local British car club will be out in force to parade for you.

We hope you all have a good time. See you next month for the season finale.

Mike White



AL BIZER

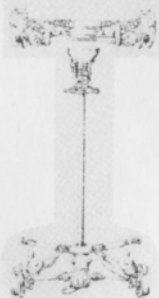
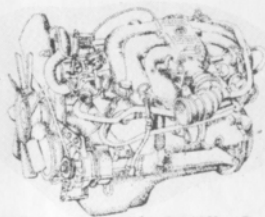
Officials

Waterford Hills Road Racing Club	
President	Don Burry
Chief Steward	John Morris
Assistants	Ed Atkinson Barb Kitch
Stewards of the Meet	Dan MacDonald Peter Quenet Mike White
Director of Racing	Jerry Morlewski
Race Coordinator	Dave Hinman
Chief of Timing and Scoring	Peggy Krom
Chief of Flags and Communications	Dan DiRienzo Jr.
Assistant Chief of Flags and Communications	Willy Perez
Chief Starter	Hal Goff
Chief Tech Inspector	Elmer Dickinson
Chief Paddock Marshal	Diana Yardley
Chief Grid Marshal	Lisa Kitch
Chief Course Marshal	Dave Sanders
Chief Race Medical	Blackie Meyers
Chief Registrar	Carol Humphreys
Licensing Chairman	Jerry Shiloff
Membership Chairman	Lee White
Trophy Chairman	Cynthia Kempton

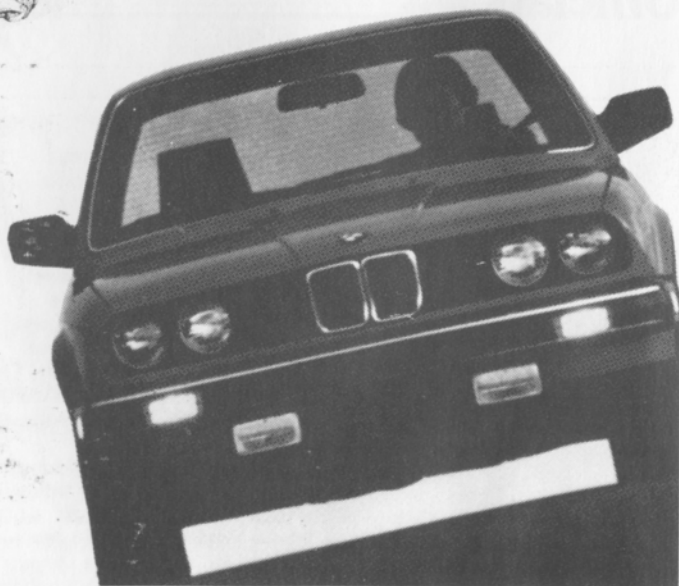
1985 Waterford Digest

**INTRODUCING THE ONLY
SPORTS SEDAN MORALLY
ENTITLED TO BORROW THESE
INNOVATIONS FROM BMW.**

325e



THE ULTIMATE DRIVING MACHINE.
BMW, MUNICH, GERMANY

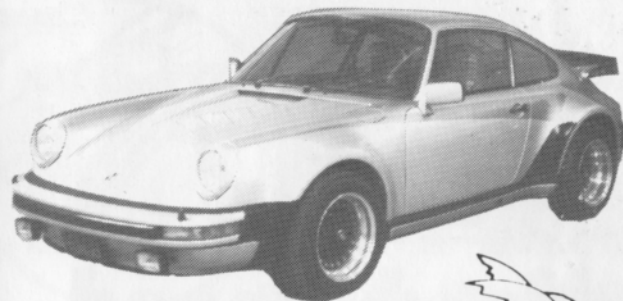


© 1982 BMW of North America, Inc. The BMW trademark and logo are registered trademarks of Bayerische Motoren Werke, A.G.

Erhard B.M.W. Inc.

24130 Telegraph Rd. at 9½ Mile, Southfield, 352-6031

1985 Waterford Digest



ClassicAuto
SHOWPLACE
LTD

1820 AUSTIN TROY, MICHIGAN 48083
PRIVATELY OWNED SPORTS AND SPECIAL INTEREST
AUTOMOBILES FOR SALE

UP TO 40 AT ONE INDOOR LOCATION
WE WILL SELL YOURS — PHONE FOR CONSIGNMENT DETAILS

524-0210

STUFF
overill racing

parts and service for serious racing

PANASPORT LIGHT ALLOY RACE WHEELS
KONI RACING SHOCKS
LOLA CARS
HEWLAND GEARBOX PARTS
FERODO BRAKE PADS

ROYAL OAK, MICHIGAN 48068 313-885-4177






Redford Speed

26577 GRAND RIVER
532-2050 or 532-6223
10-8 MON-FRI 10-6 SAT



Of Special Interest:

- SIDEMOUNT HEADERS
- ROLL BARS
- KONI SHOCKS
- SWAY BARS
- DRIVING LIGHTS
- COMP. SEAT BELTS AND HARNESSES
- RACING CAMS
- LAKEWOOD
- HOLLEY CARBS
- TRANS AM OIL PANS
- RACING OIL
- HOOKEE HEADERS
- HURST
- MALLORY & ACCEL
- IGNITION SYSTEMS



SYMBOL OF


















HURST SHIFTERS



CIBIE MARCHAL PARIS-RHONE

FOR
PORSCHE
SAAB
RENAULT
PEUGEOT


(313) 294-1700

Manufacturers of Quality Automotive
Performance Lighting Products
And Electrical Components

An **ACTIVITY** of Value

St. Clair Shores, MI 48082

New, Used reproduction Parts and Accessories
Custom Paint and Body Repair



HiTech Automotive

design and fabrication

DOUG FEHAN
BOB FEHAN
313/549-5410

4712 Fernlee
1st Block East of Coolidge, S. of 14
Royal Oak, Michigan 48073

(313) 862-8500



Security Associates, Inc.

COMMERCIAL. INDUSTRIAL. RESIDENTIAL SECURITY

JOHN G. NOLAN
State License #BA0088

16245 MEYERS
DETROIT, MICHIGAN 48235

SMR/PCA MEMBER

BILL COOK + PORSCHE + AUDI

"NOBODY EVEN COMES CLOSE"



37901 Grandriver at 10
Farmington Hills

OPEN MONDAYS TILL 9:00
TUES THRU FRI TILL 6:00

471-0044

FOREIGN AUTOMOTIVE SUPPLY, LTD.



Known for our **LOW, LOW PRICES**

OEM QUALITY PARTS • LARGE INVENTORY • REPAIR MANUALS
HIGH PERFORMANCE LIGHTS • BOSCH • UPS DAILY

Hours to serve you:
Weekdays: 8:30-7:30
Saturdays: 9:00-5:00
SUNDAYS: 11:00-3:00

1-75
380 West 11 Mile
Madison Heights
11 Mile ■ I-696
John R.

QUESTIONS? **542-6150**



Quartz Euro Code
Lighting by
MARCHALL,
HELLA

Exhaust Systems
by ANSA

Suspension by
KYB,
SUSPENSION
TECHNIQUES,
ADDCO

Racing Equipment
by BELL,
YANKEE

Rollbars, Air Dams,
Sports Car Apparel



Accessory House inc.

313-548-4488

23257 Woodward
Ferndale mi. 48220

VAST SELECTION OF
IMPORT AUTO ADORNMENTS
WORLD'S FINEST MANUFACTURERS
FOR THE DISCRIMINATING DRIVER



DON CASTLE



KARL RACENIS



KARL RACENIS



DON CASTLE



KARL RACENIS



DON CASTLE



DON CASTLE



KARL RACENIS



DON CASTLE



DON CASTLE

FALVEY MOTORS CARRIES LONG RACING HISTORY

A long history of car racing and the love of fine automobiles, brings Falvey Motors of Troy to the Waterford Hills Raceway year after year to sponsor the GT-4 racing division. This year's first Historic Race at Waterford saw Falvey Motors race a 1962 Austin Healy, still in its original condition. The same car was raced by Falvey's founder, Lawrence C. Falvey, in the early 1960's at Waterford.

Originally from Hungary, Falvey raced throughout central Europe, and after graduating from the University of Paris, with degrees in both electrical and mechanical engineering, imported Graham Paige and Dodge automobiles into Hungary, Austria, and Czechoslovakia. Just before the outbreak of World War II, Falvey joined his American friends in the automobile industry in the Detroit area.

With the money he had, Falvey started a gas station on Long Lake and Woodward. In 1946, Falvey began distributing imported automobiles in the mid-west, starting with the Austin. By the mid 1950's, he represented virtually every European import, including Jaguar, Mercedes, Porsche, Rolls Royce, Ferrari, Volkswagen

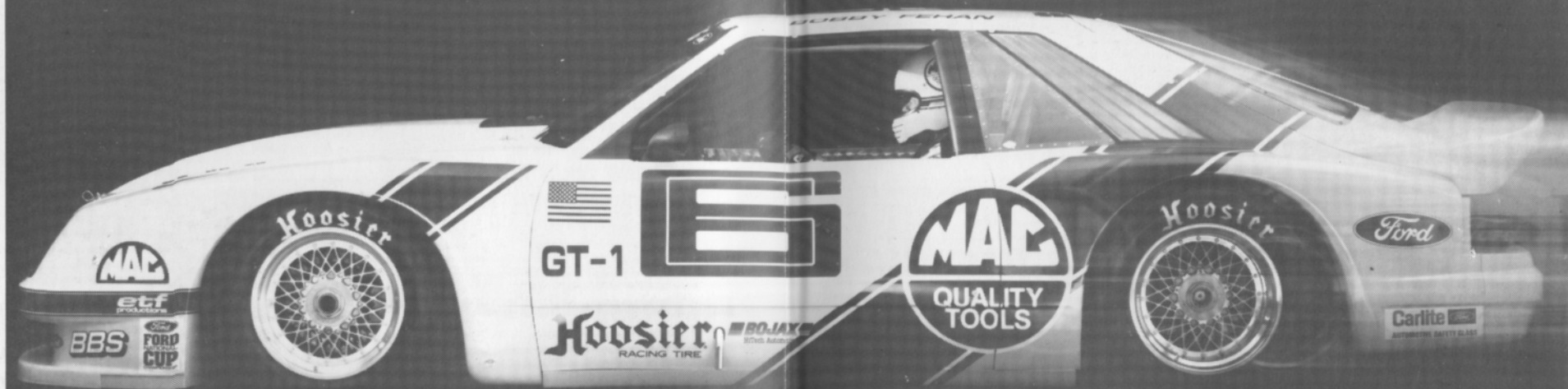


Falvey's 1962 Austin Healy, originally raced by Lawrence C. Falvey in the early 1960's, raced in the Historic Races, August 3.

and several other lines. In addition, Falvey operated several dealerships in Ferndale, Grosse Pointe, Pontiac and Redford. In 1974, the Falvey organization consolidated, and moved to the Troy Motor Mall, 15 Mile Road, between Crooks and Coolidge. Under the management of Mr. Falvey's daughter, Mary Falvey Fuller, the dealerships now carry Jaguar, Volkswagen, Saab, and Toyota. Falvey Motors carries parts for not only its current lines, but also for the MG, Triumph, Austin Healy, and Rover lines.

In the tradition of its founder, the Falvey organization still supports the Waterford Hills Races by providing pace cars and sponsoring a trophy for the overall season winner in the GT-4 division. Mr. Falvey's 1928 Bugatti was also shown at the Concours d' Elegance at Meadowbrook Hall, August 4.





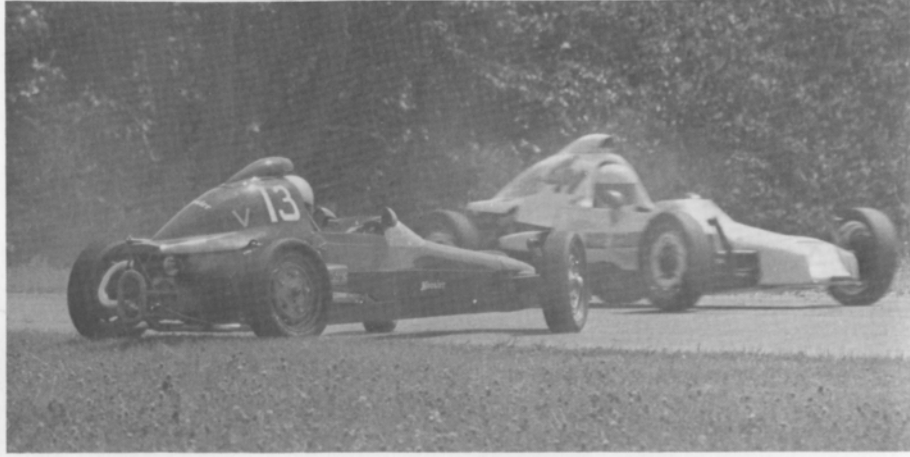
**MUSTANG GT
AND MAC QUALITY TOOLS...
THE PERFORMANCE TEAM**

**SEE THE MAC TOOL
GT-1 MUSTANG ON
SEPTEMBER 28-29 1985
AT THE
WATERFORD HILLS
MAC TOOL WEEKEND**

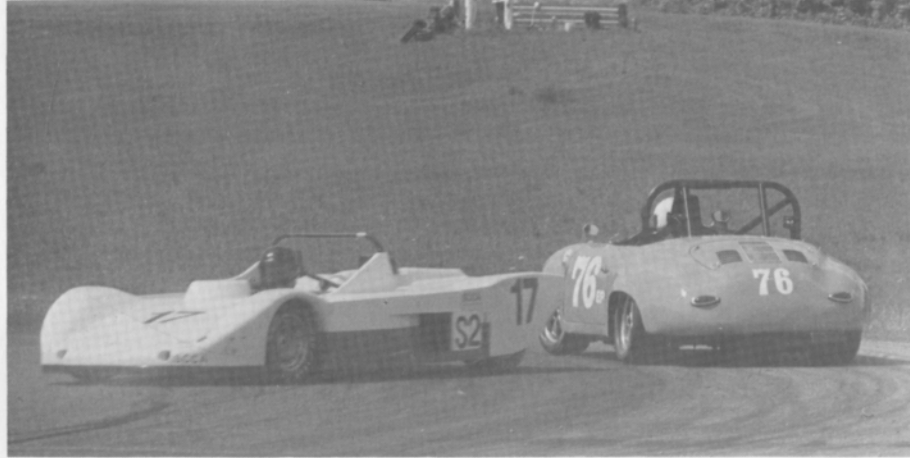


MOTORSPORT

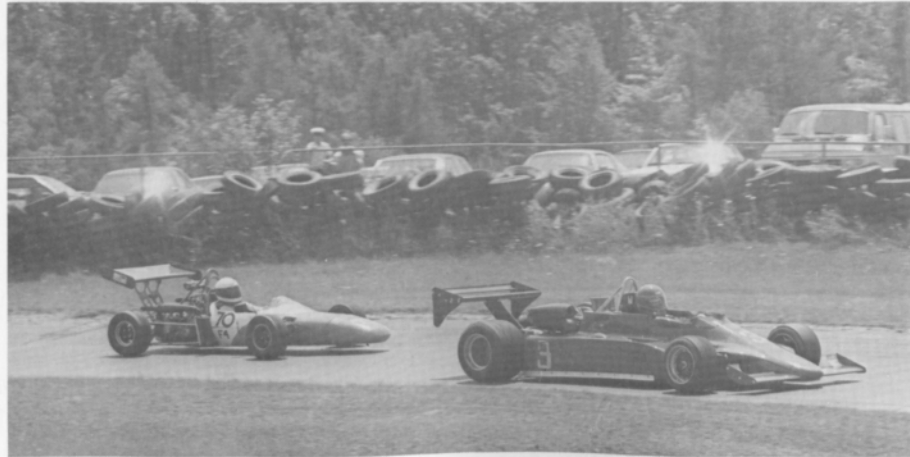
1985 Waterford Digest



AL BIZER



AL BIZER



AL BIZER

1985 Waterford Digest



AL BIZER



AL BIZER



AL BIZER

Comp T/A®

BF GOODRICH

T/A HIGH TECH RADIALS

**WE'VE GOT THE TIRES
TO MAKE YOUR
CARS AND TRUCKS
PERFORM.**



COMP T/A®

The Ultimate High-Performance
Street Radial.

RADIAL T/A® 60H

Optimum Performance...
Distinctive Style.

RADIAL T/A® 50

Solid Performer...
Classic Good Looks.

RADIAL MUD-TERRAIN T/A

RADIAL SPORT TRUCK T/A

RADIAL ALL-TERRAIN T/A™

Designed For The Highway...
Tough Enough For Off-Road.

**TO MAKE YOUR CAR
PERFORM, TALK TO A
PERFORMANCE
SPECIALIST.**

BF Goodrich TIRE CENTER



405 S. Grand Ave.
Lansing, MI 48933
(517) 482-0621

HOURS: 7:00 AM - 5:30 PM WEEKDAYS
7:30 AM - 1:00 PM SATURDAY



Crankshaft Craftsmen Inc.



CRANKSHAFT GRINDING
CAMSHAFT GRINDING
CRANKSHAFT WELDING
POLISHING-STRAIGHTENING
HIGH PERFORMANCE WORK
BEARINGS AVAILABLE

QUALITY BEFORE QUANTITY

RUSS TAYLOR - PRESIDENT

(366-0140)

2819 JEROME EAST OF I-75 • DETROIT

**THINK
WINK**



**CARS &
TRUCKS**

Satisfying Car Buyers For Over 42 Years

BILL WINK CHEVROLET

10700 FORD RD., BET. WYOMING & SCHAEFER
DEARBORN, MICHIGAN



582-5400

"KEEP THAT GREAT GM FEELING WITH GENUINE GM PARTS"



AUTOMETRIC BODY SHOPS

American .. Import

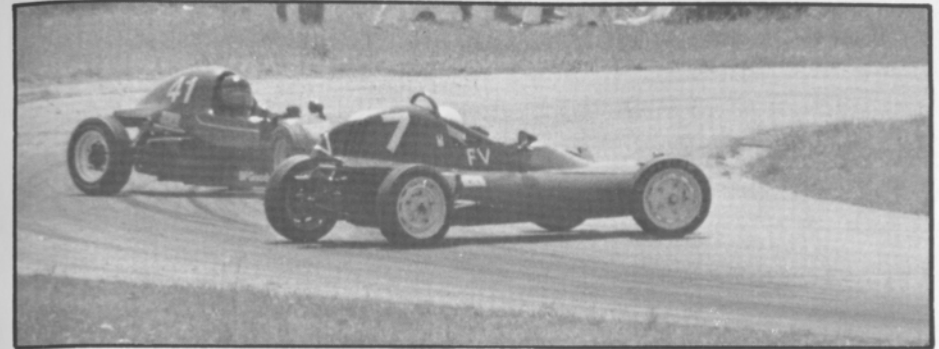


818 N. Main
Royal Oak, MI
398-0200

490 S. Telegraph
Pontiac, MI 48053
332-0600

8645 E. 10 Mile
Centerline, MI
757-7491

24465 Gratiot
East Detroit, MI
774-3455



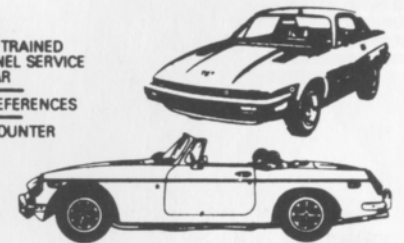
DON CASTLE

IMPORTED CAR SERVICE CO.

Call 293-5566

31529 UTICA RD., FRASER
BET. 13 & 14 MILE

- LET OUR TRAINED PERSONNEL SERVICE YOUR CAR
- LOCAL REFERENCES
- PARTS COUNTER



GERMAN MOTORS

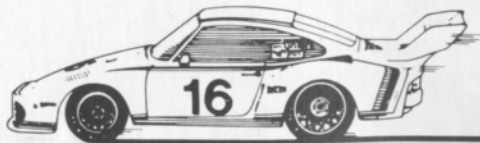
689-4940

PIRELLI & MICHELIN TIRES

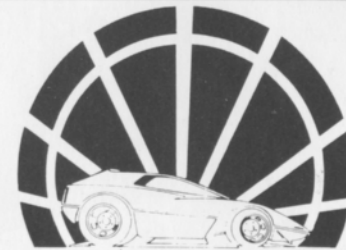
COMPLETE REPAIR SERVICE

- MERCEDES BENZ
- PORSCHE
- VOLKSWAGEN
- AUDI
- B-M-W

1725 E MAPLE RD (15 MILE) TROY
1 BLOCK EAST OF I-75



Complete Line of
Brand Name and
Custom Parts and
Accessories



Specialists in all
phases of High
Performance Work

RACELAND AUTO SUPPLY

PERFORMANCE RACING ENGINES

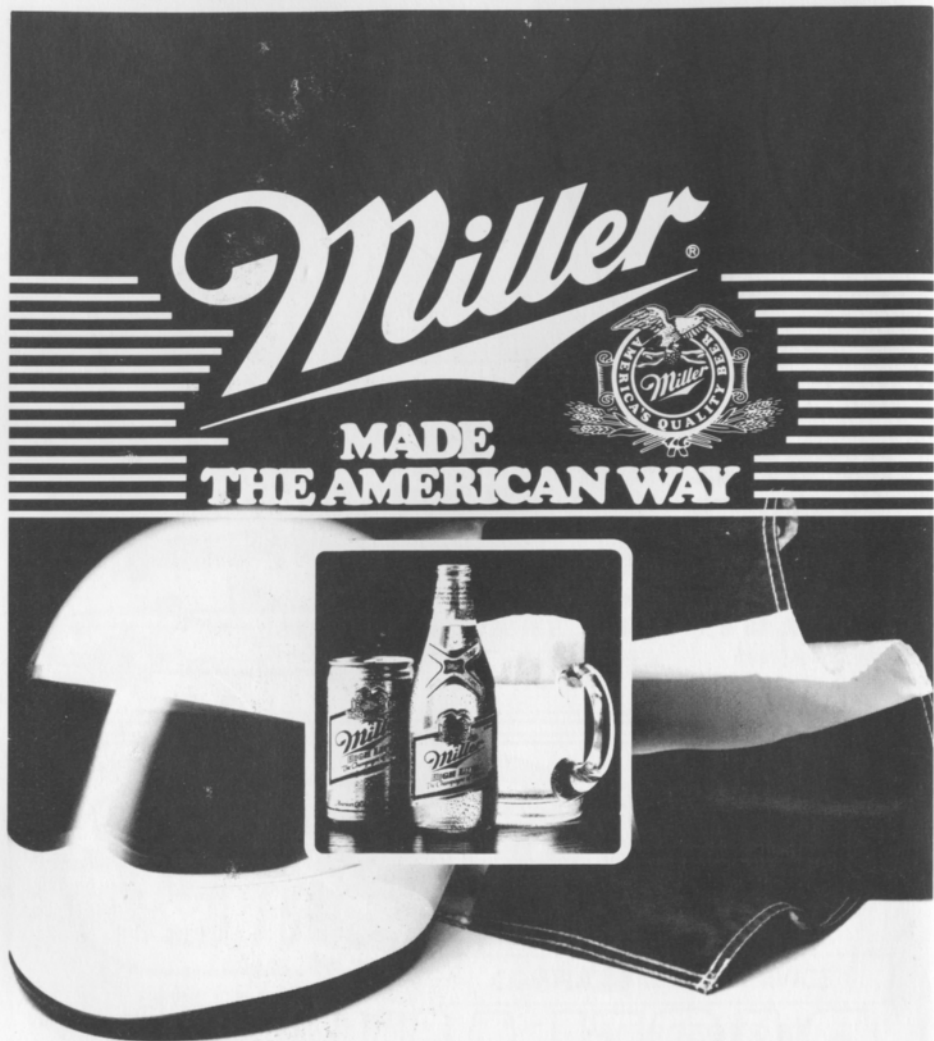
26700 W. 8 Mile Rd., Southfield, MI 48034

355-2288

Bet. Inkster and Telegraph

COMPLETE MACHINE SHOP

OPEN 6 DAYS A WEEK - CLOSED SUNDAY



OFFICIAL BEER SPONSOR

WATERFORD HILLS ROAD RACING

POWERS DISTRIBUTING CO., INC.

2000 PONTIAC DRIVE
PONTIAC, MICHIGAN 48053

682-2010

SEE DANNY SULLIVAN'S 1985 WINNING INDY 500
MILLER AMERICAN RACE CAR AT WATERFORD HILLS RR
AUGUST 25th

Beer Brewed by Miller Brewing Co., Milw., WI

LOOKing back

with Bizer August 1, 1965



*ED HOULEHAN HOLDS OUT
A SOGGY GREEN FOR
PETE HUCHINSON AND
PAUL SONDA . . .*



*. . . AND CALLS
IT A DAY — A VERY
WET DAY!*

Beck's-ULTRA HIGH PERFORMANCE

7000 SCHAEFER ■ DEARBORN ■ MICH. 48126
 (313) 846-2600
 (800) 482-9381 (Mich. toll free)

TIRES

GOODYEAR

BF Goodrich

YOKOHAMA

PIRELLI

BF Goodrich
RACE TIRE PROGRAM

SHOCKS

BILSTEIN
GAS PRESSURE SHOCK ABSORBER

WHEELS

BBS

GOTTA

wed's
TURBO WHEELS

ENKEI

centra CENTRA

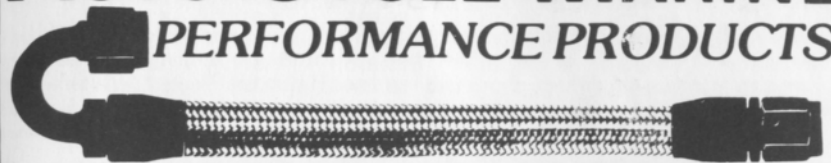
Epsilon
ROAD WHEELS

MSW



10% DISCOUNT TO TACA MEMBERS
 MAJOR CREDIT CARDS ACCEPTED

AUTO-CYCLE-MARINE PERFORMANCE PRODUCTS



"THE LARGEST INVENTORY IN THE MIDWEST"
 HOSE ★ FITTINGS ★ ADAPTERS

Aeroquip
high performance hose and fittings

(313) 280-1171

EARL'S
PERFORMANCE PRODUCTS

4940 Delemere, Royal Oak, MI 48073

Peter Betrus, Jr.

Catalog \$2

Thomas J. Betrus

Hoosier[®]

RACING TIRES

JAMALC RACING

(517) 223-8704

John
Morris

Al
Ciaramitaro

Average Lap Speed

Min/Sec	MPH	Min/Sec	MPH	Min/Sec	MPH
1:00	85.326	1:17	66.488	1:34	54.463
1:01	83.927	1:18	65.635	1:35	53.890
1:02	82.574	1:19	64.805	1:36	53.329
1:03	81.263	1:20	63.995	1:37	52.779
1:04	79.993	1:21	63.204	1:38	52.240
1:05	78.762	1:22	62.434	1:39	51.713
1:06	77.569	1:23	61.681	1:40	51.196
1:07	76.411	1:24	60.947	1:41	50.689
1:08	75.288	1:25	60.230	1:42	50.192
1:09	74.197	1:26	59.530	1:43	49.704
1:10	73.137	1:27	58.846	1:44	49.227
1:11	72.106	1:28	58.186	1:45	48.758
1:12	71.105	1:29	57.523	1:46	48.298
1:13	70.131	1:30	56.884	1:47	47.846
1:14	69.183	1:31	56.259	1:48	47.403
1:15	68.261	1:32	55.647	1:49	46.968
1:16	67.363	1:33	55.041		

The Waterford Hills Road Course is 1.4221 miles long (7,509 ft. center line of track). To determine the speed of any individual car, time it for one complete lap and read off the speed from this table.

Class Records

ASR	Ed Murray	Chevron	1:10.9	9/81
CSR	Evan MacDonald	M-2	1:10.5	9/78
DSR	Ed Murray	Jedi	1:12.5	4/85
S/2000	Larry Campbell	Lola	1:11.5	9/79
EP	Lou Livengood	Porsche 356	1:16.3	6/80
FP	Barry Hartzel	MG Midget	1:16.2	7/78
GP	Kirk Carlson	MG Midget	1:17.0	8/81
HP	Paul Cameron	Sprite	1:20.4	7/78
GT-1	Tim Taylor	Corvette	1:13.7	9/83
GT-2	J. Byron Walker	Datsun	1:16.5	9/80
GT-3	Craig Allen	Lotus Elan	1:16.4	9/83
GT-4	Jerry Morlewski	Fiat 124	1:19.0	9/83
GT-5	Ted Wollesen	Mini Cooper	1:19.9	5/84
SS-GT	Bill Bailey	Firebird	1:24.5	5/84
JSA	Bill Bailey	Mustang	1:26.2	6/85
SSB	Jack Broomall	Shelby	1:27.4	6/85
SSC	Ron Lindensmith	Fiat X1/9	1:29.6	9/82
FF	Vince Muzzin	Royale	1:09.4	6/78
FV	Lee McLeod	Lynx	1:15.7	7/81
**F/A	Andy Falco	March	1:06.1	8/83
F/C	Jay Novak		1:09.3	9/84
F440	Jay Novak	EPEE	1:16.0	8/84
F4	Stuart Lamont	Xpit	1:12.5	7/83
FFR	Mark Davison	Crossle 32	1:17.0	5/84

**track record

Racing Classes

To insure fairness in competition, all road racing cars are grouped into racing classes by the Sports Car Club of America in its General Competition Rulebook (GCR). Waterford Hills Road Racing observes the GCR regulations with some minor exceptions.

The five Competition groups are: Production (sports cars), Showroom Stock (GT cars and sports cars with minimal modification), Sports Racing (Highly modified engine and body over wheels), GT (enclosed cockpit passenger cars and former big production cars), and Formula (open wheels single cockpit). Racing groups are subdivided into classes of equally competitive cars based upon engine size and handling characteristics.

The cars listed below are representative of their racing classes and include most of those you will see at Waterford Hills.

PRODUCTION

EP	Porsche 356 series, MGB, Opel GT, Porsche 914/4, Triumph TR-4
FP	Saab Sonnet, MG Midget Mk III & IV, Lotus 7, Triumph Spitfire Mk III & IV & 1500
GP	MG Midget Mk I & II, Triumph Spitfire Mk I & II, MGA, Austin Healy Sprite, Fiat X1/9, Fiat 124 Spider, Alfa Romeo, Porsche Coupe
HP	Austin Healy Sprite Mk I & II, Fiat 850, MG Midget 948, Fiat Abarth

SHOWROOM STOCK

SS-GT	new class with current model cars of SSA plus additional modifications allowed.
SSA	Mustang Cobra, Mazda RX series, Porsche 924, Capri V-6, Datsun 280Z
SSB	Triumph TR-8, Scirocco, Dodge Colt, Datsun 200SX, Fiat 124
SSC	Fiat X1/9, Pinto, VW Rabbit, Renault LeCar, Mustang 2.3, MGB, Honda Civic, Toyota Corolla, Pontiac Astre

SPORTS RACING

ASR	over 1300 cc but less than 6000 cc
CSR	over 850 cc up to 1600 cc (with restrictions)
DSR	below or equal to 850 cc
S/2000	uses Ford 2000 cc overhead cam engines only

GT CLASSES

GT-1	Corvette, Camaro, Ford Cobra II, Shelby GT-350, Porsche 911 SC, Dodge Aspen
GT-2	Datsun Z series, Mazda RX7, Porsche 914/6 & 924 Turbo, Sunbeam Tiger, Triumph TR-6 & TR-8
GT-3	Opel 1900, Datsun 510 1800, Mustang 2300, Pinto 2000 & 2300, Cosworth Vega
GT-4	Fiat 124 Sports Coupe, Pinto 1600, Toyota Celica, Dodge Colt, Toyota Corolla 1600, Renault LeCar, Datsun 510 1600, Ford Escort/Lynx, VW Rabbit & Scirocco
GT-5	Datsun 200SX, Austin/Morris Mini Cooper, VW 1300, NSU TT, Honda Civic, Fiat 124 1200, Toyota Corolla 1200

FORMULA

FF	Formula Ford — Cortina or Pinto 1600 cc engine, strict weight to engine ratio with driver's weight included in total legal weight, very equal class
FFR	Formula Ford Radial — the cars are the same as the above class except they must use BF goodrich T/A radial tires.
FV	Formula Vee — all Volkswagen components, 1200 cc engine, driver's weight included in total legal weight, very competitive class
F/ATLC	Formula Atlantic — choice of engines in over 1,100 cc up to 16000 cc range, wings and other modifications allowed, not meant to be an inexpensive race car
F/CNTL	Formula Continental — engine up to 1100 cc, rear wings allowed, combines the modifications of the previous Formula C and Formula Super Vee classes
F440	Formula 440 — utilizes Fuji two-cycle snowmobile engines and drive train, rigid suspension, wings permitted
F4	Formula Four — Canadian class, motorcycle engine power plant, engine size determines weight and transmission allowed

Flags

yellow with red stripes



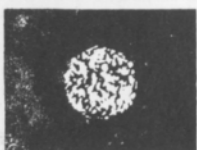
Take care, oil has been spilled or a slippery condition exists somewhere in your vicinity. Look at the track surface.

black



Sloppy or dangerous driving. Complete the lap you are on, stop at the Start/Finish line for consultation with Chief Steward. Waving Black Flag (displayed on all corner stations) means the race is stopped. Slow down immediately and proceed around the track with extreme caution to the pit lane for a re-start.

black with orange ball



(Meatball Black Flag) There is something mechanically wrong with your car. Proceed to your pits at reduced speed.

green



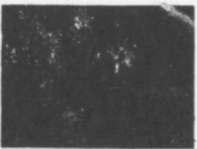
(Or no flag) Course is clear.

yellow



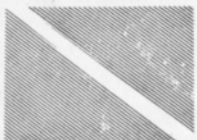
(Stationary) Take care, danger, no passing.
(Waving) Great danger, be prepared to stop, no passing.

red



Waving red (displayed by the Starter only) means the race is stopped, slow down immediately and proceed around the track with extreme caution to the pit lane.

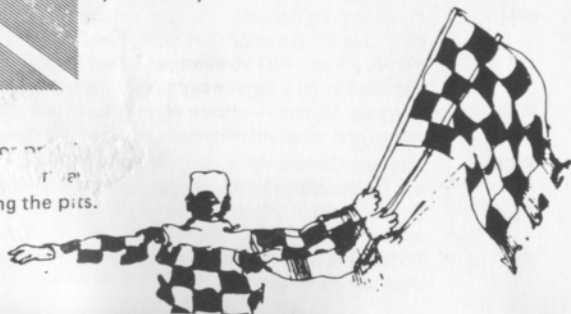
blue with diagonal yellow stripes



(Motionless) Another competitor is following you closely.

checkered

You have finished the race (or a session). Complete one "caution" lap at reduced speed before entering the pits.



Waterford Hills Course Map

a 1.5 mile asphalt road course at Waterford, Michigan

