

FALVEY
MOTORS



THE BEST JAGUARS EVER BUILT:

There is no formula for the creation of a classic. Yet, for more than 50 years Jaguar has given the world classic after classic.

Here are two of the finest Jaguars ever built: the magnificent Series III sedan and the awesome V-12 powered S-type GT.

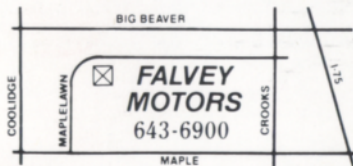
Both share the inimitable Jaguar qualities of graceful design, quick response and agile handling. Both are equipped with precise power rack

and pinion steering, racebred four-wheel independent suspension and decisive four wheel power disc brakes.

Inside, Jaguars provide a level of luxury and quiet seldom, if ever, equalled in

a high performance motor-car. Test drive them today. ENJOY TOMORROW BUCKLE UP TODAY.

JAGUAR
A BLENDING OF ART AND MACHINE



15 Mile (Maple) between Coolidge and Crooks

40 years... Creating the Competition!!

FALVEY

WATERFORD HILLS
ROAD RACING
oakland county sportsmens club



1986
WATERFORD
DIGEST
AUGUST \$2.00

TOYOTA TOYOTA TOYOTA TOYOTA TOYOTA TOYOTA TOYOTA TOYOTA

PACE CAR FURNISHED BY

PAGE TOYOTA



8½ & TELEGRAPH
SOUTHFIELD, MICH.

352-8580

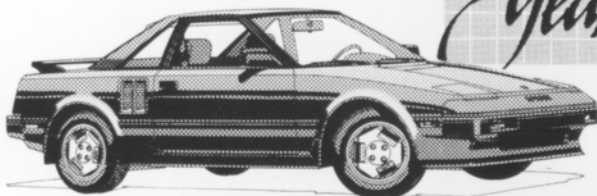
MICHIGAN'S #1 TOYOTA DEALER
IN SALES, SERVICE AND BODY REPAIR



WINNER OF THE NATIONAL SERVICE AND
CUSTOMER RELATIONS AWARD FOR 7 YEARS

FINE SELECTION OF USED IMPORT
& DOMESTIC ECONOMY CARS

MOTOR TREND MAGAZINE

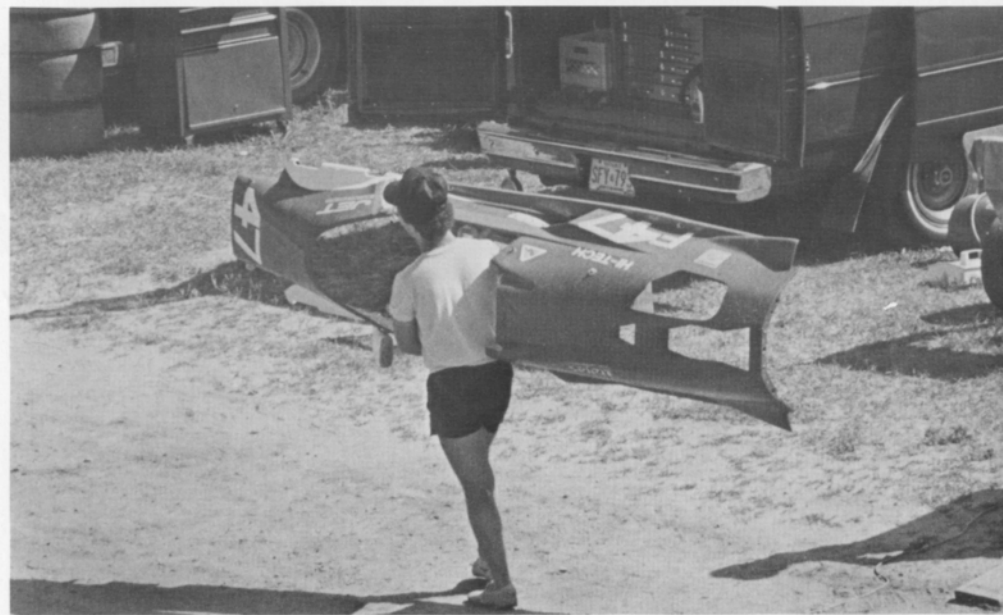


TOYOTA MR2

**THE PRIX-RACE FAVORITE —
THE TOYOTA CELICA SUPRA.**

TOYOTA TOYOTA TOYOTA TOYOTA TOYOTA TOYOTA TOYOTA TOYOTA

DON CASTLE



Contents

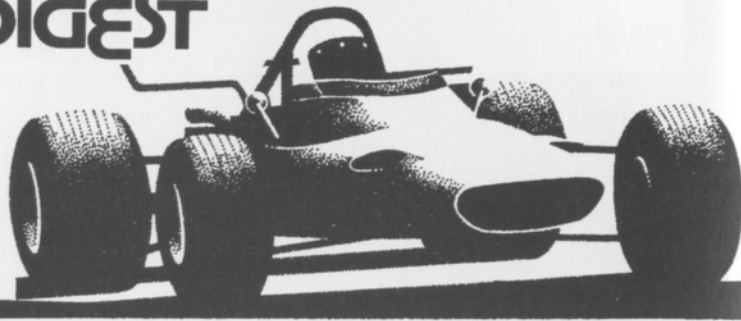


- 2. The Inside Line
- 3. Officials
- 10. Race Results
- 29. Looking Back With Bizer
- 32. Average Lap Speed Chart
- 32. Class Records
- 33. Racing Classes
- 34. Flags
- 35. Course Map
- 36. Racing Schedule

Staff

Editor: *DAN HILL*
 Feature Editor: *SHERRY HARRINGTON*
 Advertising Director: *JERRY MORLEWSKI*
 Design and Production: *TAURUS ADVERTISING*
 Photographers: *AL BIZER*
 DON CASTLE
 KARL RACENIS

Cover Photo by *AL BIZER*



The Inside Line

Welcome to Waterford Hills Road Racing. We're glad to see you and happy that you choose to support our racing program.

There are many people who have stereotyped impressions of the type of people who are race car drivers and the people who "hang around" race tracks.

They think it's a "good ole boy, beer drinking" atmosphere.

Good ole boys? Yes -- but maybe not in the way they think. On the whole, those associated with Waterford Hills Road Racing, Inc. (WHRRI) are just plain good people -- people you can count on -- people who care about others. Some are race car drivers, some are specialty workers like those who work on the corners, those who act as scrutineers, and those who work in timing and scoring. Others are fans or pit crew members who come out to watch their families and friends.

It's a family affair. It's a place you can bring the kids. It's a place featuring husband and wife racing teams, father and son teams, and brother/brother teams.

And it's a great mix of professionals, skilled and blue collar workers all working side by side. Doctors, auto company execs and lineworkers, computer experts, radio and advertising reps, mechanics and musicians, retirees and students.

Along with everyone associated with WHRRI are the weekend race sponsors -- companies and corporations who sponsor many of our race weekends. The racing this weekend is sponsored by Powers, the Miller Beer distributor for Oakland County.

As for the beer drinking stereotype. There will be beer drinking on the spectator -- but the beer drinking won't start in the paddock until 6 p.m. and all cars are off the track. It's not allowed in the paddock at any other time. This isn't a "sometimes invoked" rule, it's an "all the time" rule.

If you'd like to find out about becoming involved with Waterford Hills Road Racing, join us for a meeting on the first Wednesday of every month in the Oakland County Sportsmen's Club Clubhouse. We'd love to see you.

Again, we'd like to thank you, Miller Beer and Powers Distributors for joining us this weekend. We hope the weather is good, the racing is great and that you enjoy yourselves.

Sherry Harrington

AL BIZER



Officials

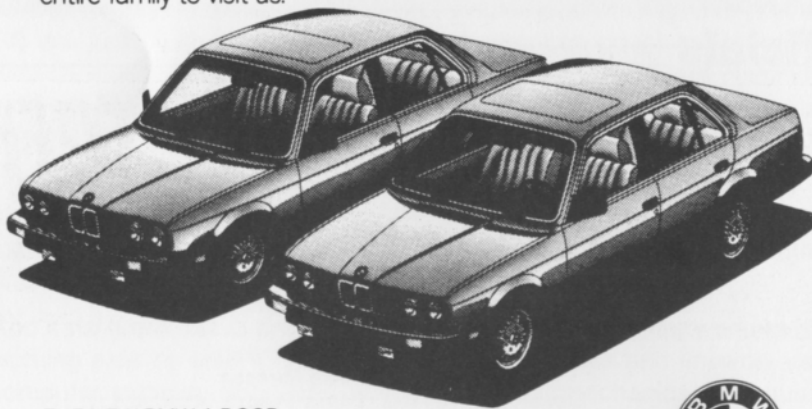
President	Don Burry
Secretary	Burck Grosse
Vice President	Dave Shook
Director of Racing	Jerry Morlewski
Race Coordinator	Dave Hinman
Chief Steward	John Morris
Chief of Flags & Communications	Willy Perez
Chief Registrar	Carol Humphreys
Chief of Safety	Blackie Meyers
Chief of Timing & Scoring	Peggy Krom
Chief Starter	Hal Goff
Chief of Tech	Dave Gernaey
Asst Chief	Eddie Atkinson
Stewards of the Meet	Bernie Fling Peter Quenet
Licensing Chairman	Jerry Shiloff
Membership Chairman	Diane Wollesen
Trophy Chairman	Cynthia Kempton
Grid Marshall	Emily Whitehead
Paddock Marshall	Bob Albo
Course Control	Blackie Meyers
Sound Control	Roger Roeske
Promotions	Mike White
Public Relations	Sherry Harrington
Director of Facilities	Jim McIntosh
Controllor	Danny MacDonald
Newsletter Editor	Jack Pringle

NOW WHEN YOU ENTER THE WORLD OF BMW SPORTS SEDANS, YOU CAN BRING YOUR ENTIRE FAMILY.

Typically, 2-door sports sedans have been the exclusive province of drivers with no real use for the backseat.

The new BMW 4-door, 3-Series sports sedans have opened their doors to a more diverse group: those who desire exhilarating performance, but have something special to put in the backseat—a family.

If you'd like to test-drive one of our new 4-door BMW's, bring your entire family to visit us.



THE NEW BMW 4-DOOR
325 AND 325e



THE ULTIMATE DRIVING MACHINE.

©1986 BMW of North America, Inc. The BMW trademark and logo are registered.

Erhard B.M.W. Inc.

24130 Telegraph Rd. at 9½ Mile, Southfield, 352-6031

Complete Line of
Brand Name and
Custom Parts and
Accessories



Specialists in all
phases of High
Performance Work

RACELAND AUTO SUPPLY PERFORMANCE RACING ENGINES

26700 W. 8 Mile Rd., Southfield, MI 48034

355-2288

Bet. Inkster and Telegraph

COMPLETE MACHINE SHOP

OPEN 6 DAYS A WEEK - CLOSED SUNDAY

RACING WHEELS **Panasport**

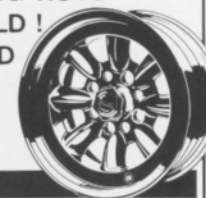


FORMULA FORD WHEELS
FOR
SWIFT · CITATION · REYNARD · OTHERS

- STRONG, LIGHT WEIGHT ALUMINUM
- BRAKE COOLING ONE PIECE DESIGN
- USES STANDARD LUG NUTS
- GOOD LOOKING GOLD!
- REASONABLY PRICED

STUFF
averill racing

(313) 350-2881



STUFF averill racing

AUTHORIZED DEALER FOR:

- LOLA CARS ·
- HEWLAND SPARES ·
- KONI SHOCKS ·
- FERODO BRAKES ·
- MOMO STEERING WHEELS ·
- LIFELINE FIRE SYSTEMS ·
- PULSAR BATTERIES ·
- HYLOMAR PRODUCTS ·
- GAUGES ·

AND MUCH MORE...

parts and service for serious racing

CRANE
ROCKERS

AR
CYCLONE
ANTI REVERSIONARY
RACING HEADERS



Cyclone
ANTI REVERSIONARY RACING HEADERS

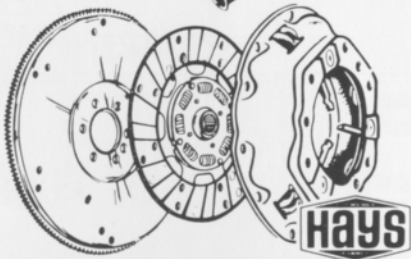
Redford Speed

26577 GRAND RIVER
532-2050 or 532-6223
10-8 MON-FRI 10-6 SAT

Of Special Interest:
SIDEMOUNT HEADERS
ROLL BARS
KONI SHOCKS
SWAY BARS
DRIVING LIGHTS
COMP. SEAT BELTS
AND HARNESSSES
RACING CAMS
LAKEWOOD
HOLLEY CARBS
TRANS AM OIL PANS
RACING OIL
HOOKER HEADERS
HURST
MALLORY & ACCEL
IGNITION SYSTEMS



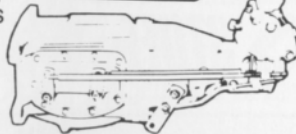
SYMBOL OF
SW
EXCELLENCE



CRANE
Cams



HURST
SHIFTERS



MR. **G** GASKET CO.

EF Hutton
Great Lakes Region

SMR/PCA MEMBER

**BILL
COOK** PORSCHE

"NOBODY EVEN COMES CLOSE"



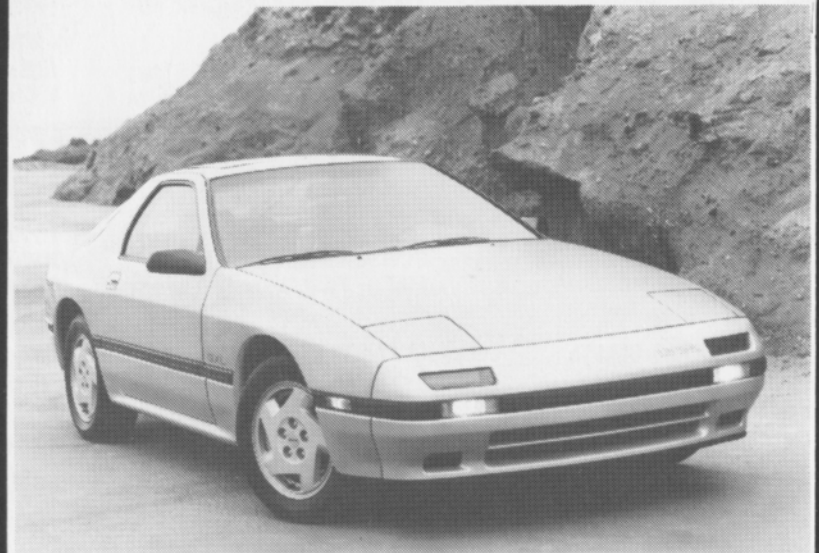
37901 Grandriver at 10
Farmington Hills

471-0044

OPEN MONDAYS TILL 9:00
TUES THRU FRI TILL 6:00

**BILL
COOK** **mazda**

37911 Grand River at 10 Mile Rd.
Farmington Hills, MI 471-0800



**BILL
COOK** **mazda**

"Where Excellence is the Standard, Not the Option"

SATURDAY CLASS RACES JULY 26-27, 1986 CLASS WINNERS

CLASS	DRIVER	CAR	BEST LAP
RACE 1			
GT4	JERRY MORLEWSKI	FIAT 124 - RED	1:20.77
GT5	TED WOLLESEN	MINI COOPER - YELLOW	1:21.29
ITS	JOHN HEENEY	DATSUN 280Z - YLW/WHT	1:27.15
ITA	DEAN VOLTMER	MUSTANG II - BLUE	1:30.76
ITB	PEGGY KROM	SCIROCCO - RED	1:30.10
ITC	CAL CORTRIGHT	FORD FIESTA-ORANGE	1:33.59
SSGT	JOHN BACON	TRANS-AM - BLU/SIL	1:27.46
SSA	SCOTT MCNEIL	DODGE SHELBY - RED	1:28.84
SSB	RON MILLER	CRX - BLACK	1:27.98
SSC	RAY KROM	VW GTI - SILVER	1:28.31
RACE 2			
FX	DAN BOLTON	EXFORD 002 - RED	1:28.05
FV	KERRY BOWMAN	CARACAL C - YELLOW	1:17.66
RACE 3			
S2	JOHN SCHERER	LOLA - RED	1:14.09
SREN	DAN HANLEY JR.	RENAULT - WHT/ORANGE	1:25.60
EP	J. MIKE RYAN	PORSCHE - BLACK	1:18.40
FP	MARY WOLLESEN	MG MIDGET - BLACK	1:27.62
GP	ERIK SKIRMANTS	PORSCHE - WHITE/MRN	1:23.43
HP	TONY MESSINA	FIAT - RED	1:27.49
RACE 4			
GT1	DOUG BUIST	CORVETTE - RD/BLK/SIL	1:15.40
GT3	KEN NELSON	OPEL MANTA - SILVER	1:19.33
RACE 5			
FF	SCOTT MOORE	ZINK Z10 - RED/SLVR	1:18.00
FFR	GREG WILKINSON	TITAN 6 - BLUE	1:18.58
F4	GRAEME BATES	XPIT - BLACK	1:17.54

SUNDAY CLASS RACES JULY 26-27, 1986 CLASS WINNERS

CLASS	DRIVER	CAR	BEST LAP
RACE 1			
GT4	JERRY MORLEWSKI	FIAT 124 - RED	1:22.35
GT5	TED WOLLESEN	MINI COOPER - YELLOW	1:26.71
ITS	JOHN HEENEY	DATSUN 280Z - YLW/WHT	1:27.17
ITA	DEAN VOLTMER	MUSTANG II - BLUE	1:29.81
ITB	PEGGY KROM	SCIROCCO - RED	1:31.94
ITC	CAL CORTRIGHT	FORD FIESTA-ORANGE	1:34.06
SSX	DOUG GOAD	FIREBIRD - BLACK	1:25.90
SSGT	JOHN BACON	TRANS-AM - BLU/SIL	1:27.20
SSA	TERRY DUVALL	PONTIAC FIERO-BLACK	1:30.65
SSB	RON MILLER	CRX - BLACK	1:27.18
SSC	RAY KROM	VW GTI - SILVER	1:29.66
RACE 2			
FX	DAN BOLTON	EXFORD 002 - RED	1:28.25
FV	KERRY BOWMAN	CARACAL C - YELLOW	1:18.00
RACE 3			
CSR	GREGG PALOMBO	MERLYN MK11 - RED	1:15.68
SREN	TOM KOZAK	SP RENAULT - RED	1:21.24
EP	SKIP FROH	PORSCHE - BLUE	1:17.87
FP	JOHN KUBIAC	SPITFIRE - BLUE	1:20.86
GP	ERIK SKIRMANTS	PORSCHE - WHITE/MRN	1:22.21
HP	TONY MESSINA	FIAT - RED	1:26.19
RACE 4			
GT1	DOUG BUIST	CORVETTE - RD/BLK/SIL	1:15.31
GT3	KEN NELSON	OPEL MANTA - SILVER	1:19.19
RACE 5			
FF	LEWIS COOPER, JR.	SWIFT DB1 - BLACK	1:12.22
FFR	GREG WILKINSON	TITAN 6 - BLUE	1:19.87
F4	GRAEME BATES	XPIT - BLACK	1:18.65

FEATURE RACES JULY 26-27, 1986

POSITION CLASS	DRIVER	CAR	BEST LAP
FEATURE 1			
1-FV	KERRY BOWMAN	CARACAL C - YELLOW	1:16.05
2-FV	SCOTT KIEFER	CARACAL B - SILVER/BL	1:17.39
3-FV	STU DELANEY	CALDWELL D-13 - RED	1:17.44
4-FV	JAMES BOWMAN	LYNX C-BL/YLW/WH	1:18.30
5-FV	KEN WINTERS	CARACAL D-RED/WHITE	1:18.26

WILLIAM A. KIEFER
President

SCOTT W. KIEFER
Vice-President

Micro Gauge, Inc.

CNC Machining
O.D. Grinding
Precision Honing

(517) 546-7036

5910 E. Grand River
Howell, MI 48843

FEATURE 2

1-GP	PAT NOWAK	SPRITE - BLACK	1:22.13
2-GP	ERIK SKIRMANTS	PORSCHE - WHITE/MRN	1:21.98
3-GP	ROBERT ANDERSON	SPITFIRE - RED	1:22.44
4-GP	JOHN PAYNE	MG MIDGET - SILVER	1:25.72
5-SSX	TOM GOAD	FIREBIRD - RED/SLV	1:25.67

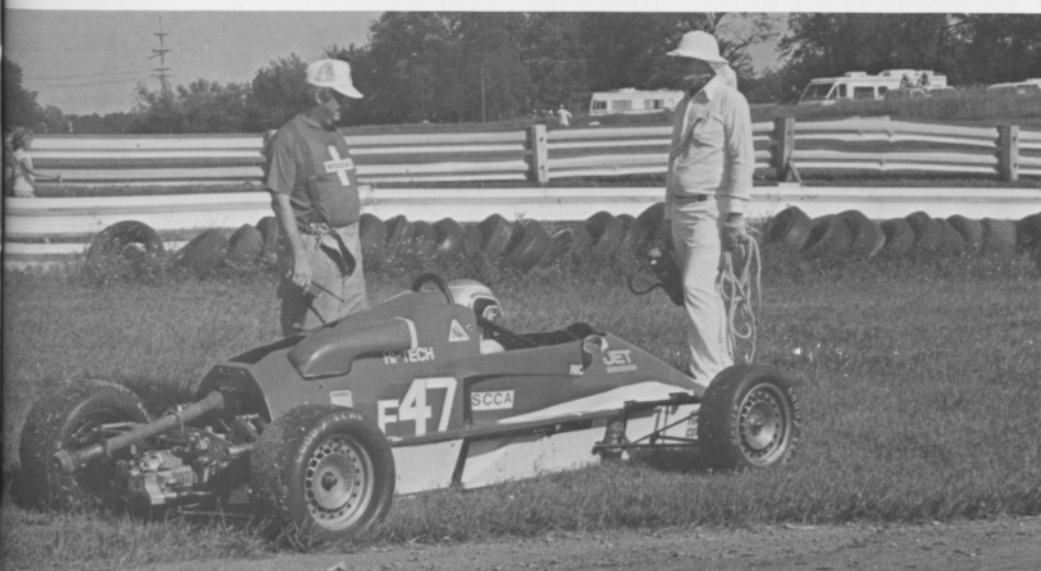
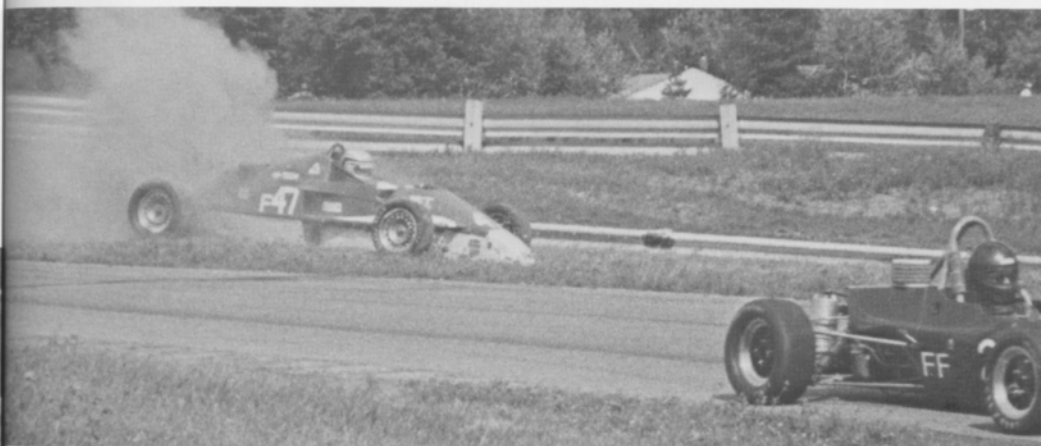
FEATURE 3

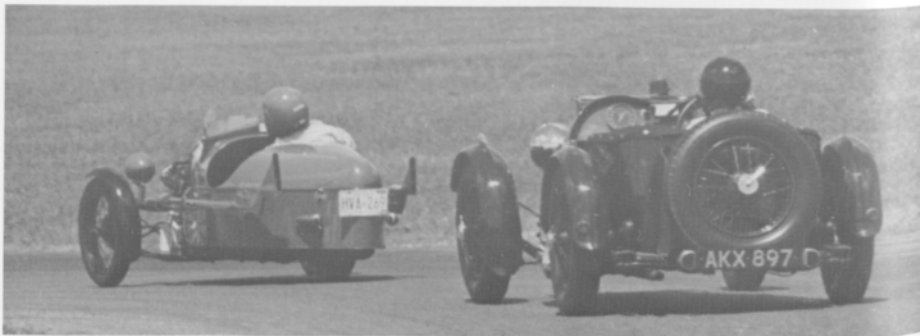
1-GT1	DAVE BUIST	FIERO - SILVER	1:15.73
2-CSF	GREGG PALOMBO	MERLYN MK11 - RED	1:18.21
3-EP	SKIP FROH	PORSCHE - BLUE	1:17.35
4-GT3	KEN NELSON	OPEL MANTA - SILVER	1:20.24
5-EP	JACK CHAMBERLIN	PORSCHE - RED	1:19.51

FEATURE 4

1-FF	J. LEWIS COOPER III	SWIFT DB1 - BLACK	1:12.78
2-FF	RON PHILLIPS	VAN DEIMAN - BLUE/SLV	1:12.89
3-FF	STEVE WAGLAND	FERRET MK4 - GREEN	1:13.30
4-FF	DON KITCH	CROSSLE 32F - RED/YLW	1:14.12
5-FF	ARTHUR KUHN	VAN DEIMAN RF82-BLUE	1:14.20

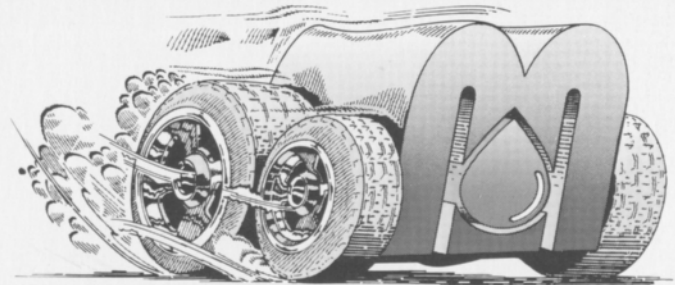
DON CASTLE





PHOTOS BY AL BIZER

DON CASTLE

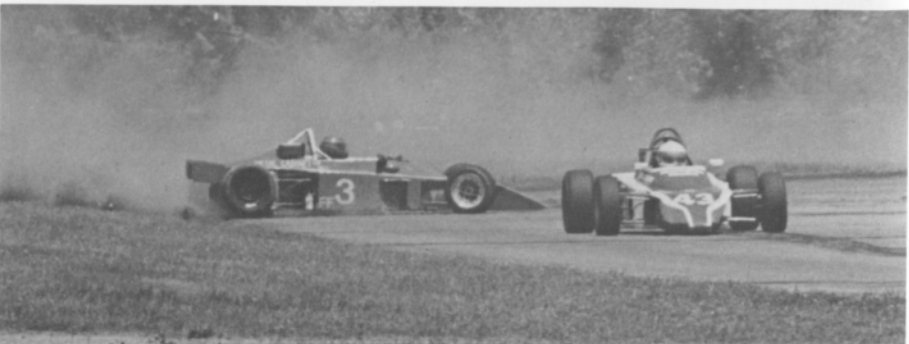
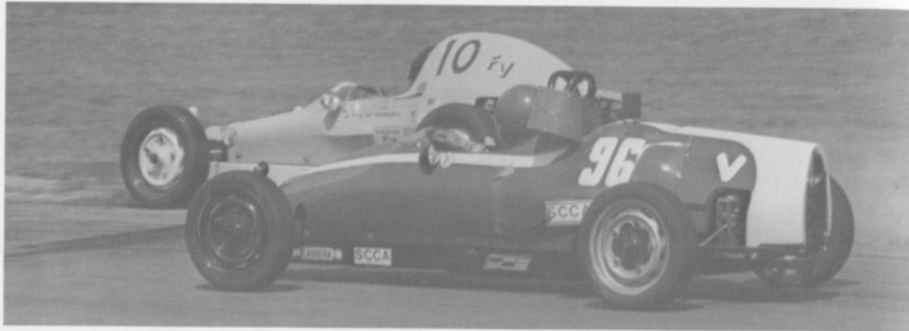
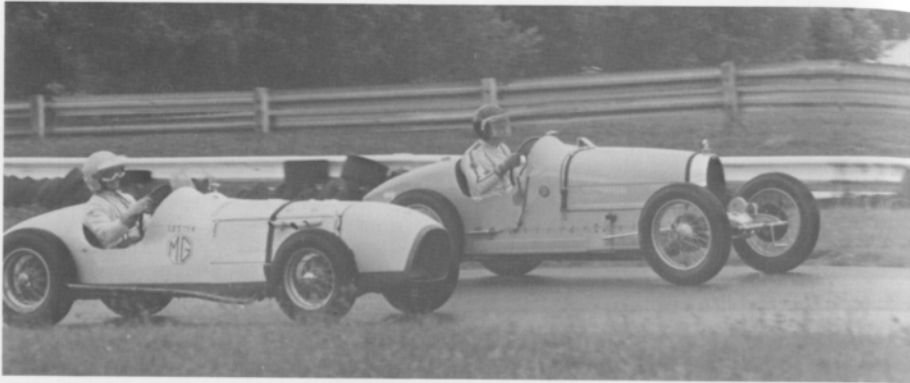


See you in the winner's circle!


Give your car the competitive edge, with Mid-States Petroleum, the official supplier of Union 76 racing gasoline at Waterford Hills. We also carry CAM-2 and Howell racing gasolines, racing methanol, motor oils, and lubricants, that will have you leading the pack. Call Mid-States today and get the edge!



Mid-States Petroleum, Inc.
P.O. Box 186 • Troy, Michigan 48099
In Michigan, call 1-800-482-2611
For rest of USA, call 1-800-554-0500



KAMEI • BOGE • LOBRO • LEISTRITZ • BILSTEIN • HELLA • BOSCH • RONAL



IMPORT SERVICE SPECIALISTS

DEDICATED TO
DOING IT RIGHT
FOR OVER 14 YEARS

681-8081 **335-5424**
3080 W. HURON 1803 ORCHARD LK. RD.
WATERFORD BLOOMFIELD TOWNSHIP

KAMEI • BOGE • LOBRO • LEISTRITZ • BILSTEIN • HELLA • BOSCH • RONAL



WE'RE BACK!

1985 THE CHAMPIONSHIP SEASON • IMSA CAMEL GTO: CHAMPION JOHN JONES, MOTORCRAFT FORD MUSTANG — FORD WINS: 14 OUT OF 17 RACES — 12 POLE POSITIONS — 13 FASTEST RACE LAPS — MANUFACTURERS' CHAMPIONSHIP • **NASCAR WINSTON CUP:** FORD WINS 14 OF 28 RACES — BILL ELLIOTT, COORS/MELLING FORD THUNDERBIRD: RECORD 11 NASCAR SUPERSPEEDWAY WINS — 11 POLE POSITIONS — ELJER DRIVER-OF-THE-YEAR AWARD — VOTED NASCAR'S MOST POPULAR DRIVER — ALL-TIME SEASON EARNINGS RECORD OF \$2,383,186 — WORLD STOCK CAR QUALIFYING RECORD AT 209.398 MPH — WORLD RECORD FOR 500-MILE RACE AVERAGE SPEED AT 186.288 MPH • **NHRA PRO STOCK:** SIXTH-TIME CHAMPION BOB GLIDDEN, CHIEF AUTO PARTS FORD THUNDERBIRD — WINNER 5 OF 13 NHRA EVENTS — TOP QUALIFIER 10 TIMES — SET NHRA NATIONAL PRO STOCK RECORDS FOR TOP SPEED (186.87 MPH) AND ELAPSED TIME (7.49 SECONDS) — 4 ELAPSED TIME TRACK RECORDS — 2 TOP SPEED TRACK RECORDS • **LYN ST. JAMES, FORD MUSTANG PROBE:** FASTEST WOMAN IN RACE HISTORY ON A CLOSED COURSE AT 204.233 MPH — SET 13 NATIONAL AND INTERNATIONAL SPEED RECORDS • **NASCAR WINSTON CUP ROOKIE OF THE YEAR:** KENNY SCHRADER, SUNNY KING FORD THUNDERBIRD • **SCORE/HDRA OFF-ROAD CHAMPIONSHIP:** CLASS 7 CHAMPION MANNY ESQUERRA, CHIEF AUTO PARTS FORD RANGER — WINNER 5 OUT OF 10 EVENTS — OFF-ROAD RACING "TRIPLE CROWN" WINNER FOR SECOND TIME — FIFTH CLASS 7 CHAMPIONSHIP IN 6 YEARS • **NHRA FUNNY CAR:** CHAMPION KENNY BERNSTEIN, BUDWEISER KING/MOTORCRAFT FORD TEMPO — WINNER 6 OF 13 NHRA EVENTS — TOP QUALIFIER 6 TIMES — 5 ELAPSED TIME TRACK RECORDS — SET NHRA ELAPSED TIME NATIONAL FUNNY CAR RECORD (5.569 SECONDS)

Racing into the future. 



**At your service . . .
with trained technicians.**

Trust your Subaru to the experts. Complete bumper-to-bumper service and maintenance.

THE 1986 SUBARU®
Inexpensive. And built to stay that way.

M & W MOTORS, INC.

44756 N. Gratiot, MT CLEMENS, MI 48043 — 465-2661





HOURS:
MON. 8-7
TUES. Thru FRI. 8-6
SAT. 8-5

Oxford
 1045 N. Lapeer Rd.
 (Next to the
 Nugget Restaurant)
628-7440

Waterford
 3098 M-59
 (East of Elizabeth
 Lake Road)
682-8380



**WATCH FOR THE
 TOP VALUE
 MUFFLER SHOP'S
 FORMULA FORD**

BE A WINNER with these SPECIALS!
 at
TOP VALUE Muffler Shops

**—Mufflers & Brakes—
 CUSTOM PIPE BENDING**

**WE WILL HONOR
 AND BEAT ANY
 PRICE FOR
 EXHAUST, BRAKES
 & SHOCKS**

Coupons must be presented
 before job quote.

**COUPON
 FREE**
**18 Point Chassis Inspection
 On ALL Vehicles**
 This offer good w/coupon thru 10-25-86
 Clip & Use

**COUPON
 OIL - LUBE - FILTER**
 Up to 5 Quarts of Valvoline
 10W30 Oil
\$9.88

This offer good w/coupon thru 10-25-86
 Clip & Use

**COUPON
 MUFFLERS**
\$24.95 INSTALLED
MOST U.S. CARS
 Includes Clamps • Lifetime Warranty
 This offer good w/coupon thru 10-25-86
 Clip & Use

**COUPON
 Heavy Duty
 SHOCKS**
Made by Monroe
\$14.95 each installed
FRONT OR REAR • MOST U.S. CARS
 This offer good w/coupon thru 10-25-86

Clip & Use

**COUPON
 FRONT DISC BRAKES**
 • Free Inspection • Install New Pads
 • Resurface Rotors • Road Test
 • Repack Non-drive Bearing
 • Inspect Hydraulic System
 • Semi Metallic Pads Extra
\$29.88 MOST CARS
 This offer good w/coupon thru 10-25-86
 Clip & Use



AL BIZER



KARL RACENIS



KARL RACENIS

KARL RACENIS

BFGOODRICH T/A RADIALS TAKE ON THE ROAD™

COMP T/A
The Ultimate High-Performance Tire

EURO RADIAL T/A
The Optimal Blend of Handling, Treadwear, Quality and Style

RADIAL T/A
The New Generation of the Original Race-Winning Street Radial



CHOOSE THE RIGHT T/A® RADIAL

	HANDLING	WET & DRY TRACTION	TREADWEAR	RIDE	SPEED RATING	SIDEWALL
COMP T/A The Ultimate High-Performance Tire	■	■	■	■	V OVER 130 MPH	RBL*
EURO RADIAL T/A The Optimal Blend of Handling, Treadwear, Quality and Style	■	■	■	■	H UP TO 130 MPH	RWL RBL*
RADIAL T/A The New Generation of the Original Race-Winning Street Radial	■	■	■	■	S UP TO 112 MPH	RWL RBL*

GOOD VERY GOOD EXCELLENT

*RWL: Raised White Letters
*RBL: Raised Black Letters

BFGoodrich

Crankshaft Craftsmen Inc.



CRANKSHAFT GRINDING
CAMSHAFT GRINDING
CRANKSHAFT WELDING
POLISHING STRAIGHTENING
HIGH PERFORMANCE WORK
BEARINGS AVAILABLE

QUALITY BEFORE QUANTITY

RUSS TAYLOR - PRESIDENT

(366-0140)

2957 JEROME • EAST OF I-75 • DETROIT

THINK WINK

CARS & TRUCKS



Satisfying Car Buyers For Over 42 Years

BILL WINK CHEVROLET
10700 FORD RD., BET. WYOMING & SCHAEFER
DEARBORN, MICHIGAN



582-5400

"KEEP THAT GREAT GM FEELING WITH GENUINE GM PARTS"



AUTOMETRIC BODY SHOPS

American .. Import



818 N. Main
Royal Oak, MI
398-0200

490 S. Telegraph
Pontiac, MI 48053
332-0600

8645 E. 10 Mile
Centerline, MI
757-7491

24465 Gratiot
East Detroit, MI
774-3455



689-4940

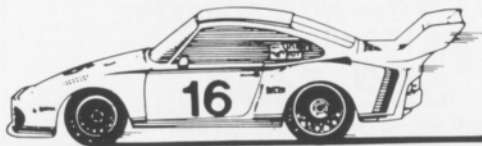
COMPLETE REPAIR SERVICE

PIRELLI & MICHELIN TIRES

OFFICIAL AET TEST
AET TEST FREE WITH
NORMAL MAINTENANCE
SERVICE

- MERCEDES BENZ
- PORSCHE
- VOLKSWAGEN
- AUDI
- B-M-W

1725 E. MAPLE RD (15 MILE) TROY
1 BLOCK EAST OF I-75



FOREIGN AUTOMOTIVE SUPPLY, LTD.



Known for our **LOW, LOW PRICES**
OEM QUALITY PARTS • LARGE INVENTORY • REPAIR MANUALS
HIGH PERFORMANCE LIGHTS • BOSCH • UPS DAILY

Hours to serve you:
Weekdays: 8:30-7:30
Saturdays: 9:00-5:00
SUNDAYS: 11:00-3:00

380 West 11 Mile
Madison Heights
11 Mile I-696
John R.
QUESTIONS? 542-6150



Quartz Euro Code
Lighting by
MARCHALL,
HELLA

Exhaust Systems
by ANSA

Suspension by
KYB,
SUSPENSION
TECHNIQUES,
ADDCO

Racing Equipment
by BELL,
YANKEE

Rollbars, Air Dams,
Sports Car Apparel



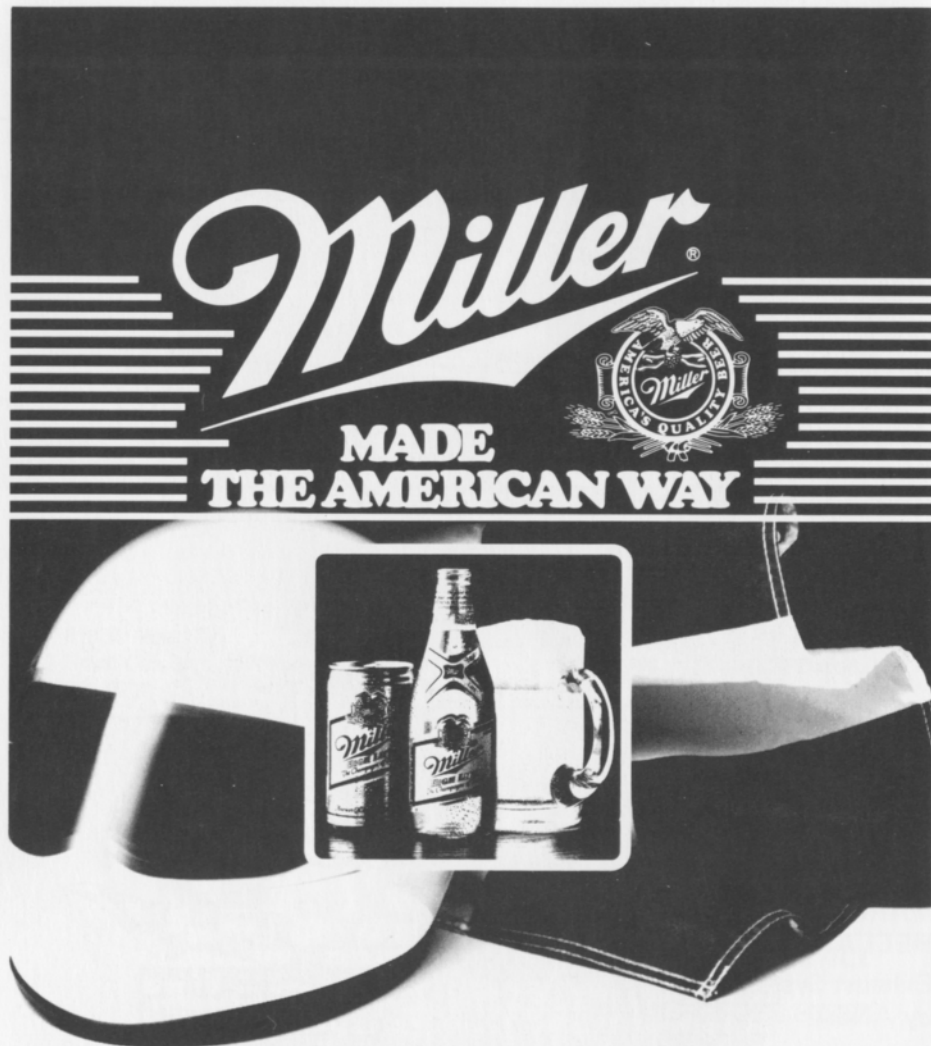
**Accessory
House inc.**

313-548-4488

23257 Woodward

Ferndale mi. 48220

VAST SELECTION OF
IMPORT AUTO ADORNMENTS
WORLD'S FINEST MANUFACTURERS
FOR THE DISCRIMINATING DRIVER



Miller
MADE
THE AMERICAN WAY

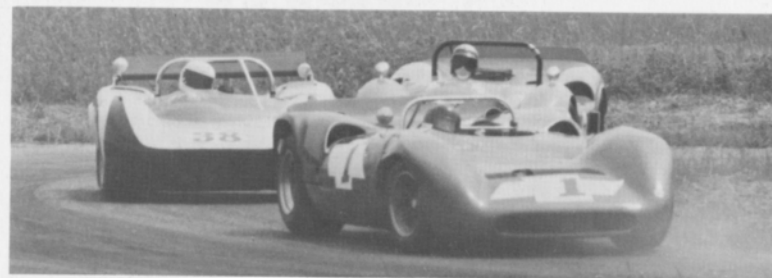
OFFICIAL BEER SPONSOR
WATERFORD HILLS ROAD RACING
POWERS DISTRIBUTING CO., INC.
2000 PONTIAC DRIVE
PONTIAC, MICHIGAN 48053
682-2010

LOOKING back
with Bizer

June 1970



DON ENSLEY'S TVR LEANS HARD IN TURN 2



TOM SWINDELL'S LOLA LEADS TWO MACLARENS THRU TURN 3



WARREN TOPE WAVES TO THE CROWD

**Beck's-ULTRA
HIGH PERFORMANCE**

7000 SCHAEFER ■ DEARBORN ■ MICH. 48126
(313) 846-2600
(800) 482-9381 [Mich. toll free]

TIRES

GOODYEAR

BF Goodrich

YOKOHAMA

PIRELLI

**BF Goodrich
RACE TIRE PROGRAM**

SHOCKS



10% DISCOUNT TO TACA MEMBERS
MAJOR CREDIT CARDS ACCEPTED

WHEELS

BBS

GOTTA

**wed's
TURBO WHEELS**

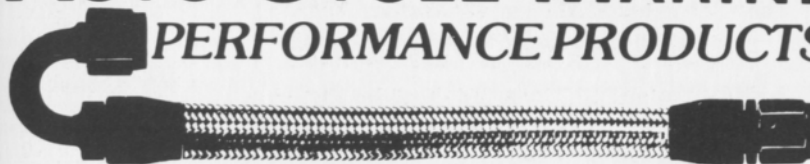
ENKEI

centra CENTRA

**Epsilon
ROAD WHEELS**



**AUTO-CYCLE-MARINE
PERFORMANCE PRODUCTS**



"THE LARGEST INVENTORY IN THE MIDWEST"
HOSE ★ FITTINGS ★ ADAPTERS
(313) 280-1171

Aeroquip
high performance hose and fittings

EARL'S
PERFORMANCE PRODUCTS

4940 Delemere, Royal Oak, MI 48073

Peter Betrus, Jr.

Catalog \$2

Thomas J. Betrus

**Hoosier[®]
RACING TIRES**

JAMALC RACING

(517) 223-8704

**John
Morris**

**Al
Ciaramitaro**

Average Lap Speed

Min/Sec	MPH	Min/Sec	MPH	Min/Sec	MPH
1:00	85.326	1:15	68.261	1:30	56.884
1:01	83.927	1:16	67.363	1:31	56.259
1:02	82.574	1:17	66.488	1:32	55.647
1:03	81.263	1:18	65.635	1:33	55.041
1:04	79.993	1:19	64.805	1:34	54.463
1:05	78.762	1:20	63.995	1:35	53.890
1:06	77.569	1:21	63.204	1:36	53.329
1:07	76.411	1:22	62.434	1:37	52.779
1:08	75.288	1:23	61.681	1:38	52.240
1:09	74.197	1:24	60.947	1:39	51.713
1:10	73.137	1:25	60.230	1:40	51.196
1:11	72.106	1:26	59.530	1:41	50.689
1:12	71.105	1:27	58.846	1:42	50.192
1:13	70.131	1:28	58.176	1:43	49.704
1:14	69.183	1:29	57.523	1:44	49.227

The Waterford Hills Road Course is 1.4221 miles long (7,509 ft. center line of track). To determine the speed of any individual car, time it for one complete lap and read off the speed from this table.

Class Records

ASR	Ed Murray	Chevron	1:10.9	9/81
CSR	Evan MacDonald	M-2	1:10.5	9/78
DSR	Ed Murray	Jeddi	1:12.8	9/85
S/2	Larry Campbell	Lola	1:11.5	9/79
SREN	Dave Finch	SPT Renault	1:21.3	6/84
EP	Lou Livengood	Porsche 356	1:16.3	6/80
FP	Barry Hartzel	MG Midget	1:16.2	7/78
GP	Kirk Carlson	MG Midget	1:17.0	8/81
HP	Paul Cameron	Sprite	1:20.4	7/78
GT1	Don Sak	Corvette	1:13.2	5/86
GT2				
GT3	Craig Allen	Lotus Elan	1:16.4	9/83
GT4	Jerry Morlewski	Fiat 124	1:18.7	9/85
GT5	Ted Wollesen	Mini Cooper	1:19.2	9/85
ITA	Dean Voltmer	Mustang II	1:30.9	5/86
ITB	Ray Krom	Scirocco	1:28.8	9/85
ITC	Dave Vestrand	Fiesta	1:32.6	8/85
ITS	John Heeney	Datsun 280Z	1:26.2	5/86
SSGT	D.J. Fazekas	Porsche Turbo	1:22.7	5/86
SSA	Bill Bayley	Mustang	1:26.2	6/85
SSB	Ron Miller	Honda CRX SI	1:27.0	5/86
SSC	Ray Krom	VW-GTI	1:28.8	5/86
**FA	Andy Falbo	March	1:06.1	8/83
FC	Jay Novak	Novakar	1:09.3	9/84
FF	Vince Muzzin	Royale	1:09.4	6/78
FFR	Mark Davidson	Crossle 32	1:17.0	5/84
F4	Stuart Lamont	Xpit	1:12.5	7/83
FV	Lee McLeod	Lynx	1:15.7	7/81
F440	Jay Novak	Epee	1:14.8	9/85

**track record

Racing Classes

To insure fairness in competition, all road racing cars are grouped into racing classes by the Sports Car Club of America in its General Competition Rulebook (GCR). Waterford Hills Road Racing observes the GCR regulations with some minor exceptions.

The five Competition groups are: Production (sport cars), Showroom Stock (GT cars and sports cars with minimal modification), Sports Racing (Highly modified engine and body over wheels), GT (enclosed cockpit passenger cars and former big production cars), and Formula (open wheels single cockpit). Racing groups are subdivided into classes of equally competitive cars based upon engine size and handling characteristics.

The cars listed below are representative of their racing classes and include most of those you will see at Waterford Hills.

PRODUCTION

EP	Porsche 356 series, MGB, Opel GT, Porsche 914/4, Triumph TR-4
FP	Saab Sonnet, MG Midget Mk III & IV, Lotus 7, Triumph Spitfire Mk III & IV & 1500
GP	MG Midget Mk I & II, Triumph Spitfire Mk I & II, MGA, Austin Healy Sprite, Fiat X1/9, Fiat 124 Spider, Alfa Romeo, Porsche Coupe
HP	Austin Healy Sprite Mk I & II, Fiat 850, MG Midget 948, Fiat Abarth

SHOWROOM STOCK

SS-GT	New class with current model cars of SSA plus additional modifications allowed
SSA	Mustang Cobra, Mazda RX series, Porsche 924, Capri V-6, Datsun 280Z
SSB	Triumph TR-8, Scirocco, Dodge Colt, Datsun 200SX, Fiat 124
SSC	Fiat X1/9, Pinto, VW Rabbit, Renault LeCar, Mustang 2.3, MGB, Honda Civic, Toyota Corolla, Pontiac Astre

SPORTS RACING

ASR	over 1300 cc but less than 6000 cc
CSR	over 850 cc up to 1600 cc (with restrictions)
DSR	below or equal to 850 cc
S/2000	uses Ford 2000 cc overhead cam engines only

GT CLASSES

GT-1	Corvette, Camaro, Ford Cobra II, Shelby GT-350, Porsche 911 SC, Dodge Aspen
GT-2	Datsun Z series, Mazda RX7, Porsche 914/6 & 924 Turbo, Sunbeam Tiger, Triumph TR-6 & TR-8
GT-3	Opel 1900, Datsun 510 1800, Mustang 2300, Pinto 2000 & 2300, Cosworth Vega
GT-4	Fiat 124 Sports Coupe, Pinto 1600, Toyota Celica, Dodge Colt, Toyota Corolla 1600, Renault LeCar, Datsun 510 1600, Ford Escort/Lynx, VW Rabbit & Scirocco
GT-5	Datsun 200SX, Austin/Morris Mini Cooper, VW 1300, NSU TT, Honda Civic, Fiat 124 1200, Toyota Corolla 1200

FORMULA

FF	Formula Ford — Cortina or Pinto 1600 cc engine, strict weight to engine ratio with driver's weight included in total legal weight, very equal class
FFR	Formula Ford Radial — the cars are the same as the above class except they must use BF goodrich T/A radial tires
FV	Formula Vee — all Volkswagen components, 1200 cc engine, driver's weight included in total legal weight, very competitive class
F/ATLC	Formula Atlantic — choice of engines in over 1100 cc up to 16000 cc range, wings and other modifications allowed, not meant to be an inexpensive race car
F/CNTL	Formula Continental — engine up to 1100 cc, rear wings allowed, combines the modifications of the previous Formula C and Formula Super Vee classes
F440	Formula 440 — utilizes Fuji two-cycle snowmobile engines and drive train, rigid suspension, wings permitted
F4	Formula Four — Canadian class, motorcycle engine power plant, engine size determines weight and transmission allowed

Flags

yellow with red stripes



Take care, oil has been spilled or a slippery condition exists somewhere in your vicinity. Look at the track surface.

black



Sloppy or dangerous driving. Complete the lap you are on, stop at the Start/Finish line for consultation with Chief Steward. Waving Black Flag (displayed on all corner stations) means the race is stopped. Slow down immediately and proceed around the track with extreme caution to the pit lane for a re-start.

black with orange ball



(Meatball Black Flag) There is something mechanically wrong with your car. Proceed to your pits at reduced speed.

green



(Or no flag) Course is clear.

yellow



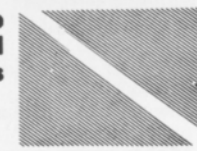
(Stationary) Take care, danger, no passing.
(Waving) Great danger, be prepared to stop, no passing.

red



Waving red (displayed by the Starter only) means the race is stopped, slow down immediately and proceed around the track with extreme caution to the pit lane.

blue with diagonal yellow stripes



(Motionless) Another competitor is following you closely.

checkered

You have finished the race (or practice session). Complete one "cool-off" lap at reduced speed before entering the pits.



Waterford Hills Course Map

a 1.5 mile asphalt road course at waterford, michigan



Waterford Hills 1986 Road Racing Calendar Schedule

Race 1	May 3-4	Race 4	July 26-27
Race 2	May 24-25	Race 5	Aug. 30-31
Race 3	June 28-29	Race 6	Sept. 27-28

Mark your calendar now for the Second Annual Meadowbrook Historic Races to be held August 2 and 3 at Waterford Hills.

The races will not only feature vintage automobiles, there will also be two celebrity races on Saturday sponsored by Volkswagen. One race will feature local media representatives racing identically equipped VWs, the other will feature national media reps. in the same cars. Last year these turned into very competitive matches and it appears they will again this year.

Watch for more details in coming Digests and plan to be there.

Vintage Race Aug. 2-3

RACING RAIN OR SHINE

The hills of Waterford are being invaded... with an army of sports cars, sedans and formula cars in fierce, wheel to wheel competition... and for 1986 we've assembled the largest field in our 28 year history! Watch over 130 top drivers battle it out in the finest racing machinery from America and Europe. Corvette, Porsche, Datsun. Everything from Capris to Camaros, McLarens to MG's. All together, fighting it out on a mile-and-a-half track with 13 right and left turns that twist up and down hills like no other road course in the U.S.A.

EASY ON THE WALLET

Admission is just \$3.00 for Saturday, \$5.00 for Sunday, or \$6.00 for the entire weekend. Children under 12 are always free and a Season Ticket is only \$20.00. The track opens at 10 a.m. for practice and qualifying. Racing begins at 1:30 p.m. on Saturday (seven races) and at 11:30 a.m. on Sunday (ten races). For more information phone (313) 623-0444.

EASY TO GET TO

Chances are you live within a few minutes of the Midwest's premier road course. The W.H.R.R.I. Race Track is located just 6 miles north of Pontiac on Waterford Road, 1/4 mile each of Dixie Highway (U.S. 10) in Waterford, Michigan. The easiest route to take is I-75 to the southbound Sashabaw Exit. Take Sashabaw south to Pelton Road, then take Pelton west to Waterford Road. The total distance after exiting the expressway is 2-1/2 miles.

New, Used reproduction Parts and Accessories
Custom Paint and Body Repair

BOJAX

HiTech Automotive

design and fabrication

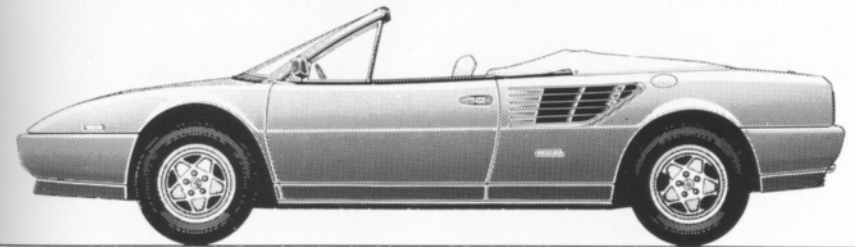
DOUG FEHAN
BOB FEHAN
313/549-5410

4712 Fernlee
1st Block East of Coolidge, S. of 14
Royal Oak, Michigan 48073

Now...3.2 Mondial Cabriolet

A Ferrari is an investment: in pride, in excellence, in achievement. Protect your investment by purchasing and maintaining your Ferrari through your authorized dealer. Only your authorized Ferrari dealer can provide full factory warranty, service and parts.

Ferrari 



The Sports Car Exchange

MICHIGAN'S EXCLUSIVE AUTHORIZED AGENT FOR
FERRARI
14510 MICHIGAN AVE. DEARBORN, MICHIGAN 313-581-6222