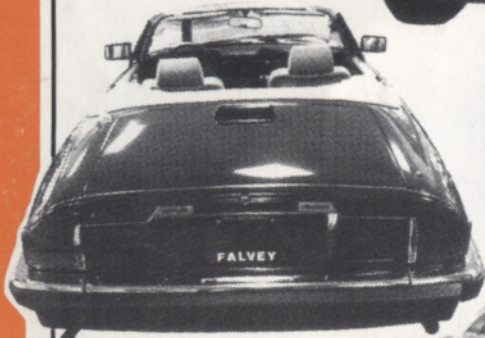
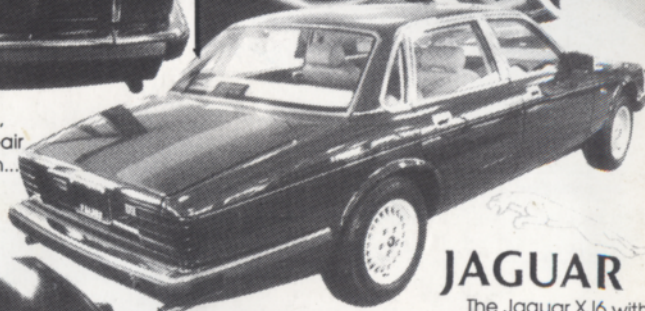
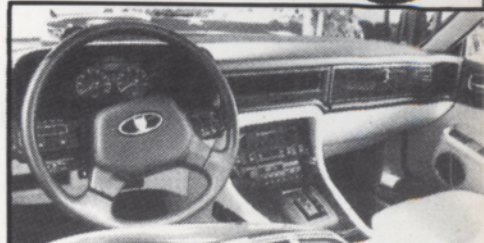


Choose  
From  
The  
Best...



The Jaguar XJ-S Convertible,  
enjoy the epitome of open-air  
English motoring once again...

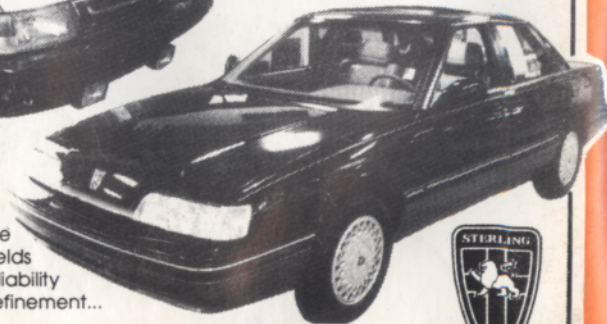


**JAGUAR**

The Jaguar XJ6 with  
Falvey installed European  
style headlights; the luxurious interior;  
and the graceful rear quarter view...



The Saab 9000 Turbo,  
speed, comfort, style, safety...



The Sterling, the  
ultimate combination yields  
the highest level of reliability  
and refinement...

**FALVEY**

TROY MOTOR MALL (313) 643-6900  
1815 Maplelawn, Troy, MI

# WATERFORD HILLS

## ROAD RACING

oakland county  
sportsmen's club



# 1988

# WATERFORD DIGEST

AUGUST  
\$2.00

PACE CAR FURNISHED BY

# PAGE TOYOTA



8½ & TELEGRAPH  
SOUTHFIELD, MICH.

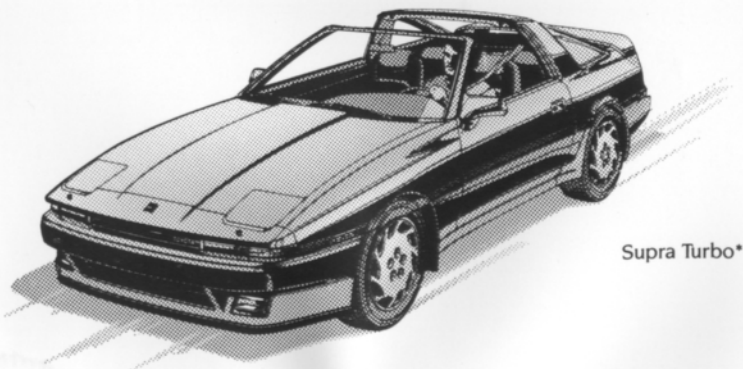
## 352-8580

MICHIGAN'S #1 TOYOTA DEALER  
IN SALES, SERVICE AND BODY REPAIR



WINNER OF THE NATIONAL SERVICE AND  
CUSTOMER RELATIONS AWARD FOR 7 YEARS

FINE SELECTION OF USED IMPORT  
& DOMESTIC ECONOMY CARS



Supra Turbo\*

### THE PRIX-RACE FAVORITE — THE TOYOTA CELICA SUPRA.



DON CASTLE

## Contents



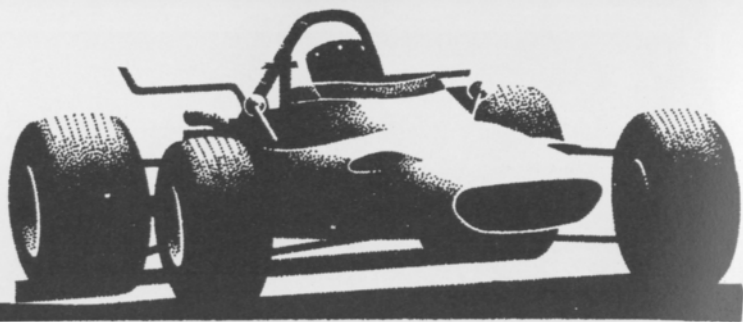
- 2. The Inside Line
- 3. Officials
- 10. Historic Races
- 18. Class Race Winners
- 29. Looking Back With Bizer
- 32. Average Lap Speed Chart
- 32. Class Records
- 33. Racing Classes
- 34. Flags
- 35. Course Map
- 36. Racing Schedule

## Staff

Editor: DAN HILL  
Design and Production: TAURUS ADVERTISING  
Photographers: AL BIZER  
DON CASTLE

Cover Photo by AL BIZER

# WATERFORD DIGEST



## The Inside Line

Is it August already? Boy, I guess it is! Well, WELCOME to Waterford Hills Road Racing. And a special welcome to the folks from Uniroyal-Goodrich celebrating their annual motorsports weekend. The presence of staff and clients as well as the big BFG Semi, are signs of their continued involvement in racing at the grass-roots level.

The BFG and Team T/A logos on Showman Stock and Improved Touring cars signify additional support through a newly-instituted contingency plan here at Waterford. Drives on BFG tires in these classes now compete for free tire awards each weekend and for cash awards at the end of the season. Thanks folks! We're glad you're here.

We're now past the mid-point of our season, conducted as you know in the hottest weather in umpteeneven years. We started out with a newly-paved track which, under the pressure of a heavy schedule and extreme heat had started to come apart in a major way by mid- July. Repairs, including FIA style curbs in many of the corners were completed in time for a late July meet and for the Meadow Brook Vintage races. Some post-repair break-up has occurred and reports from tracks around the country suggest that this is a fairly common problem. For the moment it appears that tire development is seriously pushing the performance envelope of paring technology.

So what do we do? We RACE, that's what! And the current standings for top ten driver recognition reflect the competitive spirit of our membership!

Multiple ties and several 1-point differences in the rankings point to an intense final two-thirds of our racing season. Class championships are also being hotly contested, particularly in CFF, FA, GT4 and SSA where less than 10 points separate first from second place. In FP there is a tie for first and in ITC twelve points separate the top three competitors. SO!

# WATERFORD DIGEST

Position	Driver	Class	Car	Points
1	Ted Wollesen	GT5	Mini Cooper	99
	Mike Meimar	SSB	Dodge Charger	99
	Mike St. Louis	SSGT	Corvette	99
4	Joe O'Conner	S 2000	Lola	97
5	Lew Cooper III	FF	VanDieman	91
6	Don Gibboney	F440	Novakar	90
7	Steve Ives	Sport Renault		82
8	Don Kitch	CFF	Crossle	78
9	Gary Humphries	GT3	Porsche	77
10	Mike Neal	Sport Renault		76
11	Terry Abbott	FV	Zink	72
12	Cal Cortright	ITC	Fiesta	69
13	Mark James	CFF	Lola	68
14	Vwe Sehling	FV	Caracal	67
15	Ray Krom	SSC	VW GTI	66
16	Gregg Palombo	CSR	Merlyn	65
17	Marc Kopec	GT1	Camaro	64
18	Jerry Morlewski Jr.	ITC	Dodge Colt	63
19	Mike Jones	ITB	Mustang	54
	Greg Mankin	ITA	Mazda	54
	Hugo Carlson	GP	MG-Midjet	54

There will be racing. And guess what? You get to see it happen! The grass is green again and there's plenty going on. Lean back and enjoy. We hope you'll return for our season finale September 24 and 25.

Cal Cortright

## Officials

President	Don Burry
Secretary	Peter Quenet
Vice President	Ted Wollesen
Director of Racing	Jerry Morlewski
Race Coordinator	Jim Vollmers
Chief Steward	Barb Kitch
Asst Chief	Eddie Atkinson
Chief of Flags & Communications	Bill Gibbs
Chief Registrar	Carol Humphreys
Chief of Safety	Blackie Meyers
Chief of Timing & Scoring	Erin & Elise Wollesen
Chief Starter	Hal Goff
Chief of Tech	Dave Gernaey
Stewards of the Meet	Dan O'Connor Hugo Carlson Joe Prato Mark Davidson Gary Ray
Licensing Chairman	Ray Krom
Membership Chairman	Diane Wollesen
Trophy Chairman	Cynthia Kempton
Grid Marshall	Emily Whitehead
Paddock Marshall	Paul St. Pierre
Course Control	Blackie Meyers
Sound Control	Roger Roeske
Director of Facilities	Dave Hinman
Controller	Dan McDonald
Newsletter Editor	Cindy Anthony
Boutique	Ruth Olsen

## THE BMW M3. IT TRANSFORMS AN ENTHUSIAST INTO A FANATIC IN 7.6 SECONDS FLAT.



The new M3 stretches the definition of "street legal" to its outermost limits. It is a bona fide supercar.

Within its taut, aerodynamic skin pulses the pride of BMW's Motorsport racing division. A 192-hp, twin-cam, 16-valve, 4-cylinder street-tuned version of BMW's world champion Formula 1 powerplant. It turns 0-60 in 7.6 seconds, and 143 mph flat out.\*

Even more impressive is its performance in everyday traffic.

Sport gearbox and steering and competition suspension keep you confidently in charge. While leather sport seats keep you comfortably ensconced.

Race in for a test drive. The M3 is no ordinary everyday car. But it could convert you into an everyday fanatic.



**THE ULTIMATE DRIVING MACHINE.™**

© 1987 BMW of North America, Inc. The BMW trademark and logo are registered \*BMW does not condone exceeding posted speed limits

## ERHARD BMW

Michigan's Oldest and Largest BMW Dealer  
24130 Telegraph Rd. at 9½ Mile, Southfield

352-6030

Open Mon. & Thurs.  
Until 9 P.M.

OPEN SATURDAYS

NEXT DAY DELIVERY

**S-S IMPORTED CAR PARTS, INC.**

- ★ BOSCH ELECTRICAL
- ★ HAYNES REPAIR MANUALS
- ★ WEBER CARBURETION
- ★ BODY PARTS
- ★ CAR COVERS & MASKS

- ★ KYB SHOCKS
- ★ CIBIE LIGHTS
- ★ ANSA EXHAUSTS
- ★ COMPLETE ENGINES
- ★ CASTROL OIL PRODUCTS
- ★ REMANUFACTURED ENGINES

**IMPORTED CAR PARTS & ACCESSORIES FOR ALL IMPORTED CARS**

"IMPORTED CARS ARE NOT FOREIGN TO US"

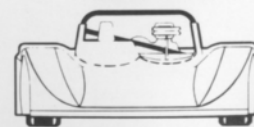
**8 LOCATIONS TO SERVE YOU**

<b>FARMINGTON HILLS</b> 477-0410 32214 W. 8 MILE ANN ARBORS 769-4900 1948 W. STADIUM	<b>WARREN</b> 759-0800 13456 E. 11 MILE NEW LOCATION ALLEN PARK 383-2500 15550 SOUTHFIELD RD.	<b>BERKLEY</b> 546-6010 3860 W. 12 MILE <b>BLOOMFIELD HILLS</b> 334-6700 1717 S. TELEGRAPH
---	---	---

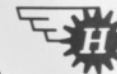
SERVING THE AREA FOR OVER 15 YEARS

AUTHORIZED DISTRIBUTOR

- BELL ..... helmets, racemark suits
- CARTEL.....brake fluid
- FERODO ...brake pads
- FILTRON ... air filters & kits
- FIRESTONE...race tires
- GIRLING-LOCKHEED... master & slave cyl.
- HYLOMAR . sealants
- INDY CAR MIRRORS ... formula & sports-2
- JONES..... tachometers
- KONI ..... shocks
- LIFELINE... fire systems
- LUKE ..... safety harness



**LOLA**



• CARS  
• PARTS  
• SERVICE

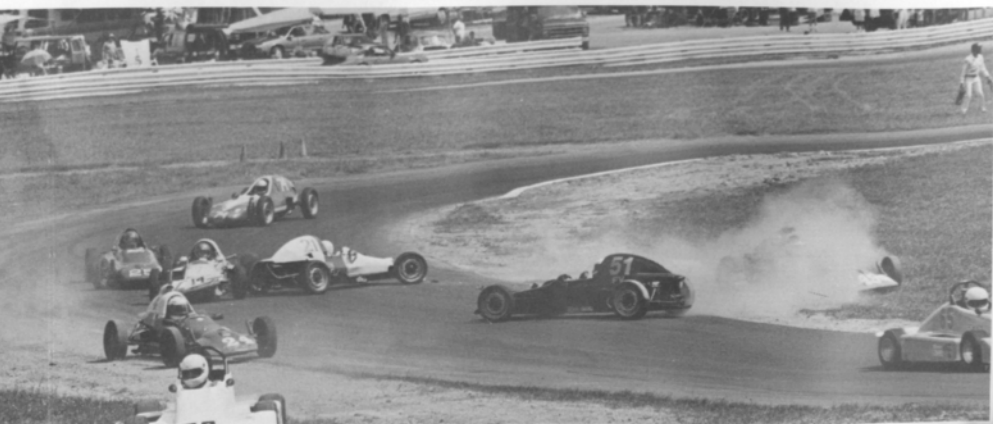
**Averill Racing Stuff**

**HAZEL PARK, MI  
(313) 542-9366**

- MERIT ..... master switch
- MOMO ..... steering wheels
- NMB ..... rod ends & bearings
- PANASPORT..one & three piece wheels
- PIT BOARDS . tools, tape, pyrometers
- PULSAR.....racing battery
- QUARTER MASTER ... clutch disc assy.
- REDLINE.... oil & cv grease
- SIMPSON... suits & equip.
- SMITH..... gauges
- 1600 FORD PARTS... gaskets, rings, bearings
- CHASSIS REPAIRS - ALIGNMENT, fabrication, welding

# WATERFORD DIGEST

PHOTOS BY AL BIZER

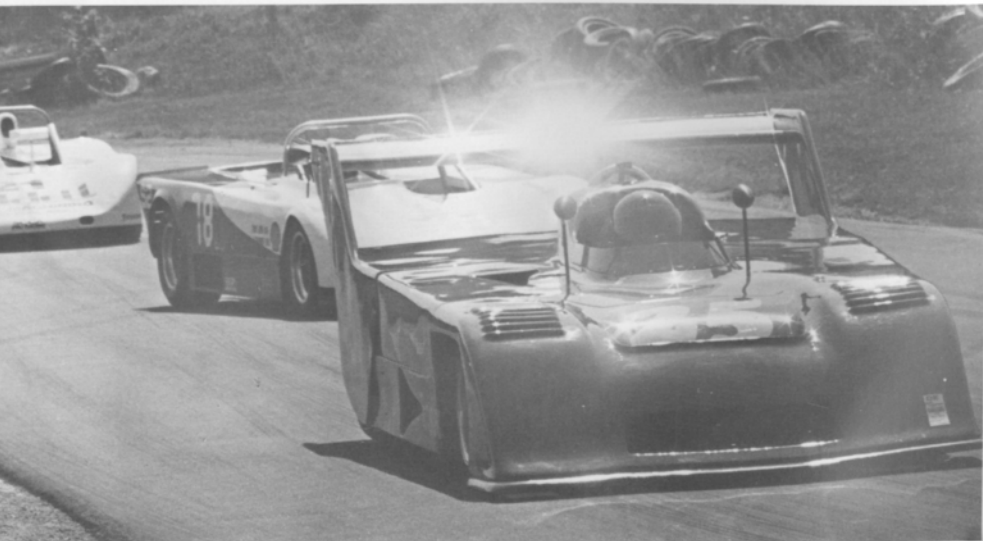


# WATERFORD DIGEST

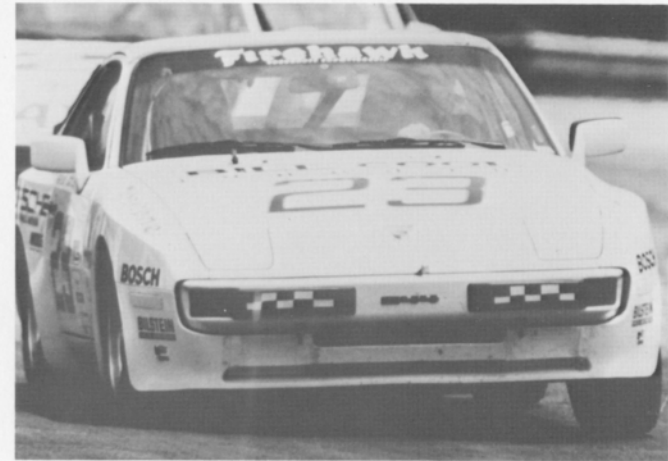
AL BIZER



PHOTOS BY AL BIZER



## OUR CARS PERFORM. AND SO DO WE.



Peter Cook, our general manager, certainly performs. He and co-driver Terry Abbott, our service shop foreman, compete in the grueling showroom stock endurance races both with I.M.S.A. and S.C.C.A. Six to 24 hours of non stop racing in Bill Cook's Porsche 944.

Ed Geiser, our service and racing director, performs too. With a team of factory-trained master technicians dedicated to maintaining your Porsche or Audi as long as you own it. Our master technicians receive the best training both with the factory and at the race track. Our award winning parts team, led by Steve Shepherd, performs to make sure that the parts you need are here when you need them.

At Bill Cook Imported Cars, we know our cars perform, and we expect the same of ourselves.



"NOBODY EVEN COMES CLOSE"



**BILL COOK**  
IMPORTED CARS, INC.

37901 GRAND RIVER AVE.  
FARMINGTON HILLS, MI 48024

**471-0044**

*Sales & Leasing*

# WATERFORD DIGEST

PHOTOS BY AL BIZER

PHOTOS BY DON CASTLE

## MEADOW BROOK IV HIGHLIGHTS

pages 10-15

HISTORIC RACES

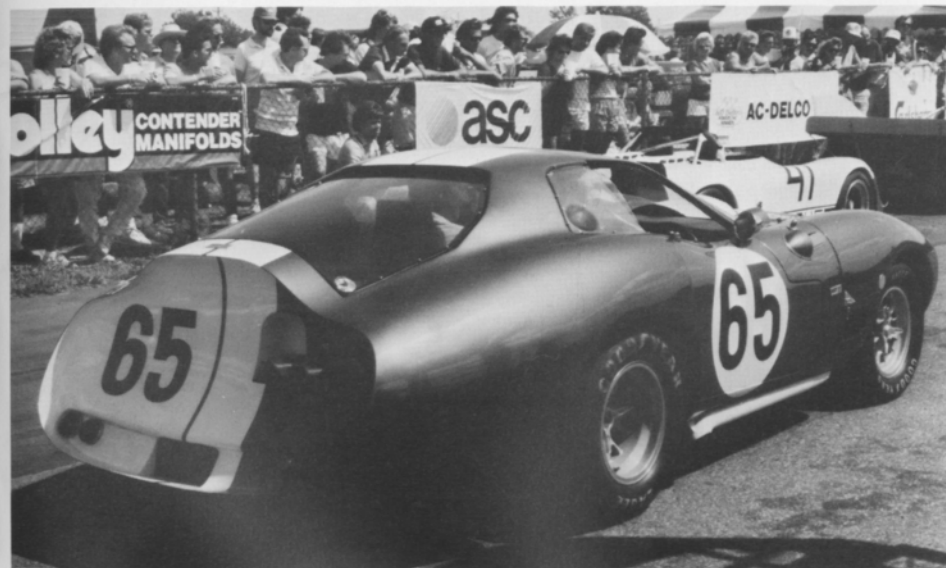
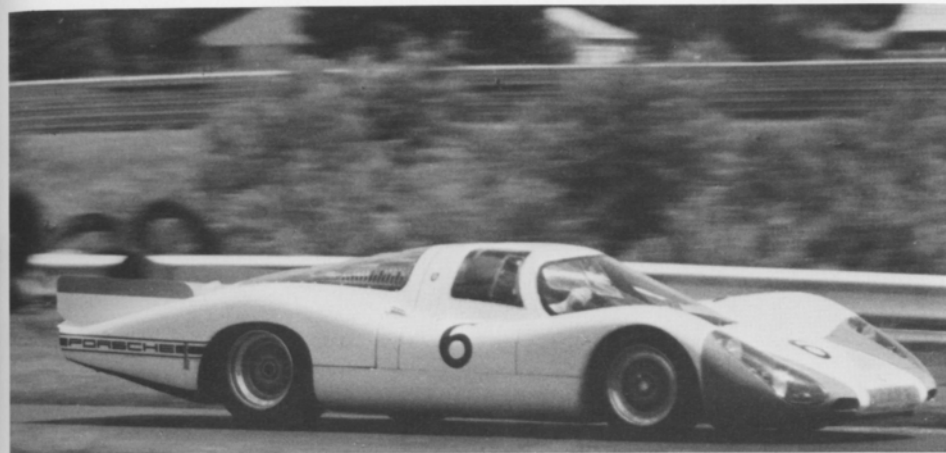


AL BIZER



# WATERFORD DIGEST

PHOTOS BY AL BIZER



### CADILLAC OVERALL SUPPLY CO.

RENTAL UNIFORMS - SHOP TOWELS  
DUST CONTROL - ENTRANCE MATS

PHONE (313) 366-7700

TONY KUNERT  
SALES REPRESENTATIVE

6401 E. DAVISON  
DETROIT, MICH.

WILLIAM A. KIEFER  
President

SCOTT W. KIEFER  
Vice-President

*Micro Gauge, Inc.*

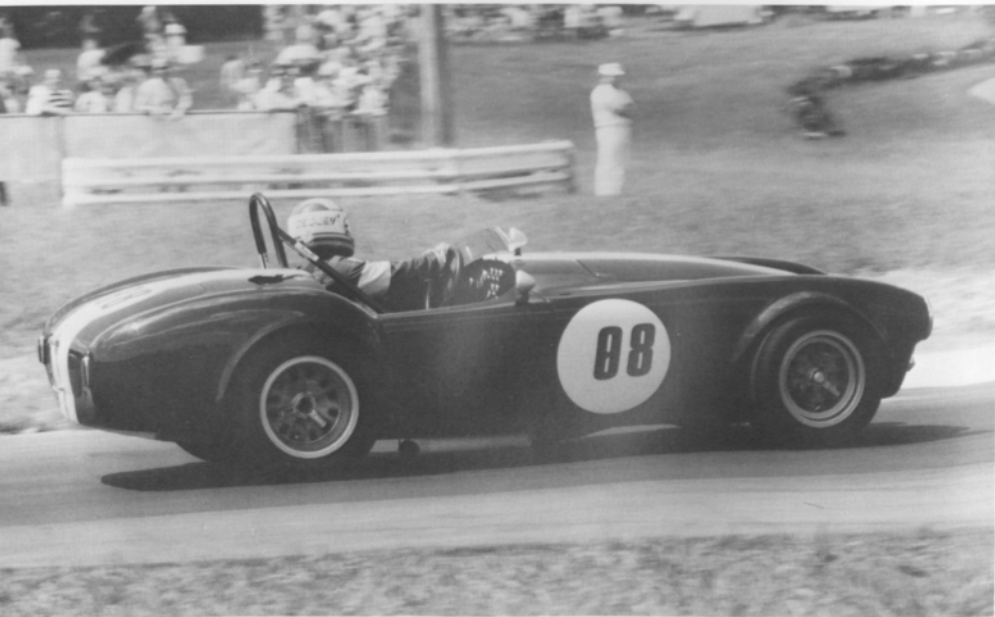
CNC Machining  
O.D. Grinding  
Precision Honing

(517) 546-7036

5910 E. Grand River  
Howell, MI 48843

# WATERFORD DIGEST

AL BIZER



# WATERFORD DIGEST

# BILL COOK mazda

37911 Grand River at 10 Mile Rd.  
Farmington Hills, MI 471-0800



# BILL COOK mazda

*"Where Excellence is the Standard, Not the Option"*





AL BIZER

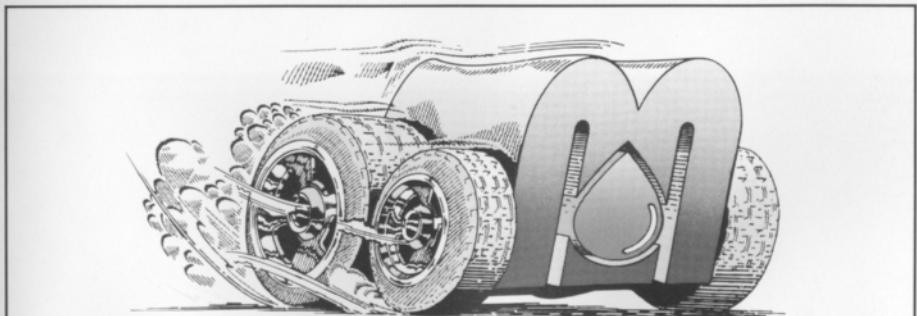


DON CASTLE



AL BIZER

DON CASTLE



## See you in the winner's circle!

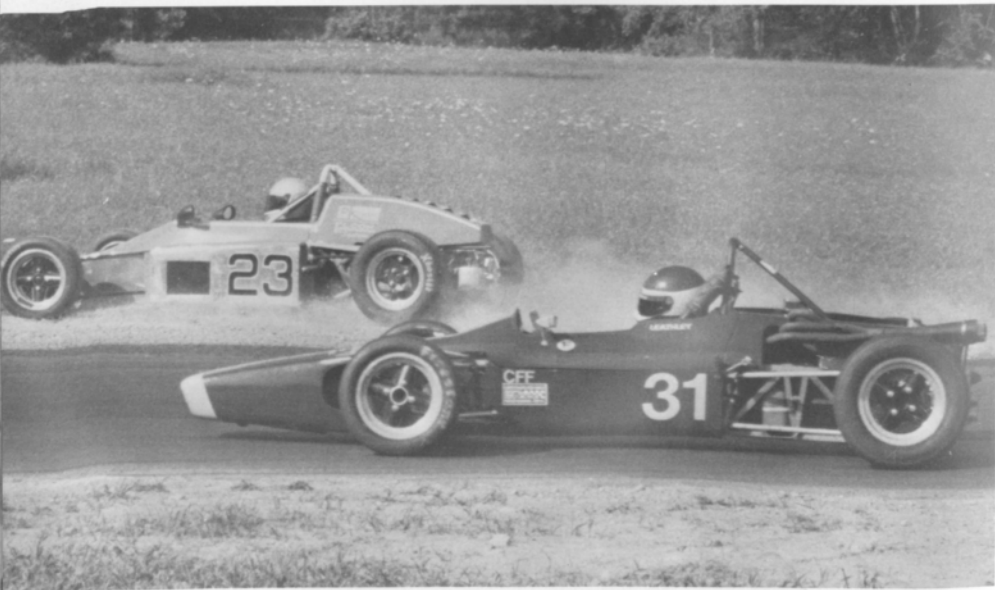
Give your car the competitive edge, with Mid-States Petroleum, the official supplier of Union 76 racing gasoline at Waterford Hills. We also carry CAM-2 and Howell racing gasolines, racing methanol, motor oils, and lubricants, that will have you leading the pack. Call Mid-States today and get the edge!



Mid-States Petroleum, Inc.  
P.O. Box 186 • Troy, Michigan 48099  
In Michigan, call 1-800-482-2611  
For rest of USA, call 1-800-554-0500

# WATERFORD DIGEST

PHOTOS BY DON CASTLE



# WATERFORD DIGEST

DON CASTLE



AL BIZER



# WATERFORD DIGEST

## SATURDAY CLASS RACES JULY 30-31, 1988 CLASS WINNERS

CLASS	DRIVER	CAR	BEST LAP
<b>RACE #1</b>			
FV	LARRY BRADLEY	BRADLYNX-INDIGO	1:17.46
F440	DON GIBBONEY	NOVAKAR J-WHITE	1:17.14
SREN	MICHAEL NEAL	SP RENAULT-RD/WH/BL	1:20.76
<b>RACE #2</b>			
ITS	DION JOHNSTON	DATSUN 280Z-BROWN	1:26.86
ITB	MICHAEL JONES	MUSTANG-WH/BLU	1:25.81
ITC	CAL CORTRIGHT	FORD FIESTA-ORANGE	1:27.67
SSX	JOHN VICKERMAN	MAZDA GLC-BURGUNDY	1:33.31
SSGT	MICHEAL ST. LOUIS	CORVETTE-WHITE	1:24.18
SSA	PATRICK ST LOUIS	FIREBIRD-WHITE	1:27.72
SSB	MIKE MEIMAR	CHARGER-SIL/BLU	1:27.28
SSC	RAY KROM	VW GTI-SILVER	1:27.24
<b>RACE #3</b>			
CSR	CRAIG BENNETT	RALT	1:11.78
S2	JOE O'CONNOR	LOLA-WHITE	1:16.23
FP	DAN HANLEY JR.	SPRITE-PURP/RED	1:28.17
GP	HUGO CARLSON	MIDGET-ORANGE	1:23.17
GT5	TED WOLLESEN	MINI-YELLOW	1:20.90
<b>RACE #4</b>			
GTX	PETE MORGAN	CORVETTE-BLACK	1:20.81
GT1	DOUG BUIST	FIERO-WH/SIL	1:15.96
GT3	PAUL YOUNG	PINTO-BLUE	1:19.28
GT4	JERRY MORLEWSKI	FIAT 124-RED	1:20.41
<b>RACE #5</b>			
FA	ANDY FALBO	MARCH	1:08.72
FC	BILL PATRICK	REYNARD-WHITE	1:13.86
FF	JAMES TERMOTE	LOLA-WHITE	1:14.90
CFF	DON KITCH	CROSSLE 32F-RED/YEL	1:14.41
F4	DENNIS WHITEHEAD	VIXON-RED/WH/BLUE	1:19.16

## SUNDAY CLASS RACES JULY 30-31, 1988 CLASS WINNERS

CLASS	DRIVER	CAR	BEST LAP
<b>RACE #1</b>			
FV	TERRY ABBOTT	ZINK-RED/WHITE	1:17.18
F440	DON GIBBONEY	NOVAKAR J-WHITE	1:17.16
SREN	MICHAEL NEAL	SP RENAULT-RD/WH/BL	1:20.19
<b>RACE #2</b>			
ITS	DION JOHNSTON	DATSUN 280Z-BROWN	1:25.24
ITB	MICHAEL JONES	MUSTANG-WH/BLU	1:26.08

# WATERFORD DIGEST

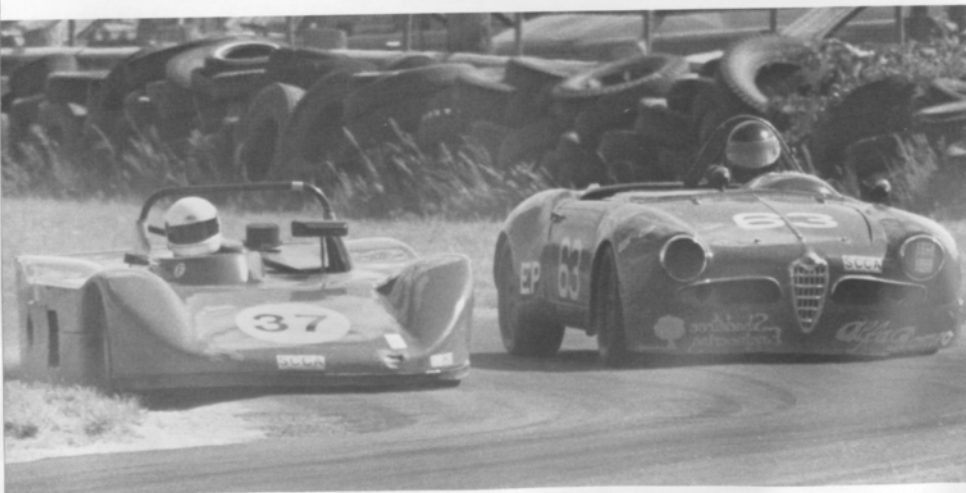
CLASS	DRIVER	CAR	BEST LAP
<b>RACE #2</b>			
ITC	CAL CORTRIGHT	FORD FIESTA-ORANGE	1:29.07
SSX	JOHN VICKERMAN	MAZDA GLC-BURGUNDY	1:32.29
SSGT	MICHEAL ST. LOUIS	CORVETTE-WHITE	1:23.31
SSA	PATRICK ST LOUIS	FIREBIRD-WHITE	1:27.87
SSB	MIKE MEIMAR	CHARGER-SIL/BLU	1:26.63
SSC	RAY KROM	VW GTI-SILVER	1:26.59
<b>RACE #3</b>			
CSR	CRAIG BENNETT	RALT	1:09.95
S2	RON GRIFFIN	LOLA-RED/WH	1:14.35
FP	DAN HANLEY JR.	SPRITE-PURP/RED	1:26.47
GP	HUGO CARLSON	MIDGET-ORANGE	1:23.33
GT5	ALEX SZILAGYI	HONDA CIVIC-YELLOW	1:26.56
<b>RACE #4</b>			
GTX	THOMAS WALLACE	CAMARO-WH/RED	1:18.30
GT1	DOUG BUIST	FIERO-WH/SIL	1:16.34
GT3	PAUL YOUNG	PINTO-BLUE	1:20.01
<b>RACE #5</b>			
FA	ANDY FALBO	MARCH	1:11.66
FC	BILL PATRICK	REYNARD-WHITE	1:16.23
FF	LEW COOPER III	VAN DIEMAN-BLK	1:17.92
CFF	MARK JAMES	LOLA-RED	1:15.30
F4	ROBERT LONG	XPIT-ORANGE	1:21.30

## FEATURE RACES JULY 30-31, 1988 TOP FIVE FINISHERS

CLASS	DRIVER	CAR	BEST LAP
<b>FEATURE #1</b>			
SREN	GARY RIDDELL	SP RENAULT-WHITE	1:21.77
SREN	STEVE IVES	SP RENAULT-GRN/YEL	1:22.09
SREN	JOHN LAMBRECHT	SP RENAULT-BLU/SIL	1:22.59
SREN	MICHAEL NEAL	SP RENAULT-RD/WH/BL	1:22.54
SREN	DAN HANLEY	SP RENAULT-WH/ORN	1:23.99
<b>FEATURE #2</b>			
GT5	TED WOLLESEN	MINI-YELLOW	1:22.77
SSGT	MICHEAL ST. LOUIS	CORVETTE-WHITE	1:23.91
ITS	DION JOHNSTON	DATSUN 280Z-BROWN	1:25.97
SSGT	ROGER MIKULAS	FIREBIRD-WHITE	1:25.82
GP	HUGO CARLSON	MIDGET-ORANGE	1:25.52
<b>FEATURE #3</b>			
CSR	CRAIG BENNETT	RALT	1:13.77
S2	JOE O'CONNOR	LOLA-WHITE	1:15.42
S2	GERALD SHOHAN	LOLA 596-WHITE	1:18.73
GT1	MARK KOPEC	CAMARO-RED	1:19.99
GT4	JERRY MORLEWSKI	FIAT 124-RED	1:20.50
<b>FEATURE #4</b>			
FA	ARMEN MEGREGIAN	LOLA-RED	1:13.14
CFF	MARK JAMES	LOLA-RED	1:13.34
FF	LEW COOPER III	VAN DIEMAN-BLK	1:13.89
FF	MARK DAVISON	SWIFT-RED	1:14.56
CFF	DON KITCH	CROSSLE 32F-RED/YEL	1:15.30

# WATERFORD DIGEST

PHOTOS BY DON CASTLE



# WATERFORD DIGEST

KAMEI • BOGE • LOBRO • LEISTRITZ • BILSTEIN • HELLA • BOSCH • RONAL



## IMPORT SERVICE & PARTS

**DRIVING SHOULD BE FUN!**

So you love hot cars? We do too. We're Motorheads. We sell Bilstein, Hella, Neuspeed, BBS, Ronal; if it makes the car more fun to drive, we're into it. We also offer expert service and installation.

Munk's wants to be your source for the best in performance at fair prices. Call us, or stop by, and we'll show you just how much fun driving can be.

*Dedicated to doing it right for over 15 years!*

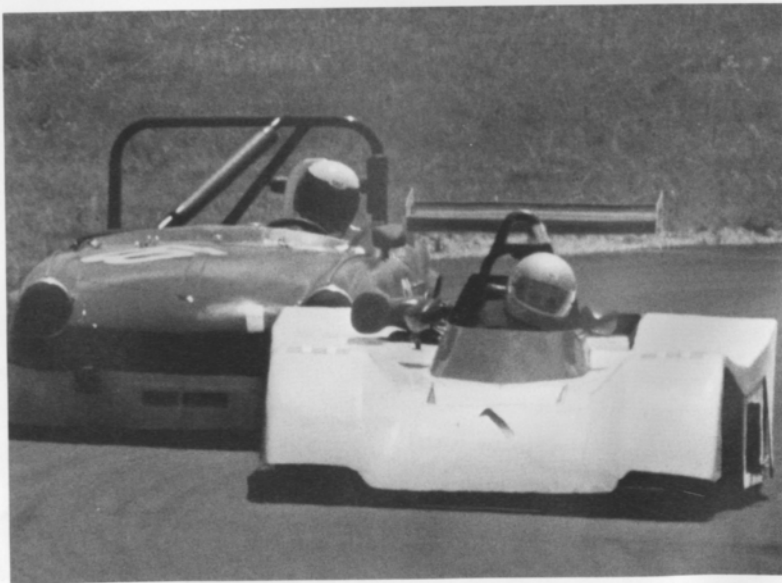
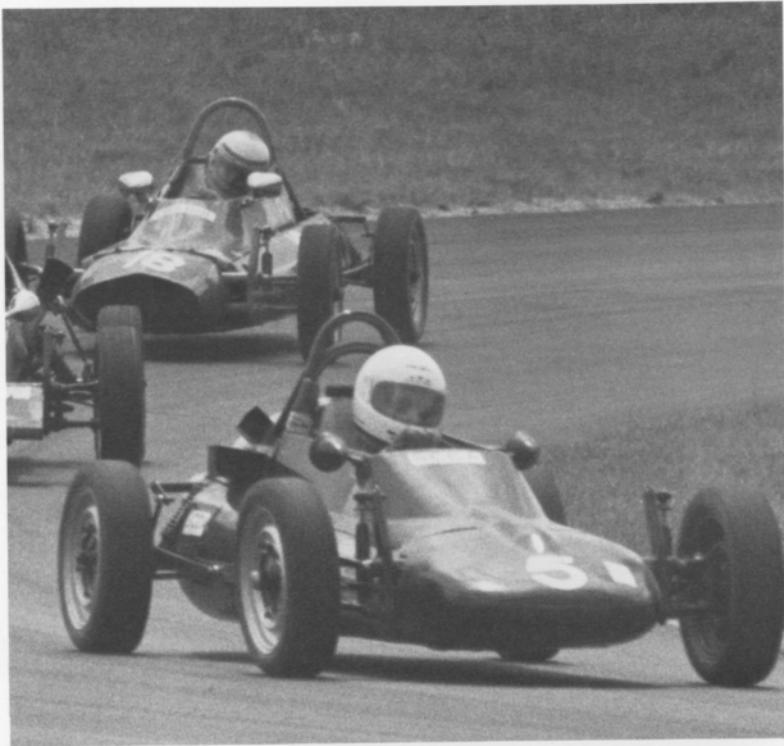
3080 W. Huron (M-59)  
Waterford Township  
**681-8081**  
1803 Orchard Lake Rd.  
Bloomfield Township  
**335-5424**

BOGE • LOBRO • LEISTRITZ • BILSTEIN • HELLA • BOSCH • RONAL



# WATERFORD DIGEST

PHOTOS BY DON CASTLE



# WATERFORD DIGEST

PHOTOS BY DON CASTLE

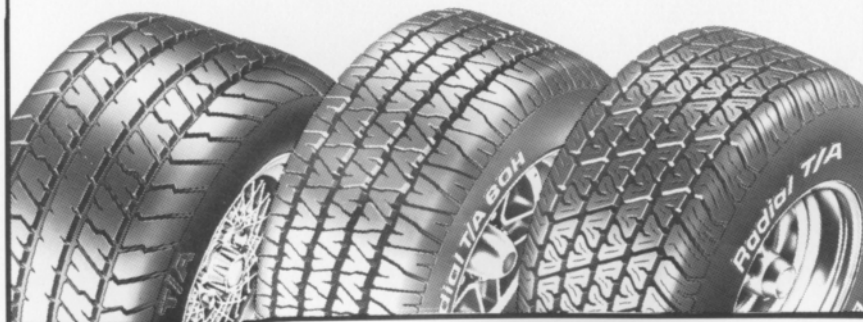


## BFGOODRICH T/A RADIALS TAKE ON THE ROAD™

**COMP T/A**  
The Ultimate  
High-Performance Tire

**EURO  
RADIAL T/A**  
The Optimal Blend of Handling,  
Treadwear, Quality and Style

**RADIAL T/A**  
The New Generation of  
the Original Race-Winning  
Street Radial



### CHOOSE THE RIGHT T/A RADIAL

	HANDLING	WET & DRY TRACTION	TREADWEAR	RIDE	SPEED RATING	SIDEWALL
<b>COMP T/A</b> The Ultimate High-Performance Tire	EXCELLENT	EXCELLENT	GOOD	VERY GOOD	<b>V</b> OVER 130 MPH	<b>RBL*</b>
<b>EURO RADIAL T/A</b> The Optimal Blend of Handling, Treadwear, Quality and Style	EXCELLENT	EXCELLENT	EXCELLENT	VERY GOOD	<b>H</b> UP TO 130 MPH	<b>RWL</b> <b>RBL*</b>
<b>RADIAL T/A</b> The New Generation of the Original Race-Winning Street Radial	EXCELLENT	EXCELLENT	EXCELLENT	EXCELLENT	<b>S</b> UP TO 112 MPH	<b>RWL</b> <b>RBL*</b>

GOOD VERY GOOD EXCELLENT \*RWL: Raised White Letters  
RBL: Raised Black Letters

**BFGoodrich**

## Crankshaft Craftsmen Inc.



CRANKSHAFT GRINDING  
CAMSHAFT GRINDING  
CRANKSHAFT WELDING  
POLISHING STRAIGHTENING  
HIGH PERFORMANCE WORK  
BEARINGS AVAILABLE

QUALITY BEFORE QUANTITY

RUSS TAYLOR - PRESIDENT

**(366-0140)**

2957 JEROME • EAST OF I-75 • DETROIT

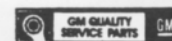
# THINK WINK

**CARS &  
TRUCKS**



Satisfying Car Buyers For Over 42 Years

**BILL WINK CHEVROLET**  
10700 FORD RD., BET. WYOMING & SCHAEFER  
DEARBORN, MICHIGAN



**582-5400**

"KEEP THAT GREAT GM FEELING WITH GENUINE GM PARTS"



## AUTOMETRIC BODY SHOPS

American .. Import



818 N. Main  
Royal Oak, MI  
398-0200

490 S. Telegraph  
Pontiac, MI 48053  
332-0600

8645 E. 10 Mile  
Centerline, MI  
757-7491

24465 Gratiot  
East Detroit, MI  
774-3455



689-4940

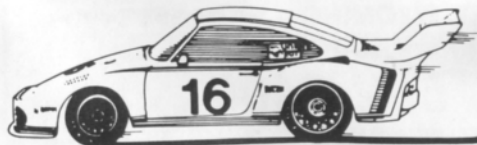
COMPLETE REPAIR SERVICE

PIRELLI & MICHELIN TIRES

OFFICIAL AET TEST  
AET TEST FREE WITH  
NORMAL MAINTENANCE  
SERVICE

- MERCEDES BENZ
- PORSCHE
- VOLKSWAGEN
- AUDI
- B-M-W

1725 E. MAPLE RD (15 MILE) TROY  
1 BLOCK EAST OF I-75



## FOREIGN AUTOMOTIVE SUPPLY, LTD.



Known for our **LOW, LOW PRICES**

OEM QUALITY PARTS • LARGE INVENTORY • REPAIR MANUALS  
HIGH PERFORMANCE LIGHTS • BOSCH • UPS DAILY

Hours to serve you:  
Weekdays: 8:30-7:30  
Saturdays: 9:00-5:00  
SUNDAYS: 11:00-3:00

I-75

380 West 11 Mile  
Madison Heights

11 Mile

I-696

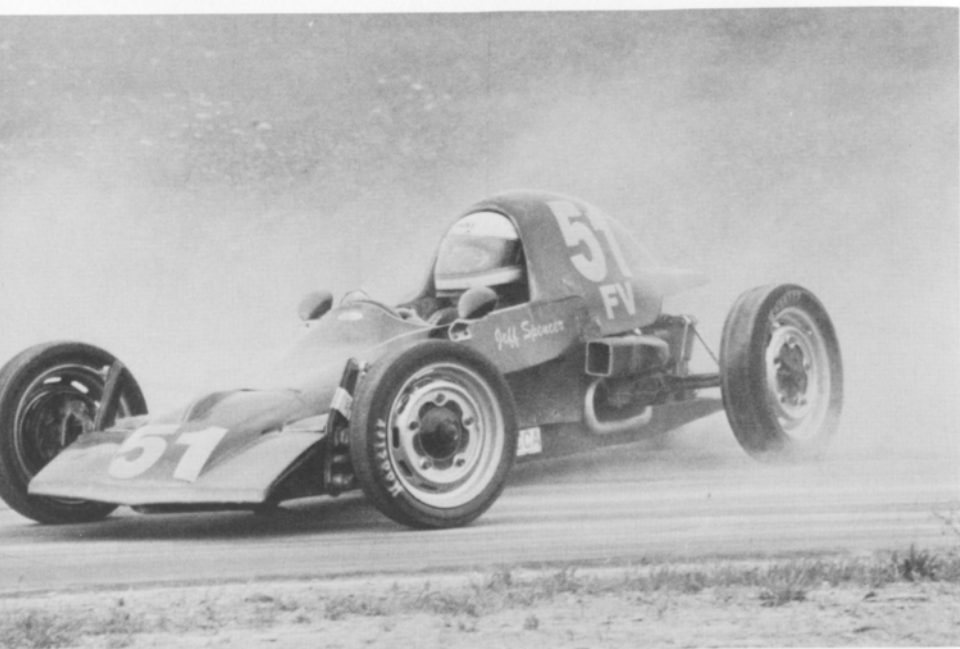
John R.

QUESTIONS? 542-6150



# WATERFORD DIGEST

PHOTOS BY DON CASTLE



# WATERFORD DIGEST

LOOKING back

with Bizer July 27, 1963



WE STAND AS WE LISTEN TO THE NATIONAL ANTHEM



## Beck's-ULTRA HIGH PERFORMANCE

7000 SCHAEFER ■ DEARBORN ■ MICH. 48126  
(313) 846-2600  
(800) 482-9381 [Mich. toll free]

### TIRES

**GOODYEAR**

**BF Goodrich**

**YOKOHAMA**

**PIRELLI**

**BF Goodrich**  
RACE TIRE PROGRAM

### SHOCKS



10% DISCOUNT TO TACA MEMBERS  
MAJOR CREDIT CARDS ACCEPTED

### WHEELS

**BBS**

**GOTTA**

**wed's**  
TURBO WHEELS

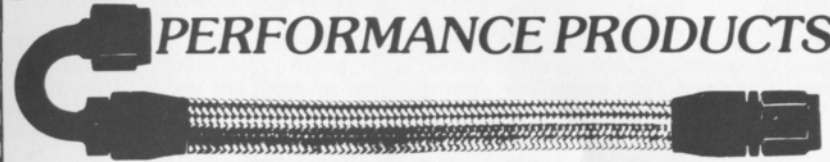
**ENKEI**

**centra CENTRA**

**Epsilon**  
ROAD WHEELS



## AUTO-CYCLE-MARINE PERFORMANCE PRODUCTS



"THE LARGEST INVENTORY IN THE MIDWEST"  
HOSE ★ FITTINGS ★ ADAPTERS

**Aeroquip**  
high performance hose and fittings

**(313) 280-1171**

**EARL'S**  
PERFORMANCE PRODUCTS

4940 Delemere, Royal Oak, MI 48073

Peter Betrus, Jr.

Catalog \$2

Thomas J. Betrus

# Hoosier<sup>®</sup> RACING TIRES

JAMALC RACING

(517) 223-8704

John  
Morris

Al  
Ciaramitaro

## Average Lap Speed

Min/Sec	MPH	Min/Sec	MPH	Min/Sec	MPH
1:00	85.326	1:15	68.261	1:30	56.884
1:01	83.927	1:16	67.363	1:31	56.259
1:02	82.574	1:17	66.488	1:32	55.647
1:03	81.263	1:18	65.635	1:33	55.041
1:04	79.993	1:19	64.805	1:34	54.463
1:05	78.762	1:20	63.995	1:35	53.890
1:06	77.569	1:21	63.204	1:36	53.329
1:07	76.411	1:22	62.434	1:37	52.779
1:08	75.288	1:23	61.681	1:38	52.240
1:09	74.197	1:24	60.947	1:39	51.713
1:10	73.137	1:25	60.230	1:40	51.196
1:11	72.106	1:26	59.530	1:41	50.689
1:12	71.105	1:27	58.846	1:42	50.192
1:13	70.131	1:28	58.846	1:43	49.704
1:14	69.183	1:29	57.523	1:44	49.227

The Waterford Hills Road Course is 1.4221 miles long (7,509 ft. center line of track). To determine the speed of any individual car, time it for one complete lap and read off the speed from this table.

## Class Records

CLASS	DRIVER	CAR	DATE	LAP TIME
FA	ANDY FALBO	MARCH	8/83	1:06.10
FC	JAY NOVAK		9/84	1:09.30
FF	VINCE MUZZIN	ROYALE	6/78	1:09.40
FF	DON KITCH	CROSSLE	7/87	1:12.30
FFR	MARK DAVIDSON	CROSSLE 32	5/84	1:17.00
F4	STUART LAMONT	XPIT	7/83	1:12.50
FV	LEE MCLEOD	LYNX	7/81	1:15.70
F440	LARRY DUPUIS	NOVAKAR	9/87	1:14.60
ASR	ED MURRAY	CHEVRON	9/81	1:10.90
CSR	CRAIG BENNETT	RALT	7/88	1:09.90
DSR	ED MURRAY	JEDDI	9/85	1:12.80
S2	LARRY CAMPBELL	LOLA	9/79	1:11.50
SREN	MIKE NEAL	SPT RENAULT	7/88	1:20.20
EP	LOU LIVENGOOD	PORSCHE 356	6/80	1:16.30
FP	BARRY HARTZEL	MG MIDGET	7/78	1:16.20
GP	KIRK CARLSON	MG MIDGET	8/81	1:17.00
HP	PAUL CAMERON	SPRITE	7/78	1:20.40
GT1	DON SAK	CORVETTE	5/86	1:13.20
GT2	R. A. ALBO	FIERO	5/88	1:29.29
GT3	CRAIG ALLEN	LOTUS ELAN	9/83	1:16.40
GT4	JERRY MORLEWSKI	FIAT 124	9/85	1:18.70
GT5	TED WOLLESEN	MINI COOPER	9/85	1:19.20
ITS	JOHN HEENEY	DATSUN 280Z	8/87	1:24.70
ITA	GREG MANKIN	MAZDA RX2	9/87	1:27.70
ITB	MIKE JONES	MUSTANG	7/88	1:25.80
ITC	CAL CORTRIGHT	FIESTA	7/88	1:27.70
RCUP	CHUCK LITTLE	RENAULT ENCORE	7/85	1:29.20
SSGT	BOBBY FEHAN	CORVETTE	8/86	1:21.60
SSA	SCOTT MCNEIL	DODGE SHELBY	7/87	1:26.00
SSB	MIKE MIEMAR	DODGE SHELBY	7/88	1:26.60
SSC	RAY KROM	VW-GTI	7/88	1:26.60

## Racing Classes

To insure fairness in competition, all road racing cars are grouped into racing classes by the Sports Car Club of America in its General Competition Rulebook (GCR). Waterford Hills Road Racing observes the GCR regulations with some minor exceptions.

The five Competition groups are: Production (sport cars), Showroom Stock (GT cars and sports cars with minimal modification), Sports Racing (Highly modified engine and body over wheels), GT (enclosed cockpit passenger cars and former big production cars), and Formula (open wheels single cockpit). Racing groups are subdivided into classes of equally competitive cars based upon engine size and handling characteristics.

The cars listed below are representative of their racing classes and include most of those you will see at Waterford Hills.

### PRODUCTION

<b>EP</b>	Porsche 356 series, MGB, Opel GT, Porsche 914/4, Triumph TR-4
<b>FP</b>	Saab Sonnet, MG Midget Mk III & IV, Lotus 7, Triumph Spitfire Mk III & IV & 1500
<b>GP</b>	MG Midget Mk I & II, Triumph Spitfire Mk I & II, MGA, Austin Healy Sprite, Fiat X1/9, Fiat 124 Spider, Alfa Romeo, Porsche Coupe
<b>HP</b>	Austin Healy Sprite Mk I & II, Fiat 850, MG Midget 948, Fiat Abarth

### SHOWROOM STOCK

<b>SS-GT</b>	New class with current model cars of SSA plus additional modifications allowed
<b>SSA</b>	Mustang Cobra, Mazda RX series, Porsche 924, Capri V-6, Datsun 280Z
<b>SSB</b>	Triumph TR-8, Scirocco, Dodge Colt, Datsun 200SX, Fiat 124
<b>SSC</b>	Fiat X1/9, Pinto, VW Rabbit, Renault LeCar, Mustang 2.3, MGB, Honda Civic, Toyota Corolla, Pontiac Astre

### SPORTS RACING

<b>ASR</b>	over 1300 cc but less than 6000 cc
<b>CSR</b>	over 850 cc up to 1600 cc (with restrictions)
<b>DSR</b>	below or equal to 850 cc
<b>S/2000</b>	uses Ford 2000 cc overhead cam engines only

### GT CLASSES

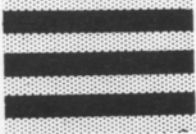
<b>GT-1</b>	Corvette, Camaro, Ford Cobra II, Shelby GT-350, Porsche 911 SC, Dodge Aspen
<b>GT-2</b>	Datsun Z series, Mazda RX7, Porsche 914/6 & 924 Turbo, Sunbeam Tiger, Triumph TR-6 & TR-8
<b>GT-3</b>	Opel 1900, Datsun 510 1800, Mustang 2300, Pinto 2000 & 2300, Cosworth Vega
<b>GT-4</b>	Fiat 124 Sports Coupe, Pinto 1600, Toyota Celica, Dodge Colt, Toyota Corolla 1600, Renault LeCar, Datsun 510 1600, Ford Escort/Lynx, VW Rabbit & Scirocco
<b>GT-5</b>	Datsun 200SX, Austin/Morris Mini Cooper, VW 1300, NSU TT, Honda Civic, Fiat 124 1200, Toyota Corolla 1200

### FORMULA

<b>FF</b>	Formula Ford — Cortina or Pinto 1600 cc engine, strict weight to engine ratio with driver's weight included in total legal weight, very equal class
<b>FFR</b>	Formula Ford Radial — the cars are the same as the above class except they must use BF goodrich T/A radial tires
<b>FV</b>	Formula Vee — all Volkswagen components, 1200 cc engine, driver's weight included in total legal weight, very competitive class
<b>F/ATLC</b>	Formula Atlantic — choice of engines in over 1100 cc up to 16000 cc range, wings and other modifications allowed, not meant to be an inexpensive race car
<b>F/CNTL</b>	Formula Continental — engine up to 1100 cc, rear wings allowed, combines the modifications of the previous Formula C and Formula Super Vee classes
<b>F440</b>	Formula 440 — utilizes Fuji two-cycle snowmobile engines and drive train, rigid suspension, wings permitted
<b>F4</b>	Formula Four — Canadian class, motorcycle engine power plant, engine size determines weight and transmission allowed

## Flags

**yellow with red stripes**



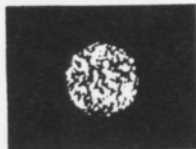
Take care, oil has been spilled or a slippery condition exists somewhere in your vicinity. Look at the track surface.

**black**



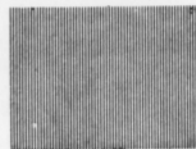
Sloppy or dangerous driving. Complete the lap you are on, stop at the Start/Finish line for consultation with Chief Steward. Waving Black Flag (displayed on all corner stations) means the race is stopped. Slow down immediately and proceed around the track with extreme caution to the pit lane for a re-start.

**black with orange ball**



(Meatball Black Flag) There is something mechanically wrong with your car. Proceed to your pits at reduced speed.

**green**



(Or no flag) Course is clear.

**yellow**



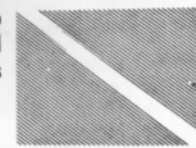
(Stationary) Take care, danger, no passing.  
(Waving) Great danger, be prepared to stop, no passing.

**red**



Waving red (displayed by the Starter only) means the race is stopped, slow down immediately and proceed around the track with extreme caution to the pit lane.

**blue with diagonal yellow stripes**



(Motionless) Another competitor is following you closely.

**checkered**

You have finished the race (or practice session). Complete one "cool-off" lap at reduced speed before entering the pits.



## Waterford Hills Course Map

a 1.5 mile asphalt road course at waterford, michigan



# WATERFORD DIGEST

## Waterford Hills 1988 Road Racing Calendar Schedule

Race 1	May 28-29	Race 4	July 30-31
Race 2	June 25-26	Race 5	Aug. 27-28
Race 3	July 9-10	Race 6	Sept. 24-25

Mark your calendar now for the Fourth Annual Meadowbrook Historic Races to be held August 6 and 7 at Waterford Hills.

The races will not only feature vintage automobiles, there will also be two celebrity races on Saturday sponsored by Volkswagen. One race will feature local media representatives racing identically equipped VWs, the other will feature national media reps. in the same cars. Last year these turned into very competitive matches and it appears they will again this year.

Watch for more details in coming Digests and plan to be there.

### Vintage Race Aug. 6-7

#### RACING RAIN OR SHINE

The hills of Waterford are being invaded . . . with an army of sports cars, sedans and formula cars in fierce, wheel to wheel competition . . . and for 1988 we've assembled the largest field in our 30 year history! Watch over 130 top drivers battle it out in the finest racing machinery from America and Europe. Corvette, Porsche, Datsun. Everything from Capris to Camaros, McLarens to MG's. All together, fighting it out on a mile-and-a-half track with 13 right and left turns that twist up and down hills like no other road course in the U.S.A.

#### EASY ON THE WALLET

Admission is just \$3.00 for Saturday, \$5.00 for Sunday, or \$6.00 for the entire weekend. Children under 12 are always free and a Season Ticket is only \$20.00. The track opens at 10 a.m. for practice and qualifying. Racing begins at 1:30 p.m. on Saturday (seven races) and at 11:30 a.m. on Sunday (ten races). For more information phone (313) 623-0444.

#### EASY TO GET TO

Chances are you live within a few minutes of the Midwest's premier road course. The W.H.R.R.I. Race Track is located just 6 miles north of Pontiac on Waterford Road, 1/4 mile each of Dixie Highway (U.S. 10) in Waterford, Michigan. The easiest route to take is I-75 to the southbound Sashabaw Exit. Take Sashabaw south to Pelton Road, then take Pelton west to Waterford Road. The total distance after exiting the expressway is 2-1/2 miles.

New, Used reproduction Parts and Accessories  
Custom Paint and Body Repair

# BOJAY

## HiTech Automotive

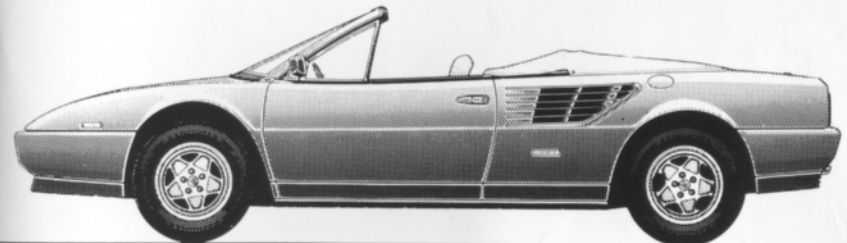
design and fabrication

DOUG FEHAN  
BOB FEHAN  
313/549-5410

4712 Fernlee  
1st Block East of Coolidge, S. of 14  
Royal Oak, Michigan 48073

*Now...3.2 Mondial Cabriolet*

A Ferrari is an investment: in pride, in excellence, in achievement. Protect your investment by purchasing and maintaining your Ferrari through your authorized dealer. Only your authorized Ferrari dealer can provide full factory warranty, service and parts.



*The Sports Car Exchange*

MICHIGAN'S EXCLUSIVE AUTHORIZED AGENT FOR  
FERRARI

14510 MICHIGAN AVE. DEARBORN, MICHIGAN 313-581-6222

## THE WATERFORD DIGEST

Published by Waterford Hills Racing Inc., 1988