



RACING RAIN OR SHINE

1974

Race Dates

JULY 27-28

AUGUST 24-25

SEPTEMBER 28-29

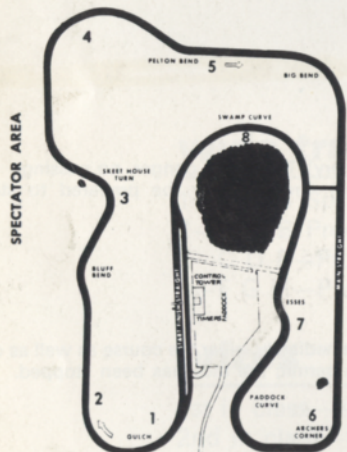
ADMISSION

\$2.50 Sat. \$4.00 Sun. \$5.50 Per Weekend

**BRING THIS CARD WITH YOU
TO RECEIVE A 50¢ DISCOUNT**

SEASON TICKET \$15.00

**{ CHILDREN UNDER 12
ADMITTED FREE }**

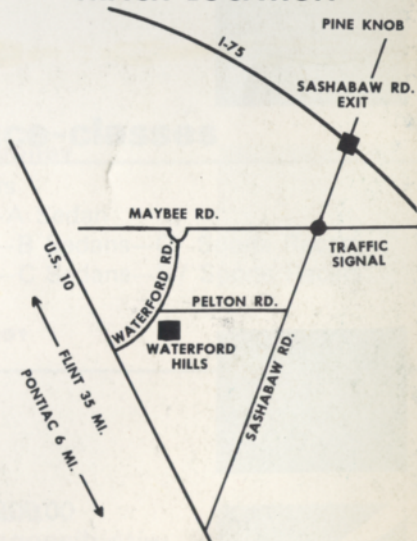


WATERFORD HILLS

Track opens at 10:00 a.m.

Phone: (313) 623-0444

TRACK LOCATION



CITY OF PONTIAC WIDE TRACK ROAD RACE JULY 4th 1974

SANCTIONED BY WATERFORD HILLS ROAD RACING INC.



The track is an up and down hill, twisting mile-and-a-half of smooth blacktop with 13 right and left turns. Sterling Moss termed it the most challenging small road circuit in the world. This track is unique in that 90 percent of the road course can be seen from the spectator area. Bring your picnic basket to our grassy hillside and watch exciting Trans AM Sedans, Sports Cars, and Formula Cars. Beer, pop and food available at the concession stand.

Track opens at 10:00 a.m. for practice and qualifying. Racing begins 1:30 p.m. Saturday (7 races)—11:30 a.m. Sunday (10 races).

FREE PARKING—CAMPGROUNDS AVAILABLE



round the houses and down the streets

By Ed Houlihan

Racing cars through the streets and around the buildings of a town or city is an old and exciting sport. It all began with the Greeks and their Chariots in Athens many lifetimes ago. Eventually all of Europe was engulfed in this fascinating pastime. By the early and mid 1900's road racing had attained great popularity with races such as the Mille Miglia in Italy, LeMans in France, and the Grand Prix of Monaco.

By 1950 all of these great "Road Races" had fallen by the wayside. Because of legislation and politics all but one were forced "Indoors" so to speak to closed circuit race tracks and not permitted on the streets. The Monaco Grand Prix was the only thread remaining of an otherwise extinct heritage.

In 1951 the Americans took up the challenge. In a small town in upstate New York it all began to come alive and Watkins Glen, home of the United States Grand Prix, was born.

The spark was kindled and in 1952 Put-In-Bay, Ohio

became the Road Racing Capital of the Midwest and although it ceased operation in 1956, "The Racers" never gave up and on October, 1963 the Waterford Hills officials met the challenge and Put-In-Bay came back in all its glory and remains one of our greatest achievements, that is until today.

The Waterford Hills officials and their workers are *your* officials today. They have been responsible for much of the history of Road Racing in this country. The track in Waterford, Michigan is one of the few club-owned road courses in the world and attracts drivers from all over the Midwestern United States and Canada.

Today, July 4th, a new chapter in the history of Road Racing is being written, with something new being added. Members of Waterford Hills were at the "Glen," they were at "Put-In-Bay" and they are here; but, in your City, on this day, *you* are part of it. You are making history.



- 1 traffic jam
2 follow me, guys
3 gary bendik, making a nuisance of himself.
4 he did it to me, and so i did it to him, and then he did it to me, and . . .
5 unsafe at *any* speed?
6 quick! what takes the worry out of being close?



racing classes

PRODUCTION

- A** Abarth Simca 2000; Cobra 427; Corvette Sting Ray Roadster & Coupe 350, 1970, 1971; Corvette Sting Ray Roadster & Coupe 396, 427, 454 thru 1973; DeTomaso Pantera 351, 1972-73; Griffith 200; Porsche GTS/904.
- B** Alfa Romeo Montreal; AMX Sports Coupe 290 thru 1969; AMX Sports Coupe 343 thru 1969; Cobra 289; Corvette 283, 327 (1962); Corvette Sting Ray Roadster 327, 350, 1963 thru 1973; Ferrari 365 GTB 4 Daytona; Jaguar Series 3 (V-12); Porsche 911E Coupe/Targa, Cabriolet, 1969; Porsche 911S Coupe/Targa, Cabriolet, 1969; Porsche 911E Coupe/Targa, Cabriolet, 1970-1971; Porsche 911S Coupe/Targa, Cabriolet, 1970-1971; Shelby GT 350 thru 1966; Shelby GT 350 1-4V, 1967; Shelby Cobra GT 350 Coupe, 1969.
- C** Alfa Romeo TZ; Datsun SRL 311U (Mikuni); Datsun 240Z Sports (Hitachi & Mikuni) thru 1973; Ferrari Dino 246 GT; Jaguar E 3.8 & 4.2; Lotus Elan thru S-4 (Roadster, Coupe & Drophead); Lotus Europa Twin Cam; Lotus Elan Plus Two; Lotus Seven Series Four; MGC, MGC GT; Porsche Carrera 1500, 1600; Porsche 911, 911S, 9111, (Coupes) thru 1968; Porsche 911T, Coupe/Targa, Cabriolet, 1969; Porsche 911T, Coupe/Targa, Cabriolet, 1970, 1971; Porsche 911T, E, S Coupe/Targa, Cabriolet, 1972; Porsche 914/6 thru 1972; Sunbeam Tiger 260; Triumph T-250; Triumph TR-5; Triumph TR-6 thru 1972.
- D** Alfa Romeo Duetto 1750 thru 1971; Alfa Romeo 2000 Spider; Austin Healey 3000; Daimler SP-250; Datsun SRL 311U (Hitachi); Elva Mk III 1800 & Mk IV 1800; Elva Mk IV T 1800; Jaguar XK 120, 140, 150; Jensen Healey; Lotus Super Seven; Lotus Europa Mk 46, 54 (65); Porsche 914S; Triumph GT-6 & GT-6 Plus; Triumph GT-6 Mark III (2 carb.) thru 1972; Triumph GT-6 Mark III (1973 Swing Axle); Triumph TR-4; Triumph TR-4A IRS; TVR Mk III 1800; Yenko Stinger.
- E** Alfa Romeo Duetto 1600; Alfa Romeo Giulia Spider Veloce 1600; Alfa Romeo Giulia GT & GTZ; Austin Healey 100-6; Elva Mark I, II, III, 1662; Elva Mark IV 1622; Fiat 124 Sport Spider 1600 (2 carb.); MGB MGB GT; Morgan +4; Opel GT 1900; Porsche 912 Coupe/Targa, Cabriolet thru 1968; Porsche 912 Coupe/Targa, Cabriolet, 1969; Porsche 914/4 thru 1973; Porsche 356C/1600SC & 356B Super 90; Porsche 356 1500/1600 A, B, C; Saab Sonnet V-4, thru III; Triumph TR-2, 3, 3A, 3B; Turner 1500; TVR Mk III 1622; TVR Vixen 1600 Ford; Volvo 1800 (1990 cc) 1969, 1800E, 1800ES thru 1973.
- F** Alfa Romeo Guilietta Super 1300; Alfa Romeo Sprint Speciale; Alfa Romeo Guilia Sprint & Super 1600; Alfa Romeo Spider 1300 Junior; Alfa Romeo Junior Z; Alpine A100 1100; Austin Healey 100-4, 100M; Austin Healey Sprite 1275; Datsun SPL 311 & SPL 311U; Fiat 124 Sport Spider thru 1970, 1600—1971-1973 (one carb.); Fiat Abarth OT 1300/124 Coupe; Lotus 7 & 7 America; MGA 1500, 1600, 1622; MGA Twin Cam; MG Midget 1275 thru 1973; Morgan 4/4 Mk V; Sunbeam Alpine; Triumph Spitfire Mk III thru 1970; Triumph Spitfire Mk IV thru 1972; Triumph Spitfire 1500; Volvo P 1800 S (1780 cc).
- G** Alfa Romeo Sprint & Spider 1300; Austin Healey Sprite 1100, AN 8 (1100); Datsun SPL 310U; Fiat Abarth OTS 1000 Coupe; Fiat Abarth 1000 Pushrod; Fiat Abarth OT 1000 Spider; Honda S800; Matra; MG Midget AN2, AN3; Porsche 1300; Rene Bonnet CRB; Triumph Spitfire Mk I & II; Turner 950S.
- H** Austin Healey Sprite 948 Mk. I & II; Fiat 850 Spider, Racer thru 1973; Fiat Abarth 850S, 750 GT, 750MM; Honda S600; Mg Midget 948 MGTC, TD, TF 1250; MG TF—1500; Morgan 4/4 Mk. IV; Opel GT 1100 thru 1971.

SHOWROOM STOCK SEDAN

Austin Morris Marina, 1800 cc; Chevrolet Vega, 2300 cc; Datsun 510 (1972 only), 1600 cc; Datsun 610 (4 door); Dodge Colt, 1600 cc; Fiat 124S, 1437 cc; Ford Pinto, 2000 cc; Opel 1900 Sedan (2 dr or 4 dr), 1900 cc; Plymouth Cricket; Renault R12, 1565 cc; VW Super Beetle & Beetle, 1600 cc; SAAB 96 Sedan; Subaru 1400 Sedan; Toyota Corona, 1900 cc or 2000 cc.

SHOWROOM STOCK SPORTS CAR

Fiat 124 Spider, 1592 cc or 1608 cc; MGB and MGB-GT, 1800 cc; MG Midget, 1275 cc; Opel GT, 1900 cc; Porsche 914/4, 1679 cc; Triumph GT-6 Mark III, 2000 cc; VW Karmann Ghia Coupe or Convertible, 1679 cc.

SPORTS RACING

ASR Over 2000 cc
BSR Over 1300 cc to 2000 cc
CSR Over 850 cc to 1300 cc
DSR Below to 850 cc

FORMULA **FF** FORD
FSV SUPER-VEE
FV VEE
FA 1100 cc to 3000 cc
FB 1100 cc to 1600 cc
FC Up to 1100 cc

SEDAN

AS Over 2500 cc with proper homologation forms.
BS Over 1300 cc to 2500 cc with proper homologation forms.
CS Up to 1300 cc with proper homologation forms.
DS Separate Waterford Class



wide track race-classes

- 1—A & B Sports Racers
- 2—A & B Production—A Sedan
- 3—C D E—Production—B Sedans—C/ Sports Racers
- 4—F G H—Production—C Sedans—D/ Sports Racers

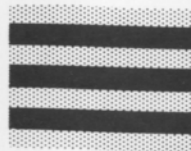
prizes

- 1st in class—\$250.00
- 2nd in class—\$125.00
- 3rd in class—\$ 75.00
- 4th in class—\$ 50.00
- 1st overall additional \$200.00

schedule

- Registration 7:00 am
- Tech Inspection 7:30 am
- Practice Classes 3 & 4 9:30 am
- Practice Classes 1 & 2 10:00 am
- 1st Qualifying Race 10:45 am
- Lunch Break 11:30 am
- 2nd Qualifying Race 12:30 pm
- Feature Race (1-hour) 2:00 pm

flags



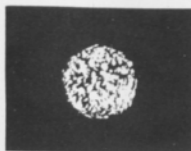
yellow with red stripes

Take care, oil has been spilled or a slippery condition exists somewhere in your vicinity. Look at the track surface.



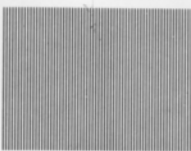
black

Sloppy or dangerous driving. Complete the lap you are on, then stop at the Start/Finish line for consultation with the Chief Steward.



black with orange ball

(Meatball black flag) There is something mechanically wrong with your car. Proceed to your pits at reduced speed.



green

(Or no flag) Course is clear.



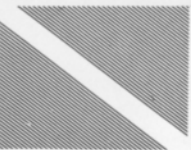
yellow

(Stationary) Take care, danger, no passing.
(Waving) Great danger, be prepared to stop, no passing.



red

Stop immediately, clear the course as well as circumstances permit; the race has been stopped.



blue with diagonal yellow stripes

(Motionless) Another competitor is following you closely.



checkered

You have finished the race (or practice session). Complete one "cool-off" lap at reduced speed before entering the pits.