

FALVEY MOTORS



THE BEST JAGUARS EVER BUILT:
There is no formula for the creation of a classic. Yet, for more than 50 years Jaguar has given the world classic after classic.

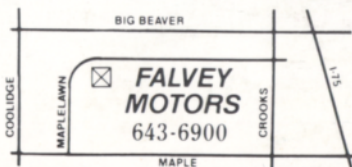
Here are two of the finest Jaguars ever built: the magnificent Series III sedan and the awesome V-12 powered S-type GT.

Both share the inimitable Jaguar qualities of graceful design, quick response and agile handling. Both are equipped with precise power rack

and pinion steering, racebred four-wheel independent suspension and decisive four wheel power disc brakes.

Inside, Jaguars provide a level of luxury and quiet seldom, if ever, equalled in a high performance motor-car. Test drive them today. ENJOY TOMORROW. BUCKLE UP TODAY.

JAGUAR
A BLENDING OF ART AND MACHINE



15 Mile (Maple) between Coolidge and Crooks

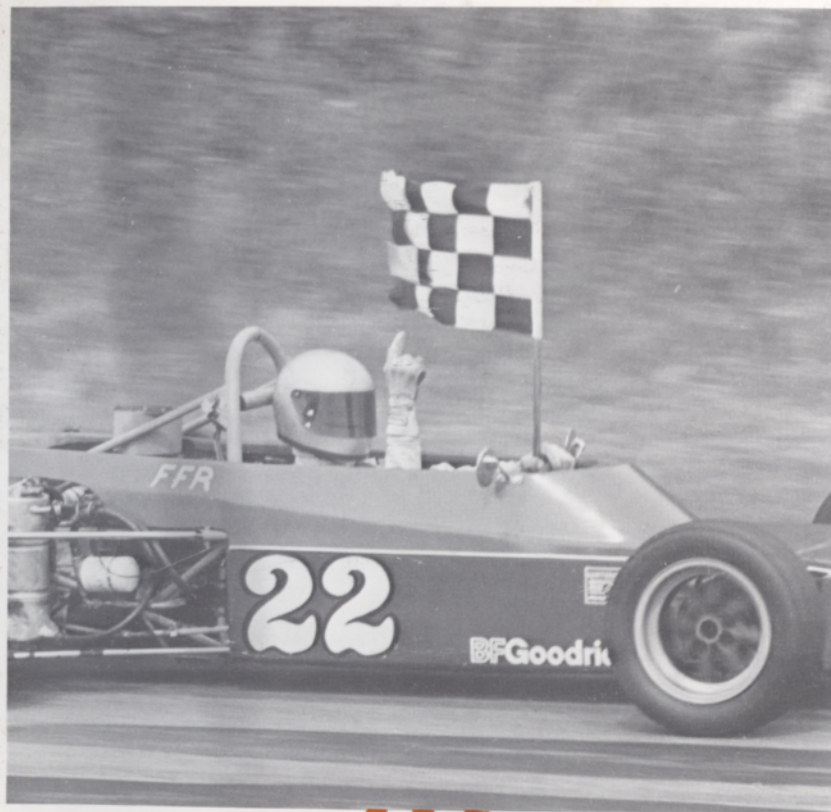
40 years...Creating the Competition!!

FALVEY

WATERFORD HILLS

ROAD RACING

oakland county sportsmen's club



1986 WATERFORD DIGEST

JULY
\$2.00

DON CASTLE



Contents



- 2. The Inside Line
- 3. Officials
- 10. Top 10 Drivers Standing
- 14. Feature Story
- 29. Looking Back With Bizer
- 32. Average Lap Speed Chart
- 32. Class Records
- 33. Racing Classes
- 34. Flags
- 35. Course Map
- 36. Racing Schedule

Staff

Editor: *DAN HILL*
Feature Editor: *SHERRY HARRINGTON*
Advertising Director: *JERRY MORLEWSKI*
Design and Production: *TAURUS ADVERTISING*
Photographers: *AL BIZER*
DON CASTLE
KARL RACENIS

Cover Photo by *AL BIZER*

TOYOTA TOYOTA TOYOTA TOYOTA TOYOTA TOYOTA TOYOTA TOYOTA

PACE CAR FURNISHED BY

PAGE TOYOTA



8 1/2 & TELEGRAPH
SOUTHFIELD, MICH.

352-8580

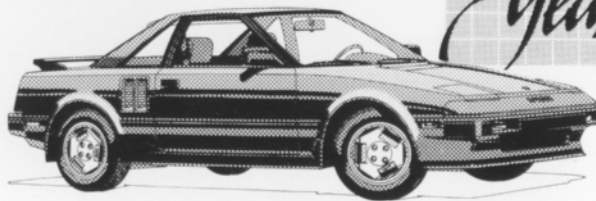
MICHIGAN'S #1 TOYOTA DEALER
IN SALES, SERVICE AND BODY REPAIR



WINNER OF THE NATIONAL SERVICE AND
CUSTOMER RELATIONS AWARD FOR 7 YEARS

FINE SELECTION OF USED IMPORT
& DOMESTIC ECONOMY CARS

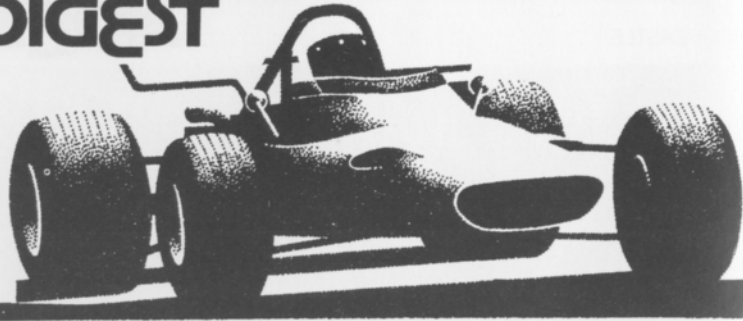
MOTOR TREND MAGAZINE



TOYOTA MR2

**THE PRIX-RACE FAVORITE —
THE TOYOTA CELICA SUPRA.**

TOYOTA TOYOTA TOYOTA TOYOTA TOYOTA TOYOTA TOYOTA TOYOTA



The Inside Line

As I sit here writing the Inside Line on the Fourth of July, in order to make my deadline — I'm listening to the "Battle Hymn of the Republic" and watching the Statue of Liberty celebration. Impressive isn't a strong enough word to describe it and I keep wiping away the tears.

What a glorious place we live. It's a country where we are free to be whatever we want to be — a writer like me or a race car driver like those who race here at Waterford Hills.

A few weeks ago, the day before the Grand Prix started, I happened to be on a plane flying into Detroit. I sat next to a young man from New Zealand who was a motorsports fan. A driver himself, at his "local speedway", he was very excited about our world class racing event and was collecting everything he could about the race. I invited him to a Waterford weekend if he could make it during his 8-10 week stay in the area. He said they can't get much televised coverage of motorsports in his country — rarely see a whole televised race. Only occasionally do they have any national or international events anywhere in the country — though they do host an annual international pro-rally event.

New Zealand is not a suppressed country — and is itself a nice place to live. But it doesn't begin to compare with all that we Americans can lay claim to. It illustrates how lucky we are in the U.S. — to follow our dreams — whether it be in our careers or our hobbies. We are free to love life the way we want to love it.

Our sponsors for the July races are B.F. Goodrich and Autofab. WHRRI thanks them for their interest and support.

On behalf of WHRRI, I welcome you to Waterford Hills this weekend. I hope you enjoy your time with us and come back again next weekend, Aug. 2 and 3, to celebrate the history of motorsports at the Meadow Brook Historic Races. They might not bring the tears to yours eyes that Miss Liberty does, but it might bring back a few memories and it's guaranteed to be a good time.

Sherry Harrington

AL BIZER



Officials

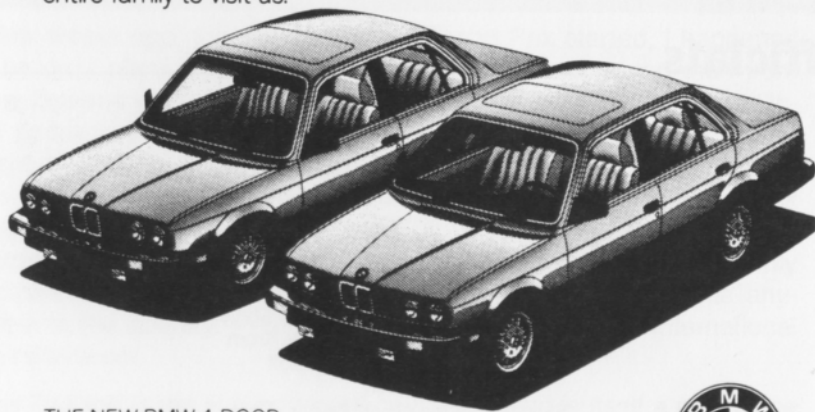
President	Don Burry
Secretary	Burck Grosse
Vice President	Dave Shook
Director of Racing	Jerry Morlewski
Race Coordinator	Dave Hinman
Chief Steward	John Morris
Asst Chief	Eddie Atkinson
Chief of Flags & Communications	Willy Perez
Chief Registrar	Carol Humphreys
Chief of Safety	Blackie Meyers
Chief of Timing & Scoring	Peggy Krom
Chief Starter	Hal Goff
Chief of Tech	
Stewards of the Meet	Bernie Fling Peter Quienet
Licensing Chairman	Jerry Shiloff
Membership Chairman	Diane Wollesen
Trophy Chairman	Cynthia Kempton
Grid Marshall	Emily Whitehead
Paddock Marshall	Bob Albo
Course Control	Blackie Meyers
Sound Control	Roger Roeske
Promotions	Mike White
Public Relations	Sherry Harrington
Director of Facilities	Jim McIntosh
Controller	Danny MacDonald
Newsletter Editor	Jack Pringle

**NOW WHEN YOU ENTER
THE WORLD OF
BMW SPORTS SEDANS,
YOU CAN BRING
YOUR ENTIRE FAMILY.**

Typically, 2-door sports sedans have been the exclusive province of drivers with no real use for the backseat.

The new BMW 4-door, 3-Series sports sedans have opened their doors to a more diverse group: those who desire exhilarating performance, but have something special to put in the backseat—a family.

If you'd like to test-drive one of our new 4-door BMW's, bring your entire family to visit us.



THE NEW BMW 4-DOOR
325 AND 325e



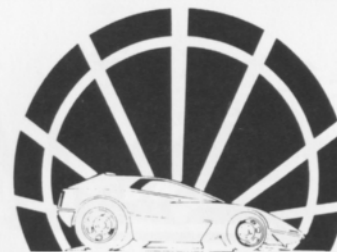
THE ULTIMATE DRIVING MACHINE.

©1986 BMW of North America, Inc. The BMW trademark and logo are registered.

Erhard B.M.W. Inc.

24130 Telegraph Rd. at 9½ Mile, Southfield, 352-6031

*Complete Line of
Brand Name and
Custom Parts and
Accessories*



*Specialists in all
phases of High
Performance Work*

**RACELAND AUTO
SUPPLY**
PERFORMANCE RACING ENGINES

26700 W. 8 Mile Rd., Southfield, MI 48034

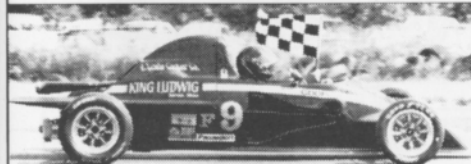
355-2288

Bet. Inkster and Telegraph

COMPLETE MACHINE SHOP

OPEN 6 DAYS A WEEK - CLOSED SUNDAY

Panasport RACING WHEELS

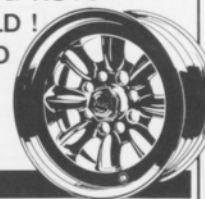


FORMULA FORD WHEELS
FOR
SWIFT · CITATION · REYNARD · OTHERS

- STRONG, LIGHT WEIGHT ALUMINUM
- BRAKE COOLING ONE PIECE DESIGN
- USES STANDARD LUG NUTS
- GOOD LOOKING GOLD!
- REASONABLY PRICED

STUFF
overill racing

(313) 350-2881



STUFF
overill racing

AUTHORIZED DEALER FOR:

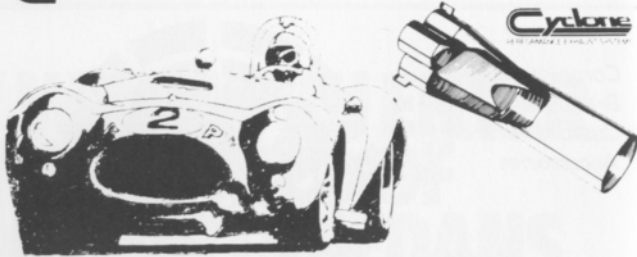
- LOLA CARS ·
- HEWLAND SPARES ·
- KONI SHOCKS ·
- FERODO BRAKES ·
- MOMO STEERING WHEELS ·
- LIFELINE FIRE SYSTEMS ·
- PULSAR BATTERIES ·
- HYLOMAR PRODUCTS ·
- GAUGES ·

AND MUCH MORE...

parts and service for serious racing

CRANE
CROCKERS

WAR
CYCLONE
ANTI REVERSIONARY
RACING HEADERS



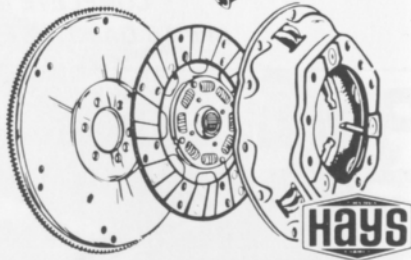
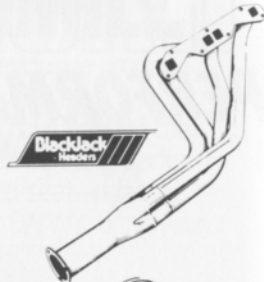
Redford Speed

26577 GRAND RIVER
532-2050 or 532-6223
10-8 MON-FRI 10-6 SAT

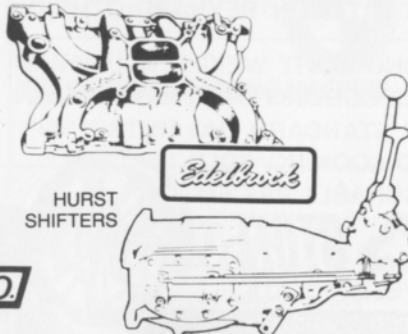
- Of Special Interest:
- SIDEMOUNT HEADERS
 - ROLL BARS
 - KONI SHOCKS
 - SWAY BARS
 - DRIVING LIGHTS
 - COMP. SEAT BELTS AND HARNESSSES
 - RACING CAMS
 - LAKWOOD
 - HOLLEY CARBS
 - TRANS AM OIL PANS
 - RACING OIL
 - HOOKEE HEADERS
 - HURST
 - MALLORY & ACCEL IGNITION SYSTEMS



SYMBOL OF
SW
EXCELLENCE



CRANE
Cams



MR. **G** CO.
GASKET

EF Hutton
Great Lakes Region

SMR/PCA MEMBER

**BILL
COOK** PORSCHE

"NOBODY EVEN COMES CLOSE"



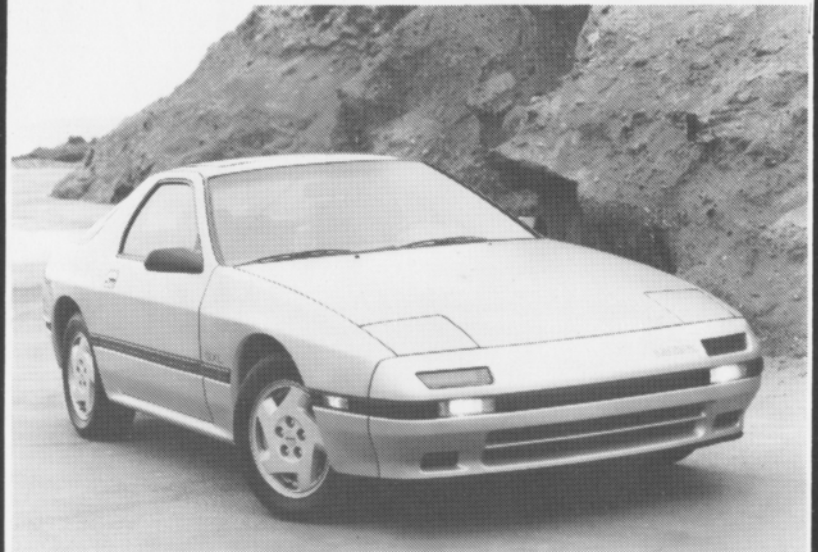
37901 Grandriver at 10
Farmington Hills

OPEN MONDAYS TILL 9:00
TUES THRU FRI TILL 6:00

471-0044

**BILL
COOK** mazda

37911 Grand River at 10 Mile Rd.
Farmington Hills, MI 471-0800



**BILL
COOK** mazda

"Where Excellence is the Standard, Not the Option"

TOP TEN DRIVER COMPETITION STRONG

As the racing season is half completed, the competition for top ten driver intensifies. Ray Krom of Plymouth has a strong lead with 75 earned points. He is followed by Greg Wilkinson of London, Ont., and Pat Nowak of Ann Arbor, who are tied with 65 points. Tom Shaver of Livonia is just behind them with 64 points. The top 25 drivers are:

1 Ray Krom	75
2 Greg Wilkinson	65
Pat Nowak	65
4 Tom Shaver	64
5 Michael Neal	61
6 Peggy Krom	56
Kerry Bowman	56
8 Jerry Morlewski	55
9 Ron Miller	54
Skip Froh	54
11 Ted Wollesen	52
12 Cal Cortright	51
Dwight Woodbridge	51
14 James Vollmers	48
15 Jeff Ervin	46
16 Terry Richards	45
Lewis Cooper Jr.	45
18 Doug Buist	39
19 Tom Kozak	37
20 Dan O'Conner	36
21 Don Kitch	35
22 Jim Lockwood	34
23 Scott Kiefer	32
Scott McNeil	32
Dean Voltmer	32

WILLIAM A. KIEFER
President

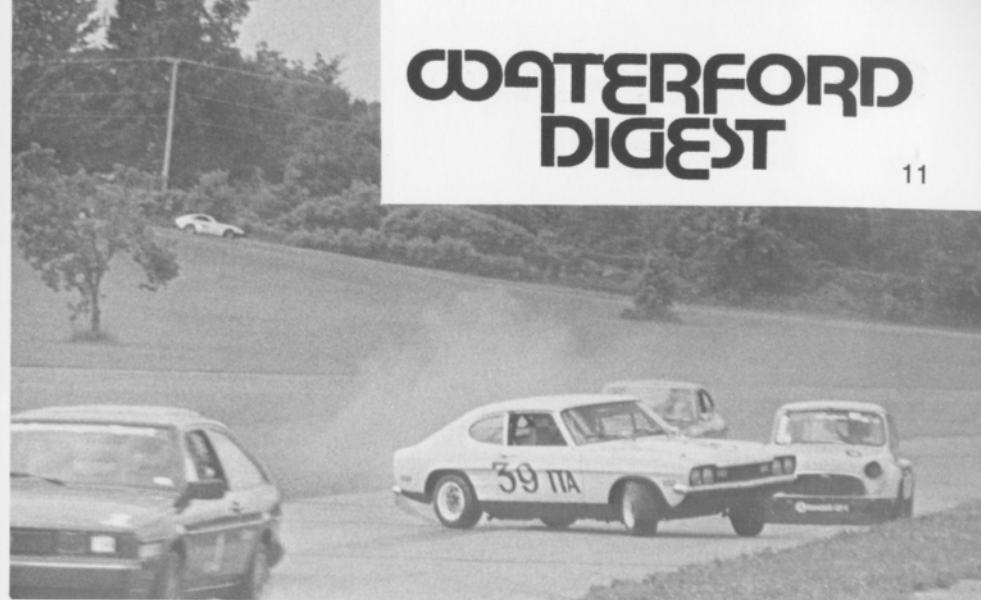
SCOTT W. KIEFER
Vice-President

Micro Gauge, Inc.

**CNC Machining
O.D. Grinding
Precision Honing**

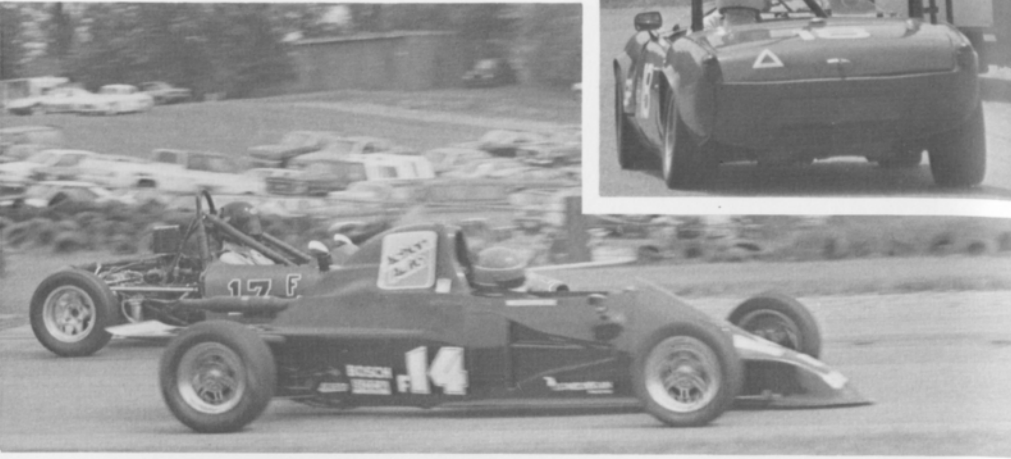
(517) 546-7036

5910 E. Grand River
Howell, MI 48843

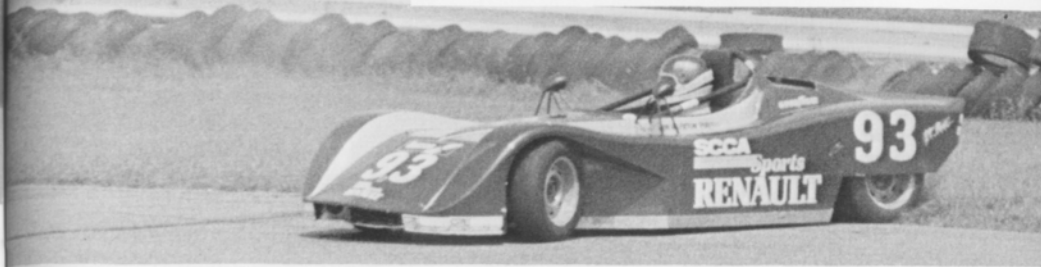


PHOTOS BY DON CASTLE





ALL PHOTOS ON THIS PAGE BY DON CASTLE



PHOTOS BY DON CASTLE



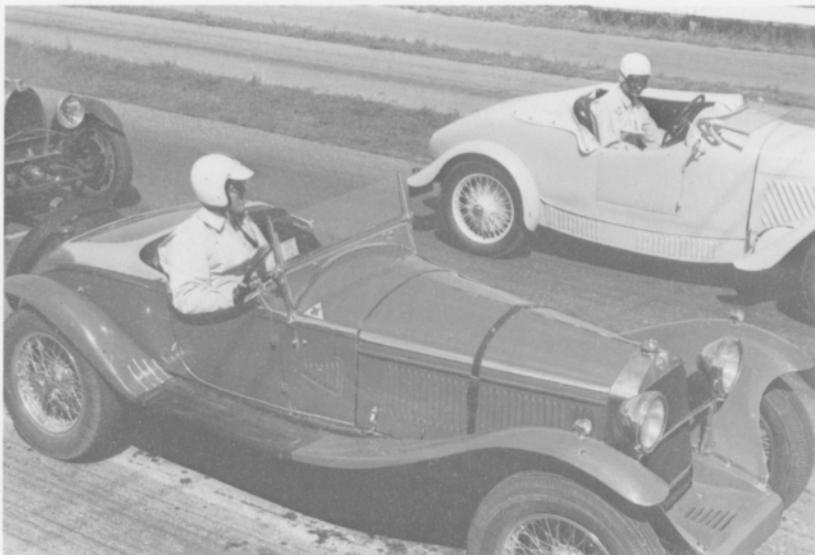
MEADOW BROOK HISTORIC RACES: A Touch of the Past at Waterford Hills

by Sherry Harrington
Feature Editor

The hills may not be alive with the sound of music next weekend, but they will be filled with the sounds of the engines of vintage and historic race cars when the second annual Meadow Brook Historic Races come to the Waterford Hills Road Racing, Inc. Race Track on Aug. 2 and 3.

It will be the streets of Clarkston that are filled with the sound of music — both Friday night, Aug. 1, for its mini-concours of historic race and street cars, and on Saturday morning, Aug. 2, for its Festival of Cars Parade. Township officials have scheduled some of the township's sesquicentennial festivities around the Meadow Brook Historic Races. Friday's activities will be from 6-9 P.M., at Village Park, Main and Depot Streets, in downtown Clarkston. The Saturday parade will begin at 10 A.M., at the junior high school and will continue through downtown Clarkston, as well.

The Meadow Brook Historic Races are sponsored by GMC Truck. Competitors will be coming from all over the country, from the east coast to the west coast. Cars will range from before World War II to as late as 1967. There may also be some later model sports cars that are in the "special interest" category.



AL BIZER

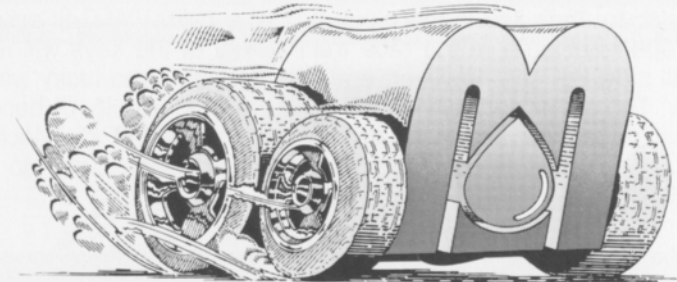
Both Saturday and Sunday are spectator events. The schedules are:

Saturday, Aug. 2:

10 to 11 a.m. Parade, Main Street, Clarkston
 10 a.m. to noon Practice sessions at the track
 noon to 1 p.m. Marque parade and touring sessions
 1 to 3 p.m. Qualifying sessions
 3 to 3:30 p.m. Touring sessions
 3:30 to 6 p.m. Races
 6 p.m. WHYT-Volkswagen Free Car Drawing and
 Mini-Go-Kart Race

Sunday, Aug. 3:

10 to 11 a.m. Warm-up sessions
 11 a.m. to noon Races
 noon to 1 p.m. Marque parade and touring sessions
 1 to 3 p.m. Races
 3 to 3:30 p.m. Touring sessions
 4 to 5:30 p.m. Races



See you in the winner's circle!

Give your car the competitive edge, with Mid-States Petroleum, the official supplier of Union 76 racing gasoline at Waterford Hills. We also carry CAM-2 and Howell racing gasolines, racing methanol, motor oils, and lubricants, that will have you leading the pack. Call Mid-States today and get the edge!



Mid-States Petroleum, Inc.
 P.O. Box 186 • Troy, Michigan 48099
 In Michigan, call 1-800-482-2611
 For rest of USA, call 1-800-554-0500

Included in the Saturday afternoon competition will be the Volkswagen Media Challenge. The two races will be five to ten laps in length. One will feature national media drivers and the second will feature local media drivers.

National media will include: Csaba Csere of Car and Driver Magazine, John Dinkel of Road and Track Magazine, C. Van Tune of VW and Porsch, John Stein of Automobile Magazine and Jack Seamonds of U.S. News and World Report.

Local media will include: Nickie McWhirter of the Detroit Free Press, Gene Taylor of WXYZ-TV, Gary Cubberly of WJBK-TV, Barbara McClellan of the Detroit News and J.P. McCarthy of WJR-Radio.

These media races proved to be very exciting at the first Meadow Brook Historic Races and should be again this year, as several of the drivers have attended drivers schools and become "experienced race car drivers".

The last event of the day on Saturday will be mini-go-kart races sponsored by WHYT Radio and Volkswagen. WHYT will be running a promotion prior to the races. Participants will enter a contest at Volkswagen dealerships. The radio station will give 96 winners an automobile key and tickets to the races. These 96 winners will have the chance to try their key in the glove box of a 1986 VW Golf on display in the spectator area at the race track. Eight of the keys will fit. Only one will start the car, however, and that person is the lucky winner of the car. The seven runners-up will have the opportunity of becoming race car drivers for a race against one of the WHYT disc-jockeys in three-lap competition concluding the day's activities. Listen to WHYT for details.



AL BIZER

Plan to join us for a weekend of excitement, both in Clarkston and at Waterford Hills Race Track. You might also want to attend the Concours d'Elegance which will take place at Meadow Brook Hall on the campus of Oakland University in Rochester. This sixth annual fundraiser, benefitting Meadow Brook Hall, will feature vintage and historic automobiles from all over the world on the rolling grounds of the hall.



DON CASTLE

KAMEI • BOGE • LÖBRO • LEISTRITZ • BILSTEIN • HELLA • BOSCH • RONAL



IMPORT SERVICE SPECIALISTS

DEDICATED TO
DOING IT RIGHT
FOR OVER 14 YEARS

681-8081

3080 W. HURON
WATERFORD

335-5424

1803 ORCHARD LK. RD.
BLOOMFIELD TOWNSHIP

KAMEI • BOGE • LÖBRO • LEISTRITZ • BILSTEIN • HELLA • BOSCH • RONAL



WE'RE BACK!

1985 THE CHAMPIONSHIP SEASON • IMSA CAMEL GTO: CHAMPION JOHN JONES, MOTORCRAFT FORD MUSTANG — FORD WINS: 14 OUT OF 17 RACES — 12 POLE POSITIONS — 13 FASTEST RACE LAPS — MANUFACTURERS' CHAMPIONSHIP • **NASCAR WINSTON CUP:** FORD WINS 14 OF 28 RACES — BILL ELLIOTT, COORS/MELLING FORD THUNDERBIRD: RECORD 11 NASCAR SUPERSPEEDWAY WINS — 11 POLE POSITIONS — ELJER DRIVER-OF-THE-YEAR AWARD — VOTED NASCAR'S MOST POPULAR DRIVER — ALL-TIME SEASON EARNINGS RECORD OF \$2,383,186 — WORLD STOCK CAR QUALIFYING RECORD AT 209.398 MPH — WORLD RECORD FOR 500-MILE RACE AVERAGE SPEED AT 186.288 MPH • **NHRA PRO STOCK:** SIXTH-TIME CHAMPION BOB GLIDDEN, CHIEF AUTO PARTS FORD THUNDERBIRD — WINNER 5 OF 13 NHRA EVENTS — TOP QUALIFIER 10 TIMES — SET NHRA NATIONAL PRO STOCK RECORDS FOR TOP SPEED (186.87 MPH) AND ELAPSED TIME (7.49 SECONDS) — 4 ELAPSED TIME TRACK RECORDS — 2 TOP SPEED TRACK RECORDS • **LYN ST. JAMES, FORD MUSTANG PROBE:** FASTEST WOMAN IN RACE HISTORY ON A CLOSED COURSE AT 204.233 MPH — SET 13 NATIONAL AND INTERNATIONAL SPEED RECORDS • **NASCAR WINSTON CUP ROOKIE OF THE YEAR:** KENNY SCHRADER, SUNNY KING FORD THUNDERBIRD • **SCORE/HDRA OFF-ROAD CHAMPIONSHIP:** CLASS 7 CHAMPION MANNY ESQUERRA, CHIEF AUTO PARTS FORD RANGER — WINNER 5 OUT OF 10 EVENTS — OFF-ROAD RACING "TRIPLE CROWN" WINNER FOR SECOND TIME — FIFTH CLASS 7 CHAMPIONSHIP IN 6 YEARS • **NHRA FUNNY CAR:** CHAMPION KENNY BERNSTEIN, BUDWEISER KING/MOTORCRAFT FORD TEMPO — WINNER 6 OF 13 NHRA EVENTS — TOP QUALIFIER 6 TIMES — 5 ELAPSED TIME TRACK RECORDS — SET NHRA ELAPSED TIME NATIONAL FUNNY CAR RECORD (5.569 SECONDS)

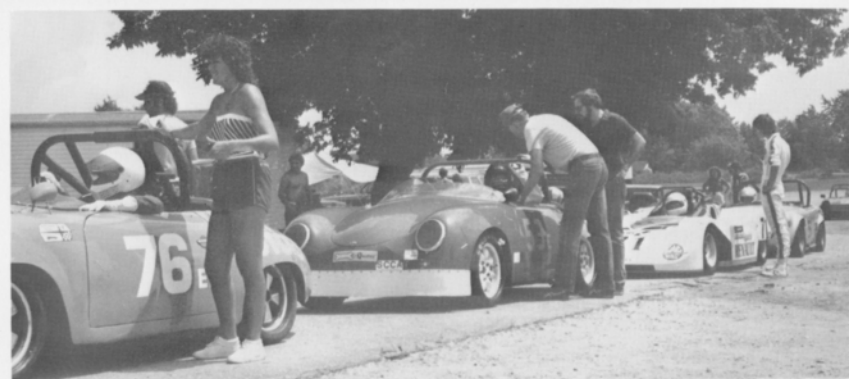
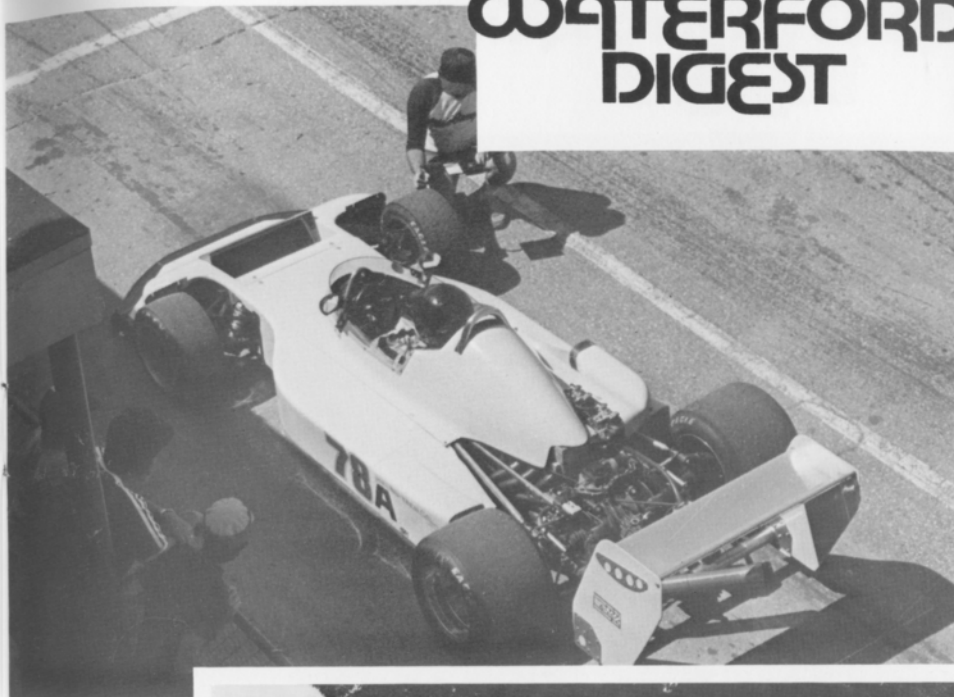
Racing into the future. 



PHOTOS BY AL BIZER



TURN 6 - CORNER WORKER



PHOTOS BY AL BIZER

At your service . . .
with trained technicians.

Trust your Subaru to the experts. Complete bumper-to-bumper service and maintenance.

THE 1986 SUBARU®
Inexpensive. And built to stay that way.



M & W MOTORS, INC.

44756 N. Gratiot, MT CLEMENS, MI 48043 — 465-2661



PHOTOS BY AL BIZER



DON CASTLE

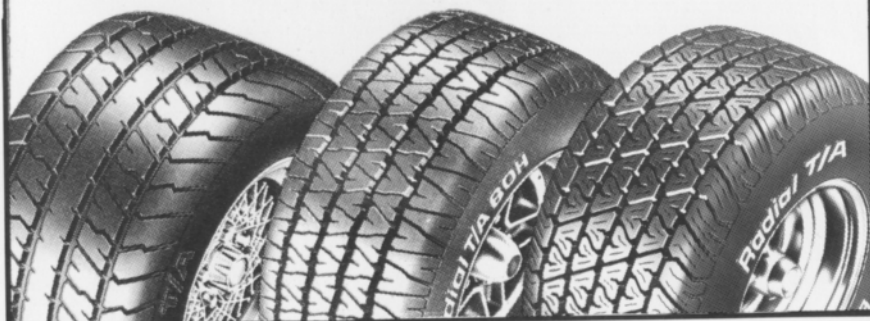


BFGOODRICH T/A RADIALS TAKE ON THE ROAD™

COMP T/A
The Ultimate High-Performance Tire

EURO RADIAL T/A
The Optimal Blend of Handling, Treadwear, Quality and Style

RADIAL T/A
The New Generation of the Original Race-Winning Street Radial



CHOOSE THE RIGHT T/A RADIAL

	HANDLING	WET & DRY TRACTION	TREADWEAR	RIDE	SPEED RATING	SIDEWALL
COMP T/A The Ultimate High-Performance Tire	■	■	■	■	V OVER 130 MPH	RBL*
EURO RADIAL T/A The Optimal Blend of Handling, Treadwear, Quality and Style	■	■	■	■	H UP TO 130 MPH	RWL RBL*
RADIAL T/A The New Generation of the Original Race-Winning Street Radial	■	■	■	■	S UP TO 112 MPH	RWL RBL*

GOOD VERY GOOD EXCELLENT

*RWL: Raised White Letters
RBL: Raised Black Letters

BFGoodrich

Crankshaft Craftsmen Inc.



CRANKSHAFT GRINDING
CAMSHAFT GRINDING
CRANKSHAFT WELDING
POLISHING STRAIGHTENING
HIGH PERFORMANCE WORK
BEARINGS AVAILABLE

QUALITY BEFORE QUANTITY

RUSS TAYLOR - PRESIDENT

(366-0140)

2957 JEROME • EAST OF I-75 • DETROIT

THINK WINK

CARS & TRUCKS



Satisfying Car Buyers For Over 42 Years

BILL WINK CHEVROLET
10700 FORD RD., BET. WYOMING & SCHAEFER
DEARBORN, MICHIGAN



582-5400

"KEEP THAT GREAT GM FEELING WITH GENUINE GM PARTS"



AUTOMETRIC BODY SHOPS

American .. Import



818 N. Main
Royal Oak, MI
398-0200

490 S. Telegraph
Pontiac, MI 48053
332-0600

8645 E. 10 Mile
Centerline, MI
757-7491

24465 Gratiot
East Detroit, MI
774-3455



689-4940

COMPLETE REPAIR SERVICE

PIRELLI & MICHELIN TIRES

OFFICIAL AET TEST
AET TEST FREE WITH
NORMAL MAINTENANCE
SERVICE

- MERCEDES BENZ
- PORSCHE
- VOLKSWAGEN
- AUDI
- B-M-W

1725 E. MAPLE RD (15 MILE) TROY
1 BLOCK EAST OF I-75



FOREIGN AUTOMOTIVE SUPPLY, LTD.



Known for our LOW, LOW PRICES

OEM QUALITY PARTS • LARGE INVENTORY • REPAIR MANUALS
HIGH PERFORMANCE LIGHTS • BOSCH • UPS DAILY

Hours to serve you:
Weekdays: 8:30-7:30
Saturdays: 9:00-5:00
SUNDAYS: 11:00-3:00

380 West 11 Mile
Madison Heights
11 Mile I-696

QUESTIONS? 542-6150



Quartz Euro Code
Lighting by
MARCHALL,
HELLA

Exhaust Systems
by ANSA

Suspension by
KYB,
SUSPENSION
TECHNIQUES,
ADDCO

Racing Equipment
by BELL,
YANKEE

Rollbars, Air Dams,
Sports Car Apparel



Accessory
House inc.

313-548-4488

23257 Woodward

Ferndale mi. 48220

VAST SELECTION OF
IMPORT AUTO ADORNMENTS
WORLD'S FINEST MANUFACTURERS
FOR THE DISCRIMINATING DRIVER

Miller
MADE THE AMERICAN WAY

OFFICIAL BEER SPONSOR
WATERFORD HILLS ROAD RACING
POWERS DISTRIBUTING CO., INC.
2000 PONTIAC DRIVE
PONTIAC, MICHIGAN 48053
682-2010

LOOKING back
with Bizer May 1965



A VW SEEKS A NEW WAY TO TURN 3



????

**Beck's-ULTRA
HIGH PERFORMANCE**

7000 SCHAEFER ■ DEARBORN ■ MICH. 48126
 (313) 846-2600
 (800) 482-9381 (Mich. toll free)

TIRES

GOODYEAR

BF Goodrich

YOKOHAMA

PIRELLI

**BF Goodrich
RACE TIRE PROGRAM**

SHOCKS



10% DISCOUNT TO TACA MEMBERS
 MAJOR CREDIT CARDS ACCEPTED

WHEELS

BBS

GOTTA

**weds
TURBO WHEELS**

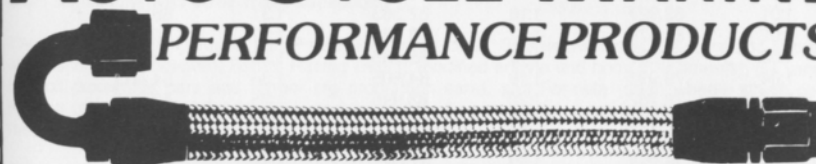
ENKEI

centra CENTRA

**Epsilon
ROAD WHEELS**



**AUTO-CYCLE-MARINE
PERFORMANCE PRODUCTS**



"THE LARGEST INVENTORY IN THE MIDWEST"
 HOSE * FITTINGS * ADAPTERS

Aeroquip
 high performance hose and fittings

(313) 280-1171

EARL'S
 PERFORMANCE PRODUCTS

4940 Delemere, Royal Oak, MI 48073

Peter Betrus, Jr.

Catalog \$2

Thomas J. Betrus

**Hoosier[®]
RACING TIRES**

JAMALC RACING

(517) 223-8704

**John
Morris**

**Al
Ciaramitaro**

Average Lap Speed

Min/Sec	MPH	Min/Sec	MPH	Min/Sec	MPH
1:00	85.326	1:15	68.261	1:30	56.884
1:01	83.927	1:16	67.363	1:31	56.259
1:02	82.574	1:17	66.488	1:32	55.647
1:03	81.263	1:18	65.635	1:33	55.041
1:04	79.993	1:19	64.805	1:34	54.463
1:05	78.762	1:20	63.995	1:35	53.890
1:06	77.569	1:21	63.204	1:36	53.329
1:07	76.411	1:22	62.434	1:37	52.779
1:08	75.288	1:23	61.681	1:38	52.240
1:09	74.197	1:24	60.947	1:39	51.713
1:10	73.137	1:25	60.230	1:40	51.196
1:11	72.106	1:26	59.530	1:41	50.689
1:12	71.105	1:27	58.846	1:42	50.192
1:13	70.131	1:28	58.178	1:43	49.704
1:14	69.183	1:29	57.523	1:44	49.227

The Waterford Hills Road Course is 1.4221 miles long (7,509 ft. center line of track). To determine the speed of any individual car, time it for one complete lap and read off the speed from this table.

Class Records

ASR	Ed Murray	Chevron	1:10.9	9/81
CSR	Evan MacDonald	M-2	1:10.5	9/78
DSR	Ed Murray	Jeddi	1:12.8	9/85
S/2	Larry Campbell	Lola	1:11.5	9/79
SREN	Dave Finch	SPT Renault	1:21.3	6/84
EP	Lou Livengood	Porsche 356	1:16.3	6/80
FP	Barry Hartzel	MG Midget	1:16.2	7/78
GP	Kirk Carlson	MG Midget	1:17.0	8/81
HP	Paul Cameron	Sprite	1:20.4	7/78
GT1	Don Sak	Corvette	1:13.2	5/86
GT2				
GT3	Craig Allen	Lotus Elan	1:16.4	9/83
GT4	Jerry Morlewski	Fiat 124	1:18.7	9/85
GT5	Ted Wollesen	Mini Cooper	1:19.2	9/85
ITA	Dean Voltmer	Mustang II	1:30.9	5/86
ITB	Ray Krom	Scirocco	1:28.8	9/85
ITC	Dave Vestrand	Fiesta	1:32.6	8/85
ITS	John Heeney	Datsun 280Z	1:26.2	5/86
SSGT	D.J. Fazckas	Porsche Turbo	1:22.7	5/86
SSA	Bill Bayley	Mustang	1:26.2	6/85
SSB	Ron Miller	Honda CRX SI	1:27.0	5/86
SSC	Ray Krom	VW-GTI	1:28.8	5/86
**FA	Andy Falbo	March	1:06.1	8/83
FC	Jay Novak	Novakar	1:09.3	9/84
FF	Vince Muzzin	Royale	1:09.4	6/78
FFR	Mark Davidson	Crossle 32	1:17.0	5/84
F4	Stuart Lamont	Xpit	1:12.5	7/83
FV	Lee McLeod	Lynx	1:15.7	7/81
F440	Jay Novak	Epee	1:14.8	9/85

**track record

Racing Classes

To insure fairness in competition, all road racing cars are grouped into racing classes by the Sports Car Club of America in its General Competition Rulebook (GCR). Waterford Hills Road Racing observes the GCR regulations with some minor exceptions.

The five Competition groups are: Production (sport cars), Showroom Stock (GT cars and sports cars with minimal modification), Sports Racing (Highly modified engine and body over wheels), GT (enclosed cockpit passenger cars and former big production cars), and Formula (open wheels single cockpit). Racing groups are subdivided into classes of equally competitive cars based upon engine size and handling characteristics.

The cars listed below are representative of their racing classes and include most of those you will see at Waterford Hills.

PRODUCTION

EP	Porsche 356 series, MGB, Opel GT, Porsche 914/4, Triumph TR-4
FP	Saab Sonnet, MG Midget Mk III & IV, Lotus 7, Triumph Spitfire Mk III & IV & 1500
GP	MG Midget Mk I & II, Triumph Spitfire Mk I & II, MGA, Austin Healy Sprite, Fiat X1/9, Fiat 124 Spider, Alfa Romeo, Porsche Coupe
HP	Austin Healy Sprite Mk I & II, Fiat 850, MG Midget 948, Fiat Abarth

SHOWROOM STOCK

SS-GT	New class with current model cars of SSA plus additional modifications allowed
SSA	Mustang Cobra, Mazda RX series, Porsche 924, Capri V-6, Datsun 280Z
SSB	Triumph TR-8, Scirocco, Dodge Colt, Datsun 200SX, Fiat 124
SSC	Fiat X1/9, Pinto, VW Rabbit, Renault LeCar, Mustang 2.3, MGB, Honda Civic, Toyota Corolla, Pontiac Astre

SPORTS RACING

ASR	over 1300 cc but less than 6000 cc
CSR	over 850 cc up to 1600 cc (with restrictions)
DSR	below or equal to 850 cc
S/2000	uses Ford 2000 cc overhead cam engines only

GT CLASSES

GT-1	Corvette, Camaro, Ford Cobra II, Shelby GT-350, Porsche 911 SC, Dodge Aspen
GT-2	Datsun Z series, Mazda RX7, Porsche 914/6 & 924 Turbo, Sunbeam Tiger, Triumph TR-6 & TR-8
GT-3	Opel 1900, Datsun 510 1800, Mustang 2300, Pinto 2000 & 2300, Cosworth Vega
GT-4	Fiat 124 Sports Coupe, Pinto 1600, Toyota Celica, Dodge Colt, Toyota Corolla 1600, Renault LeCar, Datsun 510 1600, Ford Escort/Lynx, VW Rabbit & Scirocco
GT-5	Datsun 200SX, Austin/Morris Mini Cooper, VW 1300, NSU TT, Honda Civic, Fiat 124 1200, Toyota Corolla 1200

FORMULA

FF	Formula Ford — Cortina or Pinto 1600 cc engine, strict weight to engine ratio with driver's weight included in total legal weight, very equal class
FFR	Formula Ford Radial — the cars are the same as the above class except they must use BF goodrich T/A radial tires
FV	Formula Vee — all Volkswagen components, 1200 cc engine, driver's weight included in total legal weight, very competitive class
F/ATLC	Formula Atlantic — choice of engines in over 1100 cc up to 16000 cc range, wings and other modifications allowed, not meant to be an inexpensive race car
F/CNTL	Formula Continental — engine up to 1100 cc, rear wings allowed, combines the modifications of the previous Formula C and Formula Super Vee classes
F440	Formula 440 — utilizes Fuji two-cycle snowmobile engines and drive train, rigid suspension, wings permitted
F4	Formula Four — Canadian class, motorcycle engine power plant, engine size determines weight and transmission allowed

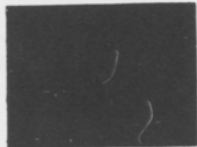
Flags

yellow with red stripes



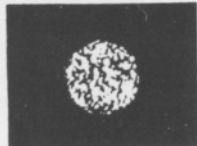
Take care, oil has been spilled or a slippery condition exists somewhere in your vicinity. Look at the track surface.

black



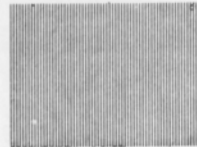
Sloppy or dangerous driving. Complete the lap you are on, stop at the Start/Finish line for consultation with Chief Steward. Waving Black Flag (displayed on all corner stations) means the race is stopped. Slow down immediately and proceed around the track with extreme caution to the pit lane for a re-start.

black with orange ball



(Meatball Black Flag) There is something mechanically wrong with your car. Proceed to your pits at reduced speed.

green



(Or no flag) Course is clear.

yellow



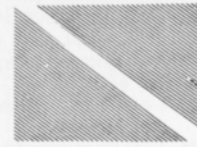
(Stationary) Take care, danger, no passing.
(Waving) Great danger, be prepared to stop, no passing.

red



Waving red (displayed by the Starter only) means the race is stopped, slow down immediately and proceed around the track with extreme caution to the pit lane.

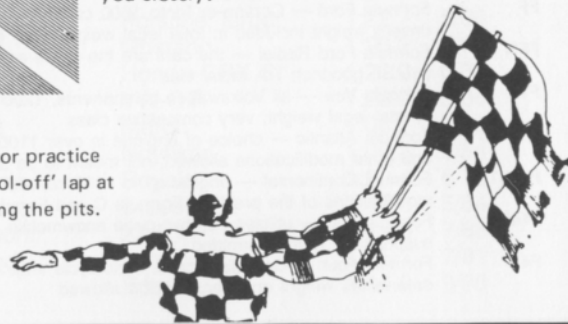
blue with diagonal yellow stripes



(Motionless) Another competitor is following you closely.

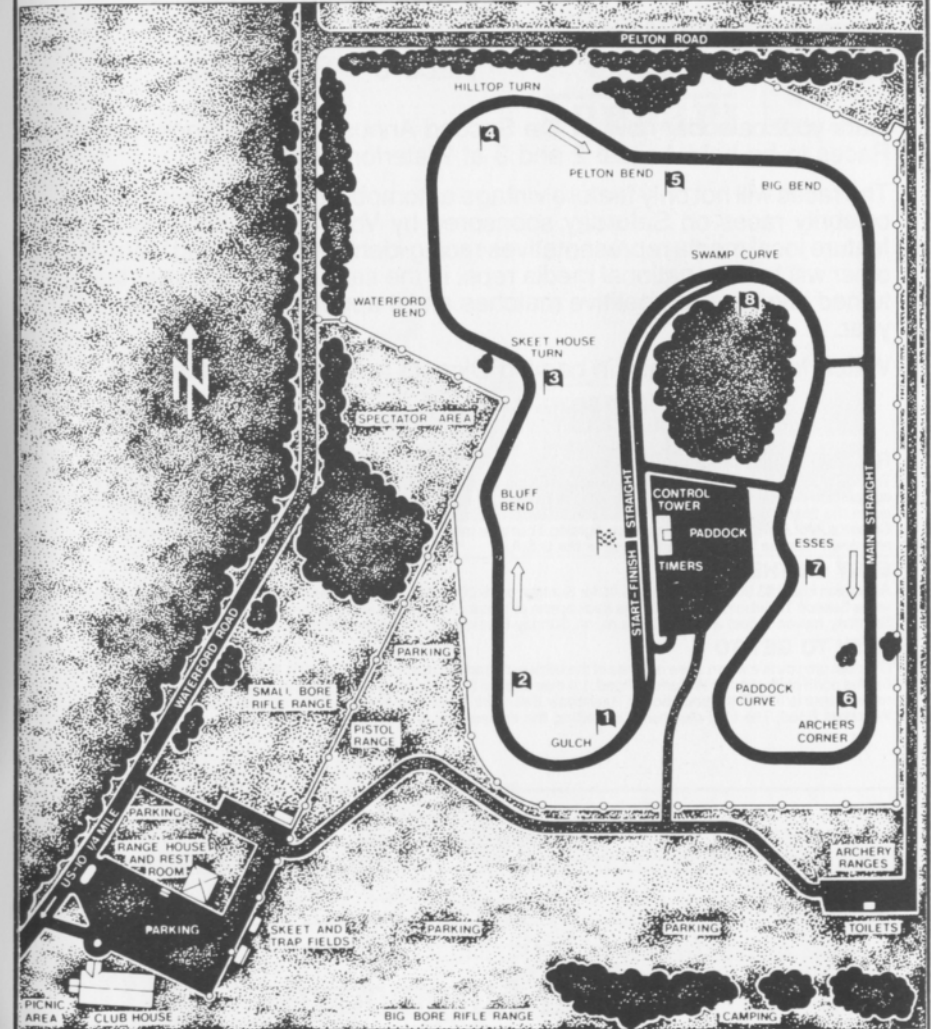
checkered

You have finished the race (or practice session). Complete one "cool-off" lap at reduced speed before entering the pits.



Waterford Hills Course Map

a 1.5 mile asphalt road course at waterford, michigan



Waterford Hills 1986 Road Racing Calendar Schedule

Race 1	May 3-4	Race 4	July 26-27
Race 2	May 24-25	Race 5	Aug. 30-31
Race 3	June 28-29	Race 6	Sept. 27-28

Mark your calendar now for the Second Annual Meadowbrook Historic Races to be held August 2 and 3 at Waterford Hills.

The races will not only feature vintage automobiles, there will also be two celebrity races on Saturday sponsored by Volkswagen. One race will feature local media representatives racing identically equipped VWs, the other will feature national media reps. in the same cars. Last year these turned into very competitive matches and it appears they will again this year.

Watch for more details in coming Digests and plan to be there.

Vintage Race Aug. 2-3

RACING RAIN OR SHINE

The hills of Waterford are being invaded... with an army of sports cars, sedans and formula cars in fierce, wheel to wheel competition... and for 1986 we've assembled the largest field in our 28 year history! Watch over 130 top drivers battle it out in the finest racing machinery from America and Europe. Corvette, Porsche, Datsun. Everything from Capris to Camaros, McLarens to MG's. All together, fighting it out on a mile-and-a-half track with 13 right and left turns that twist up and down hills like no other road course in the U.S.A.

EASY ON THE WALLET

Admission is just \$3.00 for Saturday, \$5.00 for Sunday, or \$6.00 for the entire weekend. Children under 12 are always free and a Season Ticket is only \$20.00. The track opens at 10 a.m. for practice and qualifying. Racing begins at 1:30 p.m. on Saturday (seven races) and at 11:30 a.m. on Sunday (ten races). For more information phone (313) 623-0444.

EASY TO GET TO

Chances are you live within a few minutes of the Midwest's premier road course. The W.H.R.F.I. Race Track is located just 6 miles north of Pontiac on Waterford Road, 1/4 mile each of Dixie Highway (U.S. 10) in Waterford, Michigan. The easiest route to take is I-75 to the southbound Sashabaw Exit. Take Sashabaw south to Pelton Road, then take Pelton west to Waterford Road. The total distance after exiting the expressway is 2-1/2 miles.

New, Used reproduction Parts and Accessories
Custom Paint and Body Repair

BOJAX

HiTech Automotive

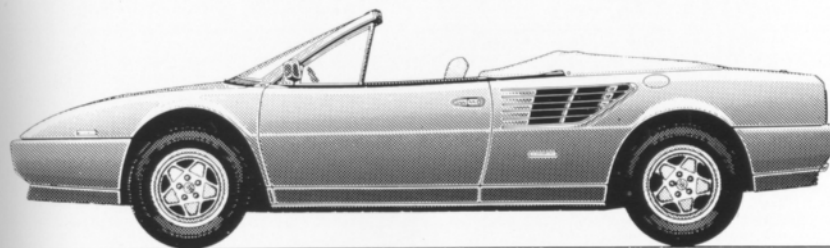
design and fabrication

DOUG FEHAN
BOB FEHAN
313/549-5410

4712 Fernlee
1st Block East of Coolidge, S. of 14
Royal Oak, Michigan 48073

Now...3.2 Mondial Cabriolet

A Ferrari is an investment: in pride, in excellence, in achievement. Protect your investment by purchasing and maintaining your Ferrari through your authorized dealer. Only your authorized Ferrari dealer can provide full factory warranty, service and parts.



The Sports Car Exchange

MICHIGAN'S EXCLUSIVE AUTHORIZED AGENT FOR
FERRARI
14510 MICHIGAN AVE. DEARBORN, MICHIGAN 313-581-6222