

FALVEY
MOTORS

Premier Showing
The Dream is Born

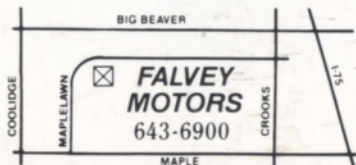
NOW AT
☆ FALVEY MOTORS ☆



**THE ALL NEW
STERLING**

No compromises were made in the design of the 825 SL and none are necessary in its purchase. It features everything you would expect in a car of its class and much you should demand. The Sterling 825 SL comes with standard features that far exceed most option lists. Call today for details.

The only authorized dealer serving Oakland, Macomb, Lapeer & Genesee Counties.

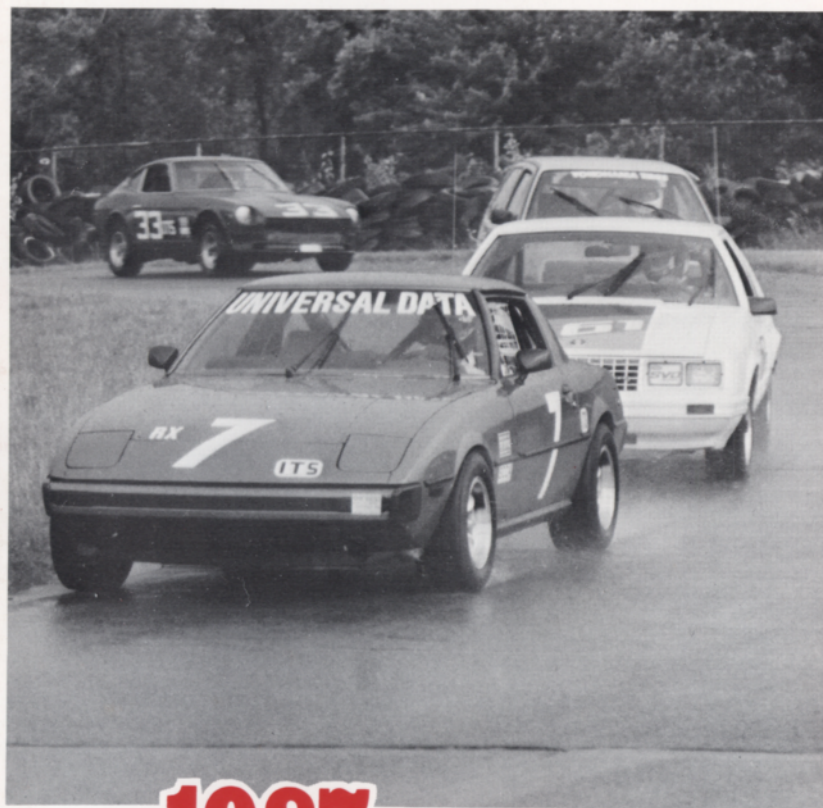


15 Mile (Maple) between Coolidge and Crooks

40 years... Creating the Competition!!

FALVEY

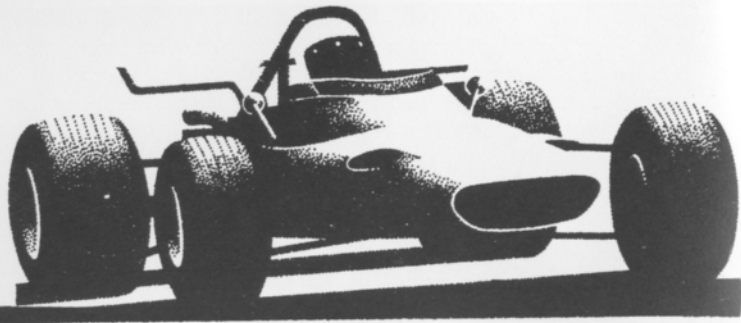
WATERFORD HILLS
ROAD RACING
oakland county sportsmen's club



1987
**WATERFORD
DIGEST**

JULY
\$2.00

WATERFORD DIGEST



The Inside Line

We welcome you to Waterford Hills Road Racing's July race weekend. We have now passed the midpoint of our 29th year. The June meet saw a continuation of the highly competitive pattern set in May. Sit down, kick back and get ready. Several of the class championships are being hotly contested. Should be good racing today!

Speaking of the June meet, several of Saturday's class races were run in the rain. Running in the rain places a special premium on smoothness and concentration. Cars with peaky or high-torque engines become a real handful in the wet. The gas pedal is almost like an on-off switch. The result is often lots of sideways stuff with eyeballs and elbows much in evidence. Other cars with less power and better balance can be driven more smoothly on a wet racing surface. These factors, coupled with varying degrees of wet weather skill and experience among the drivers, produced some interesting finishing orders in some of the races.

With luck, you won't get wet today. But remember, barring a deluge of the 40 days and 40 nights variety, we race rain or shine.

If you have been thinking about getting into road racing but would like to increase your knowledge before making the big jump, involvement as a volunteer may offer the opportunity you seek. The corner workers at the flag stations you see from the spectator area are volunteers. Some are former drivers, others may be future drivers. All, however,

WATERFORD DIGEST

are close to the action, learning, and involved. Don't like standing in the sun? As a timer or scorer you can sit in the shade and learn skills like timing and lap charting. Interested? Leave your name and address with the staff at the boutique. We'd be pleased to have you join us.

HOT TIP: They may not make 'em like they used to, but they do still race them. You can see cars like Cobras, Gran Sport Corvettes, Austin Healys, maybe even a 3-wheeled Morgan, and a variety of this year's featured marque - Lotus. Here! Racing! Next weekend, August 2-3 at the Meadowbrook Historic Races. You are invited.

We also hope to see you at our next meet, August 29-30.

Cal Cortright

Officials

President	Don Burry
Secretary	Burck Grosse
Vice President	Dave Shook
Director of Racing	Bernie Fling
Race Coordinator	Dave Hinman
Chief Steward	Barb Kitch
Asst Chief	Eddie Atkinson
	Bill Tann
Chief of Flags & Communications	Willy Perez
Chief Registrar	Carol Humphreys
Chief of Safety	Blackie Meyers
Chief of Timing & Scoring	Peggy Krom
Chief Starter	Hal Goff
Chief of Tech	Dave Gernaey
Stewards of the Meet	Peter Quenet
	Joe Prato
	Don Sak
	Hugo Carlson
	Gary Ray
Licensing Chairman	Ray Krom
Membership Chairman	Diane Wollesen
Trophy Chairman	Cynthia Kempton
Grid Marshall	Emily Whitehead
Paddock Marshall	Bob Albo
Course Control	Blackie Meyers
Sound Control	Roger Roeske
Director of Facilities	Jim McIntosh
Controller	Danny MacDonald
Newsletter Editor	Jack Pringle

WATERFORD DIGEST



Of Special Interest:
 SIDEMOUNT HEADERS
 ROLL BARS
 KONI SHOCKS
 SWAY BARS
 DRIVING LIGHTS
 COMP. SEAT BELTS
 AND HARNESES
 RACING CAMS
 LAKEWOOD

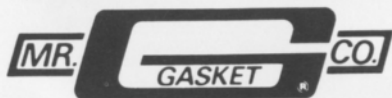


HOLLEY CARBS
 TRANS AM OIL PANS
 RACING OIL
 HOOKER HEADERS
 HURST
 MALLORY & ACCEL
 IGNITION SYSTEMS



Redford Speed

26577 GRAND RIVER
 532-2050 or 532-6223
 10-8 MON-FRI 10-6 SAT



6 DON CASTLE

WATERFORD DIGEST

ANOTHER WINNER!



EF Hutton

WATERFORD DIGEST

At your service . . .
with trained technicians.

Trust your Subaru to the experts. Complete bumper-to-bumper service and maintenance.



THE 1986 SUBARU®
Inexpensive. And built to stay that way.

M & W MOTORS, INC.

44756 N. Gratiot, MT CLEMENS, MI 48043 — 465-2661

CADILLAC OVERALL SUPPLY CO.

RENTAL UNIFORMS - SHOP TOWELS
DUST CONTROL - ENTRANCE MATS

PHONE (313) 366-7700

TONY KUNERT
SALES REPRESENTATIVE

6401 E. DAVISON
DETROIT, MICH.

WILLIAM A. KIEFER
President

SCOTT W. KIEFER
Vice-President

Micro Gauge, Inc.

**CNC Machining
O.D. Grinding
Precision Honing**

(517) 546-7036

5910 E. Grand River
Howell, MI 48843

WATERFORD DIGEST

OUR CARS PERFORM.
AND SO DO WE.



Peter Cook, our general manager, certainly performs. He and co-driver Terry Abbott, our service shop foreman, compete in the grueling showroom stock endurance races both with I.M.S.A. and S.C.C.A. Six to 24 hours of non stop racing in Bill Cook's Porsche 944.

Ed Geiser, our service and racing director, performs too. With a team of factory-trained master technicians dedicated to maintaining your Porsche or Audi as long as you own it. Our master technicians receive the best training both with the factory and at the race track. Our award winning parts team, led by Steve Shepherd, performs to make sure that the parts you need are here when you need them.

At Bill Cook Imported Cars, we know our cars perform, and we expect the same of ourselves.



"NOBODY EVEN COMES CLOSE"



BILL COOK
IMPORTED CARS, INC.

37901 GRAND RIVER AVE.
FARMINGTON HILLS, MI 48024

471-0044

Sales & Leasing

WATERFORD DIGEST

SATURDAY CLASS RACES JUNE 27-28, 1987 CLASS WINNERS

CLASS	DRIVER	CAR	BEST LAP
RACE 1			
FV	STEVE MCNAMARA	LYNX B - BLUE	1:16.05
F440	DON GIBBONEY	NOVAKAR J - WHITE	1:17.14
RACE 2			
ITS	GARY RAY	MAZDA RX7 - BRONZE	1:38.35
ITA	DEAN VOLTMER	MUSTANG II - BLUE	1:44.17
ITB	MICHAEL JONES	MUSTANG - WH/BLU	1:38.41
ITC	CAL CORTRIGHT	FORD FIESTA-ORANGE	1:41.33
SSX	RYAN BAYLEY	SPRINT - WHITE	1:52.36
SSGT	R.J. APRILL	MUSTANG - RED	1:40.16
SSA	LANCE OLSON	FIREBIRD - WHITE/BLK	1:41.04
SSB	MIKE MEIMAR	DODGE CHARGE - SLV/BL	1:50.09
SSC	RAY KROM	VW GTI - SILVER	1:37.71
RACE 3			
SREN	STEVE IVES	SP RENAULT - YEL/WH	1:41.08
GP	BOB ANDERSON	SPITFIRE - RED	1:41.23
GT4	JERRY MORLEWSKI	FIAT 124 - RED	1:47.42
GT5	A. J. SZILAGYI	HONDA CIVIC - YELLOW	1:43.26
RACE 4			
S2	DAN O'CONNER	LOLA 596 - WHITE	1:26.99
EP	SKIP FROH	PORSCHE - BLUE	1:40.56
GTX	HAL PRINGLE	CORVETTE-YELLOW/WHT	1:44.61
GT1	DAVE BUIST	FIERO - SILVER	1:45.63
GT3	GLENN WHITTAKER	PINTO - BLUE	1:48.66
RACE 5			
FF	MARK DAVISON	SWIFT - RED	1:25.54
CFF	DON KITCH	CROSSLE 32F - RED/YEL	1:25.80
F4	DENNIS WHITEHEAD	VIXON - RED/WH/BLUE	1:36.53

SUNDAY CLASS RACES JUNE 27-28, 1987 CLASS WINNERS

CLASS	DRIVER	CAR	BEST LAP
RACE 1			
FV	STEVE MCNAMARA	LYNX B - BLUE	1:17.33
F440	LARRY DUPUIS	NOVAKAR - RED	1:21.58
RACE 2			
ITS	GARY RAY	MAZDA RX7 - BRONZE	1:25.81
ITA	GREGORY MANKIN	MAZDA RX2 - BLUE	1:28.27
ITB	MICHAEL JONES	MUSTANG - WH/BLU	1:28.22
ITC	ROBIN BURNETTE	FIESTA - WHITE	1:29.96
SSX	MARY WOLLESEN	CHEVY SPRINT-RED/WH	1:32.09
SSGT	MIKE ST. LOUIS	IROC Z - YELLOW	1:26.08

WATERFORD DIGEST

SSA	LANCE OLSON	FIREBIRD - WHITE/BLK	1:29.21
SSB	MIKE MEIMAR	DODGE CHARGE - SLV/BL	1:30.96
SSC	RAY KROM	VW GTI - SILVER	1:28.30

RACE 3

SREN	MICHAEL NEAL	RENAULT-RED/WH/BL	1:21.42
GP	BOB ANDERSON	SPITFIRE - RED	1:22.51
GT4	JERRY MORLEWSKI	FIAT 124 - RED	1:23.58
GT5	TED WOLLESEN	MINI COOPER - YELLOW	1:20.79

RACE 4

S2	STAN KASIEWICZ	SWIFT DB2 - YELLOW	1:12.90
EP	SKIP FROH	PORSCHE - BLUE	1:18.06
GTX	HAL PRINGLE	CORVETTE-YELLOW/WHT	1:21.78
GT1	DAVE BUIST	FIERO - SILVER	1:15.66
GT3	TIM POTT	PORSCHE 914 - RED	1:21.74

RACE 5

FF	MARK DAVISON	SWIFT - RED	1:12.37
CFF	DON KITCH	CROSSLE 32F - RED/YEL	1:13.54
FFR	BILL SULTZE	MERLYN - RED	1:23.96
F4	GRAEME BATES	XPIT - BLACK	1:19.91

FEATURE RACES JUNE 27-28, 1987 TOP FIVE FINISHERS

CLASS	DRIVER	CAR	BEST LAP
FEATURE 1			
F440	DON GIBBONEY	NOVAKAR J - WHITE	1:18.02
FV	LARRY BRADLEY	BRADLYNX - INDIGO	1:17.14
FV	DAVID SHELBO	ZINK C4 - BLACK	1:19.65
FV	DAVID KLOCKOWSKI	CARACAL - RED	1:20.00
F440	LARRY DUPUIS	NOVAKAR - RED	1:22.26
FEATURE 2			
GP	PAT NOWAK	SPRITE - BLACK	1:21.15
GT5	TED WOLLESEN	MINI COOPER - YELLOW	1:22.05
GP	BOB ANDERSON	SPITFIRE - RED	1:22.68
SSGT	MIKE ST. LOUIS	IROC Z - YELLOW	1:24.93
ITS	GARY RAY	MAZDA RX7 - BRONZE	1:25.41
FEATURE 3			
S2	CURT CATALLO	LOLA 596 - RED	1:15.16
GT1	DOUG BUIST	CORVETTE - RD/BLK/SIL	1:15.32
S2	JOE O'CONNOR	LOLA 596 - WHITE	1:16.57
GT3	TIM POTT	PORSCHE 914 - RED	1:20.62
GT1	DAVID PATTON	CORVETTE - BLACK	1:20.64
FEATURE 4			
FF	KEVIN WEST	REYNARD - RED	1:13.06
FF	KEITH MUNROE	VAN DIEMAN RF83 - GR	1:13.24
CFF	DON KITCH	CROSSLE 32F - RED/YEL	1:13.95
FF	GRANT STARLING	TITAN	1:14.10
FF	LEWIS COOPER III	VAN DIEMAN - RED	1:13.49



PHOTOS BY AL BIZER

BILL COOK mazda

37911 Grand River at 10 Mile Rd.
Farmington Hills, MI 471-0800



BILL COOK mazda

"Where Excellence is the Standard, Not the Option"

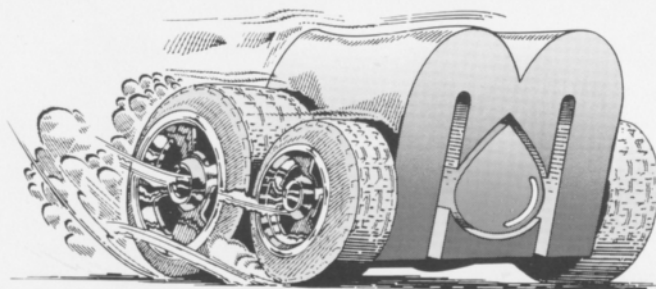
WATERFORD DIGEST

PHOTOS BY AL BIZER



WATERFORD DIGEST

AL BIZER



See you in the winner's circle!

Give your car the competitive edge, with Mid-States Petroleum, the official supplier of Union 76 racing gasoline at Waterford Hills. We also carry CAM-2 and Howell racing gasolines, racing methanol, motor oils, and lubricants, that will have you leading the pack. Call Mid-States today and get the edge!



Mid-States Petroleum, Inc.
P.O. Box 186 • Troy, Michigan 48099
In Michigan, call 1-800-482-2611
For rest of USA, call 1-800-554-0500

WATERFORD DIGEST

PHOTOS BY DON CASTLE



WATERFORD DIGEST

PHOTOS BY DON CASTLE



Michigan National wants to send you to the '88 Olympic Winter Games!

Carry the Torch, Carry the Card, Carry the Cheques.

Win a fabulous trip for two to Calgary, Canada for the '88 Olympic Winter Games. It's easy to enter.* Between now and August 7, 1987:

- Open a deposit account or apply for a loan,
- Apply for a Michigan Bankard™ VISA,
- Purchase VISA® Travelers Cheques, or
- Open a \$10,000 CD for one year and receive a "Perfect Package" of services.**

VISA®

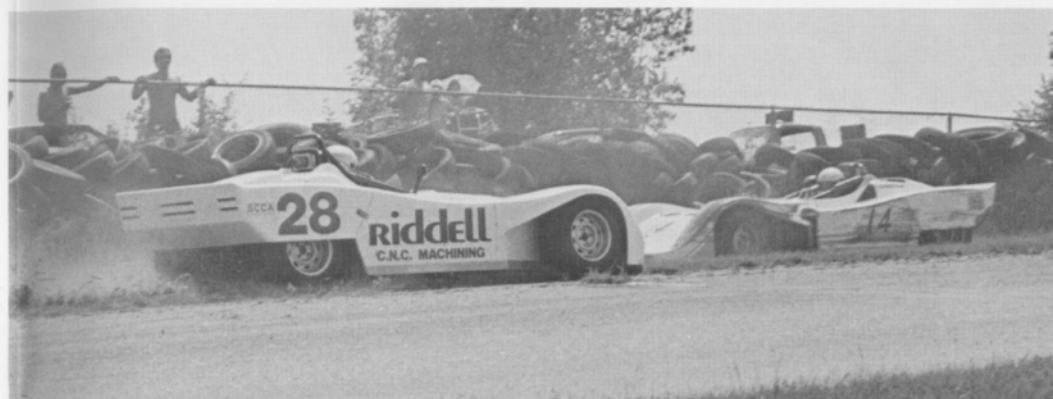
It's everywhere you want to be:



**Michigan
National
Bank**

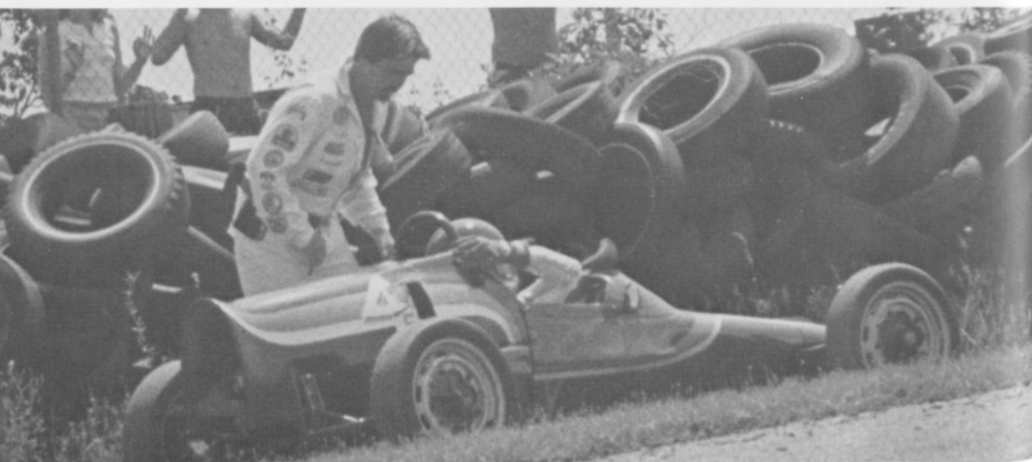
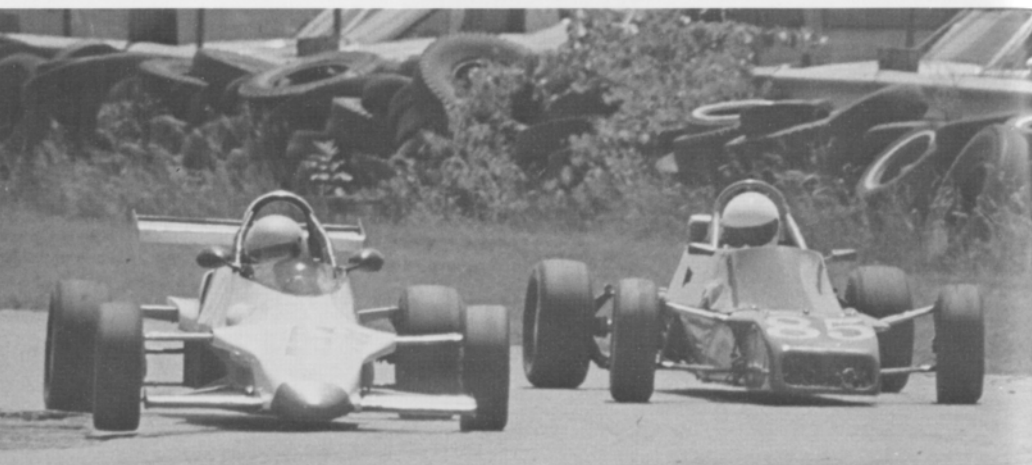
Member FDIC.

*No purchase necessary. Trip details and contest rules available at all Michigan National branch offices. **"Perfect Package" includes (among other services) unlimited, commission-free domestic VISA Travelers Cheques and a year's free VISA membership. Ask us for details.



WATERFORD DIGEST

PHOTOS BY DON CASTLE



WATERFORD DIGEST

KAMEI • BOGE • LOBRO • LEISTRITZ • BILSTEIN • HELLA • BOSCH • RONAL



IMPORT SERVICE & PARTS

DRIVING SHOULD BE FUN!

So you love hot cars? We do too. We're Motorheads. We sell Bilstein, Hella, Neuspeed, BBS, Ronal; if it makes the car more fun to drive, we're into it. We also offer expert service and installation.

Munk's wants to be your source for the best in performance at fair prices. Call us, or stop by, and we'll show you just how much fun driving can be.

Dedicated to doing it right for over 15 years!

3080 W. Huron (M-59)
Waterford Township
681-8081
1803 Orchard Lake Rd.
Bloomfield Township
335-5424

KAMEI • BOGE • LOBRO • LEISTRITZ • BILSTEIN • HELLA • BOSCH • RONAL



WATERFORD DIGEST

PHOTOS BY DON CASTLE



WATERFORD DIGEST

PHOTOS BY AL BIZER



BFGOODRICH T/A[®] RADIALS TAKE ON THE ROAD™

COMP T/A

The Ultimate High-Performance Tire

EURO RADIAL T/A

The Optimal Blend of Handling, Treadwear, Quality and Style

RADIAL T/A

The New Generation of the Original Race-Winning Street Radial



CHOOSE THE RIGHT T/A[®] RADIAL

	HANDLING	WET & DRY TRACTION	TREADWEAR	RIDE	SPEED RATING	SIDEWALL
COMP T/A The Ultimate High-Performance Tire	EXCELLENT	EXCELLENT	VERY GOOD	GOOD	V OVER 130 MPH	RBL*
EURO RADIAL T/A The Optimal Blend of Handling, Treadwear, Quality and Style	VERY GOOD	EXCELLENT	EXCELLENT	VERY GOOD	H UP TO 130 MPH	RWL RBL*
RADIAL T/A The New Generation of the Original Race-Winning Street Radial	VERY GOOD	EXCELLENT	EXCELLENT	EXCELLENT	S UP TO 112 MPH	RWL RBL*

GOOD VERY GOOD EXCELLENT *RWL: Raised White Letters
RBL: Raised Black Letters

BFGoodrich

Crankshaft Craftsmen Inc.



CRANKSHAFT GRINDING
CAMSHAFT GRINDING
CRANKSHAFT WELDING
POLISHING STRAIGHTENING
HIGH PERFORMANCE WORK
BEARINGS AVAILABLE

QUALITY BEFORE QUANTITY

RUSS TAYLOR - PRESIDENT

(366-0140)

2957 JEROME • EAST OF I-75 • DETROIT

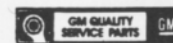
THINK WINK

CARS & TRUCKS



Satisfying Car Buyers For Over 42 Years

BILL WINK CHEVROLET
10700 FORD RD., BET. WYOMING & SCHAEFER
DEARBORN, MICHIGAN



582-5400

"KEEP THAT GREAT GM FEELING WITH GENUINE GM PARTS"



AUTOMETRIC BODY SHOPS

American .. Import



818 N. Main
Royal Oak, MI
398-0200

490 S. Telegraph
Pontiac, MI 48053
332-0600

8645 E. 10 Mile
Centerline, MI
757-7491

24465 Gratiot
East Detroit, MI
774-3455



689-4940

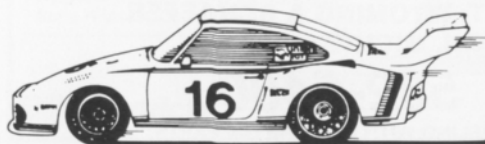
COMPLETE REPAIR SERVICE

PIRELLI & MICHELIN TIRES

OFFICIAL AET TEST
AET TEST FREE WITH
NORMAL MAINTENANCE
SERVICE

- MERCEDES BENZ
- PORSCHE
- VOLKSWAGEN
- AUDI
- B-M-W

1725 E. MAPLE RD (15 MILE) TROY
1 BLOCK EAST OF I-75



FOREIGN AUTOMOTIVE SUPPLY, LTD.



Known for our LOW, LOW PRICES

OEM QUALITY PARTS • LARGE INVENTORY • REPAIR MANUALS
HIGH PERFORMANCE LIGHTS • BOSCH • UPS DAILY

Hours to serve you:
Weekdays: 8:30-7:30
Saturdays: 9:00-5:00
SUNDAYS: 11:00-3:00

380 West 11 Mile
Madison Heights
11 Mile I-696
John R.

QUESTIONS? 542-6150



Quartz Euro Code
Lighting by
MARCHALL,
HELLA

Exhaust Systems
by ANSA

Suspension by
KYB,
SUSPENSION
TECHNIQUES,
ADDCO

Racing Equipment
by BELL,
YANKEE

Rollbars, Air Dams,
Sports Car Apparel



Accessory
House inc.

313-548-4488

23257 Woodward

Ferndale mi. 48220

VAST SELECTION OF
IMPORT AUTO ADORNMENTS
WORLD'S FINEST MANUFACTURERS
FOR THE DISCRIMINATING DRIVER

WATERFORD DIGEST

PHOTOS BY DON CASTLE



WATERFORD DIGEST

LOOKING back

with Bizer Aug. 2+3, 1986



*Vintage
Races*



Beck's-ULTRA HIGH PERFORMANCE

7000 SCHAEFER ■ DEARBORN ■ MICH. 48126
(313) 846-2600
(800) 482-9381 [Mich. toll free]

TIRES

GOODYEAR

BF Goodrich

YOKOHAMA

PIRELLI

BF Goodrich
RACE TIRE PROGRAM

SHOCKS



10% DISCOUNT TO TACA MEMBERS
MAJOR CREDIT CARDS ACCEPTED

WHEELS

BBS

GOTTA

weds
TURBO WHEELS

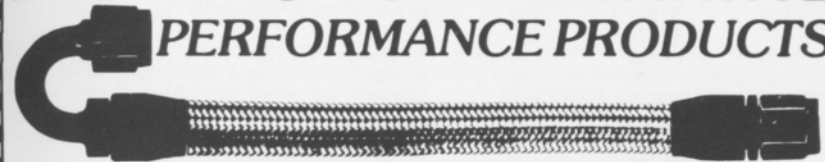
ENKEI

centra CENTRA

Epsilon
ROAD WHEELS



AUTO-CYCLE-MARINE PERFORMANCE PRODUCTS



"THE LARGEST INVENTORY IN THE MIDWEST"
HOSE ★ FITTINGS ★ ADAPTERS

(313) 280-1171

4940 Delemere, Royal Oak, MI 48073

Peter Betrus, Jr.

Catalog \$2

EARL'S
PERFORMANCE PRODUCTS

Thomas J. Betrus

Hoosier[®]

RACING TIRES

JAMALC RACING

(517) 223-8704

John
Morris

Al
Ciaramitaro

WATERFORD DIGEST

Average Lap Speed

Min/Sec	MPH	Min/Sec	MPH	Min/Sec	MPH
1:00	85.326	1:15	68.261	1:30	56.884
1:01	83.927	1:16	67.363	1:31	56.259
1:02	82.574	1:17	66.488	1:32	55.647
1:03	81.263	1:18	65.635	1:33	55.041
1:04	79.993	1:19	64.805	1:34	54.463
1:05	78.762	1:20	63.995	1:35	53.890
1:06	77.569	1:21	63.204	1:36	53.329
1:07	76.411	1:22	62.434	1:37	52.779
1:08	75.288	1:23	61.681	1:38	52.240
1:09	74.197	1:24	60.947	1:39	51.713
1:10	73.137	1:25	60.230	1:40	51.196
1:11	72.106	1:26	59.530	1:41	50.689
1:12	71.105	1:27	58.846	1:42	50.192
1:13	70.131	1:28	58.176	1:43	49.704
1:14	69.183	1:29	57.523	1:44	49.227

The Waterford Hills Road Course is 1.4221 miles long (7,509 ft. center line of track). To determine the speed of any individual car, time it for one complete lap and read off the speed from this table.

Class Records JUNE 27-28, 1987

CLASS	DRIVER	CAR	DATE	LAP TIME
FA	ANDY FALBO	MARCH	8/83	1:06.10
FC	JAY NOVAK		9/84	1:09.30
FF	VINCE MUZZIN	ROYALE	6/78	1:09.40
CFF	JEFF HORTON	CROSSLE	5/87	1:14.10
FFR	MARK DAVIDSON	CROSSLE 32	5/84	1:17.00
F4	STUART LAMONT	XPIT	7/83	1:12.50
FV	LEE MCLEOD	LYNX	7/81	1:15.70
F440	JAY NOVAK	EPEE	9/85	1:14.80
ASR	ED MURRAY	CHEVRON	9/81	1:10.90
CSR	EVAN MACDONALD	M-2	9/78	1:10.50
DSR	ED MURRAY	JEDDI	9/85	1:12.80
S2	LARRY CAMPBELL	LOLA	9/79	1:11.50
SREN	TOM VANCAMP	SPT RENAULT	5/87	1:20.30
EP	LOU LIVENGOOD	PORSCHE 356	6/80	1:16.30
FP	BARRY HARTZEL	MG MIDGET	7/78	1:16.20
GP	KIRK CARLSON	MG MIDGET	8/81	1:17.00
HP	PAUL CAMERON	SPRITE	7/78	1:20.40
GT1	DON SAK	CORVETTE	5/86	1:13.20
GT3	CRAIG ALLEN	LOTUS ELAN	9/83	1:16.40
GT4	JERRY MORLEWSKI	FIAT 124	9/85	1:18.70
GT5	TED WOLLESEN	MINI COOPER	9/85	1:19.20
ITS	GARY RAY	MAZDA RX-7	6/87	1:25.80
ITA	GREG MANKIN	MAZDA RX2	6/87	1:28.30
ITB	MIKE JONES	MUSTANG	6/87	1:28.20
ITC	ROBIN BURNETTE	FIESTA	5/87	1:29.30
RCUP	CHUCK LITTLE	RENAULT ENCORE	7/85	1:29.20
SSGT	BOBBY FEHAN	CORVETTE	8/86	1:21.60
SSA	BILL BAYLEY	MUSTANG	6/85	1:26.20
SSB	RON MILLER	HONDA CRX Si	5/86	1:27.00
SSC	RAY KROM	VW GOLF GTI	9/86	1:27.90

WATERFORD DIGEST

Racing Classes

To insure fairness in competition, all road racing cars are grouped into racing classes by the Sports Car Club of America in its General Competition Rulebook (GCR). Waterford Hills Road Racing observes the GCR regulations with some minor exceptions.

The five Competition groups are: Production (sport cars), Showroom Stock (GT cars and sports cars with minimal modification), Sports Racing (Highly modified engine and body over wheels), GT (enclosed cockpit passenger cars and former big production cars), and Formula (open wheels single cockpit). Racing groups are subdivided into classes of equally competitive cars based upon engine size and handling characteristics.

The cars listed below are representative of their racing classes and include most of those you will see at Waterford Hills.

PRODUCTION

EP	Porsche 356 series, MGB, Opel GT, Porsche 914/4, Triumph TR-4
FP	Saab Sonnet, MG Midget Mk III & IV, Lotus 7, Triumph Spitfire Mk III & IV & 1500
GP	MG Midget Mk I & II, Triumph Spitfire Mk I & II, MGA, Austin Healy Sprite, Fiat X1/9, Fiat 124 Spider, Alfa Romeo, Porsche Coupe
HP	Austin Healy Sprite Mk I & II, Fiat 850, MG Midget 948, Fiat Abarth

SHOWROOM STOCK

SS-GT	New class with current model cars of SSA plus additional modifications allowed
SSA	Mustang Cobra, Mazda RX series, Porsche 924, Capri V-6, Datsun 280Z
SSB	Triumph TR-8, Scirocco, Dodge Colt, Datsun 200SX, Fiat 124
SSC	Fiat X1/9, Pinto, VW Rabbit, Renault LeCar, Mustang 2.3, MGB, Honda Civic, Toyota Corolla, Pontiac Astre

SPORTS RACING

ASR	over 1300 cc but less than 6000 cc
CSR	over 850 cc up to 1600 cc (with restrictions)
DSR	below or equal to 850 cc
S/2000	uses Ford 2000 cc overhead cam engines only

GT CLASSES

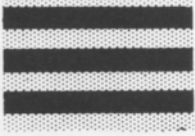
GT-1	Corvette, Camaro, Ford Cobra II, Shelby GT-350, Porsche 911 SC, Dodge Aspen
GT-2	Datsun Z series, Mazda RX7, Porsche 914/6 & 924 Turbo, Sunbeam Tiger, Triumph TR-6 & TR-8
GT-3	Opel 1900, Datsun 510 1800, Mustang 2300, Pinto 2000 & 2300, Cosworth Vega
GT-4	Fiat 124 Sports Coupe, Pinto 1600, Toyota Celica, Dodge Colt, Toyota Corolla 1600, Renault LeCar, Datsun 510 1600, Ford Escort/Lynx, VW Rabbit & Scirocco
GT-5	Datsun 200SX, Austin/Morris Mini Cooper, VW 1300, NSU TT, Honda Civic, Fiat 124 1200, Toyota Corolla 1200

FORMULA

FF	Formula Ford — Cortina or Pinto 1600 cc engine, strict weight to engine ratio with driver's weight included in total legal weight, very equal class
FFR	Formula Ford Radial — the cars are the same as the above class except they must use BF goodrich T/A radial tires
FV	Formula Vee — all Volkswagen components, 1200 cc engine, driver's weight included in total legal weight, very competitive class
F/ATLC	Formula Atlantic — choice of engines in over 1100 cc up to 16000 cc range, wings and other modifications allowed, not meant to be an inexpensive race car
F/CNTL	Formula Continental — engine up to 1100 cc, rear wings allowed, combines the modifications of the previous Formula C and Formula Super Vee classes
F440	Formula 440 — utilizes Fuji two-cycle snowmobile engines and drive train, rigid suspension, wings permitted
F4	Formula Four — Canadian class, motorcycle engine power plant, engine size determines weight and transmission allowed

Flags

yellow with red stripes



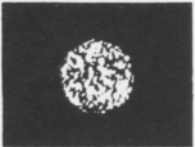
Take care, oil has been spilled or a slippery condition exists somewhere in your vicinity. Look at the track surface.

black



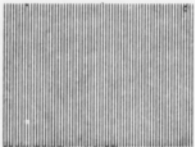
Sloppy or dangerous driving. Complete the lap you are on, stop at the Start/Finish line for consultation with Chief Steward. Waving Black Flag (displayed on all corner stations) means the race is stopped. Slow down immediately and proceed around the track with extreme caution to the pit lane for a re-start.

black with orange ball



(Meatball Black Flag) There is something mechanically wrong with your car. Proceed to your pits at reduced speed.

green



(Or no flag) Course is clear.

yellow



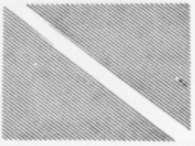
(Stationary) Take care, danger, no passing.
(Waving) Great danger, be prepared to stop, no passing.

red



Waving red (displayed by the Starter only) means the race is stopped, slow down immediately and proceed around the track with extreme caution to the pit lane.

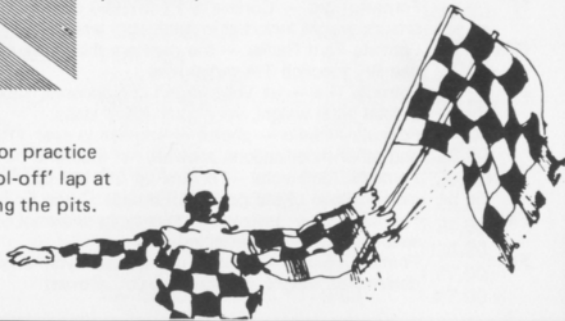
blue with diagonal yellow stripes



(Motionless) Another competitor is following you closely.

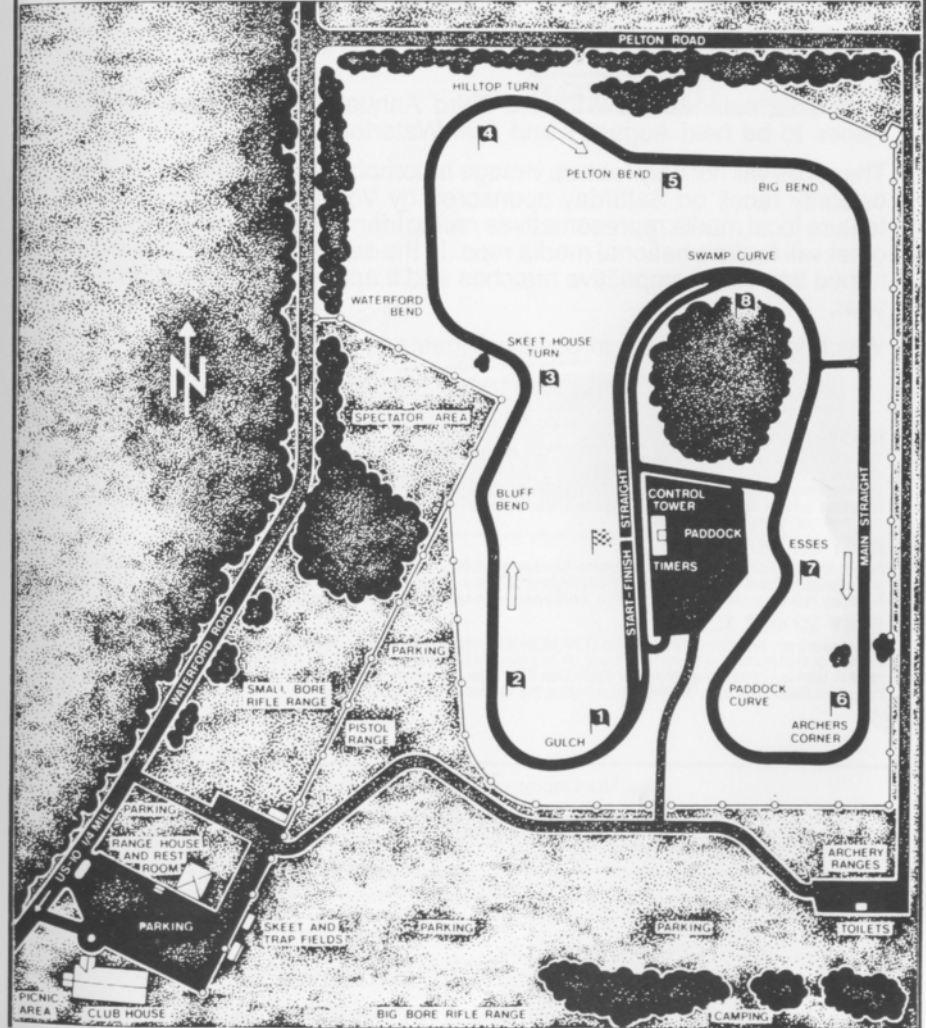
checkered

You have finished the race (or practice session). Complete one "cool-off" lap at reduced speed before entering the pits.



Waterford Hills Course Map

a 1.5 mile asphalt road course at waterford, michigan



WATERFORD DIGEST

Waterford Hills 1987 Road Racing Calendar Schedule

Race 1	May 16-17	Race 4	July 25-26
Race 2	May 30-31	Race 5	Aug. 29-30
Race 3	June 27-28	Race 6	Sept. 26-27

Mark your calendar now for the Third Annual Meadowbrook Historic Races to be held August 1 and 2 at Waterford Hills.

The races will not only feature vintage automobiles, there will also be two celebrity races on Saturday sponsored by Volkswagen. One race will feature local media representatives racing identically equipped VWs, the other will feature national media reps. in the same cars. Last year these turned into very competitive matches and it appears they will again this year.

Watch for more details in coming Digests and plan to be there.

Vintage Race Aug. 1-2

RACING RAIN OR SHINE

The hills of Waterford are being invaded . . . with an army of sports cars, sedans and formula cars in fierce, wheel to wheel competition . . . and for 1987 we've assembled the largest field in our 29 year history! Watch over 130 top drivers battle it out in the finest racing machinery from America and Europe. Corvette, Porsche, Datsun. Everything from Capris to Camaros, McLarens to MG's. All together, fighting it out on a mile-and-a-half track with 13 right and left turns that twist up and down hills like no other road course in the U.S.A.

EASY ON THE WALLET

Admission is just \$3.00 for Saturday, \$5.00 for Sunday, or \$6.00 for the entire weekend. Children under 12 are always free and a Season Ticket is only \$20.00. The track opens at 10 a.m. for practice and qualifying. Racing begins at 1:30 p.m. on Saturday (seven races) and at 11:30 a.m. on Sunday (ten races). For more information phone (313) 623-0444.

EASY TO GET TO

Chances are you live within a few minutes of the Midwest's premier road course. The W.H.R.R.I. Race Track is located just 6 miles north of Pontiac on Waterford Road, 1/4 mile each of Dixie Highway (U.S. 10) in Waterford, Michigan. The easiest route to take is I-75 to the southbound Sashabaw Exit. Take Sashabaw south to Pelton Road, then take Pelton west to Waterford Road. The total distance after exiting the expressway is 2-1/2 miles.

New, Used reproduction Parts and Accessories
Custom Paint and Body Repair

BOJAX

HiTech Automotive

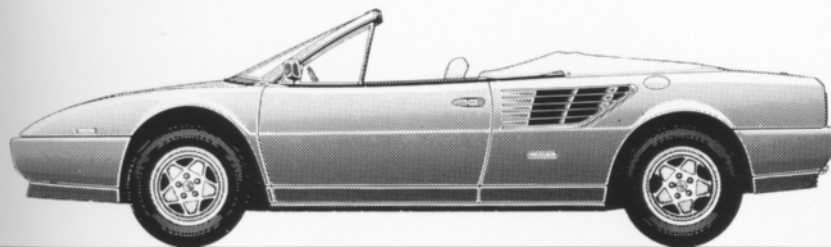
design and fabrication

DOUG FEHAN
BOB FEHAN
313/549-5410

4712 Fernlee
1st Block East of Coolidge, S. of 14
Royal Oak, Michigan 48073

Now...3.2 Mondial Cabriolet

A Ferrari is an investment: in pride, in excellence, in achievement. Protect your investment by purchasing and maintaining your Ferrari through your authorized dealer. Only your authorized Ferrari dealer can provide full factory warranty, service and parts.



The Sports Car Exchange

MICHIGAN'S EXCLUSIVE AUTHORIZED AGENT FOR
FERRARI

14510 MICHIGAN AVE. DEARBORN, MICHIGAN 313-581-6222

THE WATERFORD DIGEST

Published by Waterford Hills Racing Inc., 1987