

FALVEY MOTORS

Premier Showing
The Dream is Born

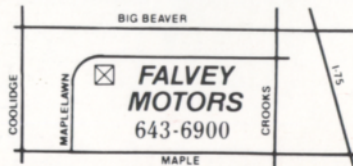
NOW AT
☆ FALVEY MOTORS ☆



THE ALL NEW STERLING

No compromises were made in the design of the 825 SL and none are necessary in its purchase. It features everything you would expect in a car of its class and much you should demand. The Sterling 825 SL comes with standard features that far exceed most option lists. Call today for details.

The only authorized dealer serving Oakland, Macomb, Lapeer & Genesee Counties.



15 Mile (Maple) between Coolidge and Crooks

40 years... Creating the Competition!!

FALVEY

WATERFORD HILLS



ROAD RACING

oakland county
sportsmen's club



1987 WATERFORD DIGEST

JUNE
\$2.00

PACE CAR FURNISHED BY

PAGE TOYOTA



8½ & TELEGRAPH
 SOUTHFIELD, MICH.

352-8580

MICHIGAN'S #1 TOYOTA DEALER
 IN SALES, SERVICE AND BODY REPAIR



WINNER OF THE NATIONAL SERVICE AND
 CUSTOMER RELATIONS AWARD FOR 7 YEARS

FINE SELECTION OF USED IMPORT
 & DOMESTIC ECONOMY CARS



Supra Turbo*

**THE PRIX-RACE FAVORITE—
 THE TOYOTA CELICA SUPRA.**

WATERFORD DIGEST



DON CASTLE

Contents

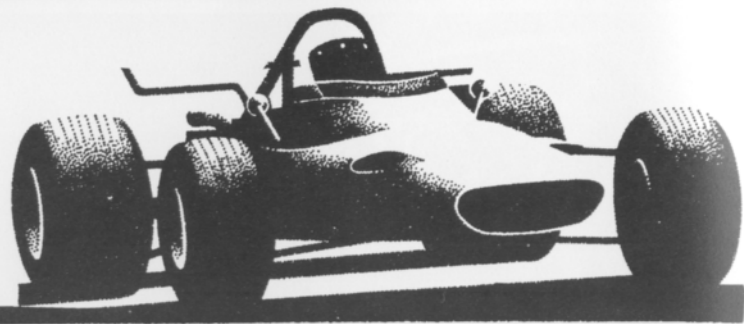


- 2. The Inside Line
- 3. Officials
- 8. Race Results
- 29. Looking Back With Bizer
- 32. Average Lap Speed Chart
- 32. Class Records
- 33. Racing Classes
- 34. Flags
- 35. Course Map
- 36. Racing Schedule

Staff

Editor: DAN HILL
 Design and Production: TAURUS ADVERTISING
 Photographers: AL BIZER
 DON CASTLE
 KARL RACENIS

Cover Photo by AL BIZER



The Inside Line

Welcome to the Waterford Hills Road Racing. This, the June meet is the third race weekend of WHRRI's twenty ninth year. If the pattern established during the first two weekends continues, you are in for a real treat. The competition has been clean, close and plentiful. Over 150 cars were girded during the weekend in May.

Many of the drivers you will be watching today were spectators in the bleachers or along the fence last season. Their interest in racing and their enjoyment of the WHRRI racing program have led to personal involvement of a highly visible sort. Former spectators can also be found among the corner workers, safety crews, timers and scorers or staffing the concessions and boutique. All are pursuing some aspect of their interest in road racing and contributing to the enjoyment of the sport for all of us.

These former spectators will, from time to time, slip out of the paddock to sit in the bleachers and watch races in which they are not involved. Keep your ears open. These racers are club members who really enjoy what they do. They are willing to answer questions and share their experiences to help you better understand the action on the track.

August 2-3 marks the Meadowbrook Historic Race Weekend this year. The featured marque is Lotus, so expect to see an interesting array of Loti as well as a variety of important road racing cars of the past. They come to race and race they do! The sights and sounds are terrific. Don't miss out!

If you didn't get one this time, try a paddock pass on your next trip to Waterford. The extra bucks will let you see the cars up close to see how they're put together. Drivers and crews, unless in the middle of heavy repairs, can provide useful information, especially for those thinking about becoming active in the sport.

Enjoy yourself! We hope to see you again July 25-26.

Cal Cortright

Officials

President	Don Burry
Secretary	Burck Grosse
Vice President	Dave Shook
Director of Racing	Bernie Fling
Race Coordinator	Dave Hinman
Chief Steward	Barb Kitch
Asst Chief	Eddie Atkinson
	Bill Tann
Chief of Flags & Communications	Willy Perez
Chief Registrar	Carol Humphreys
Chief of Safety	Blackie Meyers
Chief of Timing & Scoring	Peggy Krom
Chief Starter	Hal Goff
Chief of Tech	Dave Gernaey
Stewards of the Meet	Peter Quenet
	Joe Prato
	Don Sak
	Hugo Carlson
	Gary Ray
Licensing Chairman	Ray Krom
Membership Chairman	Diane Wollesen
Trophy Chairman	Cynthia Kempton
Grid Marshall	Emily Whitehead
Paddock Marshall	Bob Albo
Course Control	Blackie Meyers
Sound Control	Roger Roeske
Director of Facilities	Jim McIntosh
Controller	Danny MacDonald
Newsletter Editor	Jack Pringle

THE BMW M3. IT TRANSFORMS AN ENTHUSIAST INTO A FANATIC IN 7.6 SECONDS FLAT.



The new M3 stretches the definition of "street legal" to its outermost limits. It is a bona fide supercar.

Within its taut, aerodynamic skin pulses the pride of BMW's Motorsport racing division. A 192-hp, twin-cam, 16-valve, 4-cylinder street-tuned version of BMW's world champion Formula 1 powerplant. It turns 0-60 in 7.6 seconds, and 143 mph flat out.*

Even more impressive is its performance in everyday traffic.

Sport gearbox and steering and competition suspension keep you confidently in charge. While leather sport seats keep you comfortably ensconced.

Race in for a test drive. The M3 is no ordinary everyday car. But it could convert you into an everyday fanatic.



THE ULTIMATE DRIVING MACHINE.™

© 1987 BMW of North America, Inc. The BMW trademark and logo are registered. *BMW does not condone exceeding posted speed limits.

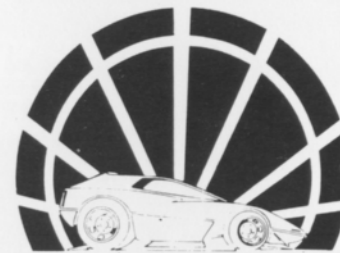
ERHARD BMW

Michigan's Oldest and Largest BMW Dealer
24130 Telegraph Rd. at 9½ Mile, Southfield

Open Mon. & Thurs.
Until 9 P.M.

352-6030

Complete Line of
Brand Name and
Custom Parts and
Accessories



Specialists in all
phases of High
Performance Work

RACELAND AUTO SUPPLY PERFORMANCE RACING ENGINES

26700 W. 8 Mile Rd., Southfield, MI 48034

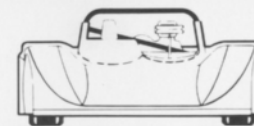
355-2288

Bet. Inkster and Telegraph

COMPLETE MACHINE SHOP

OPEN 6 DAYS A WEEK - CLOSED SUNDAY

- BELLhelmets,
 racemark suits
- CARTEL....brake fluid
- FERODO ...brake pads
- FILTRON ... air filters & kits
- FIRESTONE..race tires
- GIRLING-LOCKHEED...
 master & slave cyl.
- HYLOMAR. sealants
- INDY CAR MIRRORS ...
 formula & sports-2
- JONES..... tachometers
- KONI shocks
- LIFELINE.. fire systems
- LUKE safety harness



LOLA



- CARS
- PARTS
- SERVICE

Averill Racing Stuff

21421 Hilltop #10
Southfield, Michigan
48034

(313) 350-2881

- MERITmaster switch
- MOMO steering wheels
- NMBrod ends &
 bearings
- PANASPORT...one & three
 piece wheels
- PIT BOARDS. tools, tape,
 pyrometers
- PULSAR.....racing battery
- QUARTER MASTER...
 clutch disc assy.
- REDLINE.... oil & cv grease
- SIMPSON... suits & equip.
- SMITH..... gauges
- 1600 FORD PARTS...
 gaskets, rings, bearings
- CHASSIS REPAIRS -
 ALIGNMENT, fabrication, welding

WATERFORD DIGEST

WATERFORD DIGEST



Of Special Interest:
 SIDEMOUNT HEADERS
 ROLL BARS
 KONI SHOCKS
 SWAY BARS
 DRIVING LIGHTS
 COMP. SEAT BELTS
 AND HARNESSSES
 RACING CAMS
 LAKEWOOD

HOLLEY CARBS
 TRANS AM OIL PANS
 RACING OIL
 HOOKER HEADERS
 HURST
 MALLORY & ACCEL
 IGNITION SYSTEMS

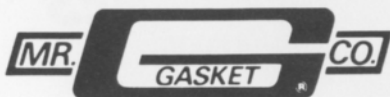
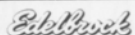


SYMBOL OF
SW
 EXCELLENCE



Redford Speed

26577 GRAND RIVER
 532-2050 or 532-6223
 10-8 MON-FRI 10-6 SAT



ANOTHER WINNER!



EF Hutton

SATURDAY CLASS RACES MAY 30-31, 1987 CLASS WINNERS

CLASS	DRIVER	CAR	BEST LAP
RACE 1			
FV	KEN WINTERS	CARACAL D-RED/WHITE	1:18.20
RACE 2			
ITS	GARY RAY	MAZDA RX7 - BRONZE	1:26.81
ITA	DEAN VOLTMER	MUSTANG II - BLUE	1:30.63
ITB	TERRY RICHARDS	DODGE CHARGER - BLUE	1:31.18
ITC	ROBIN BURNETTE	FIESTA - WHITE	1:29.29
SSGT	JOHN BACON	FIREBIRD - RED	1:25.63
SSA	LANCE OLSON	FIREBIRD - WHITE/BLK	1:31.71
SSC	BILL ARTZBERGER	VW GTI - BLACK	1:29.16
RACE 3			
SREN	TOM VANCAMP	SP RENAULT - RED	1:22.06
GP	GARI CHAFFIN	ALFA SPIDER - RED	1:21.86
HP	LEON NEAL JR.	FIAT SPYDER - RED/WH	1:31.65
GT4	JERRY MORLEWSKI	FIAT 124 - RED	1:20.56
GT5	TED WOLLESEN	MINI COOPER - YELLOW	1:20.45
RACE 4			
S2	JOHN SCHERER	LOLA T598 - RED	1:12.86
FP	JIM ARTHURS	ALFA GIULIETT - RED	1:23.22
GTX	HAL PRINGLE	CORVETTE-YELLOW/WHT	1:17.71
GT1	DAVE BUIST	FIERO - SILVER	1:14.77
GT3	KEN NELSON	OPEL MANTA - SILVER	1:20.23
RACE 5			
FC	DAVID SHOOK	REYNARD RF84 - WHITE	1:15.98
FF	MARK DAVISON	SWIFT - RED	1:13.34
FFF	JEFF HORTON	CROSSLE - YELLOW	1:14.09
FFR	JOHN SNYDER	ROYAL - WH/RED/BLU	1:33.74
F4	DENNIS WHITEHEAD	VIXON - RED/WH/BLUE	1:20.17

**At your service . . .
with trained technicians.**

Trust your Subaru to the experts. Complete bumper-to-bumper service and maintenance.



THE 1986 SUBARU[®]
Inexpensive. And built to stay that way.

M & W MOTORS, INC.

44756 N. Gratiot, MT CLEMENS, MI 48043 — 465-2661

OUR CARS PERFORM. AND SO DO WE.



Peter Cook, our general manager, certainly performs. He and co-driver Terry Abbott, our service shop foreman, compete in the grueling showroom stock endurance races both with I.M.S.A. and S.C.C.A. Six to 24 hours of non stop racing in Bill Cook's Porsche 944.

Ed Geiser, our service and racing director, performs too. With a team of factory-trained master technicians dedicated to maintaining your Porsche or Audi as long as you own it. Our master technicians receive the best training both with the factory and at the race track. Our award winning parts team, led by Steve Shepherd, performs to make sure that the parts you need are here when you need them.

At Bill Cook Imported Cars, we know our cars perform, and we expect the same of ourselves.



"NOBODY EVEN COMES CLOSE"



BILL COOK
IMPORTED CARS, INC.

37901 GRAND RIVER AVE.
FARMINGTON HILLS, MI 48024

471-0044

Sales & Leasing

WATERFORD DIGEST

SUNDAY CLASS RACES MAY 30-31, 1987 CLASS WINNERS

CLASS	DRIVER	CAR	BEST LAP
RACE 1			
FV	KEN WINTERS	CARACAL D	1:18.49
F440	DON GIBBONEY	NOVACAR J - WHITE	1:16.23
RACE 2			
ITS	GARY RAY	MAZDA RX7 - BRONZE	1:26.41
ITA	DEAN VOLTMER	MUSTANG II - BLUE	1:30.04
ITB	TERRY RICHARDS	DODGE CHARGER - BLUE	1:31.28
ITC	ROBIN BURNETTE	FIESTA - WHITE	1:31.37
SSX	RYAN BAYLEY	SPRINT - WHITE	1:36.14
SSGT	JOHN BACON	FIREBIRD - RED	1:24.90
SSA	LANCE OLSON	FIREBIRD - WHITE/BLK	1:29.88
SSB	JEFF LANE	DODGE SHELBY - BLUE	1:28.94
SSC	BILL ARTZBERGER	VW GTI - BLACK	1:28.31
RACE 3			
SREN	TOM VANCAMP	SP RENAULT - RED	1:20.19
GP	HUGO CARLSON	M.G. MIDGET - ORANGE	1:22.06
GT4	JERRY MORLEWSKI	FIAT 124 - RED	1:20.54
GT5	JIM SZILAGYI	HONDA CIVIC - YELLOW	1:34.03
RACE 4			
S2	DAN O'CONNOR	LOLA 596 - WHITE	1:12.89
FP	JIM ARTHURS	ALFA GIULIETT - RED	1:22.25
GTX	HAL PRINGLE	CORVETTE - YELLOW/WH	1:18.71
GT1	DOUG BUIST	CORVETTE - RD/BLK/SIL	1:16.07
GT3	TIM POTT	PORSCHE 914 - RED	1:20.55
RACE 5			
FC	DAVID SHOOK	REYNARD RF84 - WHITE	1:15.98
FF	MARK DAVISON	SWIFT - RED	1:12.88
CFF	JEFF HORTON	CROSSLE - YELLOW	1:15.03
FFR	JOHN SNYDER	ROYAL - WH/RED/BLU	1:31.08
F4	JUDY FERCHAT	XPIT 401 - WHITE	1:21.39

CADILLAC OVERALL SUPPLY CO.

RENTAL UNIFORMS - SHOP TOWELS
DUST CONTROL - ENTRANCE MATS

PHONE (313) 366-7700

TONY KUNERT
SALES REPRESENTATIVE

6401 E. DAVISON
DETROIT, MICH.

WATERFORD DIGEST

FEATURE RACES MAY 30-31, 1987 CLASS WINNERS

CLASS	DRIVER	CAR	BEST LAP
FEATURE 1			
F440	DON GIBBONEY	NOVACAR J - WHITE	1:18.06
FV	KEN WINTERS	CARACAL D-RED/WHITE	1:18.60
FV	STEVE MCNAMARA	LYNX B - BLUE	1:19.12
FV	DAVID SHELBO	ZINK C4 - BLACK	1:20.14
FV	MICHEAL TROSELL	LYNX B - RED	1:19.31
FEATURE 2			
GT4	JERRY MORLEWSKI	FIAT 124 - RED	1:20.62
GT4	TOM DOWNEY	NISSAN 510 - BLUE	1:21.50
GP	HUGO CARLSON	M.G. MIDGET - ORANGE	1:21.99
GP	PAT NOWAK	SPRITE - BLACK	1:21.07
SSGT	JOHN BACON	FIREBIRD - RED	1:25.40
FEATURE 3			
S2	JOHN SCHERER	LOLA T598 - RED	1:12.45
S2	CURT CATALLO	LOLA 596 - RED	1:13.96
S2	STAN KASIEWICZ	SWIFT DB2 - YELLOW	1:13.74
S2	JOE O'CONNOR	LOLA 596 - WHITE	1:16.94
GT1	DON BURRY	CORVETTE - RED/WH/BL	1:20.49
FEATURE 4			
FF	KEITH MUNROE	VAN DIEMAN RF83 - GR	1:12.06
FF	ARTHUR KUHN	VAN DIEMAN - MAR/SIL	1:13.62
FF	LEWIS COOPER III	VAN DIEMAN - RED	1:13.42
CFF	JEFF HORTON	CROSSLE - YELLOW	1:14.09
FC	DAVID SHOOK	REYNARD RF84 - WHITE	1:15.62

WILLIAM A. KIEFER
President

SCOTT W. KIEFER
Vice-President

Micro Gauge, Inc.

CNC Machining
O.D. Grinding
Precision Honing

(517) 546-7036

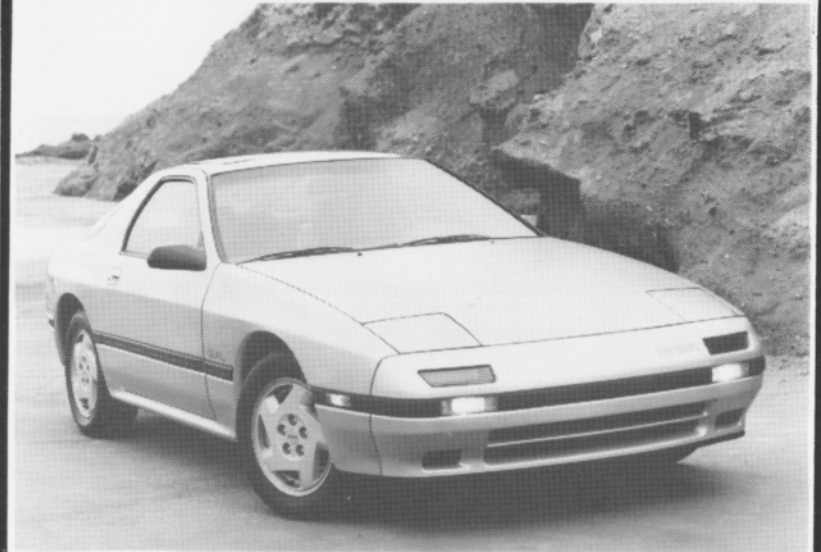
5910 E. Grand River
Howell, MI 48843



PHOTOS BY AL BIZER

BILL Cook mazda

37911 Grand River at 10 Mile Rd.
Farmington Hills, MI 471-0800



BILL Cook mazda

"Where Excellence is the Standard, Not the Option"

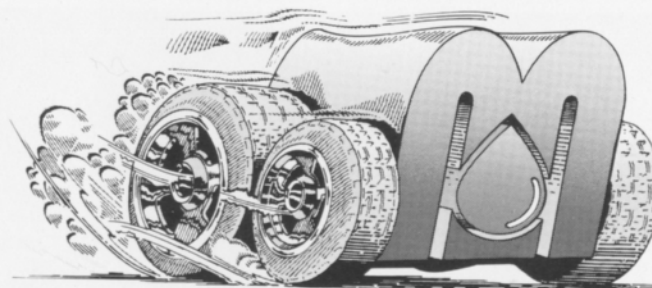
WATERFORD DIGEST

PHOTOS BY AL BIZER



WATERFORD DIGEST

AL BIZER



See you in the winner's circle!

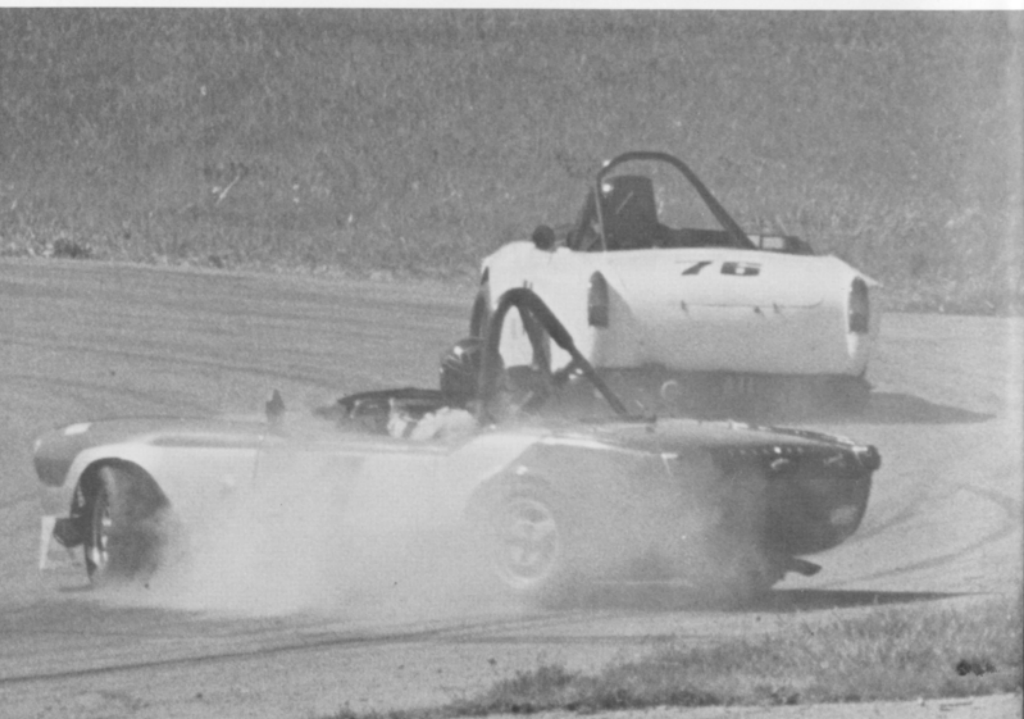
Give your car the competitive edge, with Mid-States Petroleum, the official supplier of Union 76 racing gasoline at Waterford Hills. We also carry CAM-2 and Howell racing gasolines, racing methanol, motor oils, and lubricants, that will have you leading the pack. Call Mid-States today and get the edge!



Mid-States Petroleum, Inc.
P.O. Box 186 • Troy, Michigan 48099
In Michigan, call 1-800-482-2611
For rest of USA, call 1-800-554-0500

WATERFORD DIGEST

PHOTOS BY DON CASTLE



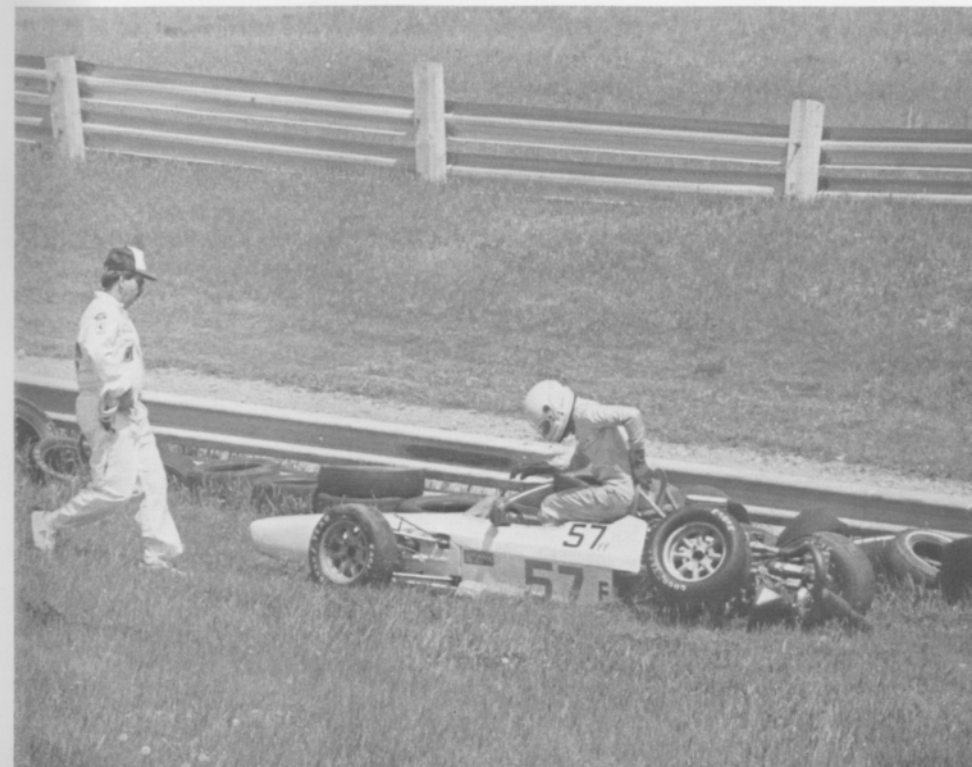
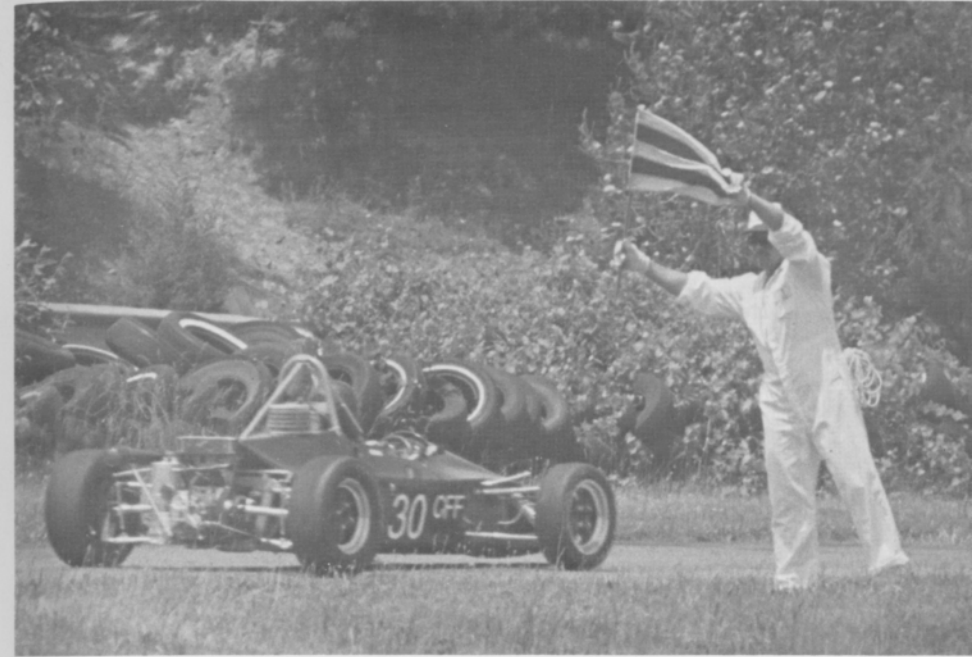
WATERFORD DIGEST

PHOTOS BY DON CASTLE



WATERFORD DIGEST

PHOTOS BY DON CASTLE



WATERFORD DIGEST

PHOTOS BY AL BIZER



WATERFORD DIGEST

KAMEI • BOGE • LOBRO • LEISTRITZ • BILSTEIN • HELLA • BOSCH • RONAL

HELLA • BILSTEIN • LEISTRITZ • BOGE • LOBRO



IMPORT SERVICE & PARTS

DRIVING SHOULD BE FUN!

So you love hot cars? We do too. We're Motorheads. We sell Bilstein, Hella, Neuspeed, BBS, Ronal; if it makes the car more fun to drive, we're into it. We also offer expert service and installation.

Munk's wants to be your source for the best in performance at fair prices. Call us, or stop by, and we'll show you just how much fun driving can be.

Dedicated to doing it right for over 15 years!

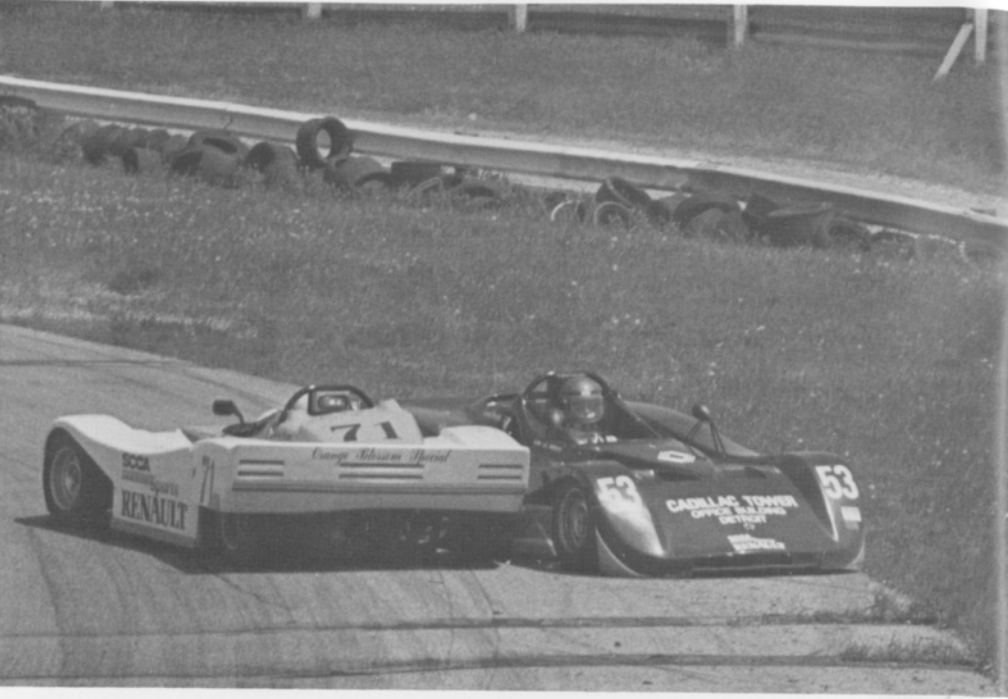
3080 W. Huron (M-59)
Waterford Township
681-8081
1803 Orchard Lake Rd.
Bloomfield Township
335-5424

KAMEI • BOGE • LOBRO • LEISTRITZ • BILSTEIN • HELLA • BOSCH • RONAL



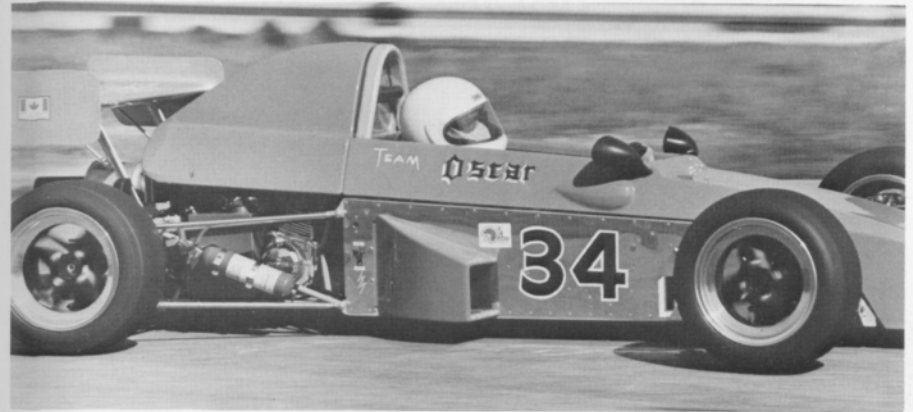
WATERFORD DIGEST

PHOTOS BY DON CASTLE



WATERFORD DIGEST

PHOTOS BY AL BIZER



BFGOODRICH T/A[®] RADIALS TAKE ON THE ROAD™

COMP T/A

The Ultimate High-Performance Tire

EURO RADIAL T/A

The Optimal Blend of Handling, Treadwear, Quality and Style

RADIAL T/A

The New Generation of the Original Race-Winning Street Radial



CHOOSE THE RIGHT T/A[®] RADIAL

	HANDLING	WET & DRY TRACTION	TREADWEAR	RIDE	SPEED RATING	SIDEWALL
COMP T/A The Ultimate High-Performance Tire	EXCELLENT	EXCELLENT	VERY GOOD	VERY GOOD	V OVER 130 MPH	RBL*
EURO RADIAL T/A The Optimal Blend of Handling, Treadwear, Quality and Style	EXCELLENT	EXCELLENT	EXCELLENT	VERY GOOD	H UP TO 130 MPH	RWL RBL*
RADIAL T/A The New Generation of the Original Race-Winning Street Radial	EXCELLENT	EXCELLENT	EXCELLENT	EXCELLENT	S UP TO 112 MPH	RWL RBL*

GOOD VERY GOOD EXCELLENT

*RWL: Raised White Letters
*RBL: Raised Black Letters

BFGoodrich

Crankshaft Craftsmen Inc.



CRANKSHAFT GRINDING
CAMSHAFT GRINDING
CRANKSHAFT WELDING
POLISHING STRAIGHTENING
HIGH PERFORMANCE WORK
BEARINGS AVAILABLE

QUALITY BEFORE QUANTITY

RUSS TAYLOR - PRESIDENT

(366-0140)

2957 JEROME • EAST OF I-75 • DETROIT

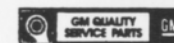
THINK WINK

CARS & TRUCKS



Satisfying Car Buyers For Over 42 Years

BILL WINK CHEVROLET
10700 FORD RD., BET. WYOMING & SCHAEFER
DEARBORN, MICHIGAN



582-5400

"KEEP THAT GREAT GM FEELING WITH GENUINE GM PARTS"



AUTOMETRIC BODY SHOPS

American .. Import



818 N. Main
Royal Oak, MI
398-0200

490 S. Telegraph
Pontiac, MI 48053
332-0600

8645 E. 10 Mile
Centerline, MI
757-7491

24465 Gratiot
East Detroit, MI
774-3455



689-4940

PIRELLI & MICHELIN TIRES

OFFICIAL AET TEST
AET TEST FREE WITH
NORMAL MAINTENANCE
SERVICE

COMPLETE REPAIR SERVICE

- MERCEDES BENZ
- PORSCHE
- VOLKSWAGEN
- AUDI
- B-M-W

1725 E. MAPLE RD (15 MILE) TROY
1 BLOCK EAST OF I-75



FOREIGN AUTOMOTIVE SUPPLY, LTD.



Known for our **LOW, LOW PRICES**
OEM QUALITY PARTS • LARGE INVENTORY • REPAIR MANUALS
HIGH PERFORMANCE LIGHTS • BOSCH • UPS DAILY

Hours to serve you:
Weekdays: 8:30-7:30
Saturdays: 9:00-5:00
SUNDAYS: 11:00-3:00

380 West 11 Mile
Madison Heights
11 Mile I-75 I-696
John R.

QUESTIONS? 542-6150



Quartz Euro Code
Lighting by
MARCHALL,
HELLA

Exhaust Systems
by ANSA

Suspension by
KYB,
SUSPENSION
TECHNIQUES,
ADDCO

Racing Equipment
by BELL,
YANKEE

Rollbars, Air Dams,
Sports Car Apparel



Accessory
House inc.

313-548-4488

23257 Woodward

Ferndale mi. 48220

VAST SELECTION OF
IMPORT AUTO ADORNMENTS
WORLD'S FINEST MANUFACTURERS
FOR THE DISCRIMINATING DRIVER

WATERFORD DIGEST

PHOTOS BY DON CASTLE



WATERFORD DIGEST

LOOKING back

with Bizer

Then + Now



GLEN LYALL - AUGUST 13, 1961



GLEN LYALL - MAY 30, 1987 BACK AT IT AGAIN

Beck's-ULTRA HIGH PERFORMANCE

7000 SCHAEFER ■ DEARBORN ■ MICH. 48126
(313) 846-2600
(800) 482-9381 [Mich. toll free]

TIRES

GOODYEAR

BF Goodrich

YOKOHAMA

PIRELLI

BF Goodrich
RACE TIRE PROGRAM

SHOCKS



10% DISCOUNT TO TACA MEMBERS
MAJOR CREDIT CARDS ACCEPTED

WHEELS

BBS

GOTTA

wed's
TURBO WHEELS

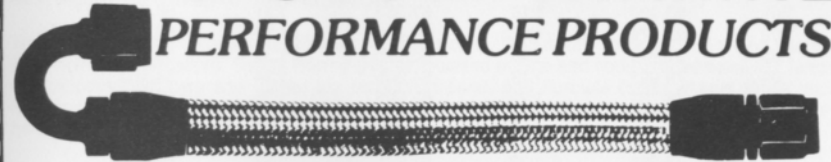
ENKEI

centra CENTRA

Epsilon
ROAD WHEELS



AUTO-CYCLE-MARINE PERFORMANCE PRODUCTS



"THE LARGEST INVENTORY IN THE MIDWEST"
HOSE ★ FITTINGS ★ ADAPTERS

Aeroquip
high performance hose and fittings

(313) 280-1171

EARL'S
PERFORMANCE PRODUCTS

Peter Betrus, Jr.

4940 Delemere, Royal Oak, MI 48073
Catalog \$2

Thomas J. Betrus

Hoosier[®] RACING TIRES

JAMALC RACING

(517) 223-8704

John
Morris

Al
Ciaramitaro

Average Lap Speed

Min/Sec	MPH	Min/Sec	MPH	Min/Sec	MPH
1:00	85.326	1:15	68.261	1:30	56.884
1:01	83.927	1:16	67.363	1:31	56.259
1:02	82.574	1:17	66.488	1:32	55.647
1:03	81.263	1:18	65.635	1:33	55.041
1:04	79.993	1:19	64.805	1:34	54.463
1:05	78.762	1:20	63.995	1:35	53.890
1:06	77.569	1:21	63.204	1:36	53.329
1:07	76.411	1:22	62.434	1:37	52.779
1:08	75.288	1:23	61.681	1:38	52.240
1:09	74.197	1:24	60.947	1:39	51.713
1:10	73.137	1:25	60.230	1:40	51.196
1:11	72.106	1:26	59.530	1:41	50.689
1:12	71.105	1:27	58.846	1:42	50.192
1:13	70.131	1:28	58.178	1:43	49.704
1:14	69.183	1:29	57.523	1:44	49.227

The Waterford Hills Road Course is 1.4221 miles long (7,509 ft. center line of track). To determine the speed of any individual car, time it for one complete lap and read off the speed from this table.

Class Records

ASR	Ed Murray	Chevron	1:10.9	9/81
CSR	Evan MacDonald	M-2	1:10.5	9/78
DSR	Ed Murray	Jeddi	1:12.8	9/85
S/2	Larry Campbell	Lola	1:11.5	9/79
SREN	Dave Finch	SPT Renault	1:21.3	6/84
EP	Lou Livengood	Porsche 356	1:16.3	6/80
FP	Barry Hartzel	MG Midget	1:16.2	7/78
GP	Kirk Carlson	MG Midget	1:17.0	8/81
HP	Paul Cameron	Sprite	1:20.4	7/78
GT1	Don Sak	Corvette	1:13.2	5/86
GT2				
GT3	Craig Allen	Lotus Elan	1:16.4	9/83
GT4	Jerry Morlewski	Fiat 124	1:18.7	9/85
GT5	Ted Wollesen	Mini Cooper	1:19.2	9/85
ITA	Dean Voltmer	Mustang II	1:30.9	5/86
ITB	Ray Krom	Scirocco	1:28.8	9/85
ITC	Dave Vestrand	Fiesta	1:32.6	8/85
ITS	John Heeney	Datsun 280Z	1:26.2	5/86
SSGT	D.J. Fazckas	Porsche Turbo	1:22.7	5/86
SSA	Bill Bayley	Mustang	1:26.2	6/85
SSB	Ron Miller	Honda CRX SI	1:27.0	5/86
SSC	Ray Krom	VW-GTI	1:28.8	5/86
**FA	Andy Falbo	March	1:06.1	8/83
FC	Jay Novak	Novakar	1:09.3	9/84
FF	Vince Muzzin	Royale	1:09.4	6/78
FFR	Mark Davidson	Crossle 32	1:17.0	5/84
F4	Stuart Lamont	Xpit	1:12.5	7/83
FV	Lee McLeod	Lynx	1:15.7	7/81
F440	Jay Novak	Epee	1:14.8	9/85

**track record

Racing Classes

To insure fairness in competition, all road racing cars are grouped into racing classes by the Sports Car Club of America in its General Competition Rulebook (GCR). Waterford Hills Road Racing observes the GCR regulations with some minor exceptions.

The five Competition groups are: Production (sport cars), Showroom Stock (GT cars and sports cars with minimal modification), Sports Racing (Highly modified engine and body over wheels), GT (enclosed cockpit passenger cars and former big production cars), and Formula (open wheels single cockpit). Racing groups are subdivided into classes of equally competitive cars based upon engine size and handling characteristics.

The cars listed below are representative of their racing classes and include most of those you will see at Waterford Hills.

PRODUCTION

EP	Porsche 356 series, MGB, Opel GT, Porsche 914/4, Triumph TR-4
FP	Saab Sonnet, MG Midget Mk III & IV, Lotus 7, Triumph Spitfire Mk III & IV & 1500
GP	MG Midget Mk I & II, Triumph Spitfire Mk I & II, MGA, Austin Healy Sprite, Fiat X1/9, Fiat 124 Spider, Alfa Romeo, Porsche Coupe
HP	Austin Healy Sprite Mk I & II, Fiat 850, MG Midget 948, Fiat Abarth

SHOWROOM STOCK

SS-GT	New class with current model cars of SSA plus additional modifications allowed
SSA	Mustang Cobra, Mazda RX series, Porsche 924, Capri V-6, Datsun 280Z
SSB	Triumph TR-8, Scirocco, Dodge Colt, Datsun 200SX, Fiat 124
SSC	Fiat X1/9, Pinto, VW Rabbit, Renault LeCar, Mustang 2.3, MGB, Honda Civic, Toyota Corolla, Pontiac Astre

SPORTS RACING

ASR	over 1300 cc but less than 6000 cc
CSR	over 850 cc up to 1600 cc (with restrictions)
DSR	below or equal to 850 cc
S/2000	uses Ford 2000 cc overhead cam engines only

GT CLASSES

GT-1	Corvette, Camaro, Ford Cobra II, Shelby GT-350, Porsche 911 SC, Dodge Aspen
GT-2	Datsun Z series, Mazda RX7, Porsche 914/6 & 924 Turbo, Sunbeam Tiger, Triumph TR-6 & TR-8
GT-3	Opel 1900, Datsun 510 1800, Mustang 2300, Pinto 2000 & 2300, Cosworth Vega
GT-4	Fiat 124 Sports Coupe, Pinto 1600, Toyota Celica, Dodge Colt, Toyota Corolla 1600, Renault LeCar, Datsun 510 1600, Ford Escort/Lynx, VW Rabbit & Scirocco
GT-5	Datsun 200SX, Austin/Morris Mini Cooper, VW 1300, NSU TT, Honda Civic, Fiat 124 1200, Toyota Corolla 1200

FORMULA

FF	Formula Ford — Cortina or Pinto 1600 cc engine, strict weight to engine ratio with driver's weight included in total legal weight, very equal class
FFR	Formula Ford Radial — the cars are the same as the above class except they must use BF goodrich T/A radial tires
FV	Formula Vee — all Volkswagen components, 1200 cc engine, driver's weight included in total legal weight, very competitive class
F/ATLC	Formula Atlantic — choice of engines in over 1100 cc up to 16000 cc range, wings and other modifications allowed, not meant to be an inexpensive race car
F/CNTL	Formula Continental — engine up to 1100 cc, rear wings allowed, combines the modifications of the previous Formula C and Formula Super Vee classes
F440	Formula 440 — utilizes Fuji two-cycle snowmobile engines and drive train, rigid suspension, wings permitted
F4	Formula Four — Canadian class, motorcycle engine power plant, engine size determines weight and transmission allowed

Flags

yellow with red stripes



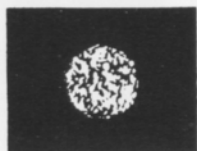
Take care, oil has been spilled or a slippery condition exists somewhere in your vicinity. Look at the track surface.

black



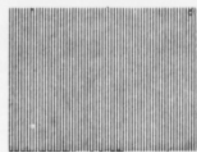
Sloppy or dangerous driving. Complete the lap you are on, stop at the Start/Finish line for consultation with Chief Steward. Waving Black Flag (displayed on all corner stations) means the race is stopped. Slow down immediately and proceed around the track with extreme caution to the pit lane for a re-start.

black with orange ball



(Meatball Black Flag) There is something mechanically wrong with your car. Proceed to your pits at reduced speed.

green



(Or no flag) Course is clear.

yellow



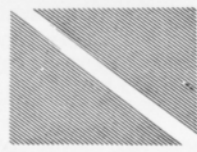
(Stationary) Take care, danger, no passing.
(Waving) Great danger, be prepared to stop, no passing.

red



Waving red (displayed by the Starter only) means the race is stopped, slow down immediately and proceed around the track with extreme caution to the pit lane.

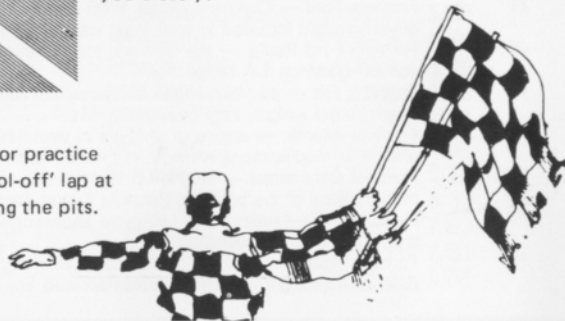
blue with diagonal yellow stripes



(Motionless) Another competitor is following you closely.

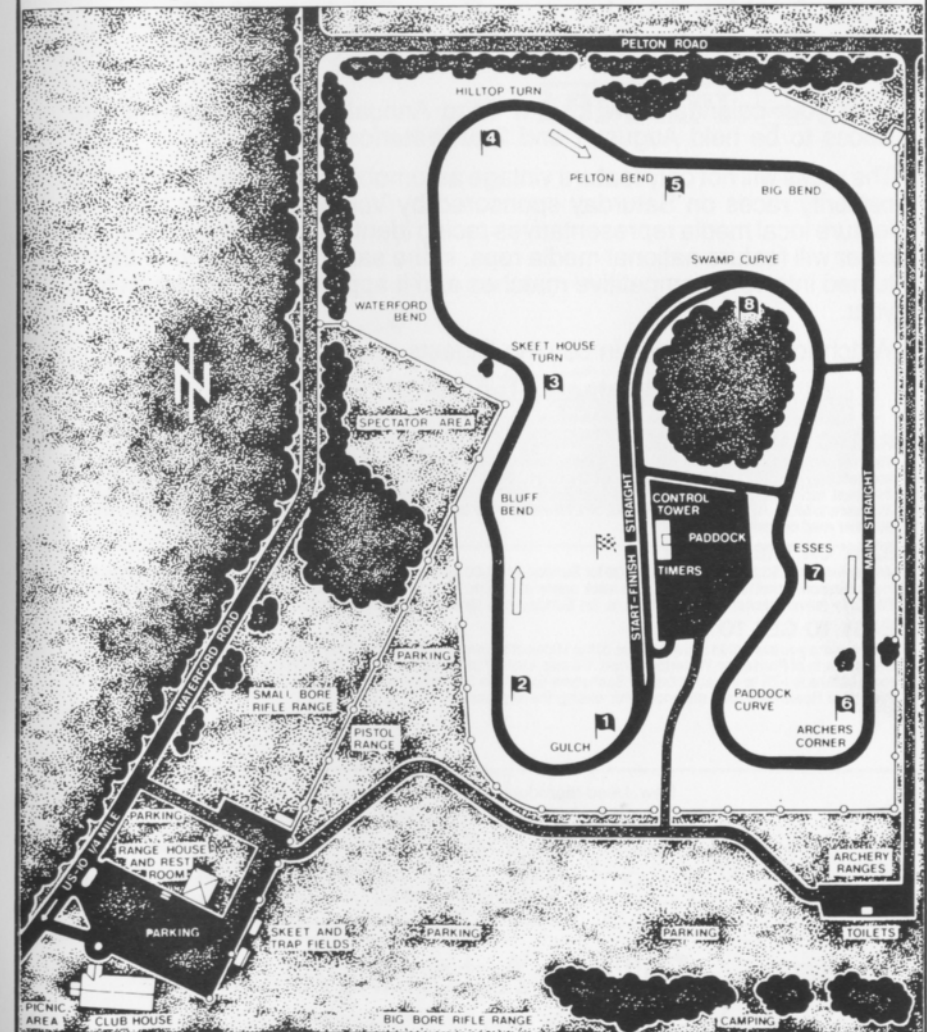
checkered

You have finished the race (or practice session). Complete one "cool-off" lap at reduced speed before entering the pits.



Waterford Hills Course Map

a 1.5 mile asphalt road course at waterford, michigan



WATERFORD DIGEST

Waterford Hills 1987 Road Racing Calendar Schedule

Race 1	May 16-17	Race 4	July 25-26
Race 2	May 30-31	Race 5	Aug. 29-30
Race 3	June 27-28	Race 6	Sept. 26-27

Mark your calendar now for the Third Annual Meadowbrook Historic Races to be held August 1 and 2 at Waterford Hills.

The races will not only feature vintage automobiles, there will also be two celebrity races on Saturday sponsored by Volkswagen. One race will feature local media representatives racing identically equipped VWs, the other will feature national media reps. in the same cars. Last year these turned into very competitive matches and it appears they will again this year.

Watch for more details in coming Digests and plan to be there.

Vintage Race Aug. 1-2

RACING RAIN OR SHINE

The hills of Waterford are being invaded . . . with an army of sports cars, sedans and formula cars in fierce, wheel to wheel competition . . . and for 1987 we've assembled the largest field in our 29 year history! Watch over 130 top drivers battle it out in the finest racing machinery from America and Europe. Corvette, Porsche, Datsun. Everything from Capris to Camaros, McLaren's to MG's. All together, fighting it out on a mile-and-a-half track with 13 right and left turns that twist up and down hills like no other road course in the U.S.A.

EASY ON THE WALLET

Admission is just \$3.00 for Saturday, \$5.00 for Sunday, or \$6.00 for the entire weekend. Children under 12 are always free and a Season Ticket is only \$20.00. The track opens at 10 a.m. for practice and qualifying. Racing begins at 1:30 p.m. on Saturday (seven races) and at 11:30 a.m. on Sunday (ten races). For more information phone (313) 623-0444.

EASY TO GET TO

Chances are you live within a few minutes of the Midwest's premier road course. The W.H.R.R.I. Race Track is located just 6 miles north of Pontiac on Waterford Road, 1/4 mile each of Dixie Highway (U.S. 10) in Waterford, Michigan. The easiest route to take is I-75 to the southbound Sashabaw Exit. Take Sashabaw south to Pelton Road, then take Pelton west to Waterford Road. The total distance after exiting the expressway is 2-1/2 miles.

New, Used reproduction Parts and Accessories
Custom Paint and Body Repair

BOJAX

HiTech Automotive

design and fabrication

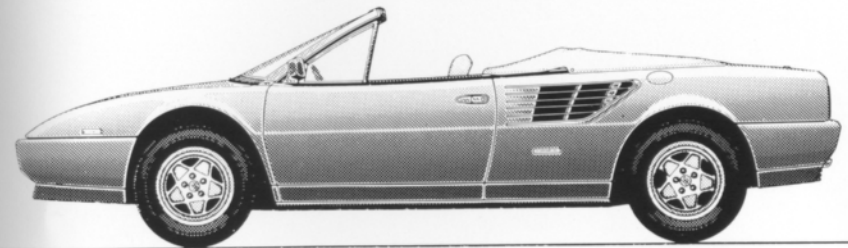
DOUG FEHAN
BOB FEHAN
313/549-5410

4712 Fernlee
1st Block East of Coolidge, S. of 14
Royal Oak, Michigan 48073

Now...3.2 Mondial Cabriolet

A Ferrari is an investment: in pride, in excellence, in achievement. Protect your investment by purchasing and maintaining your Ferrari through your authorized dealer. Only your authorized Ferrari dealer can provide full factory warranty, service and parts.

Ferrari 



The Sports Car Exchange

MICHIGAN'S EXCLUSIVE AUTHORIZED AGENT FOR
FERRARI

14510 MICHIGAN AVE. DEARBORN, MICHIGAN 313-581-6222

THE WATERFORD DIGEST

Published by Waterford Hills Racing Inc., 1987