

WATERFORD HILLS

ROAD RACING • 1982



MAY \$1.00

SPRING SPRINTS

RACING RAIN OR SHINE

The peaceful hills of Waterford are being invaded... with a thundering army of sports cars, sedans and formula cars in fierce, wheel-to-wheel competition... and for 1982, we've assembled the largest field in our 24 year history! Watch over 130 top drivers battle it out in the finest racing machinery from American and Europe. Corvette, Porsche, Datsun. Everything from Capris to Camaros, McLarens to MGs. All together, fighting it out on a mile-and-a-half track with 13 right and left turns that twist up and down hills like no other road course in the U.S.A.

WATERFORD HILLS 1981 ROAD RACING CALENDER

- MAY 8 - 9
- MAY 29 - 30
- JUNE 26 -27
- JULY 24 - 25
- AUGUST 28 - 29
- SEPT. 25 - 26

EASY ON THE WALLET

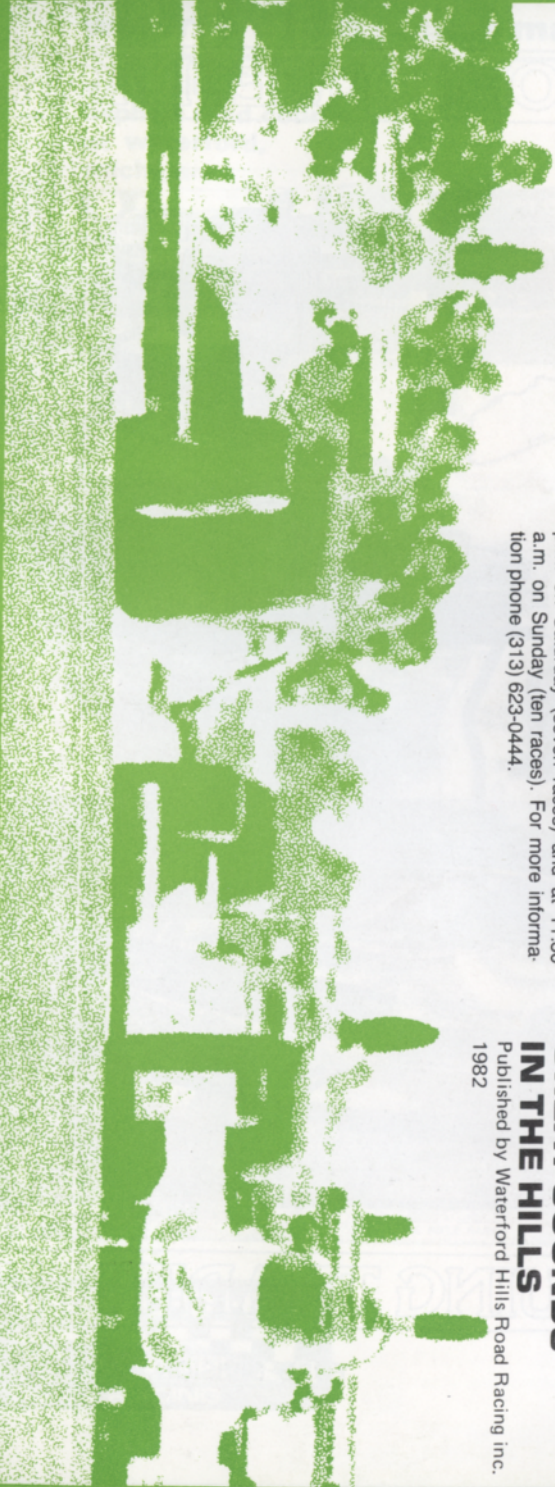
Admission is just \$2.50 for Saturday, \$4.00 for Sunday, or \$5.50 for the entire weekend. Children under 12 are always free and a Season Ticket is only \$20.00. The track opens at 10 A.M. for practice and qualifying. Racing begins at 1:30 p.m. on Saturday (seven races) and at 11:30 a.m. on Sunday (ten races). For more information phone (313) 623-0444.

EASY TO GET TO

Chances are you live within a few minutes of the Midwest's premier road course. The W.H.R.R.I. Race Track is located just 6 miles north of Pontiac on Waterford Road, 1/4 mile east of Dixie Highway (U.S. 10) in Waterford, Michigan. The easiest route is to take I-75 to the southbound Sashabaw Exit. Take Sashabaw south to Pelton Road, then take Pelton west to Waterford Road. The total distance after exiting the expressway is 2 1/2 miles.

GREAT SOUNDS IN THE HILLS

Published by Waterford Hills Road Racing inc. 1982



TOYOTA TOYOTA TOYOTA TOYOTA TOYOTA TOYOTA TOYOTA TOYOTA TOYOTA

PACE CAR FURNISHED BY

PAGE TOYOTA



8 1/2 & TELEGRAPH
SOUTHFIELD, MICH.

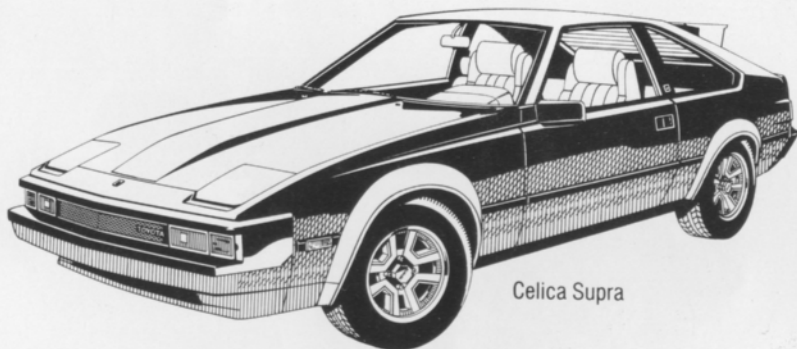
352-8580

MICHIGAN'S #1 TOYOTA DEALER
IN SALES, SERVICE AND BODY REPAIR



WINNER OF THE NATIONAL SERVICE AND
CUSTOMER RELATIONS AWARD 4 YEARS RUNNING

FINE SELECTION OF USED IMPORT
& DOMESTIC ECONOMY CARS



Celica Supra

THE PRIX-RACE FAVORITE — THE TOYOTA CELICA SUPRA.

TOYOTA TOYOTA TOYOTA TOYOTA TOYOTA TOYOTA TOYOTA TOYOTA TOYOTA

WATERFORD



photo by al bizer

© Published by Waterford Hills Road Racing, Inc.

contents

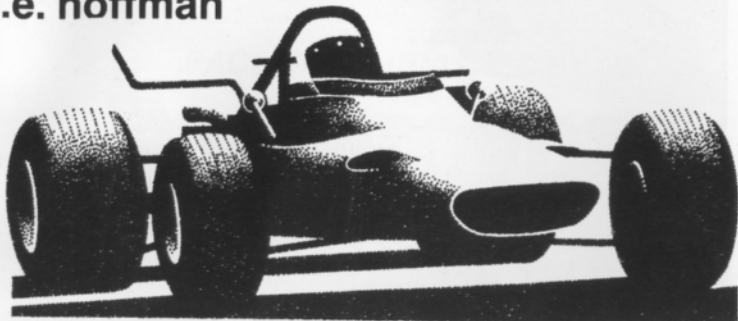
2. the inside line
3. officials
14. top ten drivers
23. looking back with bizer
25. average lap speed chart
25. class records
26. racing classes
27. flags
28. course map
30. racing schedule

staff

publisher	s.e. hoffman
feature editor	peter quenet
advertising director	jerry morlewski
art director	dan hill
production staff	brenda riley
photographers	al bizer
	john gacioc
	john j. willyard
	joe costa
cover photo	al bizer

the inside line

s.e. hoffman



New race season - new look! There have certainly been some changes made as we welcome all of our race fans to the 24th season of racing with these May Sprints!

The new race tower in the infield is not only attractive, but it also gives our volunteer race workers some much needed extra space! Did you know that most of it went up in two days -thanks to the dedicated help of our club members under the direction of a professional carpenter or two?! That's really what our race club is all about! Waterford Hills is a club of enthusiastic members dedicated to the sport of amateur sports car racing. A non-profit corporation, we rely on our members to do what we can't afford to hire.

Many other jobs were done that are not so obvious. The guardrail through the first three turns and in the esses was repaired and the tire wall restacked. Track repairs of the minimal winter damage were made. An overall sprucing up of the paddock and spectator areas was done. All of this was accomplished with virtually no cooperation from Mother Nature! We are in great shape as we start this new race season!

We welcome back many competitors from previous years; some will be in new cars so be sure to use the entry lists in your **digest** to find your favorites. Our rookie competitors from the very successful April competition driving school will be making their racing debuts this May. You can spot them by the day-glo orange triangles they sport in the rear of their race cars. That triangle tells our veteran drivers, "Nervous novice, so take care when passing", and protects both competitors. After all, every veteran ran with a triangle once!

A short reminder that the big numbers on the sides and decks of the race cars are the drivers number of record and

you can find him on the entry list with it. The small letters (EP, GT 2, FV) indicate which class the car competes in. That's important as we run several classes together and explains why more than one car will take a victory lap with the checkered flag.

We have some very special treats in store for our spectator fans this season. Included are appearances by several corporations involved with motorsport and street car production. Special parades by area marque or sports car clubs are scheduled for Saturday and Sunday race breaks and surprise visits by some celebrity race fans are in the offing.

Plan right now to join us for the full race season. Check the schedule on the back of this **digest** and bring your friends for a fun - filled weekend! In the meantime, sit back, relax and enjoy the May Sprints with us.

Happy viewing!!

officials

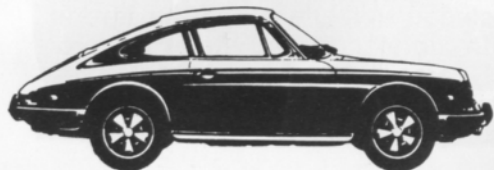
oakland county sportsmen's club president	art miracle
waterford hills road racing club president	jim mcintosh
chief steward	john morris
stewards committee	dan macdonald
	don clining
	tim evans
	bill hallandal
	peter quenet
	mike white
director of racing	dena hallandal
race coordinators	sue bogart
	dennis whitehead
chiefs of timing and scoring	anne roeske
	chris syfert
chief of flags and communications	sue hoffman
chief of communications	chris maurer
chief starter	hal goff
chief tech inspector	tony kunert
chief paddock marshal	bruce penbarthy
chief grid marshal	nancy waggoner
chief course marshal	jim vollmers
chief registrar	jan evans
licensing chairman	jerry shioff
membership chairman	judy davis
trophy chairman	lynda gale
la boutique	pat prato



689-4940

PIRELLI, MICHELIN & KLEBER TIRES

COMPLETE REPAIR SERVICE



- MERCEDES BENZ
- PORSCHE
- VOLKSWAGEN
- AUDI
- B-M-W

1725 E MAPLE RD (15 MILE) TROY
1 BLOCK EAST OF I-75



25 MPG AND THE PERFORMANCE OF A BMW.

While the BMW 320i (with standard transmission) complies brilliantly with fuel-efficiency regulations, delivering ⁽²⁵⁾ EPA estimated miles per gallon, 36 estimated highway mileage and, based on these figures, an estimated mpg range of 38.3 miles and a highway range of 551 miles, its extraordinary performance remains uncompromised.

(Naturally our fuel efficiency figures are for comparison purposes only. Your actual mileage and range may vary, depending on speed.

weather and trip length. Your actual highway mileage and highway range will most likely be lower.)

If the notion of a fuel-efficient car that's fun to drive intrigues you, call your nearest BMW dealer to arrange for a thorough test drive.



THE ULTIMATE DRIVING MACHINE.
BMW MUNICH, GERMANY



BMW 320i

© 1981 BMW of North America, Inc. The BMW trademark and logo are registered trademarks of Bayerische Motoren Werke, A.G.

ERHARD MOTOR SALES INC.

32715 Grand River • Farmington • 477-6400
24130 Telegraph Rd. at 9½ Mile • Southfield • 352-6031

SPORT & SPECIALITY RESTORATION
color matching • collision repairs

FERRARI • ALFA ROMEO • MERCEDES • BMW • LOTUS • MG



ray's customs inc 682-3123
w. bloomfield



TIRE TRUEING

Goodyear Eagle NCT-GT We Beat Any Deal	B.F. Goodrich Radial T/A's Michelin TRX	
		8-8 Daily
		8-5 Sat.

13 Mile & John R Madison Heights 585-6353	6477 Highland Rd. Pontiac, Mich.	14 Mile-3 Blks. E. of Coolidge Royal Oak 280-0202
---	-------------------------------------	---

REDFORD SPEED EQUIPMENT

Of Special Interest

SIDEMOUNT HEADERS
ROLL BARS
KONI SHOCKS
SWAY BARS
DRIVING LIGHTS
COMP. SEAT BELTS
AND HARNESES



RACING TIRES AND WHEELS

STEWART-WARNER INSTRUMENTS & FUEL PUMPS

Other Necessities

GENERAL KINETICS
RACING CAMS
LAKEWOOD
HOLLEY CARBS
TRANS AM OIL PANS
RACING OIL
HOOKER HEADERS
HURST
MALLORY & ACCEL
IGNITION SYSTEMS

Genuine
G.M.
R & P Parts

532-2050 or 532-6223

26486 GRAND RIVER

10-8 Mon-Fri 10-6 Sat



CIBIE MARCHAL PARIS-RHONE

FOR

PORSCHE
SAAB
RENAULT
PEUGEOT

(313) 294-1700

Manufacturers of Quality Automotive
Performance Lighting Products
And Electrical Components

St. Clair Shores, Mi. 48082

New, Used reproduction Parts and Accessories
Custom Paint and Body Repair

BOJAX

HI-TEK AUTOMOTIVE

design and fabrication

DOUG FEHAN
BOB FEHAN
313/549-5410

4712 Fernlee
1st Block East of Coolidge, S. of 14
Royal Oak, Michigan 48073



photo by john willyard

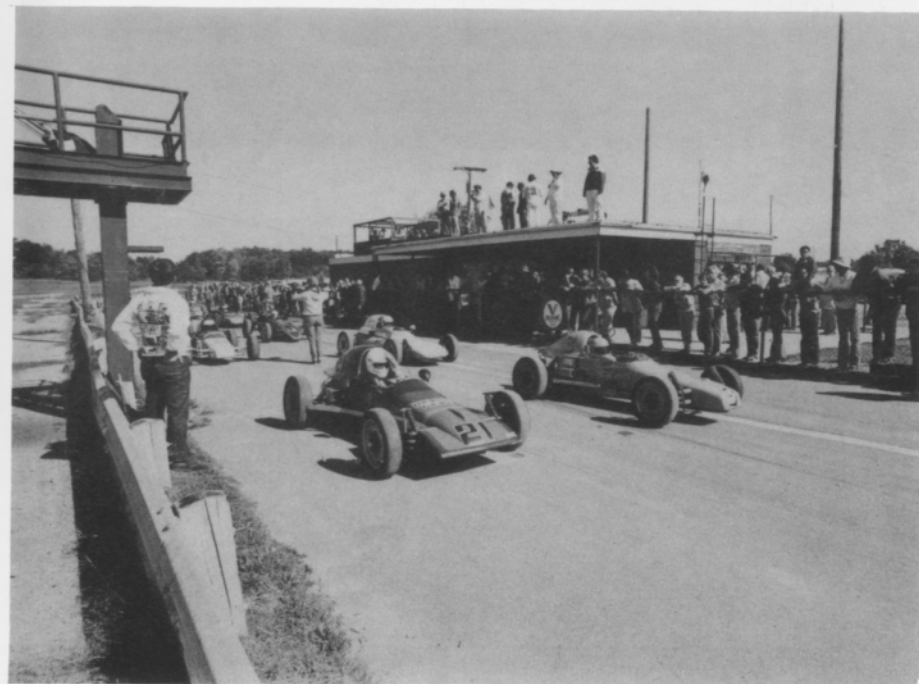
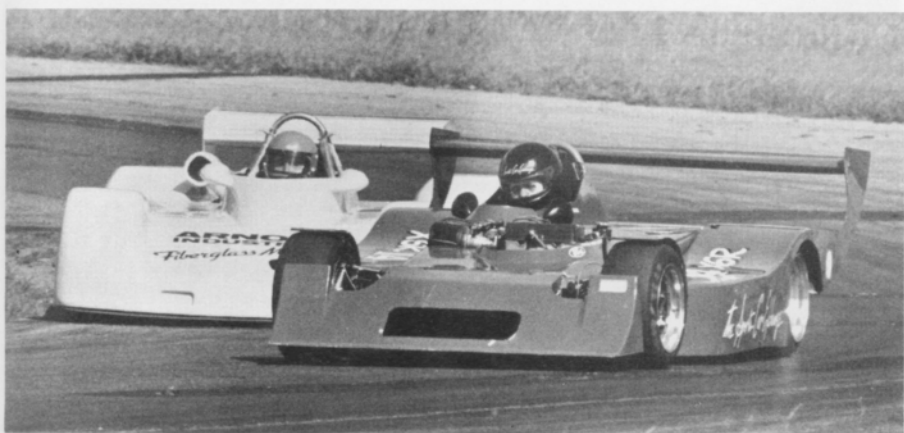


photo by john willyard



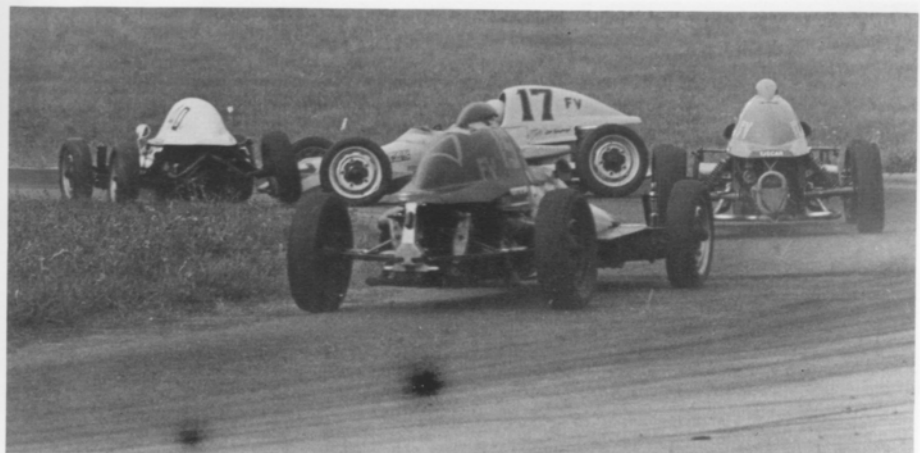
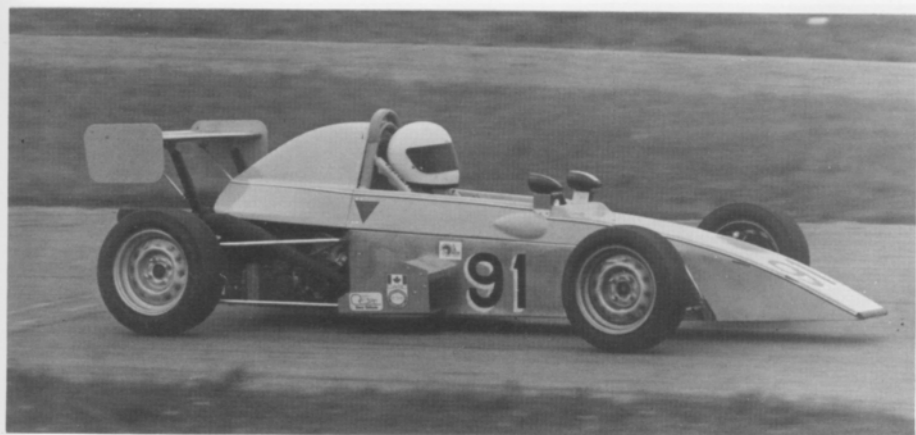


photo by al bizer



photo by al bizer



photo by al bizer



photo by al bizer

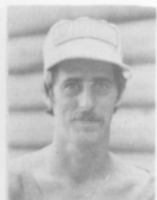


photo by john williard



photo by john gaciocch

1981 top ten drivers



1

lee mcLeod
clarkston, michigan



2

ken nelson
canton, michigan



3

hugo carlson
ferndale, michigan



4

paul nawrocki
berkley, michigan



5

jon craig horgas
west bloomfield, mi

6



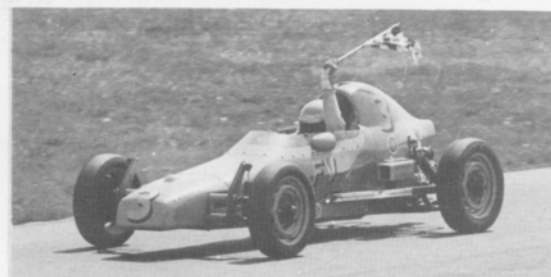
mike white
detroit, michigan



7



dennis hamilton
dearborn heights, mi



8



ross becker
utica, michigan



9



ron mcconkey
milford, michigan



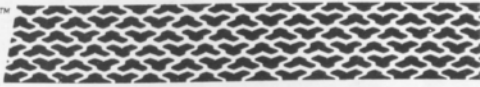
10



jerry morlewski
detroit, michigan



T/A HIGH TECH
RADIALS



BFGoodrich

*The Radial Born
of High Technology.
Designed For The Driver
That Demands The Most From His Tires.*



T/A 70



T/A 60



T/A 50

*The Street Radial
Designed To Win At The Track.*



All-Terrain T/A™



Sport Truck T/A™

*The first radial light truck tire
specifically engineered for on or off-road use.*



Mud-Terrain T/A™

BFGOODRICH
2330 S. Dort Hwy.
Flint, Mi 48507
232-0168

BFGOODRICH
28501 Dequindre
Madison Hgts., MI 48071
543-4260

BFGOODRICH
15150 Michigan Ave.
Dearborn, MI 48126
581-6900

We accept M/C, Visa, Diners, American Express Carte Blanche



photo by al bizer

RE/MAX

CENTRAL



2610 north woodward avenue
royal oak, michigan 48073
phone: (313) 549-4404



*Above
the
Crowd!*

RE/MAX STANDS FOR REAL ESTATE MAXIMUMS. THIS MEANS MAXIMUM SERVICE AND MAXIMUM ASSISTANCE. FOR INFORMATION ON VACATION TIME SHARING OR FOR A COMPLIMENTARY MARKET ANALYSIS OF YOUR PRESENT HOME, CALL:

Pete Wickenden
Res. 542-4365
Off. 549-4404

Phil Blagburn
Res. 548-2941
Off. 549-4404

Crankshaft Craftsman Inc.



CRANKSHAFT GRINDING
CAMSHAFT GRINDING
CRANKSHAFT WELDING
POLISHING-STRAIGHTENING
HIGH PERFORMANCE WORK
BEARINGS AVAILABLE

QUALITY BEFORE QUANTITY

RUSS TAYLOR - PRESIDENT

(366-0140)

2819 JEROME EAST OF I-75 • DETROIT



**Accessory
House inc.**

313-548-4488

**23257 woodward
ferndale mi. 48220**

Quartz Lighting

ANSA
HELLA

Suspension

KONI
KYB

Exhaust Systems

CIBIE

Seating

RECARO

Sports Car Apparel

Stewart Warner Instruments

Racing Equipment

BELL
YANKEE

Rollbars

Air Dams

Vast Selection

Import Auto Adornments

World's Finest Manufacturers

For The Discriminating Driver

BOB OWENS



NISSAN

DATSUN

**5436 JACKSON RD.
ANN ARBOR**

995-9502



photo by al bizer

(313) 542-6150

FOREIGN AUTOMOTIVE SUPPLY, LTD.
PARTS FOR ALL IMPORTS

HOURS: MON.-FRI. 8:30-7:00
SAT. 9-5

380 W. 11 MILE RD.
(5 BLKS. EAST OF THE I-75)
MADISON HEIGHTS, MI 48071

Foreign
Car
Specialists



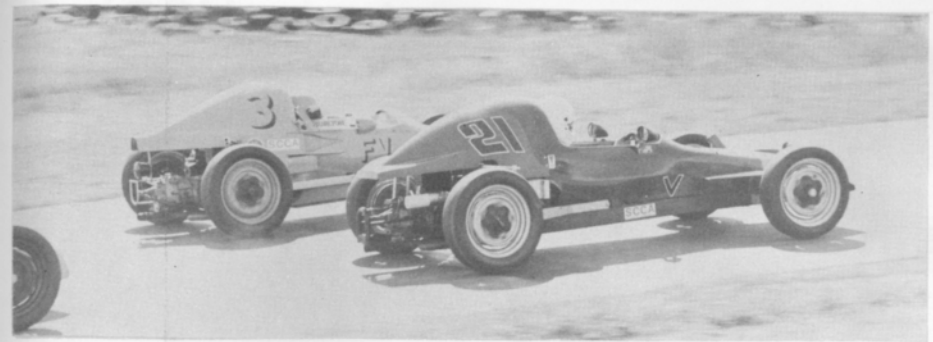
AUTOMETRIC BODY SHOPS

Expert Collision & Paint Service
American .. Import

818 N. Main
Royal Oak, MI
398-0200

8645 E. 10 Mile
Centerline, MI
757-7491

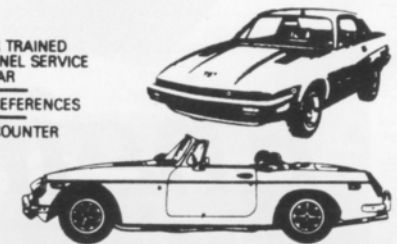
24465 Gratiot
East Detroit, MI
774-3455



IMPORTED CAR SERVICE CO.

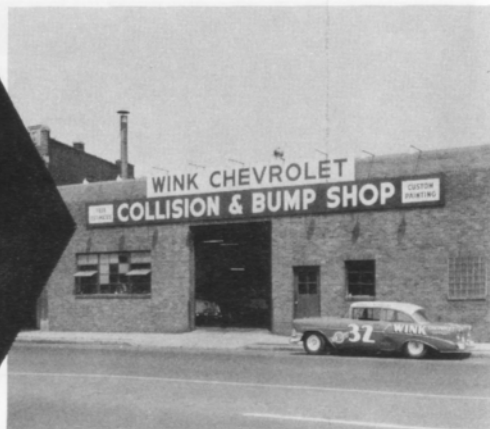
Call 293-5566
31529 UTICA RD., FRASER
BET. 13 & 14 MILE

- LET OUR TRAINED PERSONNEL SERVICE YOUR CAR
- LOCAL REFERENCES
- PARTS COUNTER



THINK WINK

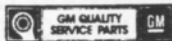
CARS & TRUCKS



Satisfying Car Buyers For Over 42 Years

BILL WINK CHEVROLET

10700 FORD RD., BET. WYOMING & SCHAEFER
DEARBORN, MICHIGAN



582-5400

"KEEP THAT GREAT GM FEELING WITH GENUINE GM PARTS"

RACELAND

AUTO SUPPLY

SPECIALISTS IN ALL PHASES OF

HIGH PERFORMANCE WORK

COMPLETE LINE OF BRAND NAME &
CUSTOM PARTS & ACCESSORIES

COMPLETE MACHINE SHOP

• ENGINE BLUEPRINTING • BALANCING (ALL WORK DONE IN OUR OWN SHOP)

SOUTHFIELD

355-2288

26700 W. 8 MILE RD.
BET. INKSTER & TELEGRAPH



OPEN 6 DAYS A WEEK — CLOSED SUNDAY





Engineered to Excite.

GTV 6/2.5 Coupé

Feel the excitement of driving the car Road & Track called "the best Sports GT for the 80's," the Alfa Romeo GTV 6 Coupé. The most powerful car Alfa Romeo has ever sold in the United States. Road & Track summed up the GTV 6 thusly, "No twist, no wiggle, no rattles, no bad habits. Real quality."

Feel the history. Feel the excitement. Test drive the Alfa Romeo GTV 6 today.

See the Alfa Romeo
GTV 6/2.5 Coupé
and Spider Veloce at:

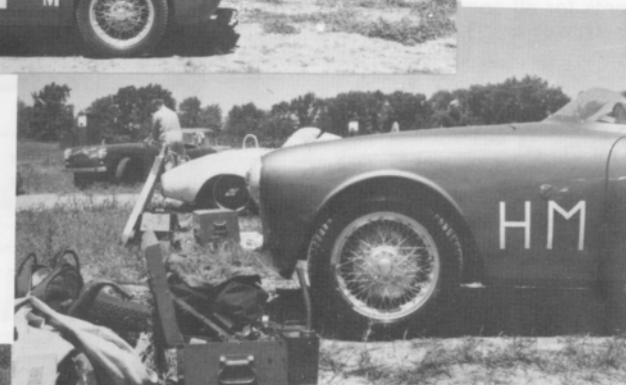
Alfa Romeo 

The Sports Car Exchange

MICHIGAN'S EXCLUSIVE AUTHORIZED AGENT FOR FERRARI, MASERATI AND ALFA ROMEO
14510 MICHIGAN AVE. DEARBORN, MICHIGAN 313-581-6222

Looking back
with Bizer

PADDOCK SCENES
JUNE 1960

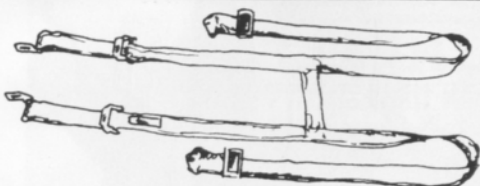


DID HERBIE
GET HIS
START HERE?

R.J.S. SAFETY EQUIPMENT

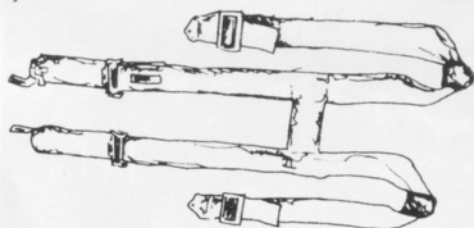
(Formerly Bob's Safety Equipment)

23506 John R. Rd. Hazel Park, Mi. 48030 (313) 548 - 5727



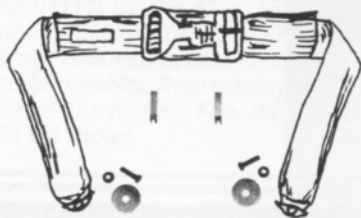
2" SHOULDER HARNESS

Meets new SCCA mandatory safety requirements for all competition cars. To install, you must have new "H Type" floor mount harness. 2" style.



3" SHOULDER HARNESS/SPRING

New "H Type", floor mount harness, 3" style.



50502 3" LAP BELTS

4130 chromoly aircraft material used in all hardware for maximum strength. Features no side adjusters to rub hips. Instead, they are connected and contained in the main buckle unit, one on each side. Adjustable 18" to 60", with special tension springs kits also available.



HI-TOP SHOES,

White, Fully Nomex, Inside and Out.



ORANGE NOMEX GLOVES

White or orange.

- NOMEX UNDERWEAR
- NOMEX SOCKS
- NOMEX BANDANA
- NOMEX RACE HOODS, 2-Layers, Eye Opening or Open Face.
- NOMEX DRIVING SUITS, Custom Made, 1-Layer or 2-Layers. Your choice of colors, Blue, White, Red, Yellow, Color Stripes, Name
- GOGGLES
- FIRE EXTINGUISHER
- HALON 1301 SYSTEMS
- ADJUSTABLE ANTI-SUB BELTS

We are manufacturers for all types of Racing Equipment For:
ARC • USCA • NASCAR • ARCA • IHRA • AHRA • NHRA
UDRA • SCCA. All approved.

FUEL CELLS

average lap speed chart

Min/Sec	MPH	Min/Sec	MPH	Min/Sec	MPH
1:00	85.326	1:17	66.488	1:34	54.463
1:01	83.927	1:18	65.635	1:35	53.890
1:02	82.574	1:19	64.805	1:36	53.329
1:03	81.263	1:20	63.995	1:37	52.779
1:04	79.993	1:21	63.204	1:38	52.240
1:05	78.762	1:22	62.434	1:39	51.713
1:06	77.569	1:23	61.681	1:40	51.196
1:07	76.411	1:24	60.947	1:41	50.689
1:08	75.288	1:25	60.230	1:42	50.192
1:09	74.197	1:26	59.530	1:43	49.704
1:10	73.137	1:27	58.846	1:44	49.227
1:11	72.106	1:28	58.176	1:45	48.758
1:12	71.105	1:29	57.523	1:46	48.298
1:13	70.131	1:30	56.884	1:47	47.846
1:14	69.183	1:31	56.259	1:48	47.403
1:15	68.261	1:32	55.647	1:49	46.968
1:16	67.363	1:33	55.041		

The Waterford Hills Road Course is 1.4221 miles long (7,509 ft. center line of track). To determine the speed of any individual car, time it for one complete lap and read off the speed from this table.

class records

ASR	Ed Murray	Chevron	1:10.9	9/81
CSR	Evan MacDonald	M - 2	1:10.5	9/78
DSR	Don Clining	Meister Honda	1:20.8	5/75
S/2000	Larry Campbell	Lola	1:11.5	9/79
CP	Wayne Rogers	Datsun 240Z	1:19.4	8/78
DP	Karl Nilsson	Porsche 914	1:17.5	9/79
EP	Lou Livengood	Porsche 356	1:16.3	6/80
FP	Barry Hartzel	MG Midget	1:16.2	7/78
GP	Kirk Carlson	MG Midget	1:18.0	8/81
HP	Paul Cameron	Sprite	1:20.4	7/78
GT-1	Dave Buist	Corvette	1:15.4	6/81
GT-2	J. Byron Walker	Datsun 510	1:16.5	9/80
GT-3	Dave Huard	Toyota	1:18.9	7/80
GT 4	Dan Hill	Mini Cooper	1:19.4	8/81
SS/A	Bobby Fehan	Mustang II	1:27.4	7/80
SS/B	Thad Gutowski	Scirocco	1:29.6	9/76
SS/C	Marc Robling	Pinto	1:30.1	9/80
FF	Vince Muzzin	Royale	1:09.4	6/78
FV	Lee McLeod	Lynx	1:15.7	7/81
**F/ALTC	Vince Muzzin	March	1:06.7	5/75
F/CNTL	Charles Van Acker	Lola	1:09.8	8/79
F4	Robert Long	Xpit	1:13.2	9/79
F440	Greg Assenmacher	Stinger	1:19.0	7/80

**track record

racin classes

To insure fairness in competition, all road racing cars are grouped into racing classes by the Sports Car Club of America in its General Competition Rulebook (GCR). Waterford Hills Road Racing observes the GCR regulations with some minor exceptions.

The five competition groups are: Production (sports cars), Showroom Stock (GT cars and sports cars with minimal modification), Sports Racing (highly modified engine and body over wheels), GT (enclosed cockpit passenger cars and former big production cars), and Formula (open wheels and single cockpit). Race groups are subdivided into classes of equally competitive cars based upon engine size and handling characteristics.

The cars listed below are representative of their racing classes and include most of those you will see at Waterford Hills

PRODUCTION

- CP** Datsun "Z" series, Mazda RX7, Porsche 914/6 & 924 Turbo, Sunbeam Tiger, Triumph TR-6 & TR-8
- DP** Lotus Super 7, Datsun 2000, Triumph GT-6, Yenko Stinger, Porsche 914-S
- EP** Porsche 356 series, MGB, Opel GT, Porsche 914/4, Triumph TR-4
- FP** Saab Sonnet, MG Midget Mk III & IV, Lotus 7, Triumph Spitfire Mk III & IV & 1500
- GP** MG Midget Mk I & II, Triumph Spitfire Mk I & II, MGA, Porsche Coupe, Austin Healy Sprit 1100, Fiat X1/9, Fiat 124 Spider
- HP** Austin Healy Sprite Mk I & II, Fiat 850, MG Midget 948, Fiat Abarth

SHOWROOM STOCK

- SSA** Porsche 924, Datsun 280Z, Capri V-6, Mustang Cobra, Mazda RX-4 & RX-7
- SSB** Datsun 200 SX, Fiat 124, Scirocco, Dodge Colt
- SSC** Pinto, VW Rabbit, Renault LeCar, Mustang 2.3, Fiesta, MGB Pontiac Astre, Honda Civic, Toyota Carolla

SPORTS RACING

- ASR** over 1300 cc but less than 6000 cc
- CSR** over 850 cc up to 1600 cc (with restrictions)
- DSR** below or equal to 850 cc
- S/2000** uses Ford 2000 cc overhead cam engines only

GT CLASSES

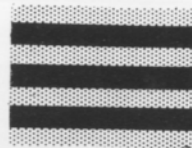
- GT-1** Camaro, Dodge Aspen, Ford Cobra II, Corvette, Shelby GT-350, Porsche 911 SC
- GT-2** Opel 1900, Datsun 510 1800, Mustang 2300, Pinto 2000 & 2300, Cosworth Vega.
- GT-3** Ford Escort/Lynx, VW Scirocco, VW Rabbit, Datsun 200 SX, Mazda RX 2, Toyota Celica, Pinto 1600, Fiat 124 Sports Coupe, Datsun 510 1600, Dodge Colt, Toyota Carolla 1600
- GT-4** Honda Civic, Austin/Morris Mini Cooper, VW 1300, NSU TT, Renault LeCar, Fiat 124 1200, Toyota Corolla 1200

FORMULA

- FF** Formula Ford - Cortina or Pinto 1600 cc engine, strict weight to engine ratio with driver's weight included in total legal weight, very equal class
- FV** Formula Vee - all Volkswagen components, 1200 cc engine, driver's weight included in total legal weight, very competitive class
- F/AKTC** Formula Atlantic - choice of engines in over 1100 cc up to 1600 cc range, wings and other modifications allowed, not meant to be an inexpensive race car
- F/CNTL** Formula Continental - engine up to 1100 cc, rear wings allowed, combines the modifications of the previous Formula C and Formula Super Vee classes
- F440** Formula 440 - utilizes Fuji two-cycle snowmobile engines and drive train, rigid suspension, wings permitted
- F4** Formula Four - Canadian class, motorcycle engine power plant, engine size determines weight and transmission allowed

flags

yellow with red stripes



Take care, oil has been spilled or a slippery condition exists somewhere in your vicinity. Look at the track surface.

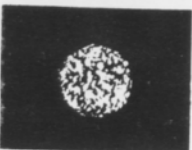
black



Sloppy or dangerous driving. Complete the lap you are on, then stop at the Start/Finish line for consultation with the Chief Steward.

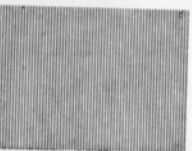
Waving black flag (displayed on all corner stations) means the race is stopped. Slow down immediately and proceed around the track with extreme caution to the pit lane for a re-start.

black with orange ball



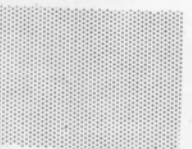
(Meatball black flag) There is something mechanically wrong with your car. Proceed to your pits at reduced speed.

green



(Or no flag) Course is clear.

yellow



(Stationary) Take care, danger, no passing.
(Waving) Great danger, be prepared to stop, no passing.

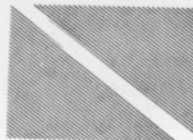
red



Stop immediately, clear the course as well as circumstances permit; the race has been stopped.

Waving red (displayed by the Starter only) means the race is stopped, slow down immediately and proceed around the track with extreme caution to the pit lane.

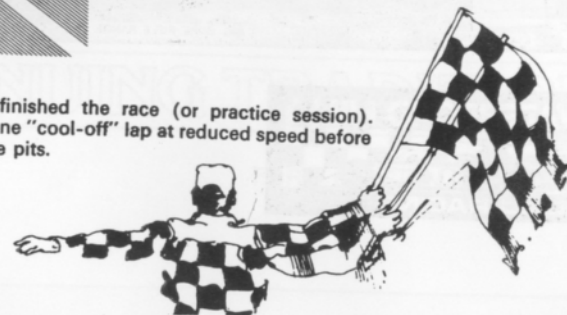
blue with diagonal yellow stripes



(Motionless) Another competitor is following you closely.

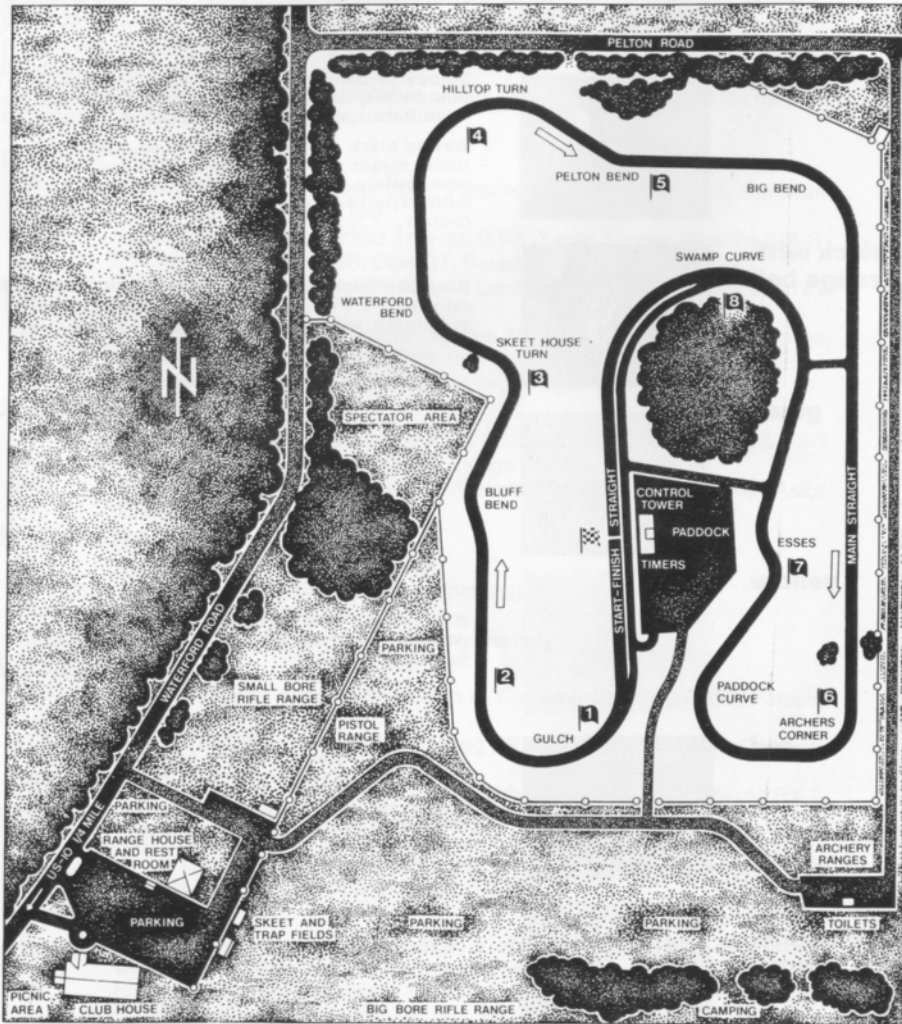
checkered

You have finished the race (or practice session). Complete one "cool-off" lap at reduced speed before entering the pits.



waterford hills course map

a 1.5 mile
asphalt road course
at waterford,
michigan



THE SPIRIT OF COMPETITION



A CONTINUING TRADITION

FORD DIVISION

