

**FALVEY**  
MOTORS



**THE BEST JAGUARS EVER BUILT:**

There is no formula for the creation of a classic. Yet, for more than 50 years Jaguar has given the world classic after classic.

Here are two of the finest Jaguars ever built: the magnificent Series III sedan and the awesome V-12 powered S-type GT.

Both share the inimitable Jaguar qualities of graceful design, quick response and agile handling. Both are equipped with precise power rack

and pinion steering, racebred four-wheel independent suspension and decisive four wheel power disc brakes.

Inside, Jaguars provide a level of luxury and quiet seldom, if ever, equalled in a high performance motorcar. Test drive them today. ENJOY TOMORROW BUCKLE UP TODAY.

**JAGUAR**  
A BLENDING OF ART AND MACHINE



15 Mile (Maple) between Coolidge and Crooks

40 years...Creating the Competition!!

**FALVEY**

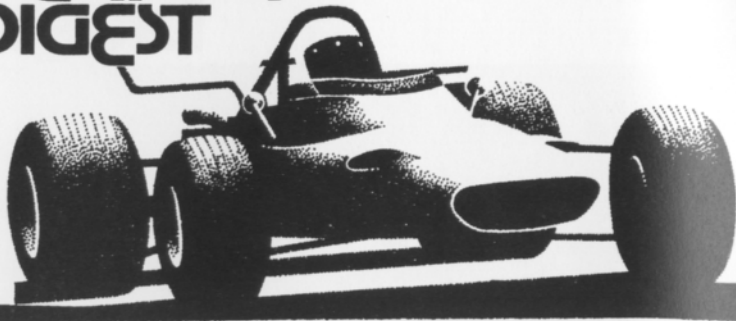
**WATERFORD HILLS**  
**ROAD RACING** oakland county sportsmens club



**1987**  
**WATERFORD**  
**DIGEST**

MAY  
\$2.00





## The Inside Line

Welcome to the Waterford Hills Road Racing May Race Weekend. This is the second race weekend of WHRRI's twenty ninth year. A look at the entry list is a view into the past with Porsche speedsters and MG's as well as a look to the future with Pontiac Fiero's and fuel injected Turbo's.

If our sixty plus entrants in our April drivers school is any indication we are in for full grids and close racing. The improved touring (ITA - ITB - ITC - ITS) classes seem to be partly responsible for this increased participation. These classes are similar to Showroom Stock classes but are made up of older cars and are allowed a few more modifications. Both must run on street radial tires and not modify the body work. The IT classes may add anti sway bars, change shocks, exhaust systems and lower the car. The low cost and preparation makes this a very appealing class. We have returned to a racing class similar to those of 29 years ago.

The August 2 - 3 Meadowbrook Historic Race Weekend gives all of us the chance to hear and see the cars that started all of this.

Congratulations to the 1986 TOP TEN DRIVERS (see page 10 - 11). These are the ten drivers scoring the most points in their class competition during the 1986 racing season.

Stop at the Waterford Boutique for the Silver Digest for a complete history in word and photos. The Boutique is located on the spectator hill and in the tower in the pits. T-Shirts, posters, and other racing stuff also available.

Enjoy Waterford's 29th. Spring sprints.

Dan Hill

AL BIZER



## Officials

President	Don Burry
Secretary	Burck Grosse
Vice President	Dave Shook
Director of Racing	Bernie Fung
Race Coordinator	Dave Hinman
Chief Steward	Barb Kitch
Chief of Flags & Communications	Willy Perez
Chief Registrar	Carol Humphreys
Chief of Safety	Blackie Meyers
Chief of Timing & Scoring	Peggy Krom
Chief Starter	Hal Goff
Chief of Tech	Dave Gernaey
Asst Chief	Eddie Atkinson
	Bill Tann
Stewards of the Meet	Bernie Fling
	Peter Quenet
Licensing Chairman	Ray Krom
Membership Chairman	Diane Wollesen
Trophy Chairman	Cynthia Kempton
Grid Marshall	Emily Whitehead
Paddock Marshall	Bob Albo
Course Control	Blackie Meyers
Sound Control	Roger Roeske
Director of Facilities	Jim McIntosh
Controller	Danny MacDonald
Newsletter Editor	Jack Pringle

## NOW WHEN YOU ENTER THE WORLD OF BMW SPORTS SEDANS, YOU CAN BRING YOUR ENTIRE FAMILY.

Typically, 2-door sports sedans have been the exclusive province of drivers with no real use for the backseat.

The new BMW 4-door, 3-Series sports sedans have opened their doors to a more diverse group: those who desire exhilarating performance, but have something special to put in the backseat—a family.

If you'd like to test-drive one of our new 4-door BMW's, bring your entire family to visit us.



THE NEW BMW 4-DOOR  
325 AND 325e



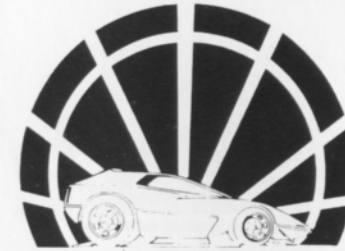
**THE ULTIMATE DRIVING MACHINE.**

©1986 BMW of North America, Inc. The BMW trademark and logo are registered

*Erhard B.M.W. Inc.*

24130 Telegraph Rd. at 9½ Mile, Southfield, 352-6031

Complete Line of  
Brand Name and  
Custom Parts and  
Accessories



Specialists in all  
phases of High  
Performance Work

## RACELAND AUTO SUPPLY PERFORMANCE RACING ENGINES

26700 W. 8 Mile Rd., Southfield, MI 48034

355-2288

Bet. Inkster and Telegraph

COMPLETE MACHINE SHOP

OPEN 6 DAYS A WEEK – CLOSED SUNDAY

### RACING WHEELS **Panasport**

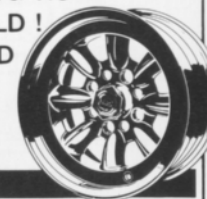


FORMULA FORD WHEELS  
FOR  
SWIFT · CITATION · REYNARD · OTHERS

- STRONG, LIGHT WEIGHT ALUMINUM
- BRAKE COOLING ONE PIECE DESIGN
- USES STANDARD LUG NUTS
- GOOD LOOKING GOLD!
- REASONABLY PRICED

**STUFF**  
overill racing

(313) 350-2881



### **STUFF** overill racing

AUTHORIZED DEALER FOR:

- LOLA CARS ·
- HEWLAND SPARES ·
- KONI SHOCKS ·
- FERODO BRAKES ·
- MOMO STEERING WHEELS ·
- LIFELINE FIRE SYSTEMS ·
- PULSAR BATTERIES ·
- HYLOMAR PRODUCTS ·
- GAUGES ·

AND MUCH MORE...

parts and service for serious racing

**CRANE**  
CROCKERS

**WAR**  
CYCLONE  
ANTI-REVERSIONARY  
RACING HEADERS



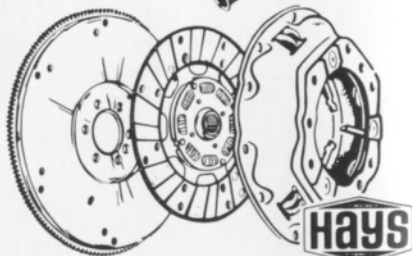
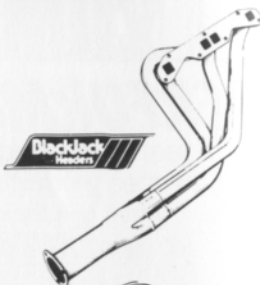
## Redford Speed

26577 GRAND RIVER  
532-2050 or 532-6223  
10-8 MON-FRI 10-6 SAT

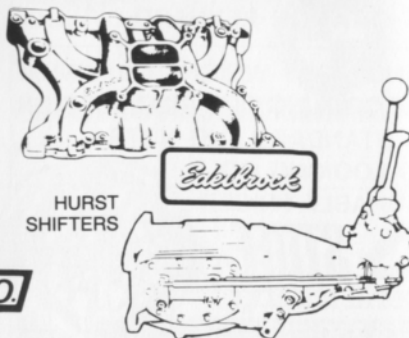
- Of Special Interest:
- SIDEMOUNT HEADERS
  - ROLL BARS
  - KONI SHOCKS
  - SWAY BARS
  - DRIVING LIGHTS
  - COMP. SEAT BELTS AND HARNESSSES
  - RACING CAMS
  - LAKEWOOD
  - HOLLEY CARBS
  - TRANS AM OIL PANS
  - RACING OIL
  - HOOKEE HEADERS
  - HURST
  - MALLORY & ACCEL
  - IGNITION SYSTEMS



SYMBOL OF  
**SW**  
EXCELLENCE



**CRANE**  
Cams



**MR. GASKET CO.**

---

**EF Hutton**  
Great Lakes Region

---

SMR/PCA MEMBER

**BILL  
COOK** PORSCHE

"NOBODY EVEN COMES CLOSE"



37901 Grandriver at 10  
Farmington Hills

**471-0044**

OPEN MONDAYS TILL 9:00  
TUES THRU FRI TILL 6:00

**BILL  
COOK** mazda

37911 Grand River at 10 Mile Rd.  
Farmington Hills, MI 471-0800



**BILL  
COOK** mazda

*"Where Excellence is the Standard, Not the Option"*

# 1986 TOP TEN DRIVERS



1

Greg Wilkenson, FFR



2

Ray Krom, SSR



3

Skip Froh, EP



4

Cal Cortright, ITC



5

Tom Shaver, FV



6

Tom Kozak, SR



7

Jerry Morlewski, GT-4



8

Ken Nelson, GT-3



9

Michael Neal, SR



10

Peggy Krom, ITB



AL BIZER

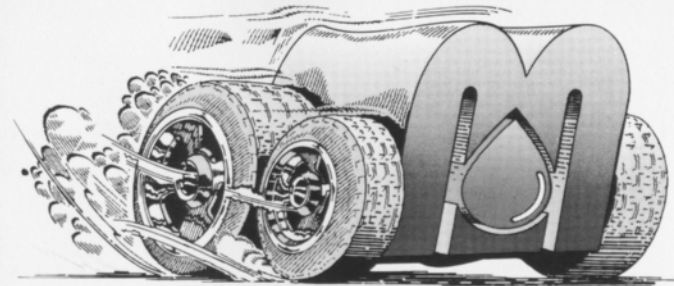
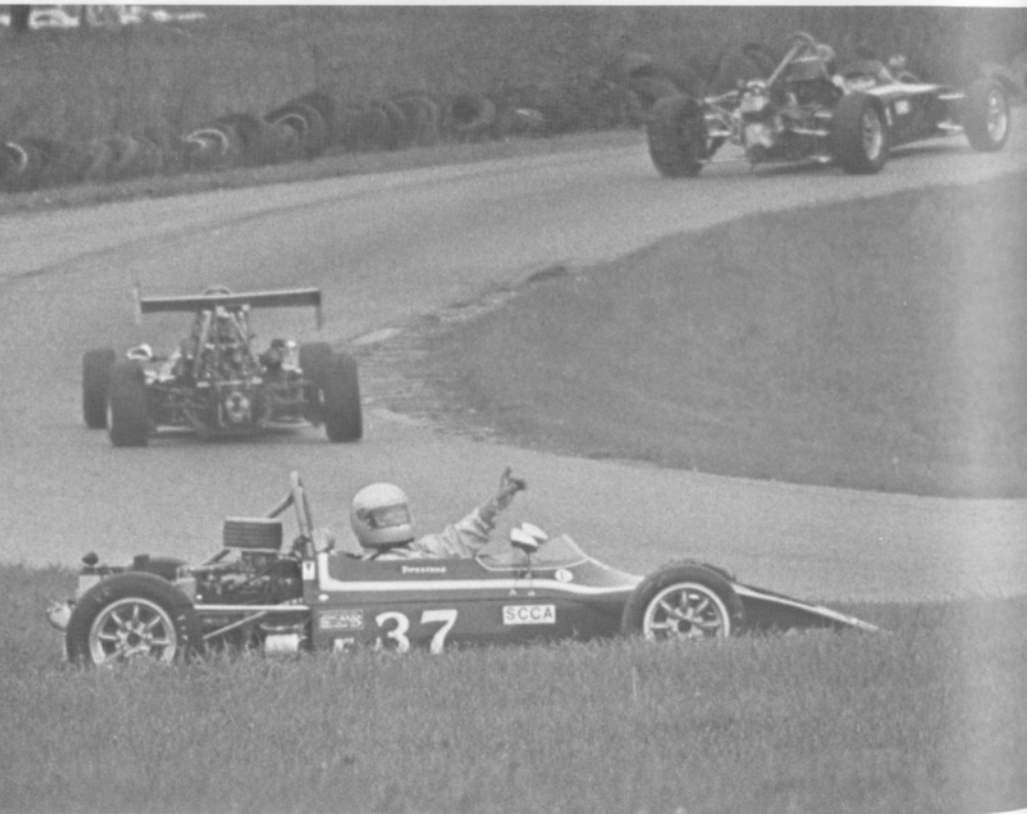


AL BIZER

PHOTOS BY DON CASTLE







## See you in the winner's circle!

Give your car the competitive edge, with Mid-States Petroleum, the official supplier of Union 76 racing gasoline at Waterford Hills. We also carry CAM-2 and Howell racing gasolines, racing methanol, motor oils, and lubricants, that will have you leading the pack. Call Mid-States today and get the edge!



**Mid-States Petroleum, Inc.**  
P.O. Box 186 • Troy, Michigan 48099  
In Michigan, call 1-800-482-2611  
For rest of USA, call 1-800-554-0500



**WILLIAM A. KIEFER**  
President

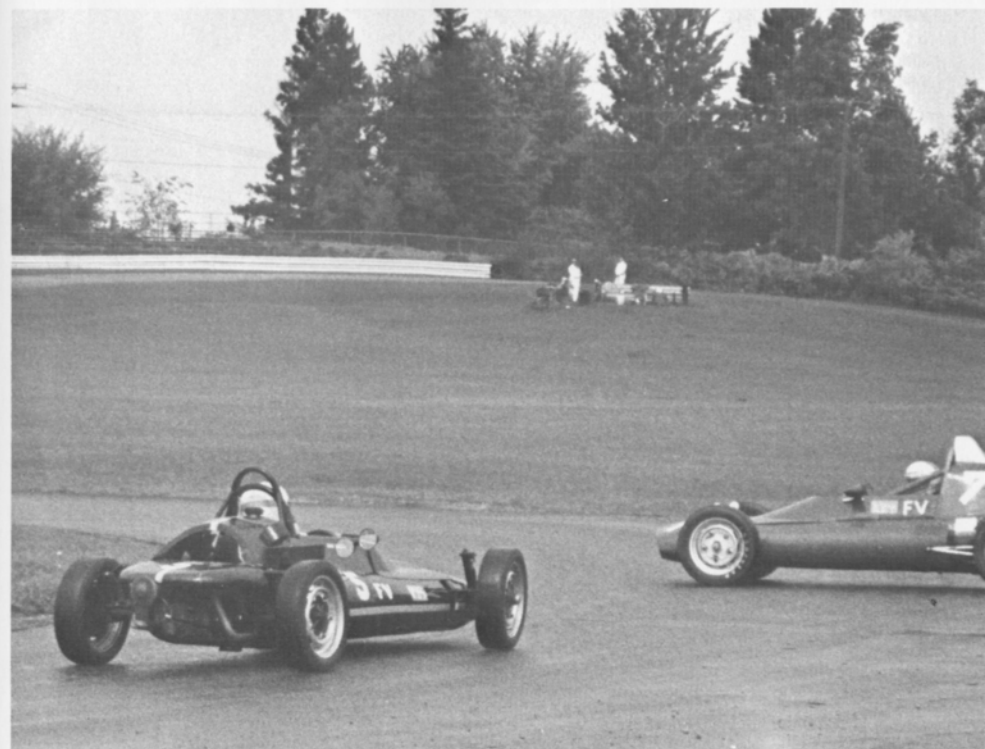
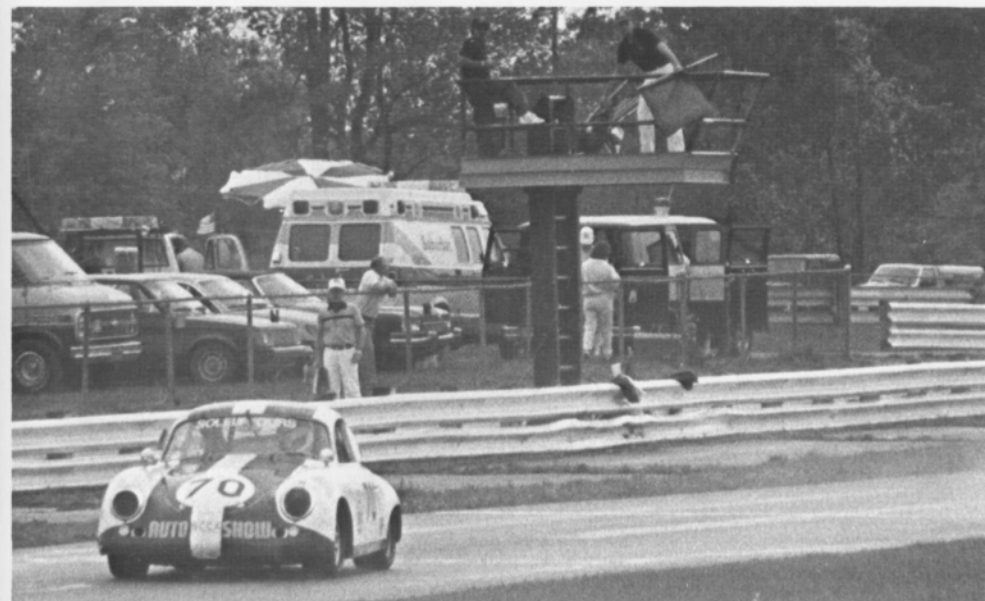
**SCOTT W. KIEFER**  
Vice-President

*Micro Gauge, Inc.*

CNC Machining  
O.D. Grinding  
Precision Honing

(517) 546-7036

5910 E. Grand River  
Howell, MI 48843

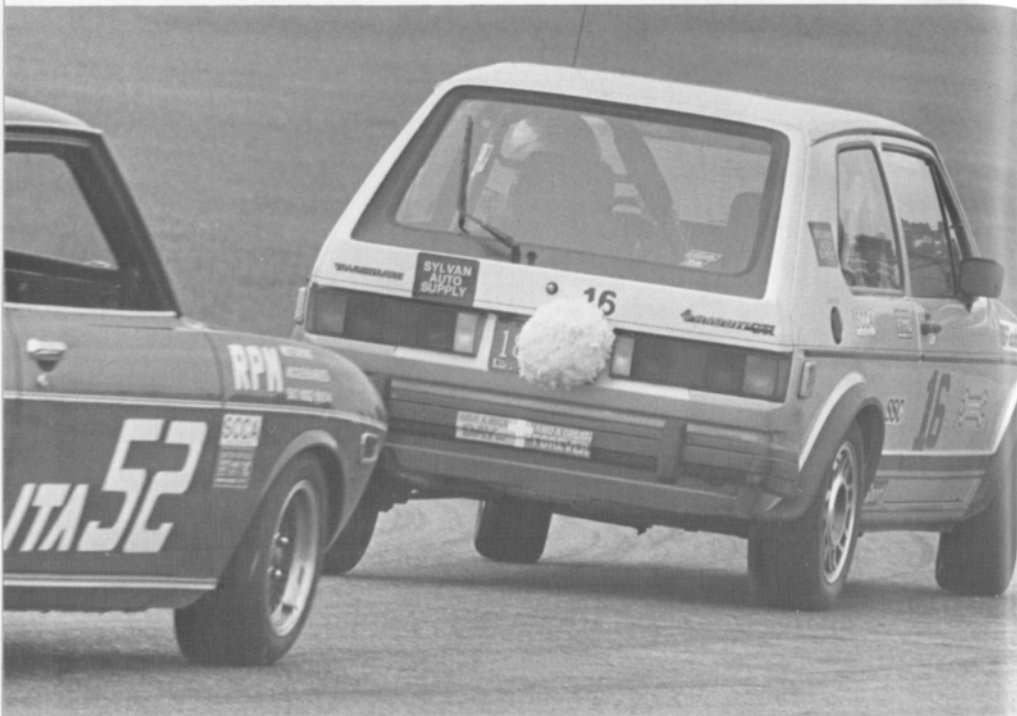




# WE'RE BACK!

**1985 THE CHAMPIONSHIP SEASON • IMSA CAMEL GTO:** CHAMPION JOHN JONES, MOTORCRAFT FORD MUSTANG — FORD WINS: 14 OUT OF 17 RACES — 12 POLE POSITIONS — 13 FASTEST RACE LAPS — MANUFACTURERS' CHAMPIONSHIP • **NASCAR WINSTON CUP:** FORD WINS 14 OF 28 RACES — BILL ELLIOTT, COORS/MELLING FORD THUNDERBIRD: RECORD 11 NASCAR SUPERSPEEDWAY WINS — 11 POLE POSITIONS — ELJER DRIVER-OF-THE-YEAR AWARD — VOTED NASCAR'S MOST POPULAR DRIVER — ALL-TIME SEASON EARNINGS RECORD OF \$2,383,186 — WORLD STOCK CAR QUALIFYING RECORD AT 209.398 MPH — WORLD RECORD FOR 500-MILE RACE AVERAGE SPEED AT 186.288 MPH • **NHRA PRO STOCK:** SIXTH-TIME CHAMPION BOB GLIDDEN, CHIEF AUTO PARTS FORD THUNDERBIRD — WINNER 5 OF 13 NHRA EVENTS — TOP QUALIFIER 10 TIMES — SET NHRA NATIONAL PRO STOCK RECORDS FOR TOP SPEED (186.87 MPH) AND ELAPSED TIME (7.49 SECONDS) — 4 ELAPSED TIME TRACK RECORDS — 2 TOP SPEED TRACK RECORDS • **LYN ST. JAMES, FORD MUSTANG PROBE:** FASTEST WOMAN IN RACE HISTORY ON A CLOSED COURSE AT 204.233 MPH — SET 13 NATIONAL AND INTERNATIONAL SPEED RECORDS • **NASCAR WINSTON CUP ROOKIE OF THE YEAR:** KENNY SCHRADER, SUNNY KING FORD THUNDERBIRD • **SCORE/HDRA OFF-ROAD CHAMPIONSHIP:** CLASS 7 CHAMPION MANNY ESQUERRA, CHIEF AUTO PARTS FORD RANGER — WINNER 5 OUT OF 10 EVENTS — OFF-ROAD RACING "TRIPLE CROWN" WINNER FOR SECOND TIME — FIFTH CLASS 7 CHAMPIONSHIP IN 6 YEARS • **NHRA FUNNY CAR:** CHAMPION KENNY BERNSTEIN, BUDWEISER KING/MOTORCRAFT FORD TEMPO — WINNER 6 OF 13 NHRA EVENTS — TOP QUALIFIER 6 TIMES — 5 ELAPSED TIME TRACK RECORDS — SET NHRA ELAPSED TIME NATIONAL FUNNY CAR RECORD (5.569 SECONDS)

Racing into the future. 



KAMEI • BOGE • LÖBRO • LEISTRITZ • BILSTEIN • HELLA • BOSCH • RONAL



## IMPORT SERVICE SPECIALISTS

DEDICATED TO DOING IT RIGHT FOR OVER 14 YEARS

**681-8081**                      **335-5424**  
 3080 W. HURON                1803 ORCHARD LK. RD.  
 WATERFORD                    BLOOMFIELD TOWNSHIP

BOGE • LÖBRO • LEISTRITZ • BILSTEIN • HELLA

KAMEI • BOGE • LÖBRO • LEISTRITZ • BILSTEIN • HELLA • BOSCH • RONAL



DON CASTLE

## At your service . . . with trained technicians.

Trust your Subaru to the experts. Complete bumper-to-bumper service and maintenance.



**THE 1986 SUBARU®**  
Inexpensive. And built to stay that way.

### M & W MOTORS, INC.

44756 N. Gratiot, MT CLEMENS, MI 48043 — 465-2661



**HOURS:**  
**MON. 8-7**  
**TUES. Thru FRI. 8-6**  
**SAT. 8-5**

**Oxford**  
 1045 N. Lapeer Rd.  
 (Next to the  
 Nugget Restaurant)  
 628-7440

**Waterford**  
 3098 M-59  
 (East of Elizabeth  
 Lake Road)  
 682-8380



**WATCH FOR THE  
 TOP VALUE  
 MUFFLER SHOP'S  
 FORMULA FORD**

**BE A WINNER with these SPECIALS!**  
 at  
**TOP VALUE Muffler Shops**

**—Mufflers & Brakes—  
 CUSTOM PIPE BENDING**

**WE WILL HONOR  
 AND BEAT ANY  
 PRICE FOR  
 EXHAUST, BRAKES  
 & SHOCKS**

Coupons must be presented  
 before job quote.

**COUPON  
 FREE**

**18 Point Chassis Inspection  
 On ALL Vehicles**

This offer good w/coupon thru 10-25-86  
 Clip & Use

**COUPON  
 OIL - LUBE - FILTER**  
 Up to 5 Quarts of Valvoline  
 10W30 Oil  
**\$9.88**

This offer good w/coupon thru 10-25-86  
 Clip & Use

**COUPON  
 MUFFLERS**

**\$24.95 INSTALLED  
 MOST U.S. CARS**

Includes Clamps • Lifetime Warranty  
 This offer good w/coupon thru 10-25-86  
 Clip & Use

**COUPON  
 Heavy Duty  
 SHOCKS**

Made by Monroe

**\$14.95 each installed  
 FRONT OR REAR • MOST U.S. CARS**

This offer good w/coupon thru 10-25-86

Clip & Use

**COUPON  
 FRONT DISC BRAKES**

- Free Inspection • Install New Pads
- Resurface Rotors • Road Test
- Repack Non-drive Bearing
- Inspect Hydraulic System
- Semi Metallic Pads Extra

**\$29.88 MOST CARS**

This offer good w/coupon thru 10-25-86  
 Clip & Use

PHOTOS BY AL BIZER



## BFGOODRICH T/A<sup>®</sup> RADIALS TAKE ON THE ROAD<sup>™</sup>

### COMP T/A<sup>®</sup>

The Ultimate High-Performance Tire

### EURO RADIAL T/A<sup>®</sup>

The Optimal Blend of Handling, Treadwear, Quality and Style

### RADIAL T/A<sup>®</sup>

The New Generation of the Original Race-Winning Street Radial



### CHOOSE THE RIGHT T/A<sup>®</sup> RADIAL

	HANDLING	WET & DRY TRACTION	TREADWEAR	RIDE	SPEED RATING	SIDEWALL
<b>COMP T/A</b> The Ultimate High-Performance Tire	EXCELLENT	VERY GOOD	GOOD	GOOD	<b>V</b> OVER 130 MPH	RBL*
<b>EURO RADIAL T/A</b> The Optimal Blend of Handling, Treadwear, Quality and Style	VERY GOOD	EXCELLENT	VERY GOOD	VERY GOOD	<b>H</b> UP TO 130 MPH	RWL RBL*
<b>RADIAL T/A</b> The New Generation of the Original Race-Winning Street Radial	VERY GOOD	EXCELLENT	EXCELLENT	EXCELLENT	<b>S</b> UP TO 112 MPH	RWL RBL*

GOOD VERY GOOD EXCELLENT

\*RWL: Raised White Letters  
\*RBL: Raised Black Letters

BFGoodrich

## Crankshaft Craftsmen Inc.



CRANKSHAFT GRINDING  
CAMSHAFT GRINDING  
CRANKSHAFT WELDING  
POLISHING STRAIGHTENING  
HIGH PERFORMANCE WORK  
BEARINGS AVAILABLE

QUALITY BEFORE QUANTITY

RUSS TAYLOR - PRESIDENT

**(366-0140)**

2957 JEROME • EAST OF I-75 • DETROIT

# THINK WINK

## CARS & TRUCKS



Satisfying Car Buyers For Over 42 Years

**BILL WINK CHEVROLET**  
10700 FORD RD., BET. WYOMING & SCHAEFER  
DEARBORN, MICHIGAN



**582-5400**

"KEEP THAT GREAT GM FEELING WITH GENUINE GM PARTS"



## AUTOMETRIC BODY SHOPS

American .. Import



818 N. Main  
Royal Oak, MI  
398-0200

490 S. Telegraph  
Pontiac, MI 48053  
332-0600

8645 E. 10 Mile  
Centerline, MI  
757-7491

24465 Gratiot  
East Detroit, MI  
774-3455



689-4940

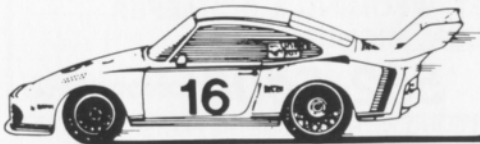
COMPLETE REPAIR SERVICE

PIRELLI & MICHELIN TIRES

OFFICIAL AET TEST  
AET TEST FREE WITH  
NORMAL MAINTENANCE  
SERVICE

- MERCEDES BENZ
- PORSCHE
- VOLKSWAGEN
- AUDI
- B-M-W

1725 E. MAPLE RD (15 MILE) TROY  
1 BLOCK EAST OF I-75



## FOREIGN AUTOMOTIVE SUPPLY, LTD.



Known for our **LOW, LOW PRICES**  
OEM QUALITY PARTS • LARGE INVENTORY • REPAIR MANUALS  
HIGH PERFORMANCE LIGHTS • BOSCH • UPS DAILY

Hours to serve you:  
Weekdays: 8:30-7:30  
Saturdays: 9:00-5:00  
SUNDAYS: 11:00-3:00

380 West 11 Mile  
Madison Heights

11 Mile

I-696

John R.

QUESTIONS? **542-6150**



Quartz Euro Code  
Lighting by  
MARCHALL,  
HELLA

Exhaust Systems  
by ANSA

Suspension by  
KYB,  
SUSPENSION  
TECHNIQUES,  
ADDCO

Racing Equipment  
by BELL,  
YANKEE

Rollbars, Air Dams,  
Sports Car Apparel



**Accessory House inc.**

313-548-4488

23257 Woodward

Ferndale mi. 48220

VAST SELECTION OF  
IMPORT AUTO ADORNMENTS  
WORLD'S FINEST MANUFACTURERS  
FOR THE DISCRIMINATING DRIVER

# Miller



**MADE  
THE AMERICAN WAY**



**OFFICIAL BEER SPONSOR**

**WATERFORD HILLS ROAD RACING**

**POWERS DISTRIBUTING CO., INC.**

2000 PONTIAC DRIVE  
PONTIAC, MICHIGAN 48053

**682-2010**

LOOKING back  
with Bizer

*May 1967*





## Beck's-ULTRA HIGH PERFORMANCE

7000 SCHAEFER ■ DEARBORN ■ MICH. 48126  
(313) 846-2600  
(800) 482-9381 (Mich. toll free)

### TIRES

**GOODYEAR**

**BF Goodrich**

**YOKOHAMA**

**PIRELLI**

**BF Goodrich**  
RACE TIRE PROGRAM

### SHOCKS



10% DISCOUNT TO TACA MEMBERS  
MAJOR CREDIT CARDS ACCEPTED

### WHEELS

**BBS**

**GOTTA**

**wed's**  
TURBO WHEELS

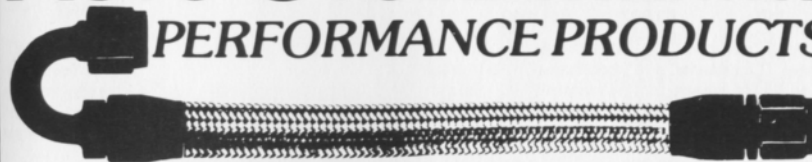
**ENKEI**

**centra CENTRA**

**Epsilon**  
ROAD WHEELS



## AUTO-CYCLE-MARINE PERFORMANCE PRODUCTS



"THE LARGEST INVENTORY IN THE MIDWEST"  
HOSE ★ FITTINGS ★ ADAPTERS

**Aeroquip**  
high performance hose and fittings

(313) 280-1171

4940 Delemere, Royal Oak, MI 48073

Peter Betrus, Jr.

Catalog \$2

**EARL'S**  
PERFORMANCE PRODUCTS

Thomas J. Betrus

# Hoosier<sup>®</sup> RACING TIRES

JAMALC RACING

(517) 223-8704

John  
Morris

Al  
Ciaramitaro

## Average Lap Speed

Min/Sec	MPH	Min/Sec	MPH	Min/Sec	MPH
1:00	85.326	1:15	68.261	1:30	56.884
1:01	83.927	1:16	67.363	1:31	56.259
1:02	82.574	1:17	66.488	1:32	55.647
1:03	81.263	1:18	65.635	1:33	55.041
1:04	79.993	1:19	64.805	1:34	54.463
1:05	78.762	1:20	63.995	1:35	53.890
1:06	77.569	1:21	63.204	1:36	53.329
1:07	76.411	1:22	62.434	1:37	52.779
1:08	75.288	1:23	61.681	1:38	52.240
1:09	74.197	1:24	60.947	1:39	51.713
1:10	73.137	1:25	60.230	1:40	51.196
1:11	72.106	1:26	59.530	1:41	50.689
1:12	71.105	1:27	58.846	1:42	50.192
1:13	70.131	1:28	58.176	1:43	49.704
1:14	69.183	1:29	57.523	1:44	49.227

The Waterford Hills Road Course is 1.4221 miles long (7,509 ft. center line of track). To determine the speed of any individual car, time it for one complete lap and read off the speed from this table.

## Class Records

ASR	Ed Murray	Chevron	1:10.9	9/81
CSR	Evan MacDonald	M-2	1:10.5	9/78
DSR	Ed Murray	Jeddi	1:12.8	9/85
S/2	Larry Campbell	Lola	1:11.5	9/79
SREN	Dave Finch	SPT Renault	1:21.3	6/84
EP	Lou Livengood	Porsche 356	1:16.3	6/80
FP	Barry Hartzel	MG Midget	1:16.2	7/78
GP	Kirk Carlson	MG Midget	1:17.0	8/81
HP	Paul Cameron	Sprite	1:20.4	7/78
GT1	Don Sak	Corvette	1:13.2	5/86
GT2				
GT3	Craig Allen	Lotus Elan	1:16.4	9/83
GT4	Jerry Morlewski	Fiat 124	1:18.7	9/85
GT5	Ted Wollesen	Mini Cooper	1:19.2	9/85
ITA	Dean Voltmer	Mustang II	1:30.9	5/86
ITB	Ray Krom	Scirocco	1:28.8	9/85
ITC	Dave Vestrand	Fiesta	1:32.6	8/85
ITS	John Heeney	Datsun 280Z	1:26.2	5/86
SSGT	D.J. Fazckas	Porsche Turbo	1:22.7	5/86
SSA	Bill Bayley	Mustang	1:26.2	6/85
SSB	Ron Miller	Honda CRX SI	1:27.0	5/86
SSC	Ray Krom	VW-GTI	1:28.8	5/86
**FA	Andy Falbo	March	1:06.1	8/83
FC	Jay Novak	Novakar	1:09.3	9/84
FF	Vince Muzzin	Royale	1:09.4	6/78
FFR	Mark Davidson	Crossle 32	1:17.0	5/84
F4	Stuart Lamont	Xpit	1:12.5	7/83
FV	Lee McLeod	Lynx	1:15.7	7/81
F440	Jay Novak	Epee	1:14.8	9/85

\*\*track record

## Racing Classes

To insure fairness in competition, all road racing cars are grouped into racing classes by the Sports Car Club of America in its General Competition Rulebook (GCR). Waterford Hills Road Racing observes the GCR regulations with some minor exceptions.

The five Competition groups are: Production (sport cars), Showroom Stock (GT cars and sports cars with minimal modification), Sports Racing (Highly modified engine and body over wheels), GT (enclosed cockpit passenger cars and former big production cars), and Formula (open wheels single cockpit). Racing groups are subdivided into classes of equally competitive cars based upon engine size and handling characteristics.

The cars listed below are representative of their racing classes and include most of those you will see at Waterford Hills.

### PRODUCTION

EP	Porsche 356 series, MGB, Opel GT, Porsche 914/4, Triumph TR-4
FP	Saab Sonnet, MG Midget Mk III & IV, Lotus 7, Triumph Spitfire Mk III & IV & 1500
GP	MG Midget Mk I & II, Triumph Spitfire Mk I & II, MGA, Austin Healy Sprite, Fiat X1/9, Fiat 124 Spider, Alfa Romeo, Porsche Coupe
HP	Austin Healy Sprite Mk I & II, Fiat 850, MG Midget 948, Fiat Abarth

### SHOWROOM STOCK

SS-GT	New class with current model cars of SSA plus additional modifications allowed
SSA	Mustang Cobra, Mazda RX series, Porsche 924, Capri V-6, Datsun 280Z
SSB	Triumph TR-8, Scirocco, Dodge Colt, Datsun 200SX, Fiat 124
SSC	Fiat X1/9, Pinto, VW Rabbit, Renault LeCar, Mustang 2.3, MGB, Honda Civic, Toyota Corolla, Pontiac Astre

### SPORTS RACING

ASR	over 1300 cc but less than 6000 cc
CSR	over 850 cc up to 1600 cc (with restrictions)
DSR	below or equal to 850 cc
S/2000	uses Ford 2000 cc overhead cam engines only

### GT CLASSES

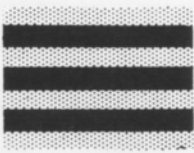
GT-1	Corvette, Camaro, Ford Cobra II, Shelby GT-350, Porsche 911 SC, Dodge Aspen
GT-2	Datsun Z series, Mazda RX7, Porsche 914/6 & 924 Turbo, Sunbeam Tiger, Triumph TR-6 & TR-8
GT-3	Opel 1900, Datsun 510 1800, Mustang 2300, Pinto 2000 & 2300, Cosworth Vega
GT-4	Fiat 124 Sports Coupe, Pinto 1600, Toyota Celica, Dodge Colt, Toyota Corolla 1600, Renault LeCar, Datsun 510 1600, Ford Escort/Lynx, VW Rabbit & Scirocco
GT-5	Datsun 200SX, Austin/Morris Mini Cooper, VW 1300, NSU TT, Honda Civic, Fiat 124 1200, Toyota Corolla 1200

### FORMULA

FF	Formula Ford — Cortina or Pinto 1600 cc engine, strict weight to engine ratio with driver's weight included in total legal weight, very equal class
FFR	Formula Ford Radial — the cars are the same as the above class except they must use BF goodrich T/A radial tires
FV	Formula Vee — all Volkswagen components, 1200 cc engine, driver's weight included in total legal weight, very competitive class
F/ATLC	Formula Atlantic — choice of engines in over 1100 cc up to 16000 cc range, wings and other modifications allowed, not meant to be an inexpensive race car
F/CNTL	Formula Continental — engine up to 1100 cc, rear wings allowed, combines the modifications of the previous Formula C and Formula Super Vee classes
F440	Formula 440 — utilizes Fuji two-cycle snowmobile engines and drive train, rigid suspension, wings permitted
F4	Formula Four — Canadian class, motorcycle engine power plant, engine size determines weight and transmission allowed

## Flags

**yellow with red stripes**



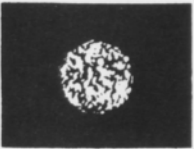
Take care, oil has been spilled or a slippery condition exists somewhere in your vicinity. Look at the track surface.

**black**



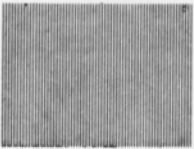
Sloppy or dangerous driving. Complete the lap you are on, stop at the Start/Finish line for consultation with Chief Steward. Waving Black Flag (displayed on all corner stations) means the race is stopped. Slow down immediately and proceed around the track with extreme caution to the pit lane for a re-start.

**black with orange ball**



(Meatball Black Flag) There is something mechanically wrong with your car. Proceed to your pits at reduced speed.

**green**



(Or no flag) Course is clear.

**yellow**



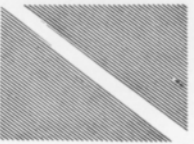
(Stationary) Take care, danger, no passing. (Waving) Great danger, be prepared to stop, no passing.

**red**



Waving red (displayed by the Starter only) means the race is stopped, slow down immediately and proceed around the track with extreme caution to the pit lane.

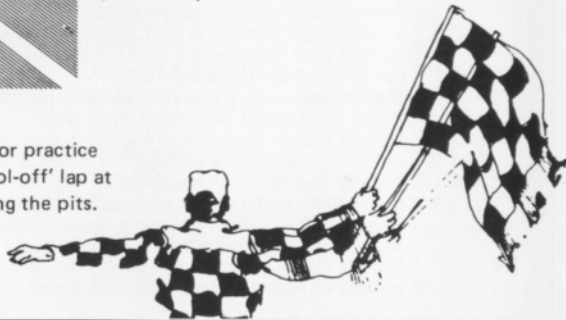
**blue with diagonal yellow stripes**



(Motionless) Another competitor is following you closely.

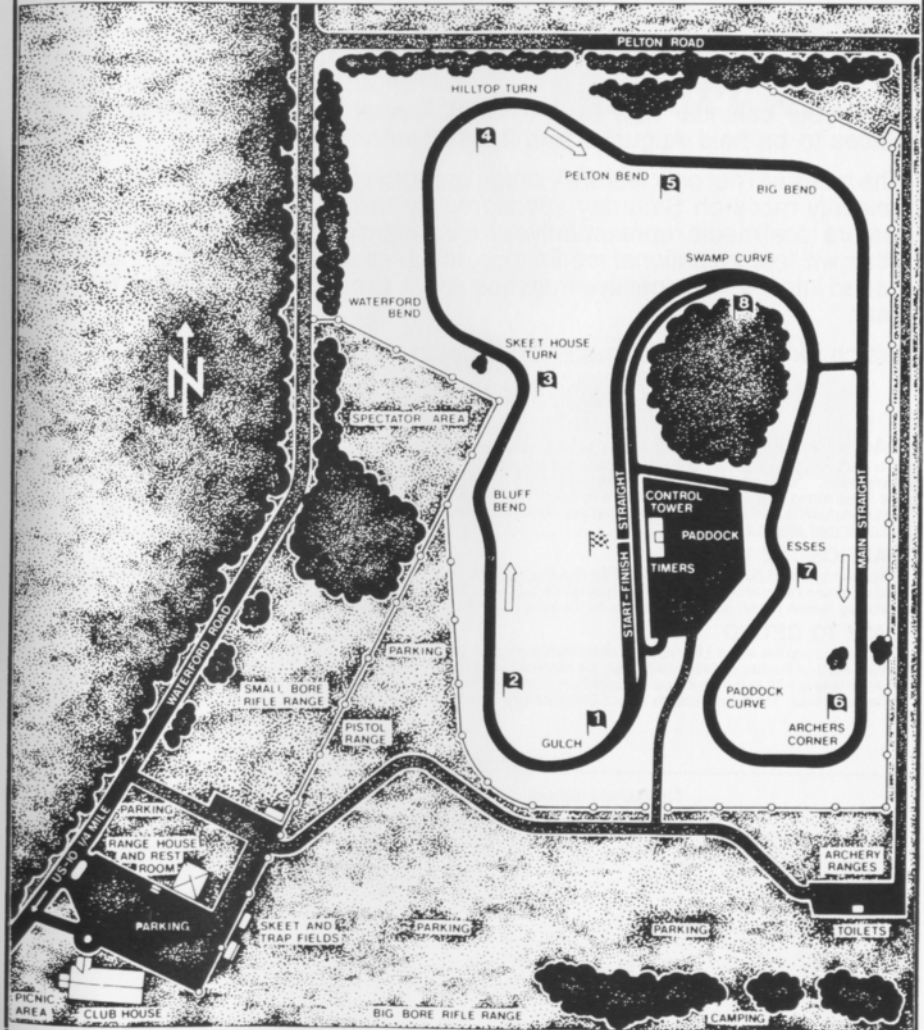
**checkered**

You have finished the race (or practice session). Complete one "cool-off" lap at reduced speed before entering the pits.



## Waterford Hills Course Map

a 1.5 mile asphalt road course at waterford, michigan



## Waterford Hills 1987 Road Racing Calendar Schedule

Race 1	May 16-17	Race 4	July 25-26
Race 2	May 30-31	Race 5	Aug. 29-30
Race 3	June 27-28	Race 6	Sept. 26-27

Mark your calendar now for the Third Annual Meadowbrook Historic Races to be held August 1 and 2 at Waterford Hills.

The races will not only feature vintage automobiles, there will also be two celebrity races on Saturday sponsored by Volkswagen. One race will feature local media representatives racing identically equipped VWs, the other will feature national media reps. in the same cars. Last year these turned into very competitive matches and it appears they will again this year.

Watch for more details in coming Digests and plan to be there.

### Vintage Race Aug. 1-2

#### RACING RAIN OR SHINE

The hills of Waterford are being invaded . . . with an army of sports cars, sedans and formula cars in fierce, wheel to wheel competition . . . and for 1987 we've assembled the largest field in our 29 year history! Watch over 130 top drivers battle it out in the finest racing machinery from America and Europe. Corvette, Porsche, Datsun. Everything from Capris to Camaros, McLarens to MG's. All together, fighting it out on a mile-and-a-half track with 13 right and left turns that twist up and down hills like no other road course in the U.S.A.

#### EASY ON THE WALLET

Admission is just \$3.00 for Saturday, \$5.00 for Sunday, or \$6.00 for the entire weekend. Children under 12 are always free and a Season Ticket is only \$20.00. The track opens at 10 a.m. for practice and qualifying. Racing begins at 1:30 p.m. on Saturday (seven races) and at 11:30 a.m. on Sunday (ten races). For more information phone (313) 623-0444.

#### EASY TO GET TO

Chances are you live within a few minutes of the Midwest's premier road course. The W.H.R.R.I. Race Track is located just 6 miles north of Pontiac on Waterford Road, 1/4 mile each of Dixie Highway (U.S. 10) in Waterford, Michigan. The easiest route to take is I-75 to the southbound Sashabaw Exit. Take Sashabaw south to Pelton Road, then take Pelton west to Waterford Road. The total distance after exiting the expressway is 2-1/2 miles.

New, Used reproduction Parts and Accessories  
Custom Paint and Body Repair

# BOJAX

## HiTech Automotive

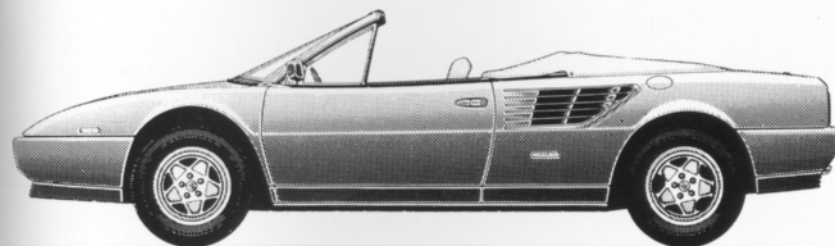
design and fabrication

DOUG FEHAN  
BOB FEHAN  
313/549-5410

4712 Fernlee  
1st Block East of Coolidge, S. of 14  
Royal Oak, Michigan 48073

## Now...3.2 Mondial Cabriolet

A Ferrari is an investment: in pride, in excellence, in achievement. Protect your investment by purchasing and maintaining your Ferrari through your authorized dealer. Only your authorized Ferrari dealer can provide full factory warranty, service and parts.



*The Sports Car Exchange*

MICHIGAN'S EXCLUSIVE AUTHORIZED AGENT FOR  
FERRARI

14510 MICHIGAN AVE. DEARBORN, MICHIGAN 313-581-6222