

## CLASS CHAMPIONSHIPS

Drivers compete throughout the season for the honor of being the best in their racing class. The best driver wins the honor of keeping the big rotating trophy for the next race season and receives a commemorative "keeper" trophy as well. The big trophies have been donated over the years as their names will indicate. We give you the class, trophy name and the 1981 winner.

GT-1	Detroit News Trophy	Doug Buist
GT-2	Rich Bell Trophy	Ken Nelson
GT-3	Falvey Motors Trophy	Jerry Morlewski
GT-4	Tom Milton Memorial Trophy	Ross Becker
SSA	Ford Motorsport Trophy	Charlie Henry
SSC	Ford Motorsport Trophy	Mike White
C/DP	Downriver Sports Car Trophy	Ron McConkey
EP	Tom Sullivan Trophy	Paul Nawrocki
FP	Bob Owens Trophy	Randy Black
GP	Import West Trophy	Hugo Carlson
HP	Don Cameron Trophy	Dena Hallandal
all SR	Ed Lawrence Memorial Trophy	Ed Murry
FF	Belle Tire Trophy	Jon Craig Horgas
FV	Mazuro Motors Trophy	Lee McLeod

The Sportsman of the Year – Trophy donated jointly by Downriver Sports Car and Import West Collision – is awarded to the driver who best exemplifies the best in sportsmanship, or grace under competitive pressure, if you will. It is a trophy voted upon by the drivers themselves. Last year's winner was the number two class finisher in those hotly contested Formula Vee races – Dennis Hamilton!

HONEY RADIO  
WHND  
AM56 ALL OLDIES

# WATERFORD HILLS



## ROAD RACING • 1982



september \$1.00

fall classics



TOYOTA TOYOTA TOYOTA TOYOTA TOYOTA TOYOTA TOYOTA TOYOTA TOYOTA  
OTA TOYOTA TOYOTA TOYOTA TOYOTA TOYOTA TOYOTA TOYOTA TOYOTA TOYOTA TOYOTA TOYOTA TOYOTA TOYOTA TOYOTA TOYOTA TOYOTA TOYOTA TOYOTA  
TA TOYOTA TOYOTA TOYOTA TOYOTA TOYOTA TOYOTA TOYOTA TOYOTA TOYOTA TOYOTA TOYOTA TOYOTA TOYOTA TOYOTA TOYOTA TOYOTA TOYOTA TOYOTA TOYOTA

PACE CAR FURNISHED BY

# PAGE TOYOTA



8 1/2 & TELEGRAPH  
SOUTHFIELD, MICH.

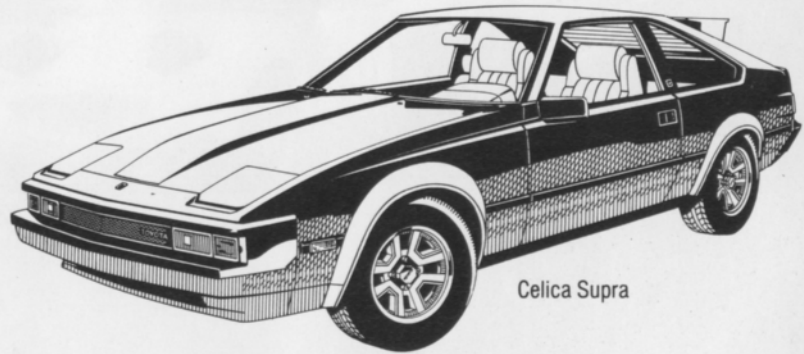
352-8580

MICHIGAN'S #1 TOYOTA DEALER  
IN SALES, SERVICE AND BODY REPAIR



WINNER OF THE NATIONAL SERVICE AND  
CUSTOMER RELATIONS AWARD 4 YEARS RUNNING

FINE SELECTION OF USED IMPORT  
& DOMESTIC ECONOMY CARS



Celica Supra

**THE PRIX-RACE FAVORITE —  
THE TOYOTA CELICA SUPRA.**

# WATERFORD



photo by john willyard

© Published by Waterford Hills Road Racing, Inc.

## contents

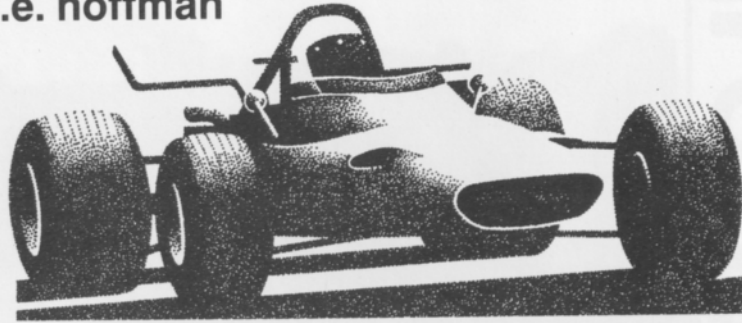
- 2. the inside line
- 3. officials
- 9. race results
- 14. winners circle
- 23. looking back with bizer
- 25. average lap speed chart
- 25. class records
- 26. racing classes
- 27. flags
- 28. course map
- 30. racing schedule

## staff

- publisher s.e. hoffman
- feature editor peter quenet
- advertising director jerry morlewski
- art director dan hill
- production staff brenda riley
- photographers al bizer  
john gacloch  
john j. willyard  
joe costa
- cover photo al bizer

## the inside line

s.e. hoffman



Welcome to Fall Classics!

This weekend's sprint races are the last of the 1982 season and hold promise of lots of excitement! There is a certain "go-for-it" attitude as drivers take aim on that elusive class or track record, or just try to beat the guy whose tail lights he's been following all year! The competition for some of the class championship trophies will be decided this weekend, right down to Sunday's last checkered flag! The driver's are still vying for position in the 1982 Top Ten Driver's Club, with the Number One driver receiving the championship ring at the Awards Dinner in November. As you can see, there is a lot riding on "the inside line", if you will pardon the pun!

August races saw lots of good racing with three different winners in the GT-4 class: Ed Ploughman, Datsun, Ted Wolleson, Mini, and Ed Rowley, NSU. The Bowman brothers, Jim and Kerry, finished 4th and 5th in the Sunday FV feature with Dad, Bill, in 7th. The best family finish for the famous Bowman "tag team" Formula Vee racing group! Tim Taylor in the red and white Corvette (number 21) set a new GT-1 class record of 1:14.9 as he took a half second off the previous record. Congratulations, Tim!

As we conclude our 1982 season, we would like to thank all of our drivers, their crews and families for a most successful racing year! The competition is always good, the sportsmanship the best, the wheel-to-wheel racing the cleanest anywhere! In its almost 25 years of racing, Waterford Hills has always demonstrated the best in club racing — and that's really what we are all about. Thank you drivers — you're the greatest!

We would like to thank our hard-working volunteer race staff for a terrific season. It takes about 150 workers to get a race weekend going and running smoothly, everyone from the results typist to the turn marshals. Thanks group, you are the greatest!

Most of all, we would like to thank our loyal race fans. Your presence, cheers and applause on the victory laps really mean so much to the drivers. They know the thrill of your appreciation for their hard driving efforts. Plan to come next season (last full weekend from May-September and the mid-May weekend) for more racing excitement. Thank you, fans — you are the greatest!

This Sunday has some very special events, starting with the WHND (honey radio) DJ Challenge. Driving the Bob Owens Nissan-Datsun challenge Datsun will be Richard Hayes, Hank O'Neil, Fred "Boogie" Bryan and Bob Owens. On hand will be the WHND Classic Car Club, so, welcome all you WHND fans!

Another special treat will be the Hudson-Essex Sports Car Club with a corral behind the bleacher seats.

Appropriately, with the two classic car clubs, this weekend welcomes the return of the vintage racing cars who make a total of twenty races this weekend. Happy viewing!!

## officials

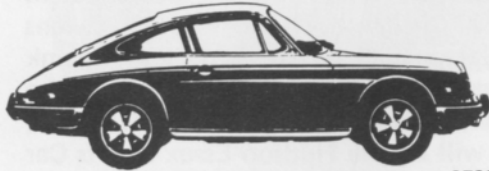
oakland county sportsmen's club president	art miracle
waterford hills road racing club president	jim mcintosh
chief steward	john morris
assistants	ed atkinson
	barb kitch
stewards committee	dan macdonald
	don clining
	tim evans
	bill hallandal
	peter quenet
	mike white
director of racing	dena hallandal
race cordinators	sue bogart
	dennis whitehead
chiefs of timing and scoring	anne roeske
	chris syfert
chief of flags and communications	sue hoffman
chief of communications	chris maurer
chief starter	hal goff
assistants	mike morrow
	iain ferguson
chief tech inspector	tony kunert
chief paddock marshal	bruce penbarthy
chief grid marshal	nancy waggoner
chief course marshal	dave sanders
chief of emergency services	mark nelson
chief registrar	jan evans
licensing chairman	jerry shiloff
membership chairman	judy davis
trophy chairman	lynda gale
la boutique	pat prato



689-4940

COMPLETE REPAIR SERVICE

PIRELLI, MICHELIN & KLEBER TIRES



- MERCEDES BENZ
- PORSCHE
- VOLKSWAGEN
- AUDI
- B-M-W

1725 E MAPLE RD (15 MILE) TROY  
1 BLOCK EAST OF I-75



# WHY EXCHANGE REAL MONEY FOR A COUNTERFEIT BMW?

There are an increasing number of automobile showrooms in America displaying cars which resemble, compare themselves to, or even claim to perform "like" the BMW 320i.

These claims are made with considerably more ambition than the cars themselves.

Because the 320i performs so exceptionally, and holds its value so well, that one critic called it "the quintessential sports sedan"—a designation that pre-

cludes the possibility of successful imitation.

If you're intrigued by the thought of owning an original instead of a reproduction, contact us to arrange a thorough test drive at your convenience.



**THE ULTIMATE DRIVING MACHINE.**  
BMW, MUNICH, GERMANY.



© 1982 BMW of North America, Inc. The BMW trademark and logo are registered trademarks of Bayerische Motoren Werke, A.G.

ERHARD MOTOR SALES INC.

24130 Telegraph Rd. at 9½ Mile • Southfield • 352-6031

SPORT & SPECIALITY RESTORATION  
color matching · collision repairs

FERRARI · ALFA ROMEO · MERCEDES · BMW · LOTUS · MG



ray's customs inc 682-3123  
w. bloomfield



# TIRE TRUEING

Goodyear  
Eagle NCT-GT  
We Beat Any Deal

B.F. Goodrich  
Radial T/A's  
Michelin TRX

8-8 Daily

8-5 Sat.

13 Mile & John R  
Madison Heights  
585-6353

6477 Highland Rd.  
Pontiac, Mich.  
666-2444

14 Mile-3 Blks. E. of Coolidge  
Royal Oak  
280-0202



## REDFORD SPEED EQUIPMENT

Of Special Interest

SIDEMOUNT HEADERS  
ROLL BARS  
KONI SHOCKS  
SWAY BARS  
DRIVING LIGHTS  
COMP. SEAT BELTS  
AND HARNESSES



RACING TIRES AND WHEELS

STEWART-WARNER INSTRUMENTS & FUEL PUMPS

Other Necessities

GENERAL KINETICS  
RACING CAMS  
LAKEWOOD  
HOLLEY CARBS  
TRANS AM OIL PANS  
RACING OIL  
HOOKER HEADERS  
HURST  
MALLORY & ACCEL  
IGNITION SYSTEMS

GENUINE  
**G.M.**  
U.S. PARTS

532-2050 or 532-6223

26486 GRAND RIVER 10-8 Mon-Fri 10-6 Sat



# CIBIE MARCHAL PARIS-RHONE

FOR

PORSCHE  
SAAB  
RENAULT  
PEUGEOT

(313) 294-1700

Manufacturers of Quality Automotive  
Performance Lighting Products  
And Electrical Components

St. Clair Shores, Mi. 48082

New, Used reproduction Parts and Accessories  
Custom Paint and Body Repair

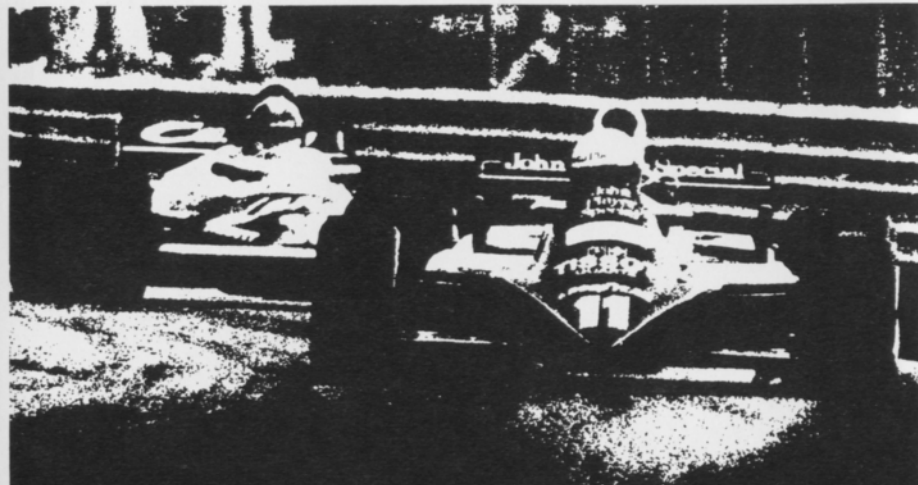
## BOJAX

## HI-TEK AUTOMOTIVE

design and fabrication

DOUG FEHAN  
BOB FEHAN  
BOBBY FEHAN  
313/549-5410

4712 Fernlee  
1st Block East of Coolidge, S. of 14  
Royal Oak, Michigan 48073



# FALVEY PERFORMANCE...

Falvey of Troy has been performing for automotive enthusiasts since 1948. This performance shows in the select line of cars Falvey offers: JAGUAR, SAAB, TOYOTA, VOLKSWAGEN. It shows in the knowledge and love of cars you'll find among the people who work at Falvey. (You may very well meet some of them here, appreciating today's performance.) And it especially shows among the bays and benches of the Falvey service department. Where some of the finest automobiles in Michigan are cared for. If you are a performance buff, be sure to visit Falvey the next time you're near the Troy Motor Mall. You'll find that you're among friends.



Troy Motor Mall  
(313) 643-6900

Jaguar, Saab, Toyota, Volkswagen...and service.



*The Sports Car Exchange*

FERRARI MASERATI ALFA ROMEO  
AUTHORIZED SALES SERVICE PARTS

14510 MICHIGAN AVENUE, DEARBORN 581-6222



photo by john williard

## August 28/29 Race Winners

### class races

	saturday	sunday
Race 1	FV john nolan	john nolan
Race 2	GP tim claucherty	tim claucherty
	HP conrad miesiak	conrad miesiak
	GT-4 ed ploughman	ted wolleson
	C/DSR (no finisher)	don parish
Race 3	FF jerry bell	jerry bell
Race 4	EP steve scannell	steve scannell
	FP tony brakora	tony brakora
	S2000 jim cooke	jim cooke
	ASR (no finisher)	dino cresentini
Race 5	GT-2 ken nelson	ken nelson
	GT-3 jerry morlewski	mark woodbury
	SSA bill bayley	bill bayley
	SSB peggy krom	peggy krom
	SSC ron lindensmith	ron lindensmith
Race 6	GT-1 don sak	don sak
	CP wayne rogers	wayne rogers
	DP ron mconkey	george dohring

### feature races

	Race 1	Race 2	Race 3	Race 4
1st	john nolan	hugo carlson	mark davison	jim cooke
2nd	dennis hamilton	bob ohneck	john frazer	tim taylor
3rd	dan wyse	michael alexander	jason byers	paul nawrocki
4th	jim bowman	ed rowley	kevin ede	grady ellis
5th	kerry bowman	bill bayley	agostino fabbri	claudie beauregard



photo by john willyard

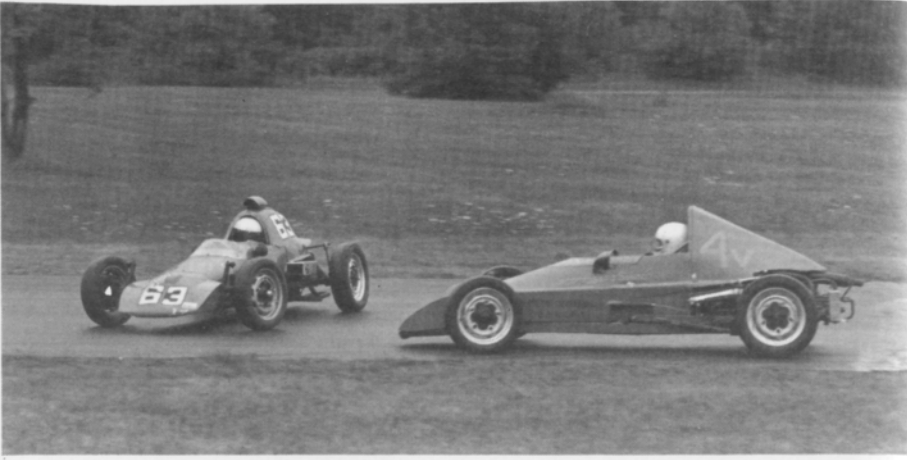


photo by al bizer



photo by al bizer

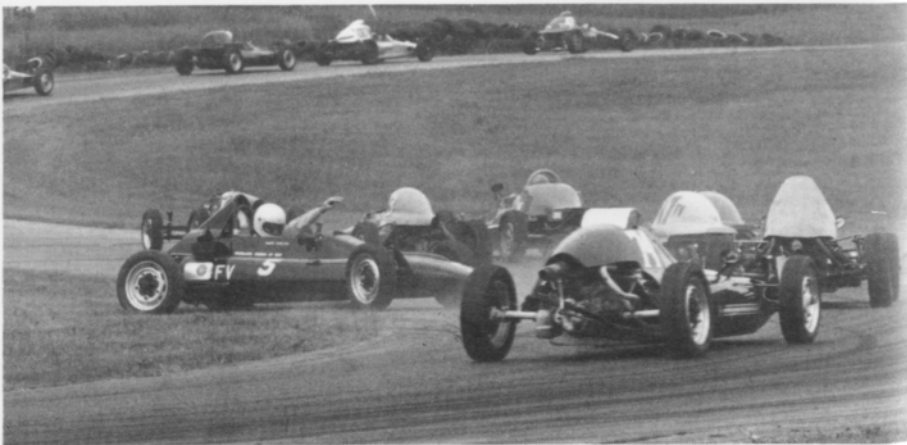


photo by al bizer



photo by al bizer



photo by al bizer

photo by john williard



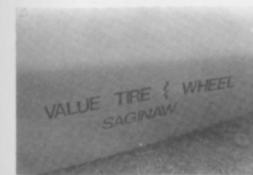
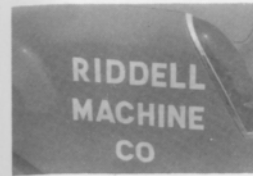
photo by al bizer



photo by john williard



# the sponsors





# winners circle



TED WOLLESON  
GT-4



DON SAK  
GT-1



TERRY ABBOT  
SSA



RANDY BLACK  
FP

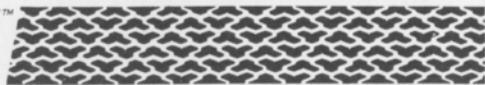


JOHN NOLAN  
FV



ED ROWLEY  
GT-4

**T/A** HIGH TECH  
RADIALS



**BFGoodrich**

*The Radial Born  
of High Technology  
Designed For The Driver  
That Demands The Most From His Tires.*



**T/A 70**



**T/A 60**



**T/A 50**

*The Street Radial  
Designed To Win At The Track.*



**All-Terrain T/A™**



**Sport Truck T/A™**

*The first radial light truck tire  
specifically engineered for on or off-road use.*



**Mud-Terrain T/A™**

**BFGOODRICH**  
2330 S. Dort Hwy.  
Flint, Mi 48507  
232-0168

**BFGOODRICH**  
28501 Dequindre  
Madison Hgts., MI 48071  
543-4260

**BFGOODRICH**  
15150 Michigan Ave.  
Dearborn, MI 48126  
581-6900

We accept M/C, Visa, Diners, American Express Carte Blanche



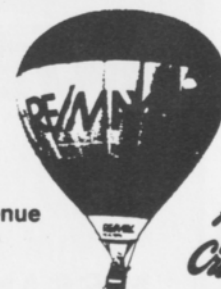
photo by al bizer

**RE/MAX**

**CENTRAL**



2610 north woodward avenue  
royal oak, michigan 48073  
phone: (313) 549-4404



*Above  
the  
Crowd!*

RE/MAX STANDS FOR REAL ESTATE MAXIMUMS. THIS  
MEANS MAXIMUM SERVICE AND MAXIMUM ASSISTANCE.  
FOR INFORMATION ON VACATION TIME SHARING OR  
FOR A COMPLIMENTARY MARKET ANALYSIS OF YOUR  
PRESENT HOME, CALL:

Pete Wickenden  
Res. 542-4365  
Off. 549-4404

Phil Blagdurn  
Res. 548-2941  
Off. 549-4404



# Crankshaft Craftsman Inc.



CRANKSHAFT GRINDING  
CAMSHAFT GRINDING  
CRANKSHAFT WELDING  
POLISHING-STRAIGHTENING  
HIGH PERFORMANCE WORK  
BEARINGS AVAILABLE

QUALITY BEFORE QUANTITY

RUSS TAYLOR - PRESIDENT

**(366-0140)**

2819 JEROME EAST OF I-75 • DETROIT

# BOB OWENS



NISSAN

DATSUN

**5436 JACKSON RD.  
ANN ARBOR**

**995-9502**



**Accessory  
House inc.**

**313-548-4488**

**23257 Woodward**

**Ferndale mi. 48220**

Quartz Lighting

ANSA  
HELLA

Suspension

KONI  
KYB

Exhaust Systems

CIBIE

Seating

RECARO

Sports Car Apparel

Stewart Warner Instruments

Racing Equipment

BELL  
YANKEE

Rollbars

Air Dams

Vast Selection

Import Auto Adornments

World's Finest Manufacturers

For The Discriminating Driver



photo by al bizer

(313) 542-6150

**FOREIGN AUTOMOTIVE SUPPLY, LTD.**  
PARTS FOR ALL IMPORTS

HOURS: MON.-FRI. 8:30-7:00  
SAT. 9-5

380 W. 11 MILE RD.  
(5 BLKS. EAST OF THE I-75)  
MADISON HEIGHTS, MI 48071

Foreign  
Car  
Specialists



## AUTOMETRIC BODY SHOPS

Expert Collision & Paint Service  
American .. Import

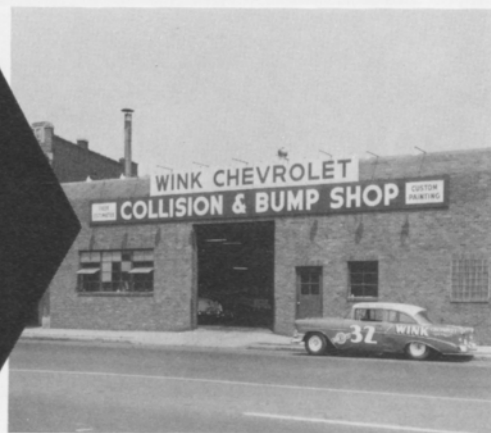
818 N. Main  
Royal Oak, MI  
398-0200

8645 E. 10 Mile  
Centerline, MI  
757-7491

24465 Gratiot  
East Detroit, MI  
774-3455

# THINK WINK

## CARS & TRUCKS



*Satisfying Car Buyers For Over 42 Years*

**BILL WINK CHEVROLET**  
10700 FORD RD., BET. WYOMING & SCHAEFER  
DEARBORN, MICHIGAN



### 582-5400

"KEEP THAT GREAT GM FEELING WITH GENUINE GM PARTS"



## TRANSMISSION *and* GEAR

- AUTOMATIC
  - STANDARD
  - CLUTCHES
  - REAR ENDS
- ROAD TESTING  
ESTIMATES

2785 12 MILE RD.  
BERKLEY

MASTER CHARGE & BANKAMERICARD

### 543-7118

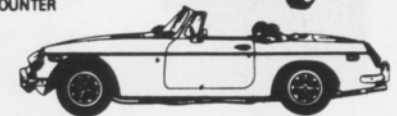
OR  
399-0177

## IMPORTED CAR SERVICE CO.

Call 293-5566

31529 UTICA RD., FRASER  
BET. 13 & 14 MILE

- LET OUR TRAINED PERSONNEL SERVICE YOUR CAR
- LOCAL REFERENCES
- PARTS COUNTER



## RAGLAND AUTO SUPPLY

SPECIALISTS IN ALL PHASES OF

### HIGH PERFORMANCE WORK

COMPLETE LINE OF BRAND NAME &  
CUSTOM PARTS & ACCESSORIES

### COMPLETE MACHINE SHOP

- ENGINE BLUEPRINTING • BALANCING (ALL WORK DONE IN OUR OWN SHOP)

SOUTHFIELD  
**355-2288**  
26700 W. 8 MILE RD.  
BET. INKSTER & TELEGRAPH



OPEN 6 DAYS A WEEK — CLOSED SUNDAY





# Al Bizer Day August 29, 1982



In appreciation for the many hours spent on the Waterford Digest and the thousands of pictures that fill our scrape books



## average lap speed chart

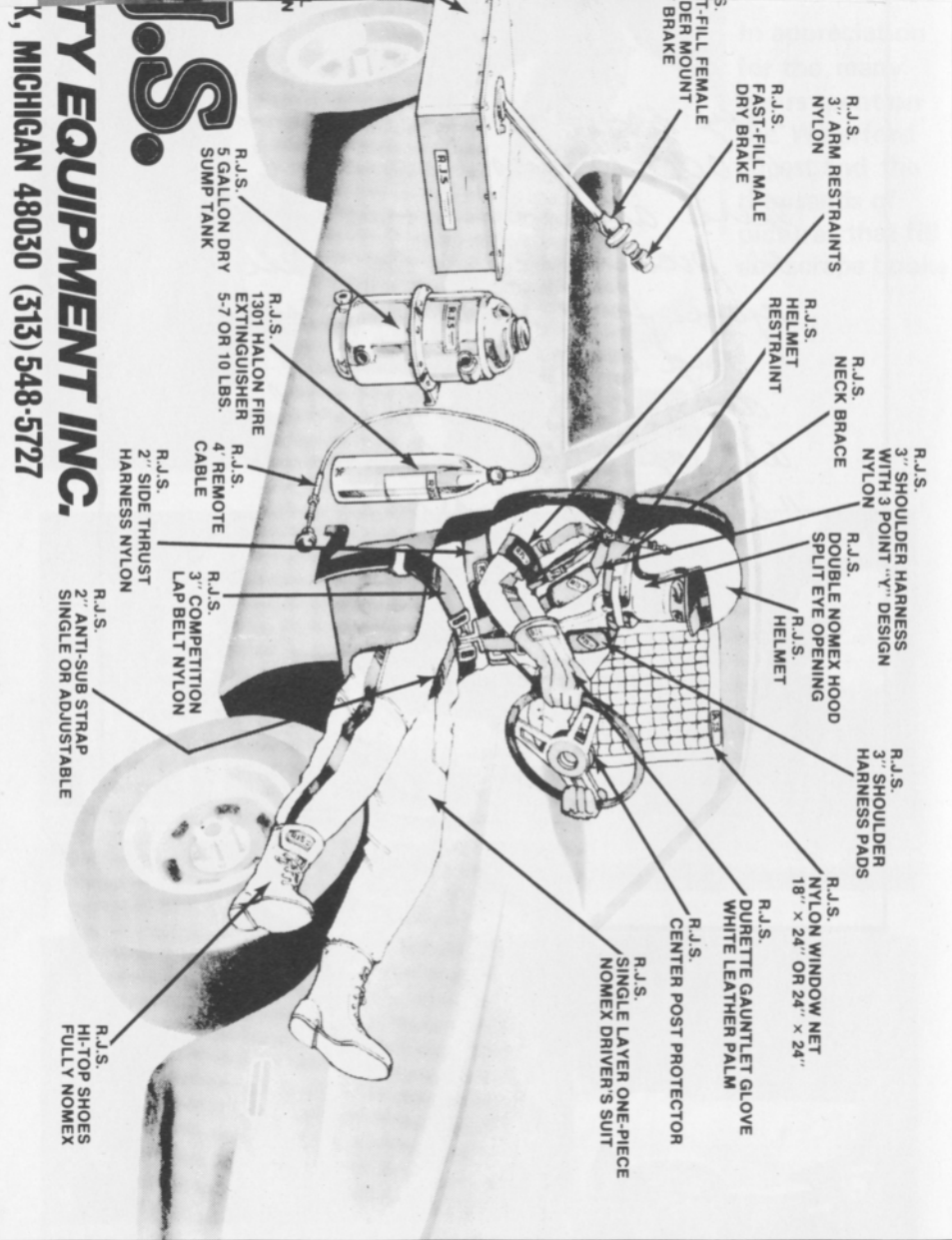
Min/Sec	MPH	Min/Sec	MPH	Min/Sec	MPH
1:00	85.326	1:17	66.488	1:34	54.463
1:01	83.927	1:18	65.635	1:35	53.890
1:02	82.574	1:19	64.805	1:36	53.329
1:03	81.263	1:20	63.995	1:37	52.779
1:04	79.993	1:21	63.204	1:38	52.240

*They say a picture is worth 10,000 words — well, there aren't enough words or pictures that can tell you just how surprised (and of course how delighted I was) when all of you sprung "AL BIZER DAY" on me. It was absolutely super! Many, many thanks to all of my good friends.*

*Al*



# Al Bizer Day August 29, 1982



**R.J.S. RACING EQUIPMENT INC.**  
 K, MICHIGAN 48030 (313) 548-5727

## average lap speed chart

Min/Sec	MPH	Min/Sec	MPH	Min/Sec	MPH
1:00	85.326	1:17	66.488	1:34	54.463
1:01	83.927	1:18	65.635	1:35	53.890
1:02	82.574	1:19	64.805	1:36	53.329
1:03	81.263	1:20	63.995	1:37	52.779
1:04	79.993	1:21	63.204	1:38	52.240
1:05	78.762	1:22	62.434	1:39	51.713
1:06	77.569	1:23	61.681	1:40	51.196
1:07	76.411	1:24	60.947	1:41	50.689
1:08	75.288	1:25	60.230	1:42	50.192
1:09	74.197	1:26	59.530	1:43	49.704
1:10	73.137	1:27	58.846	1:44	49.227
1:11	72.106	1:28	58.176	1:45	48.758
1:12	71.105	1:29	57.523	1:46	48.298
1:13	70.131	1:30	56.884	1:47	47.846
1:14	69.183	1:31	56.259	1:48	47.403
1:15	68.261	1:32	55.647	1:49	46.968
1:16	67.363	1:33	55.041		

The Waterford Hills Road Course is 1.4221 miles long (7,509 ft. center line of track). To determine the speed of any individual car, time it for one complete lap and read off the speed from this table.

## class records

ASR	Ed Murray	Chevron	1:10.9	9/81
CSR	Evan MacDonald	M - 2	1:10.5	9/78
DSR	Don Clining	Meister Honda	1:20.8	5/75
S/2000	Larry Campbell	Lola	1:11.5	9/79
CP	Wayne Rogers	Datsun 240Z	1:19.4	8/78
DP	Karl Nilsson	Porsche 914	1:17.5	9/79
EP	Lou Livengood	Porsche 356	1:16.3	6/80
FP	Barry Hartzel	MG Midget	1:16.2	7/78
GP	Kirk Carlson	MG Midget	1:17.0	8/81
HP	Paul Cameron	Sprite	1:20.4	7/78
GT-1	Tim Taylor	Corvette	1:14.9	8/82
GT-2	J. Byron Walker	Datsun 510	1:16.5	9/80
GT-3	Dave Huard	Toyota	1:18.9	7/80
GT-4	Ross Becker	Mini Cooper	1:19.0	5/82
SSA	Bobby Fehan	Mustang II	1:27.4	7/80
SSB	Thad Gutowski	Scirocco	1:29.6	9/76
SSC	Marc Robling	Pinto	1:30.1	9/80
FF	Vince Muzzin	Royale	1:09.4	6/78
FV	Lee McLeod	Lynx	1:15.7	7/81
* F/ALTC	Vince Muzzin	March	1:06.7	5/75
F/C	Charles Van Acker	Lola	1:09.8	8/79
F440	Greg Assenmacher	Stinger	1:19.0	7/80
F4	Robert Long	Xpit	1:13.2	9/79

\*\*track record



# racing classes

To insure fairness in competition, all road racing cars are grouped into racing classes by the Sports Car Club of America in its General Competition Rulebook (GCR). Waterford Hills Road Racing observes the GCR regulations with some minor exceptions.

The five competition groups are: Production (sports cars), Showroom Stock (GT cars and sports cars with minimal modification), Sports Racing (highly modified engine and body over wheels), GT (enclosed cockpit passenger cars and former big production cars), and Formula (open wheels and single cockpit). Race groups are subdivided into classes of equally competitive cars based upon engine size and handling characteristics.

The cars listed below are representative of their racing classes and include most of those you will see at Waterford Hills

## PRODUCTION

- CP** Datsun "Z" series, Mazda RX7, Porsche 914/6 & 924 Turbo, Sunbeam Tiger, Triumph TR-6 & TR-8
- DP** Lotus Super 7, Datsun 2000, Triumph GT-6, Yenko Stinger, Porsche 914-S
- EP** Porsche 356 series, MGB, Opel GT, Porsche 914/4, Triumph TR-4
- FP** Saab Sonnet, MG Midget Mk III & IV, Lotus 7, Triumph Spitfire Mk III & IV & 1500
- GP** MG Midget Mk I & II, Triumph Spitfire Mk I & II, MGA, Porsche Coupe, Austin Healy Sprit 1100, Fiat X1/9, Fiat 124 Spider
- HP** Austin Healy Sprite Mk I & II, Fiat 850, MG Midget 948, Fiat Abarth

## SHOWROOM STOCK

- SSA** Porsche 924, Datsun 280Z, Capri V-6, Mustang Cobra, Mazda RX-4 & RX-7
- SSB** Datsun 200 SX, Fiat 124, Scirocco, Dodge Colt
- SSC** Pinto, VW Rabbit, Renault LeCar, Mustang 2.3, Fiesta, MGB Pontiac Astre, Honda Civic, Toyota Corolla

## SPORTS RACING

- ASR** over 1300 cc but less than 6000 cc
- CSR** over 850 cc up to 1600 cc (with restrictions)
- DSR** below or equal to 850 cc
- S/2000** uses Ford 2000 cc overhead cam engines only

## GT CLASSES

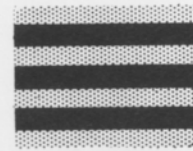
- GT-1** Camaro, Dodge Aspen, Ford Cobra II, Corvette, Shelby GT-350, Porsche 911 SC
- GT-2** Opel 1900, Datsun 510 1800, Mustang 2300, Pinto 2000 & 2300, Cosworth Vega,
- GT-3** Ford Escort/Lynx, VW Scirocco, VW Rabbit, Datsun 200 SX, Mazda RX 2, Toyota Celica, Pinto 1600, Fiat 124 Sports Coupe, Datsun 510 1600, Dodge Colt, Toyota Corolla 1600
- GT-4** Honda Civic, Austin/Morris Mini Cooper, VW 1300, NSU TT, Renault LeCar, Fiat 124 1200, Toyota Corolla 1200

## FORMULA

- FF** Formula Ford - Cortina or Pinto 1600 cc engine, strict weight to engine ratio with driver's weight included in total legal weight, very equal class
- FV** Formula Vee - all Volkswagen components, 1200 cc engine, driver's weight included in total legal weight, very competitive class
- F/AKTC** Formula Atlantic - choice of engines in over 1100 cc up to 1600 cc range, wings and other modifications allowed, not meant to be an inexpensive race car
- F/CNTL** Formula Continental - engine up to 1100 cc, rear wings allowed, combines the modifications of the previous Formula C and Formula Super Vee classes
- F440** Formula 440 - utilizes Fuji two-cycle snowmobile engines and drive train, rigid suspension, wings permitted
- F4** Formula Four - Canadian class, motorcycle engine power plant, engine size determines weight and transmission allowed

# flags

**yellow with red stripes**



Take care, oil has been spilled or a slippery condition exists somewhere in your vicinity. Look at the track surface.

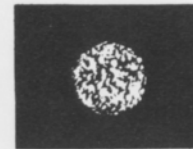
**black**



Sloppy or dangerous driving. Complete the lap you are on, then stop at the Start/Finish line for consultation with the Chief Steward.

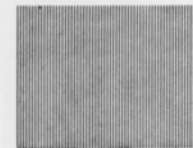
Black flag (displayed on all corner stations) means the race is stopped. Slow down immediately and proceed around the track with extreme caution to the pit lane for a re-start.

**black with orange ball**



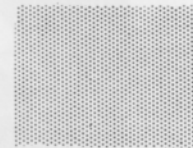
(Meatball black flag) There is something mechanically wrong with your car. Proceed to your pits at reduced speed.

**green**



(Or no flag) Course is clear.

**yellow**



(Stationary) Take care, danger, no passing.  
(Waving) Great danger, be prepared to stop, no passing.

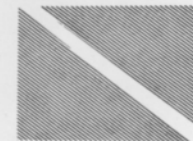
**red**



Stop immediately, clear the course as well as circumstances permit; the race has been stopped.

Waving red (displayed by the Starter only) means the race is stopped, slow down immediately and proceed around the track with extreme caution to the pit lane.

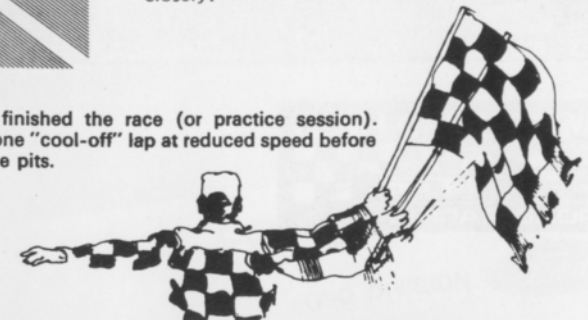
**blue with diagonal yellow stripes**



(Motionless) Another competitor is following you closely.

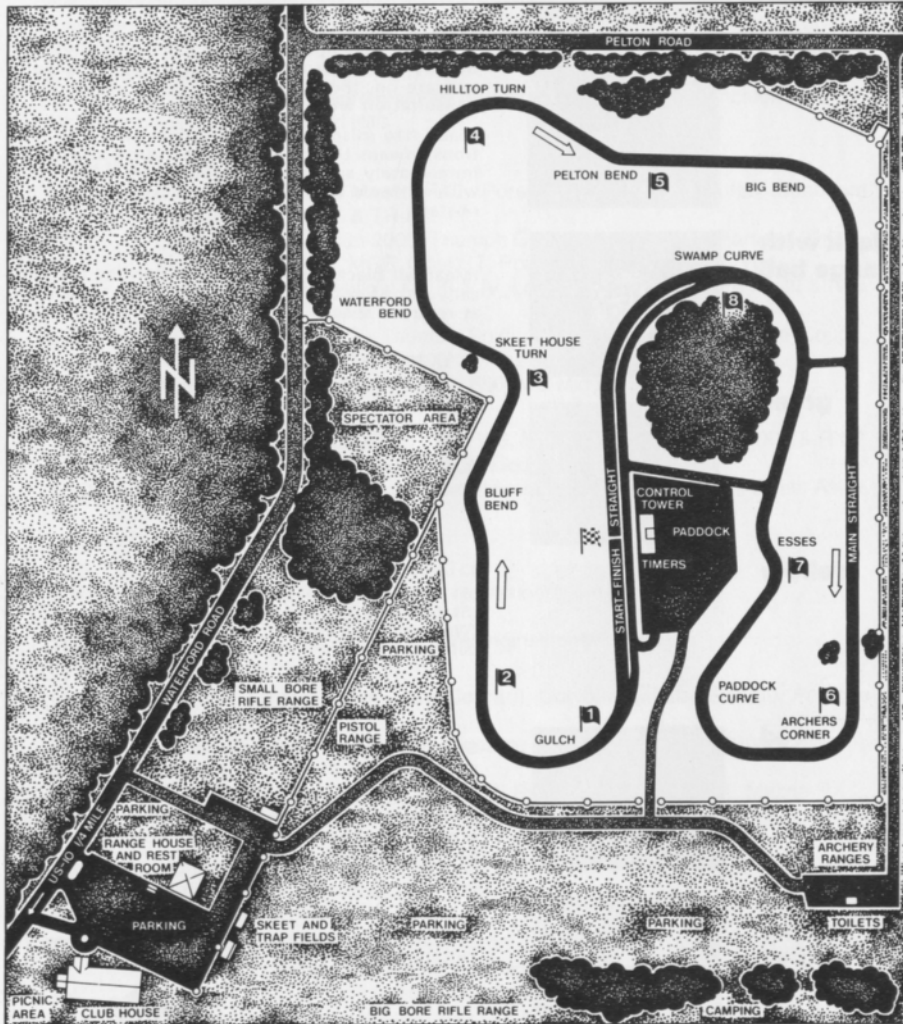
**checkered**

You have finished the race (or practice session). Complete one "cool-off" lap at reduced speed before entering the pits.



## waterford hills course map

a 1.5 mile  
asphalt road course  
at waterford,  
michigan



# FROM STOCK... TO SEBRING



FORD MUSTANG  
FORD DIVISION 