

FALVEY MOTORS



THE BEST JAGUARS EVER BUILT:
There is no formula for the creation of a classic. Yet, for more than 50 years Jaguar has given the world classic after classic.

Here are two of the finest Jaguars ever built: the magnificent Series III sedan and the awesome V-12 powered S-type GT.

Both share the inimitable Jaguar qualities of graceful design, quick response and agile handling. Both are equipped with precise power rack

and pinion steering, racebred four-wheel independent suspension and decisive four wheel power disc brakes.

Inside, Jaguars provide a level of luxury and quiet seldom, if ever, equalled in a high performance motorcar. Test drive them today. ENJOY TOMORROW BUCKLE UP TODAY.

JAGUAR
A BLENDING OF ART AND MACHINE



15 Mile (Maple) between Coolidge and Crooks

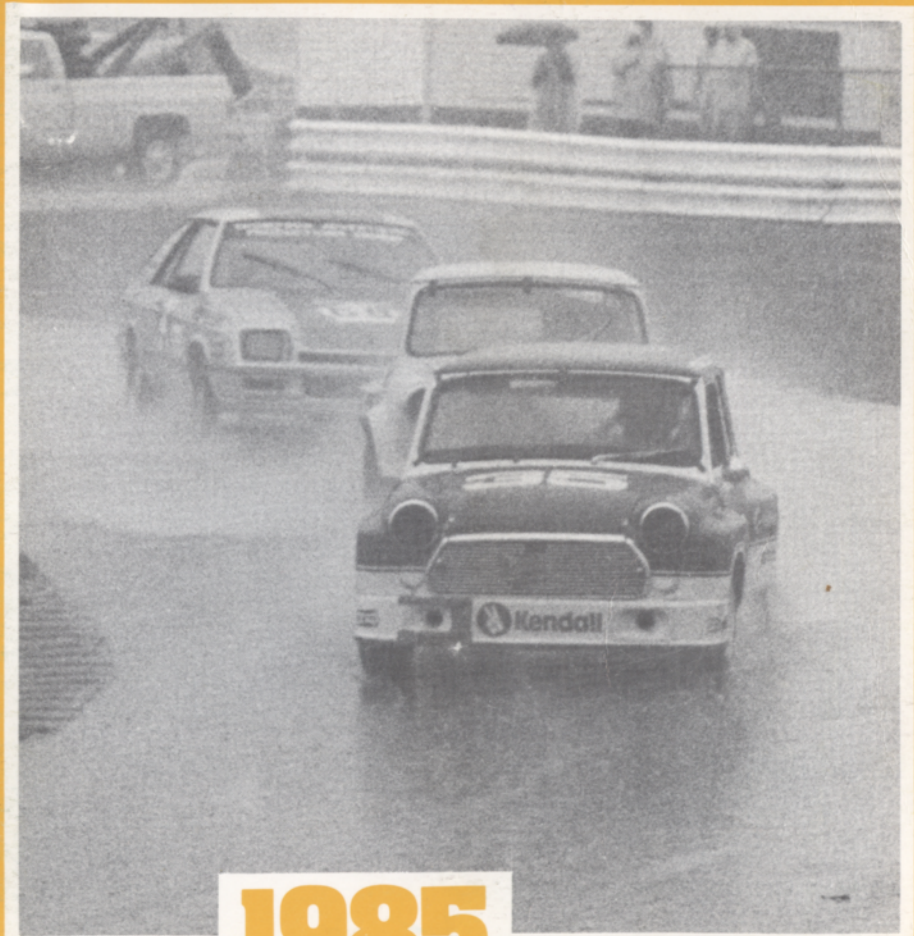
40 years... Creating the Competition!!

FALVEY

WATERFORD HILLS

ROAD RACING

oakland county sportsmen's club



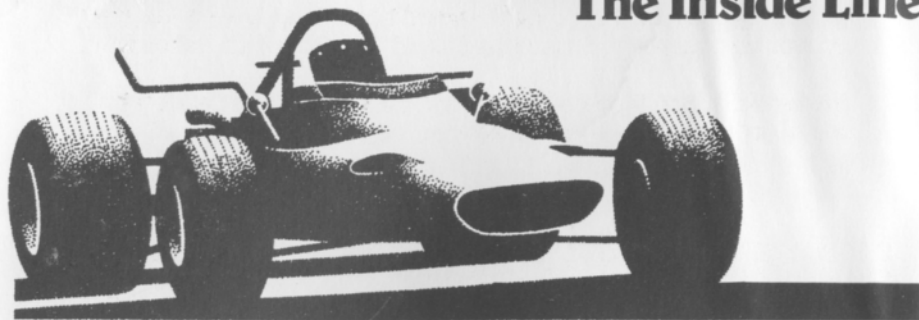
1985 Waterford Digest

FALL CLASSICS

SEPTEMBER \$2.00

1985 Waterford Digest

The Inside Line



Welcome to the final race weekend of the 1985 season. The points standing for the Top Ten drivers are:

1. Ray Krom	100 pts.
2. Jerry Morlewski	97 pts.
3. Pat Nowak	97 pts.
4. Doug Goad	93 pts.
5. Tom Kozak	89 pts.
6. Lew Cooper	87 pts.
7. Sam Hamilton	85 pts.
8. Jac Brown	85 pts.
9. Tom Goad	82 pts.
10. Bob Schneider	82 pts.

You can be sure everyone will be going for broke in the scramble for those final points.

A special welcome to everyone from Mac Tool/Ford Motorsport, this weekends sponsor. And also to the members of the British car clubs who are here for their annual get together.

As of this writing, next seasons schedule looks like this: Race weekends, May 3-4, May 24-25, June 28-29, July 26-27, August 30-31, and September 27-28. In addition the Meadowbrook Historic Races are set for August 2-3. We also plan on having two drivers schools, April 26-27 and August 16-17.

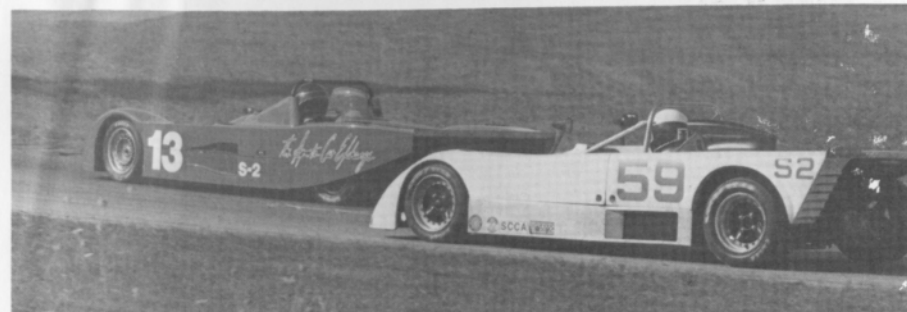
If you are interested in becoming a member, going through drivers school, or becoming a worker, you are welcome to attend our monthly meeting. The meeting is held in the club house on the first Wednesday of the month. That is the log cabin you pass on your way into the track.

1985 Waterford Digest

In January we will have our annual display at Autorama. Be sure to stop by and say hello. We'll have discount cards with the new schedule, posters and back issues of the Digest to give away.

We would like to thank everyone for the support this season and we hope to see each and everyone of you again next season.

Mike White

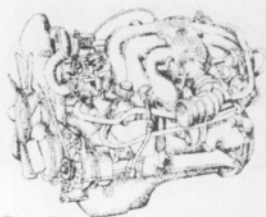
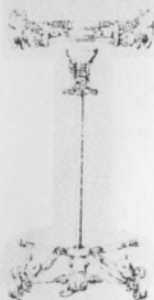
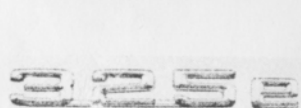


AL BIZER

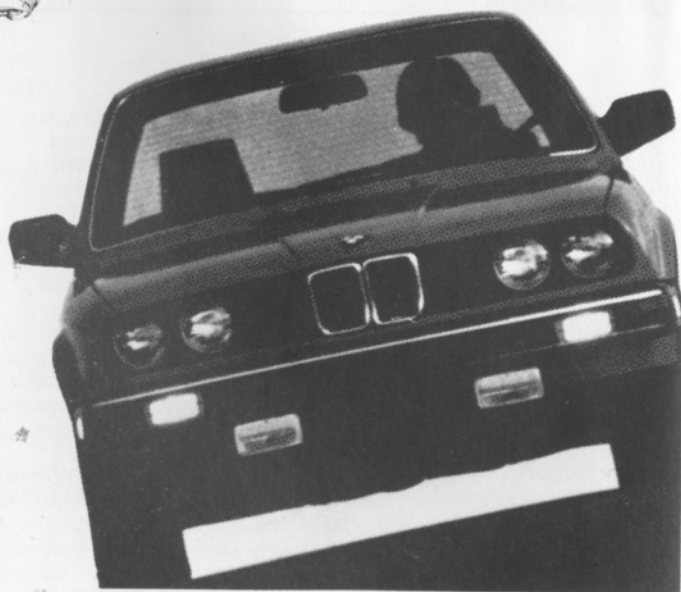
Officials

Waterford Hills Road Racing Club	
President	Don Burry
Chief Steward	John Morris
Assistants	Ed Atkinson Barb Kitch
Stewards of the Meet	Dan MacDonald Peter Quenet Mike White Joe Prato
Director of Racing	Jerry Morlewski
Race Coordinator	Dave Hinman
Chief of Timing and Scoring	Peggy Krom
Chief of Flags and Communications	Dan DiRienzo Jr.
Assistant Chief of Flags and Communications	Willy Perez
Chief Starter	Hal Goff
Chief Tech Inspector	Elmer Dickinson
Chief Paddock Marshal	R. A. Albo, Sr.
Chief Grid Marshal	Lisa Kitch
Chief Course Marshal	Dave Sanders
Chief Race Medical	Blackie Meyers
Chief Registrar	Carol Humphreys
Licensing Chairman	Jerry Shiloff
Membership Chairman	Lee White
Trophy Chairman	Cynthia Kempton

INTRODUCING THE ONLY SPORTS SEDAN MORALLY ENTITLED TO BORROW THESE INNOVATIONS FROM BMW.



THE ULTIMATE DRIVING MACHINE.
BMW, MUNICH, GERMANY.



© 1982 BMW of North America, Inc. The BMW trademark and logo are registered trademarks of Bayerische Motoren Werke, A G.

Erhard B.M.W. Inc.

24130 Telegraph Rd. at 9½ Mile, Southfield, 352-6031



ClassicAuto
SHOWPLACE
LTD

1820 AUSTIN TROY, MICHIGAN 48083
PRIVATELY OWNED SPORTS AND SPECIAL INTEREST
AUTOMOBILES FOR SALE

UP TO 40 AT ONE INDOOR LOCATION
WE WILL SELL YOURS — PHONE FOR CONSIGNMENT DETAILS

524-0210

STUFF

overill racing

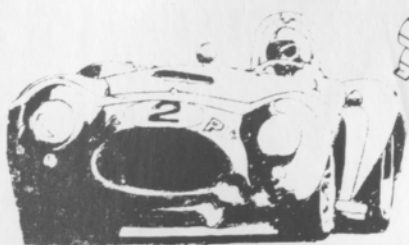
parts and service for serious racing

PANASPORT LIGHT ALLOY RACE WHEELS
KONI RACING SHOCKS
LOLA CARS
HEWLAND GEARBOX PARTS
FERODO BRAKE PADS

ROYAL OAK, MICHIGAN 48068 313-885-4177

CRANE
CROCKERS

Cyclone



Redford Speed

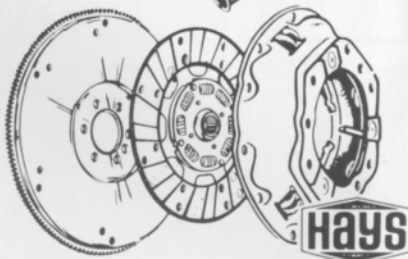
26577 GRAND RIVER
532-2050 or 532-6223
10-8 MON-FRI 10-6 SAT

Of Special Interest:
SIDEMOUNT HEADERS
ROLL BARS
KONI SHOCKS
SWAY BARS
DRIVING LIGHTS
COMP. SEAT BELTS
AND HARNESSSES
RACING CAMS
LAKEWOOD
HOLLEY CARBS
TRANS AM OIL PANS
RACING OIL
HOOKER HEADERS
HURST
MALLORY & ACCEL
IGNITION SYSTEMS

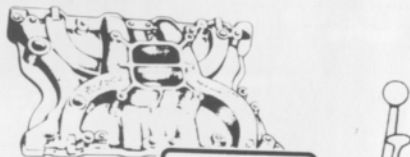


SYMBOL OF
SW
EXCELLENCE

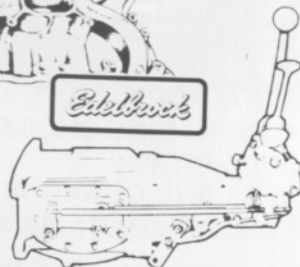
BlockJack
Headers



CRANE
Cams



Edelbrock



MR. GASKET CO.

HURST SHIFTERS



CIBIE MARCHAL PARIS-RHONE

FOR
PORSCHE
SAAB
RENAULT
PEUGEOT
(313) 294-1700

Manufacturers of Quality Automotive
Performance Lighting Products
And Electrical Components
An ACTIVITY of Value
St. Clair Shores, MI 48082

New, Used reproduction Parts and Accessories
Custom Paint and Body Repair

BOJAX

HiTech Automotive
design and fabrication

DOUG FEHAN
BOB FEHAN
313/549-5410

4712 Fernlee
1st Block East of Coolidge, S. of 14
Royal Oak, Michigan 48073

(313) 862-8500



Security Associates, Inc.
COMMERCIAL, INDUSTRIAL, RESIDENTIAL SECURITY

JOHN G. NOLAN
State License #BA0088

16245 MEYERS
DETROIT, MICHIGAN 48235

SMR/PCA MEMBER

BILL COOK + **PORSCHE + AUDI**

"NOBODY EVEN COMES CLOSE"



37901 Grandriver at 10
Farmington Hills

OPEN MONDAYS TILL 9:00
TUES THRU FRI TILL 6:00

471-0044

**FOREIGN
AUTOMOTIVE
SUPPLY, LTD.**



Known for our **LOW, LOW PRICES**
OEM QUALITY PARTS • LARGE INVENTORY • REPAIR MANUALS
HIGH PERFORMANCE LIGHTS • BOSCH • UPS DAILY

Hours to serve you:
Weekdays: 8:30-7:30
Saturdays: 9:00-5:00
SUNDAYS: 11:00-3:00

380 West 11 Mile
Madison Heights
11 Mile I-75 I-696
John R.

QUESTIONS? **542-6150**



Quartz Euro Code
Lighting by
**MARCHALL,
HELLA**
Exhaust Systems
by **ANSA**
Suspension by
**KYB,
SUSPENSION
TECHNIQUES,
ADDCO**

Racing Equipment
by **BELL,
YANKEE**
Rollbars, Air Dams,
Sports Car Apparel



**Accessory
House inc.**
313-548-4488
23257 woodward
ferndale mi. 48220

VAST SELECTION OF
IMPORT AUTO ADORNMENTS
WORLD'S FINEST MANUFACTURERS
FOR THE DISCRIMINATING DRIVER



SUNDAY, AUGUST 25 RACE RESULTS CLASS RACES

	CLASS	DRIVER NAME	CITY	CAR	BEST LAP
Race 1	GT5	Ted Wollesen	Clarkston	Mini Cooper	1:21.53
	SSGT	Thomas Goad	Birmingham	Trans AM	1:23.11
	SSX	Ron Miller	Birmingham	Honda CRX	1:27.42
	RCUP	Chuck Little		Encore	1:31.36
	ITB	Ray Krom	Plymouth	Scirocco	1:32.30
	SSB	Burck Grosse	Bloomfield Hls	Citation X11	1:32.10
Race 2	FV (1st)	Kerry Bowman	Livonia	Caracal C	1:17.86
	FV (2nd)	James Bowman	Redford	Lynx C	1:17.32
	FV (3rd)	T.J. Shaver	Livonia	Lynx TJ3	1:17.86
R 3	S2	Robert Schneider	Detroit	Lola 594	1:11.72
	EP	Skip Froh	SCS	Porsche	1:17.84
	GP	Todd Claucherty	Troy	Sprite	1:22.24
	SREN	Steve Ives	Durand	SP Renault	1:23.37
	HP	Sam Hamilton	Ann Arbor	Sprite	1:25.57
Race 4	FF	Lewis Cooper	GPW	Swift DB1	1:12.26
	FFR	Jac Brown	Ortonville	Lola	1:19.78
	F4	Dennis Whitehead	Windsor, Ont	Vixon	1:20.84
Race 5	GT1 (1st)	Bill Wink		Camaro	1:16.36
	GT1 (2nd)	Doug Buist	Mattawan	Corvette	1:18.48
	GT3 (1st)	Doug Goad	Farmington Hls	Opel Manta	1:20.62
	GT3 (2nd)	Tim Pott	Ann Arbor	Porsche 914	1:20.73



FEATURE RACES

RACE 1

1st	FV	Dennis Hamilton	Dearborn Hts	ST1	1:18.53
2nd	FV	James Bowman	Redford	Lynx	1:18.33
3rd	FV	Scott Kiefer	Howell	Caracal	1:18.14
4th	FV	Greg Assenmacher	Dearborn Hts	Caracal	1:18.81
5th	FV	Stu Delaney		Caldwell	1:19.11

RACE 2

1st	GT5	Ted Wollesen	Clarkston	Mini Cooper	1:20.58
2nd	GT5	Dan Hill	Utica	Mini Cooper	1:21.76
3rd	SSGT	Thomas Goad	Birmingham	Trans AM	1:23.84
4th	SSGT	Bill Bailey	Bloomfield Hls	Firebird	1:23.94
5th	SREN	Steve Ives	Durand	SP Renault	1:24.22

RACE 3

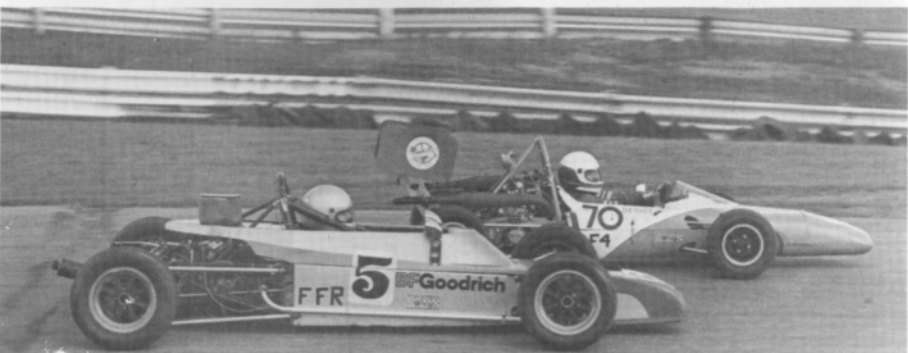
1st	FF	Don Fitz	Redford	Crossle 32F	1:11.82
2nd	FF	James Termote	Manitou Beach	Royale RP36	1:12.49
3rd	FF	David Tyndall	Berkley	Citation	1:13.09
4th	FF	Bill Shamick	Brighton	Zink	1:13.40
5th	FF	Richard Young	Troy		1:15.78

RACE 4

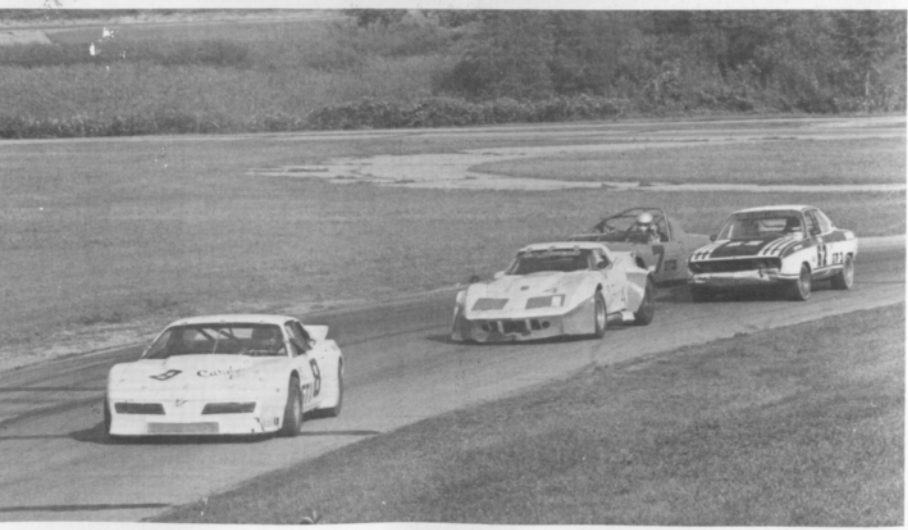
1st	S-2000	Bob Schneider	Detroit	Lola 598	1:13.02
2nd	GT-1	Dave Buist	Royal Oak	Corvette	1:18.95
3rd	GT-X	Pete Morgan	Pontiac	Corvette	1:18.66
4th	GT-3	Doug Goad	Farmington Hls	Opel Manta	1:19.63
5th	GT-3	Tim Pott	Ann Arbor	914 Porsche	1:20.20



AL BIZER



AL BIZER



AL BIZER



DON CASTLE



AL BIZER



**MUSTANG GT
AND MAC QUALITY TOOLS...
THE PERFORMANCE TEAM**

**SEE THE MAC TOOL
GT-1 MUSTANG ON
SEPTEMBER 28-29 1985
AT THE
WATERFORD HILLS
MAC TOOL WEEKEND**



MOTORSPORT



DON CASTLE



DON CASTLE



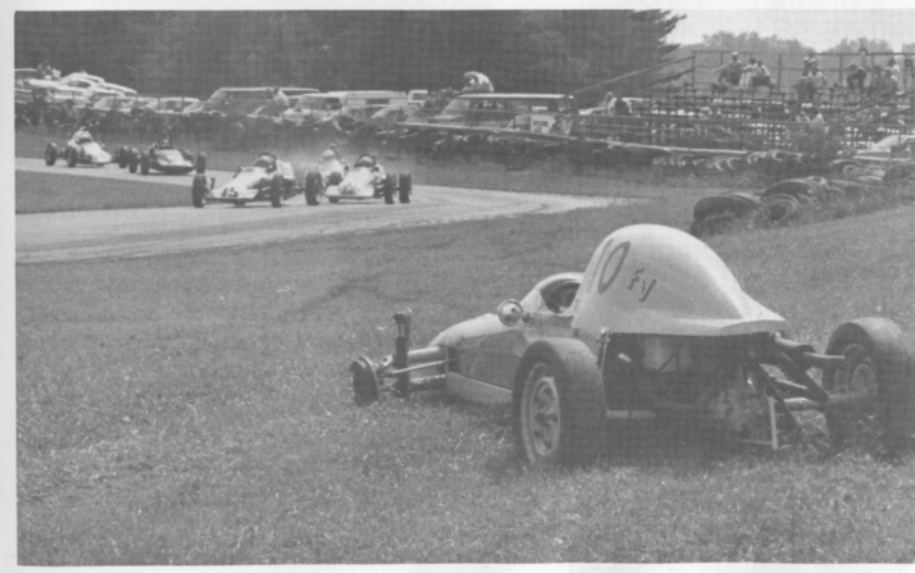
KARL RACENIS



KARL RACENIS



DON CASTLE



DON CASTLE

Comp T/A®

BF GOODRICH

T/A HIGH TECH RADIALS

**WE'VE GOT THE TIRES
TO MAKE YOUR
CARS AND TRUCKS
PERFORM.**

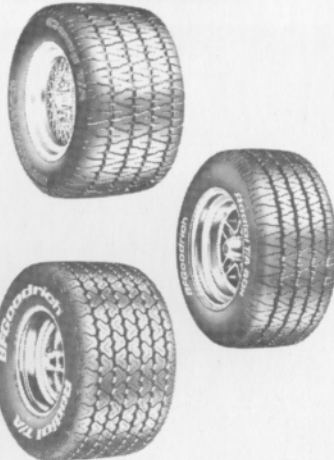


COMP T/A®

The Ultimate High-Performance
Street Radial.

RADIAL T/A® 60H

Optimum Performance...
Distinctive Style.



RADIAL T/A® 50

Solid Performer...
Classic Good Looks.

RADIAL MUD-TERRAIN T/A

RADIAL SPORT TRUCK T/A

RADIAL ALL-TERRAIN T/A™



Designed For The Highway...
Tough Enough For Off-Road.

**TO MAKE YOUR CAR
PERFORM, TALK TO A
PERFORMANCE
SPECIALIST.**

BF Goodrich TIRE CENTER



405 S. Grand Ave.
Lansing, MI 48933
(517) 482-0621

HOURS: 7:00 AM - 5:30 PM WEEKDAYS
7:30 AM - 1:00 PM SATURDAY



Crankshaft Craftsmen Inc.



CRANKSHAFT GRINDING
CAMSHAFT GRINDING
CRANKSHAFT WELDING
POLISHING-STRAIGHTENING
HIGH PERFORMANCE WORK
BEARINGS AVAILABLE

QUALITY BEFORE QUANTITY

RUSS TAYLOR - PRESIDENT

(366-0140)

2819 JEROME EAST OF I-75 • DETROIT

**THINK
WINK**

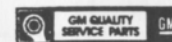


**CARS &
TRUCKS**

Satisfying Car Buyers For Over 42 Years

BILL WINK CHEVROLET

10700 FORD RD., BET. WYOMING & SCHAEFER
DEARBORN, MICHIGAN



582-5400

"KEEP THAT GREAT GM FEELING WITH GENUINE GM PARTS"



AUTOMETRIC BODY SHOPS

American .. Import



818 N. Main
Royal Oak, MI
398-0200

490 S. Telegraph
Pontiac, MI 48053
332-0600

8645 E. 10 Mile
Centerline, MI
757-7491

24465 Gratiot
East Detroit, MI
774-3455



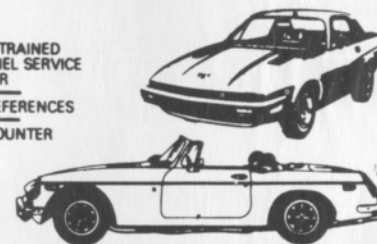
DON CASTLE

IMPORTED CAR SERVICE CO.

Call 293-5566

31529 UTICA RD., FRASER
BET. 13 & 14 MILE

- LET OUR TRAINED PERSONNEL SERVICE YOUR CAR
- LOCAL REFERENCES
- PARTS COUNTER



689-4940

PIRELLI & MICHELIN TIRES

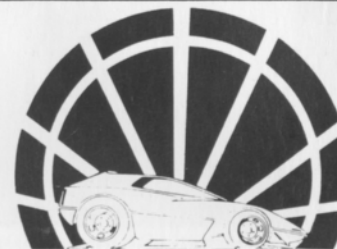
COMPLETE REPAIR SERVICE

- MERCEDES BENZ
- PORSCHE
- VOLKSWAGEN
- AUDI
- B-M-W

1725 E MAPLE RD (15 MILE) TROY
1 BLOCK EAST OF I-75



Complete Line of
Brand Name and
Custom Parts and
Accessories



Specialists in all
phases of High
Performance Work

RACELAND AUTO SUPPLY

PERFORMANCE RACING ENGINES


26700 W. 8 Mile Rd., Southfield, MI 48034

355-2288



Bet. Inkster and Telegraph

COMPLETE MACHINE SHOP

OPEN 6 DAYS A WEEK - CLOSED SUNDAY



Miller
MADE THE AMERICAN WAY



OFFICIAL BEER SPONSOR

WATERFORD HILLS ROAD RACING

POWERS DISTRIBUTING CO., INC.

2000 PONTIAC DRIVE
PONTIAC, MICHIGAN 48053

682-2010

SEE DANNY SULLIVAN'S 1985 WINNING INDY 500
MILLER AMERICAN RACE CAR AT WATERFORD HILLS RR
AUGUST 25th

Beer Brewed by Miller Brewing Co., Milw., WI

LOOKing back

with Bizer Sept. 31, 1967



HEADING FOR TURN ONE, TOM McDONALD'S MGA BEGINS TO LOSE ITS LEFT WHEEL AND AXEL SHAFT...



... A TURN WORKER ATTEMPTS TO HALT ITS PROGRESS WITH HIS FLAG ...



... IT WINDS UP SAFELY IN ANOTHER WORKERS HANDS AS TOM EMERGES FROM HIS CAR.

Beck's-ULTRA HIGH PERFORMANCE

7000 SCHAEFER ■ DEARBORN ■ MICH. 48126
 (313) 846-2600
 (800) 482-9381 [Mich. toll free]

TIRES

GOODYEAR

BF Goodrich

YOKOHAMA

PIRELLI

BF Goodrich
RACE TIRE PROGRAM

SHOCKS



10% DISCOUNT TO TACA MEMBERS
 MAJOR CREDIT CARDS ACCEPTED

WHEELS

BBS

GOTTA

weds
TURBO WHEELS

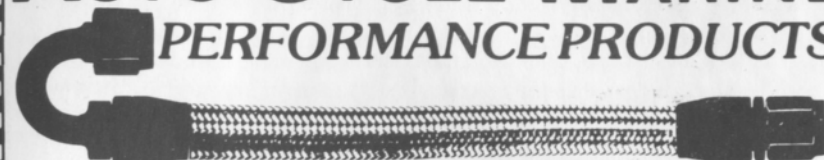
ENKEI

centra CENTRA

Epsilon
ROAD WHEELS



AUTO-CYCLE-MARINE PERFORMANCE PRODUCTS



"THE LARGEST INVENTORY IN THE MIDWEST"
 HOSE ★ FITTINGS ★ ADAPTERS

Aeroquip
 high performance hose and fittings

(313) 280-1171

4940 Delemere, Royal Oak, MI 48073

Peter Betrus, Jr.

Catalog \$2

EARL'S
 PERFORMANCE PRODUCTS

Thomas J. Betrus

Hoosier[®]

RACING TIRES

JAMALC RACING

(517) 223-8704

John
Morris

Al
Ciaramitaro

1985 Waterford Digest

Average Lap Speed

Min/Sec	MPH	Min/Sec	MPH	Min/Sec	MPH
1:00	85.326	1:17	66.488	1:34	54.463
1:01	83.927	1:18	65.635	1:35	53.890
1:02	82.574	1:19	64.805	1:36	53.329
1:03	81.263	1:20	63.995	1:37	52.779
1:04	79.993	1:21	63.204	1:38	52.240
1:05	78.762	1:22	62.434	1:39	51.713
1:06	77.569	1:23	61.681	1:40	51.196
1:07	76.411	1:24	60.947	1:41	50.689
1:08	75.288	1:25	60.230	1:42	50.192
1:09	74.197	1:26	59.530	1:43	49.704
1:10	73.137	1:27	58.846	1:44	49.227
1:11	72.106	1:28	58.176	1:45	48.758
1:12	71.105	1:29	57.523	1:46	48.298
1:13	70.131	1:30	56.884	1:47	47.846
1:14	69.183	1:31	56.259	1:48	47.403
1:15	68.261	1:32	55.647	1:49	46.968
1:16	67.363	1:33	55.041		

The Waterford Hills Road Course is 1.4221 miles long (7,509 ft. center line of track). To determine the speed of any individual car, time it for one complete lap and read off the speed from this table.

Class Records

ASR	Ed Murray	Chevron	1:10.9	9/81
CSR	Evan MacDonald	M-2	1:10.5	9/78
DSR	Ed Murray	Jedi	1:12.5	4/85
S/2000	Larry Campbell	Lola	1:11.5	9/79
EP	Lou Livengood	Porsche 356	1:16.3	6/80
FP	Barry Hartzel	MG Midget	1:16.2	7/78
GP	Kirk Carlson	MG Midget	1:17.0	8/81
HP	Paul Cameron	Sprite	1:20.4	7/78
GT-1	Tim Taylor	Corvette	1:13.7	9/83
GT-2	J. Byron Walker	Datsun	1:16.5	9/80
GT-3	Craig Allen	Lotus Elan	1:16.4	9/83
GT-4	Jerry Morlewski	Fiat 124	1:19.0	9/83
GT-5	Ted Wollesen	Mini Cooper	1:19.9	5/84
ITB	Ray Krom	Scirocco	1:32.30	8/85
SS-GT	Tom Goad	Firebird	1:23.11	8/85
SSA	Bill Bailey	Mustang	1:26.2	6/85
SSB	Jack Broomall	Shelby	1:27.4	6/85
SSC	Ron Lindensmith	Fiat X1/9	1:29.6	9/82
FF	Vince Muzzin	Royale	1:09.4	6/78
FV	Lee McLeod	Lynx	1:15.7	7/81
**F/A	Andy Falbo	March	1:06.1	8/83
F/C	Jay Novak		1:09.3	9/84
F440	Jay Novak	EPEE	1:16.0	8/84
F4	Stuart Lamont	Xpit	1:12.5	7/83
FFR	Mark Davison	Crossle 32	1:17.0	5/84

**track record

1985 Waterford Digest

Racing Classes

To insure fairness in competition, all road racing cars are grouped into racing classes by the Sports Car Club of America in its General Competition Rulebook (GCR). Waterford Hills Road Racing observes the GCR regulations with some minor exceptions.

The five Competition groups are: Production (sports cars), Showroom Stock (GT cars and sports cars with minimal modification), Sports Racing (Highly modified engine and body over wheels), GT (enclosed cockpit passenger cars and former big production cars), and Formula (open wheels single cockpit). Racing groups are subdivided into classes of equally competitive cars based upon engine size and handling characteristics.

The cars listed below are representative of their racing classes and include most of those you will see at Waterford Hills.

PRODUCTION

EP	Porsche 356 series, MGB, Opel GT, Porsche 914/4, Triumph TR-4
FP	Saab Sonnet, MG Midget Mk III & IV, Lotus 7, Triumph Spitfire Mk III & IV & 1500
GP	MG Midget Mk I & II, Triumph Spitfire Mk I & II, MGA, Austin Healy Sprite, Fiat X1/9, Fiat 124 Spider, Alfa Romeo, Porsche Coupe
HP	Austin Healy Sprite Mk I & II, Fiat 850, MG Midget 948, Fiat Abarth

SHOWROOM STOCK

SS-GT	new class with current model cars of SSA plus additional modifications allowed.
SSA	Mustang Cobra, Mazda RX series, Porsche 924, Capri V-6, Datsun 280Z
SSB	Triumph TR-8, Scirocco, Dodge Colt, Datsun 200SX, Fiat 124
SSC	Fiat X1/9, Pinto, VW Rabbit, Renault LeCar, Mustang 2.3, MGB, Honda Civic, Toyota Corolla, Pontiac Astre

SPORTS RACING

ASR	over 1300 cc but less than 6000 cc
CSR	over 850 cc up to 1600 cc (with restrictions)
DSR	below or equal to 850 cc
S/2000	uses Ford 2000 cc overhead cam engines only

GT CLASSES

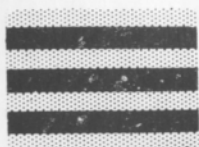
GT-1	Corvette, Camaro, Ford Cobra II, Shelby GT-350, Porsche 911 SC, Dodge Aspen
GT-2	Datsun Z series, Mazda RX7, Porsche 914/6 & 924 Turbo, Sunbeam Tiger, Triumph TR-6 & TR-8
GT-3	Opel 1900, Datsun 510 1800, Mustang 2300, Pinto 2000 & 2300, Cosworth Vega
GT-4	Fiat 124 Sports Coupe, Pinto 1600, Toyota Celica, Dodge Colt, Toyota Corolla 1600, Renault LeCar, Datsun 510 1600, Ford Escort/Lynx, VW Rabbit & Scirocco
GT-5	Datsun 200SX, Austin/Morris Mini Cooper, VW 1300, NSU TT, Honda Civic, Fiat 124 1200, Toyota Corolla 1200

FORMULA

FF	Formula Ford — Cortina or Pinto 1600 cc engine, strict weight to engine ratio with driver's weight included in total legal weight, very equal class
FFR	Formula Ford Radial — the cars are the same as the above class except they must use BF goodrich T/A radial tires.
FV	Formula Vee — all Volkswagen components, 1200 cc engine, driver's weight included in total legal weight, very competitive class
F/ATLC	Formula Atlantic — choice of engines in over 1100 cc up to 16000 cc range, wings and other modifications allowed, not meant to be an inexpensive race car
F/CNTL	Formula Continental — engine up to 1100 cc, rear wings allowed, combines the modifications of the previous Formula C and Formula Super Vee classes
F440	Formula 440 — utilizes Fuji two-cycle snowmobile engines and drive train, rigid suspension, wings permitted
F4	Formula Four — Canadian class, motorcycle engine power plant, engine size determines weight and transmission allowed

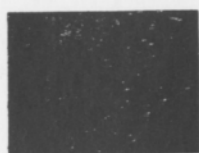
Flags

yellow with red stripes



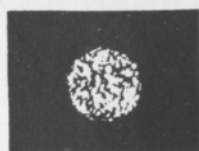
Take care, oil has been spilled or a slippery condition exists somewhere in your vicinity. Look at the track surface.

black



Sloppy or dangerous driving. Complete the lap you are on, stop at the Start/Finish line for consultation with Chief Steward. Waving Black Flag (displayed on all corner stations) means the race is stopped. Slow down immediately and proceed around the track with extreme caution to the pit lane for a re-start.

black with orange ball



(Meatball Black Flag) There is something mechanically wrong with your car. Proceed to your pits at reduced speed.

green



(Or no flag) Course is clear.

yellow



(Stationary) Take care, danger, no passing.
(Waving) Great danger, be prepared to stop, no passing.

red



Waving red (displayed by the Starter only) means the race is stopped, slow down immediately and proceed around the track with extreme caution to the pit lane.

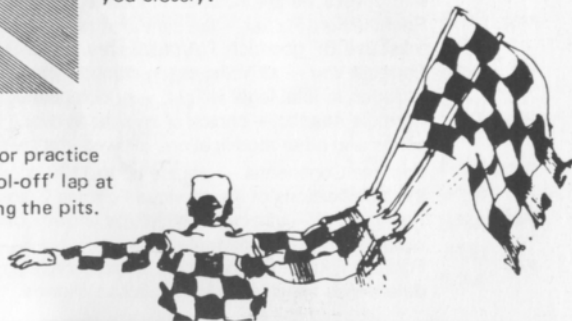
blue with diagonal yellow stripes



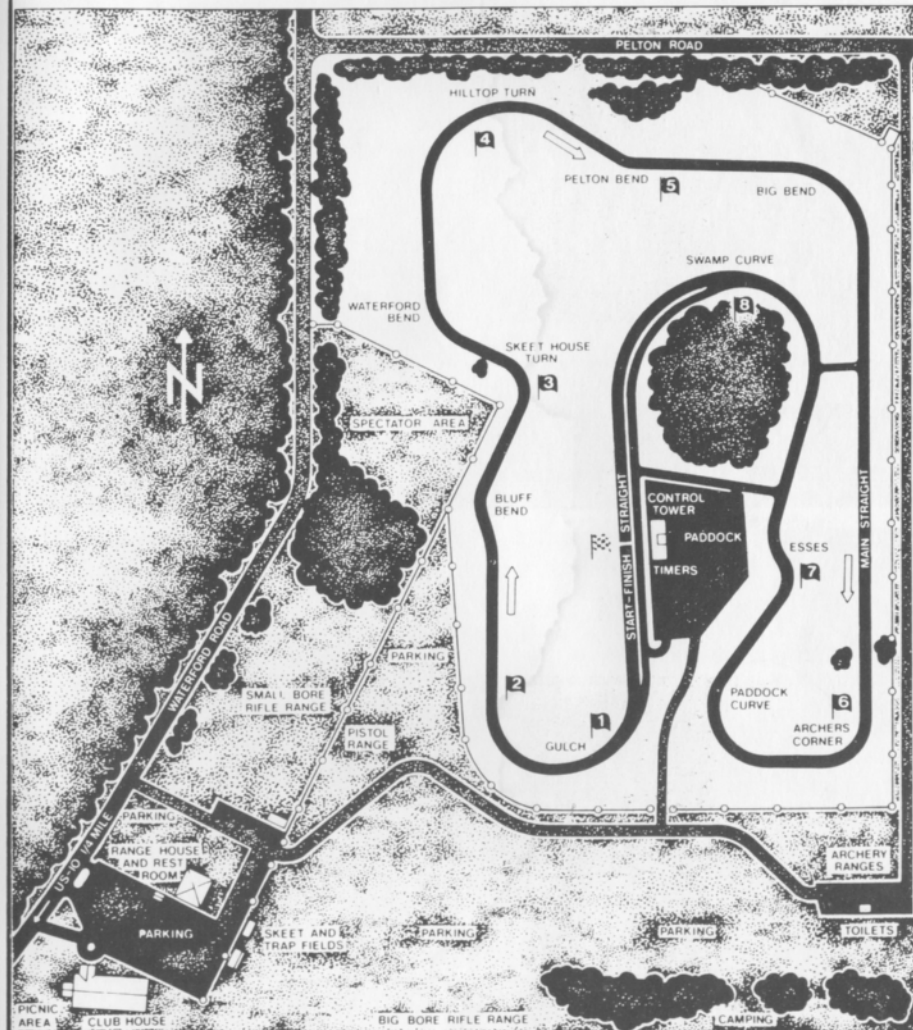
(Motionless) Another competitor is following you closely.

checkered

You have finished the race (or practice session). Complete one "cool-off" lap at reduced speed before entering the pits.



a 1.5 mile asphalt road course at waterford, michigan



1985 Waterford Digest

RACING RAIN OR SHINE



DON CASTLE

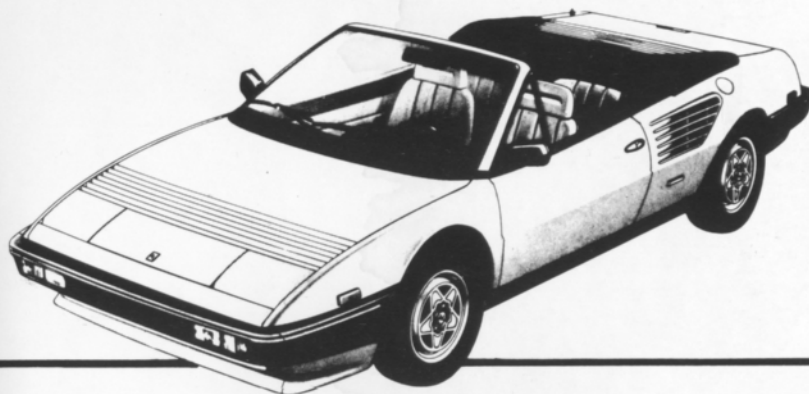


AL BIZER

THE WATERFORD DIGEST

Published by Waterford Hills Road Racing Inc., 1985

Ferrari.



Evolution moves selectively toward perfection.

Mondial Quattrovalvole

A Ferrari is an investment: in pride, in excellence, in achievement. Protect your investment by purchasing and maintaining your Ferrari through your authorized dealer. Only your authorized Ferrari dealer can provide full factory warranty, service and parts.



The Sports-Car Exchange

MICHIGAN'S EXCLUSIVE AUTHORIZED AGENT FOR
FERRARI, MASERATI AND ALFA ROMEO
14510 MICHIGAN AVE. DEARBORN, MICHIGAN 313-581-6222