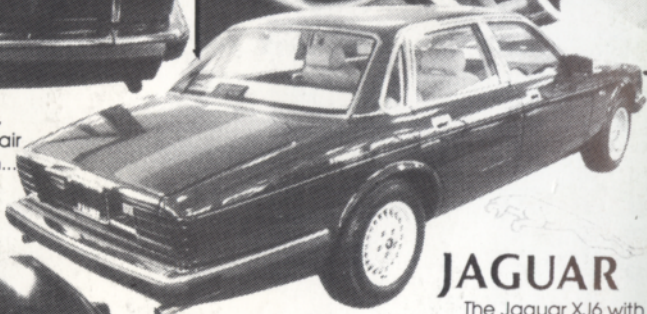
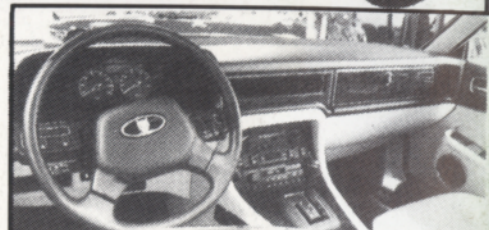
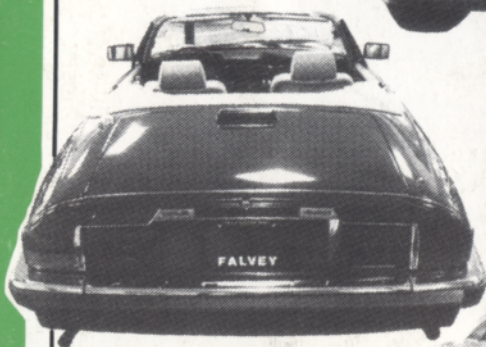
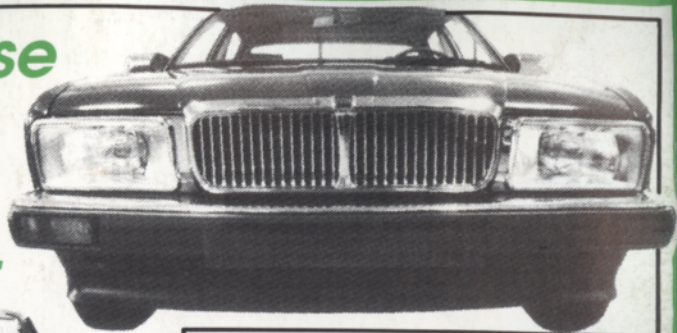


Choose
From
The
Best...

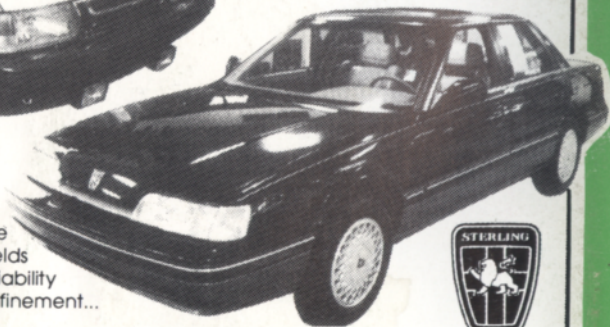


JAGUAR

The Jaguar XJ6 with Falvey installed European style headlights; the luxurious interior; and the graceful rear quarter view...



The Saab 900 Turbo, speed, comfort, style, safety...



The Sterling, the ultimate combination yields the highest level of reliability and refinement...



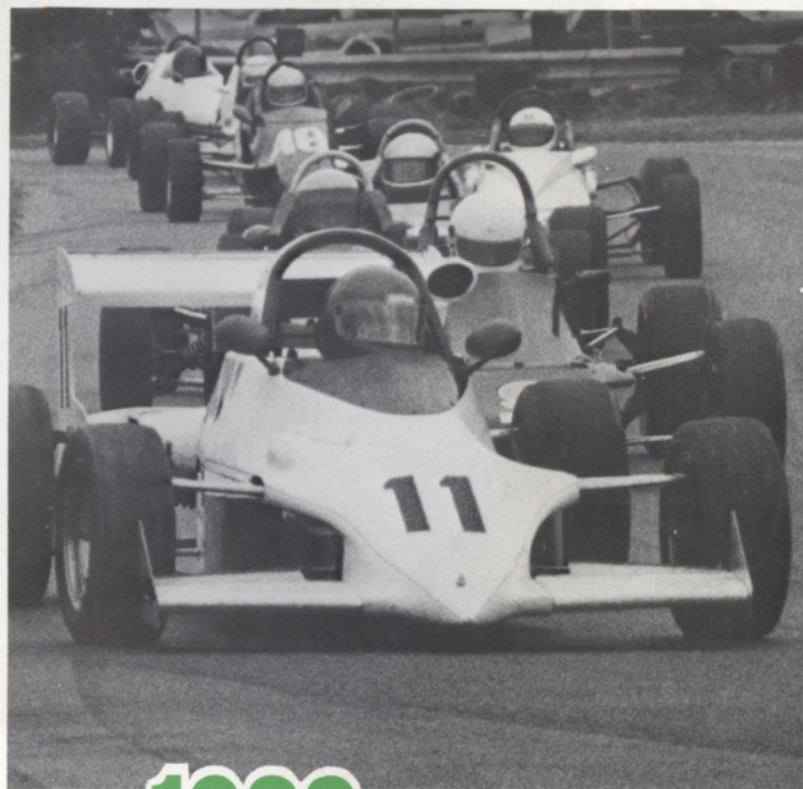
TROY MOTOR MALL (313) 643-6900
1815 Maplelawn, Troy, MI

WATERFORD HILLS



ROAD RACING

oakland county sportsmen's club



1988 WATERFORD DIGEST

SEPTEMBER
\$2.00

TOYOTA TOYOTA TOYOTA TOYOTA TOYOTA TOYOTA TOYOTA TOYOTA

PACE CAR FURNISHED BY

PAGE TOYOTA



8½ & TELEGRAPH
SOUTHFIELD, MICH.

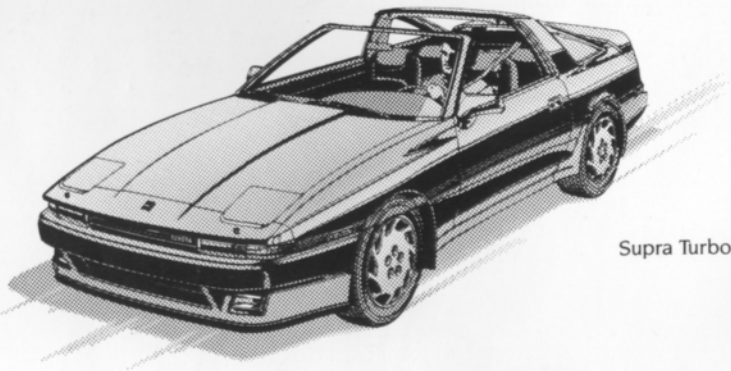
352-8580

MICHIGAN'S #1 TOYOTA DEALER
IN SALES, SERVICE AND BODY REPAIR



WINNER OF THE NATIONAL SERVICE AND
CUSTOMER RELATIONS AWARD FOR 7 YEARS

FINE SELECTION OF USED IMPORT
& DOMESTIC ECONOMY CARS



Supra Turbo*

THE PRIX-RACE FAVORITE — THE TOYOTA CELICA SUPRA.

TOYOTA TOYOTA TOYOTA TOYOTA TOYOTA TOYOTA TOYOTA TOYOTA



DON CASTLE

Contents



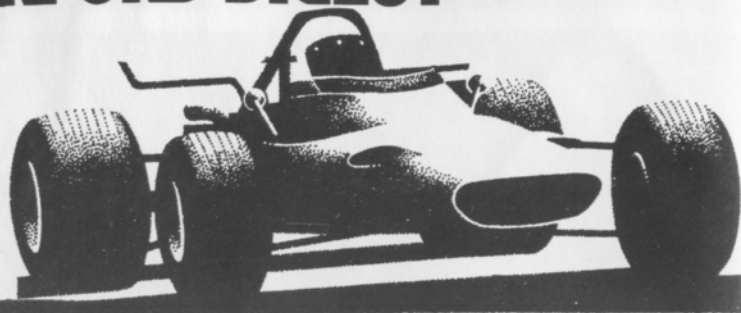
- 2. The Inside Line
- 3. Officials
- 29. Looking Back With Bizer
- 32. Average Lap Speed Chart
- 32. Class Records
- 33. Racing Classes
- 34. Flags
- 35. Course Map
- 36. Racing Schedule

Staff

Editor: *DAN HILL*
 Design and Production: TAURUS ADVERTISING
 Photographers: AL BIZER
 DON CASTLE

Cover Photo by AL BIZER

WATERFORD DIGEST



The Inside Line

September. Show Time. The Grand Finale of the 1988 season! Welcome to Waterford Hills Road Racing. Local lore has it that the September race weekend is the wildest one of the season as the drivers go all-out knowing that they have all winter to get ready for the next race. Well, you can probably chalk that one up to exuberant hyperbole because many of our drivers are looking forward to the SCCA runoffs in October and they certainly aren't interested in making any heavy repairs between now and then.

As for the rest of us, it ain't over 'till it's over and rough racing is slow racing. You don't score points sitting in the tire wall or on the bleachers. And points are important. Several of the 1988 class championships are undecided coming into this weekend. Competition for Top Ten Driver recognition is also extremely close. Most of the races you watch this weekend will determine some portion of the final standings for the season.

And what a season it has been! Michigan's second hottest summer ever has had a real impact on the racing program here at Waterford. First of all, spectator attendance has been down somewhat compared to recent years, an effect felt by most outdoor enterprises without a wave pool or water slides.

Competitors responded to the heat in a variety of ways in an effort to keep themselves, their engines, and their tires within safe operating temperature ranges. Several drivers sported brand new "cool suits," while others resorted to strange looking arrays of flaps, hoses and tubes to direct moving air (not to mention the odd bee) into the cockpit.

Similar arrangements were used to keep engines cool. Some drivers also found it necessary to make tuning adjustments, in effect sacrificing horsepower in order to make due with cooling systems rendered marginal by ambient air temperatures as high as 104°F. Yes! One Oh Four!

As far as adjusting tire pressures and keeping brakes cool, our drivers must have done something right. Nearly every race weekend saw one or more lap record tumble. All this harrying around in the heat took a

WATERFORD DIGEST

toll on our newly paved track. Distinct ripples began to appear in several of the turns as early as June. Repairs were in place for the late July race meet and included patched pavement and FIA type curbs in several of the corners. None the less, the dreaded "marbles", little round balls of tar and dust encrusted gravel, reappeared, sending many normally tidy racers into the weeds.

Cool weather for the August meet made it clear that heat had been the major contributor to our track surface problems. Numerous lap records were set and there was no further deterioration of the pavement. What there was, though, was a tightening of the standings among drivers. And that brings us up to now. Competitive road racing. Every lap is important to each driver trying to nail down a class championship or a spot in the Top Ten. It should be exciting, so sit back and enjoy!

Have a safe and healthy winter. We hope to see you at our club display at Autorama in February 16-19 at Cobo Hall. You will be able to pick up information about next year's racing calendar. And we extend to you our most cordial invitation to come back next spring to help us kick off the 1989 season.

Cal Cortright

Officials

President	Don Burry
Secretary	Peter Quenet
Vice President	Ted Wollesen
Director of Racing	Jerry Morlewski
Race Coordinator	Jim Vollmers
Chief Steward	Barb Kitch
Asst Chief	Eddie Atkinson
Chief of Flags & Communications	Bill Gibbs
Chief Registrar	Carol Humphreys
Chief of Safety	Blackie Meyers
Chief of Timing & Scoring	Erin & Elise Wollesen
Chief Starter	Hal Goff
Chief of Tech	Dave Gernaey
Stewards of the Meet	Dan O'Connor
	Hugo Carlson
	Joe Prato
	Mark Davidson
	Gary Ray
Licensing Chairman	Ray Krom
Membership Chairman	Diane Wollesen
Trophy Chairman	Cynthia Kempton
Grid Marshall	Emily Whitehead
Paddock Marshall	Paul St. Pierre
Course Control	Blackie Meyers
Sound Control	Roger Roeske
Director of Facilities	Dave Hinman
Controller	Dan McDonald
Newsletter Editor	Cindy Anthony
Boutique	Ruth Olsen

THE BMW M3. IT TRANSFORMS AN ENTHUSIAST INTO A FANATIC IN 7.6 SECONDS FLAT.



The new M3 stretches the definition of "street legal" to its outermost limits. It is a bona fide supercar.

Within its taut, aerodynamic skin pulses the pride of BMW's Motorsport racing division. A 192-hp, twin-cam, 16-valve, 4-cylinder street-tuned version of BMW's world champion Formula 1 powerplant. It turns 0-60 in 7.6 seconds, and 143 mph flat out.*

Even more impressive is its performance in everyday traffic.

Sport gearbox and steering and competition suspension keep you confidently in charge. While leather sport seats keep you comfortably ensconced.

Race in for a test drive. The M3 is no ordinary everyday car. But it could convert you into an everyday fanatic.



THE ULTIMATE DRIVING MACHINE.™

© 1987 BMW of North America, Inc. The BMW trademark and logo are registered. *BMW does not condone exceeding posted speed limits.

ERHARD BMW

Michigan's Oldest and Largest BMW Dealer
24130 Telegraph Rd. at 9½ Mile, Southfield

Open Mon. & Thurs.
Until 9 P.M.

352-6030

OPEN SATURDAYS

NEXT DAY DELIVERY

IMPORTED CAR PARTS, INC.

PARTS & ACCESSORIES FOR ALL IMPORTED CARS

"IMPORTED CARS ARE NOT FOREIGN TO US"

SERVING THE AREA FOR OVER 15 YEARS

★ BOSCH ELECTRICAL
★ HAYNES REPAIR MANUALS
★ WEBER CARBURETION
★ BODY PARTS
★ CAR COVERS & MASKS
★ REMANUFACTURED ENGINES

★ KYB SHOCKS
★ CIBIE LIGHTS
★ ANSA EXHAUSTS
★ COMPLETE ENGINES
★ CASTROL OIL PRODUCTS

(ASK ABOUT THE 12 MONTH/12,000 MILE WARRANTY)

6 LOCATIONS TO SERVE YOU

FARMINGTON HILLS 477-0410 <small>32214 W. 8 MILE</small> <small>ANN ARBORS</small> 769-4900 <small>1948 W. STADIUM</small>	WARREN 759-0800 <small>13456 E. 11 MILE</small> NEW LOCATION <small>ALLEN PARK</small> 383-2500 <small>15599 SOUTHFIELD RD.</small>	BERKLEY 546-6010 <small>3860 W. 12 MILE</small> BLOOMFIELD HILLS 334-6700 <small>1717 S. TELEGRAPH</small>
--	---	---

AUTHORIZED DISTRIBUTOR

- BELLhelmets, racemark suits
- CARTEL....brake fluid
- FERODO ...brake pads
- FILTRON ... air filters & kits
- FIRESTONE..race tires
- GIRLING-LOCKHEED... master & slave cyl.
- HYLOMAR. sealants
- INDY CAR MIRRORS ... formula & sports-2
- JONES..... tachometers
- KONI shocks
- LIFELINE... fire systems
- LUKE safety harness

LOLA

• CARS
• PARTS
• SERVICE

Averill Racing Stuff

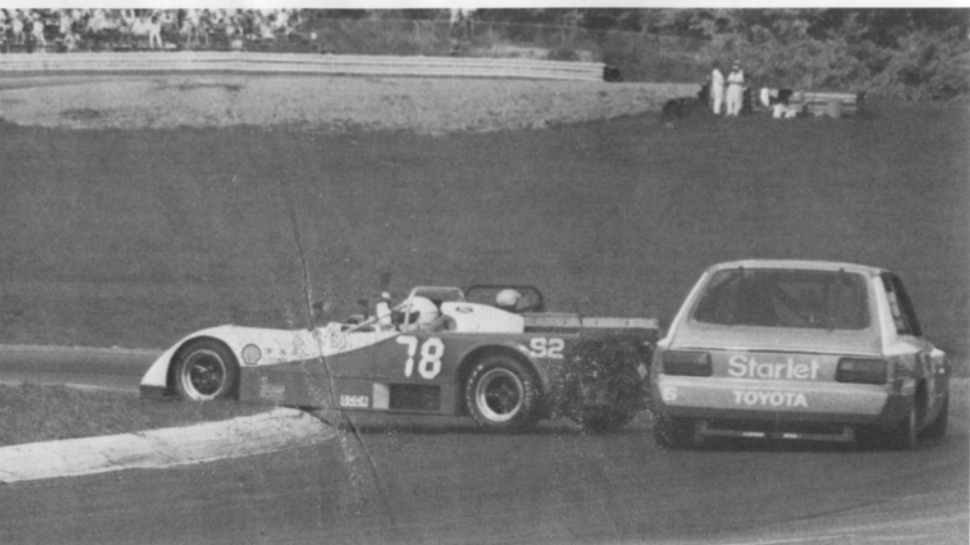
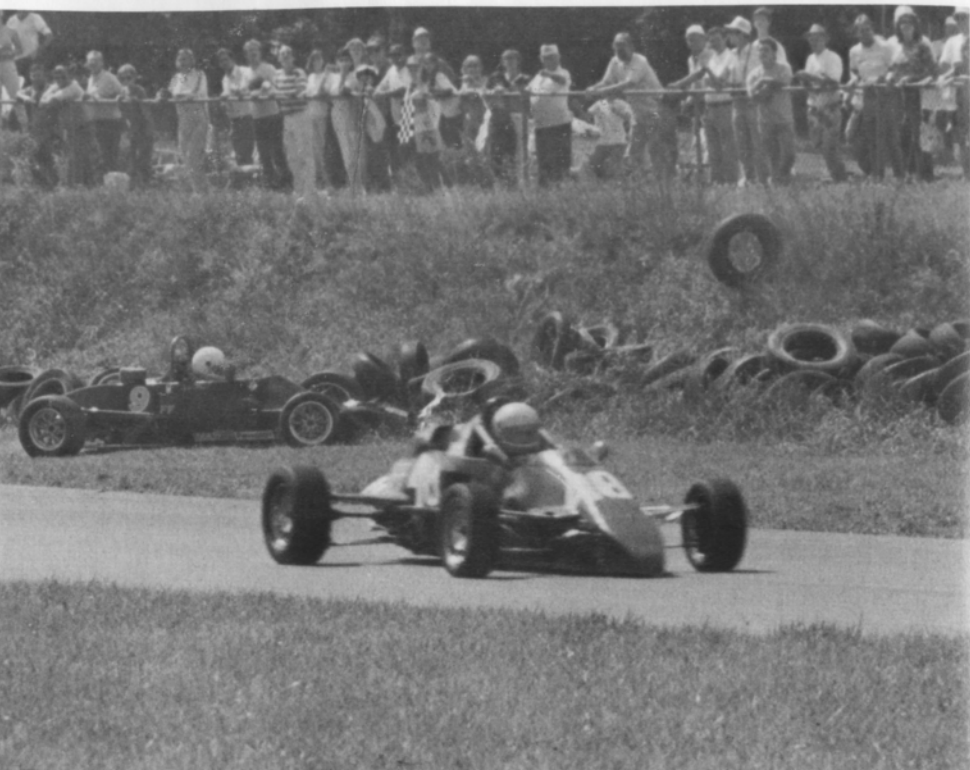
HAZEL PARK, MI
(313) 542-9366

- MERIT master switch
- MOMO steering wheels
- NMB rod ends & bearings
- PANASPORT..one & three piece wheels
- PIT BOARDS..tools, tape, pyrometers
- PULSAR.....racing battery
- QUARTER MASTER... clutch disc assy.
- REDLINE.... oil & cv grease
- SIMPSON... suits & equip.
- SMITH..... gauges
- 1600 FORD PARTS... gaskets, rings, bearings
- CHASSIS REPAIRS - ALIGNMENT, fabrication, welding

5

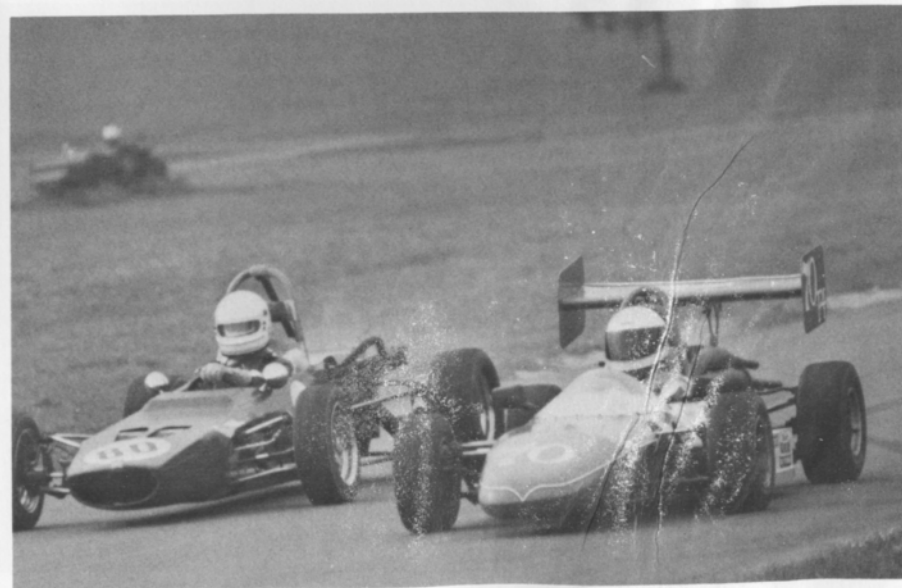
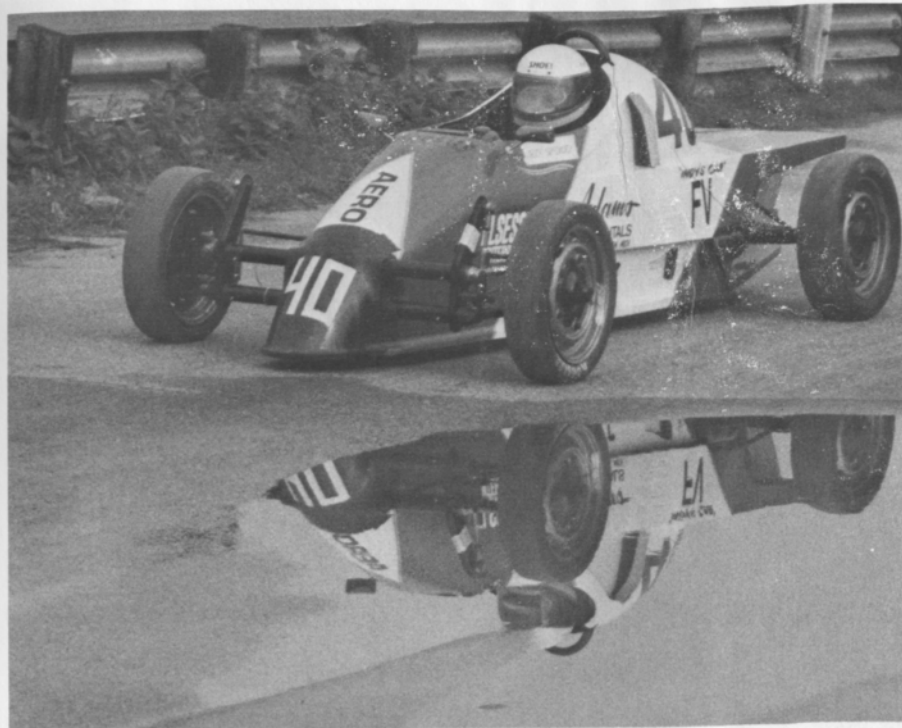
WATERFORD DIGEST

PHOTOS BY AL BIZER



WATERFORD DIGEST

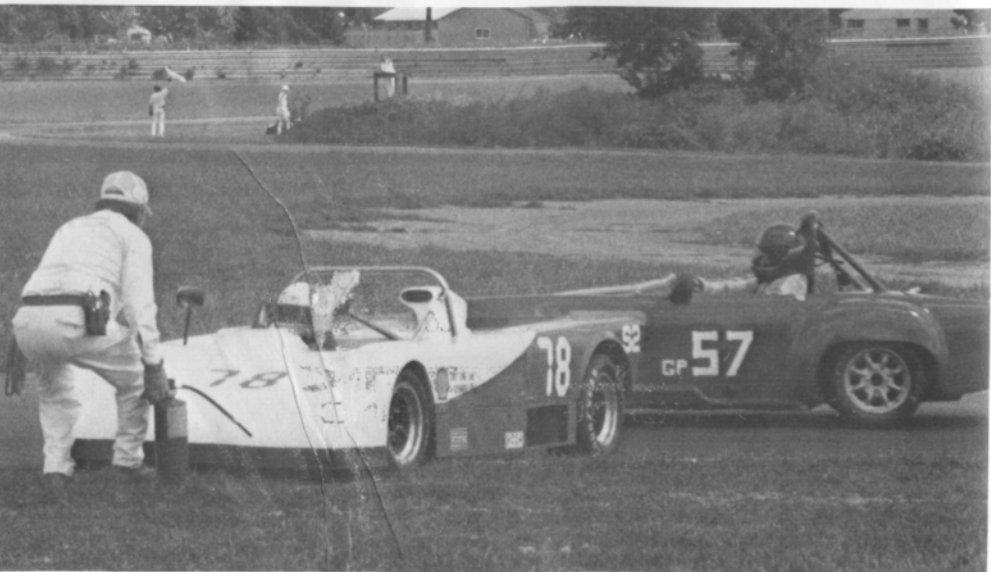
DON CASTLE



AL BIZER

WATERFORD DIGEST

PHOTOS BY DON CASTLE



WATERFORD DIGEST

OUR CARS PERFORM. AND SO DO WE.



Peter Cook, our general manager, certainly performs. He and co-driver Terry Abbott, our service shop foreman, compete in the grueling showroom stock endurance races both with I.M.S.A. and S.C.C.A. Six to 24 hours of non stop racing in Bill Cook's Porsche 944.

Ed Geiser, our service and racing director, performs too. With a team of factory-trained master technicians dedicated to maintaining your Porsche or Audi as long as you own it. Our master technicians receive the best training both with the factory and at the race track. Our award winning parts team, led by Steve Shepherd, performs to make sure that the parts you need are here when you need them.

At Bill Cook Imported Cars, we know our cars perform, and we expect the same of ourselves.



"NOBODY EVEN COMES CLOSE"



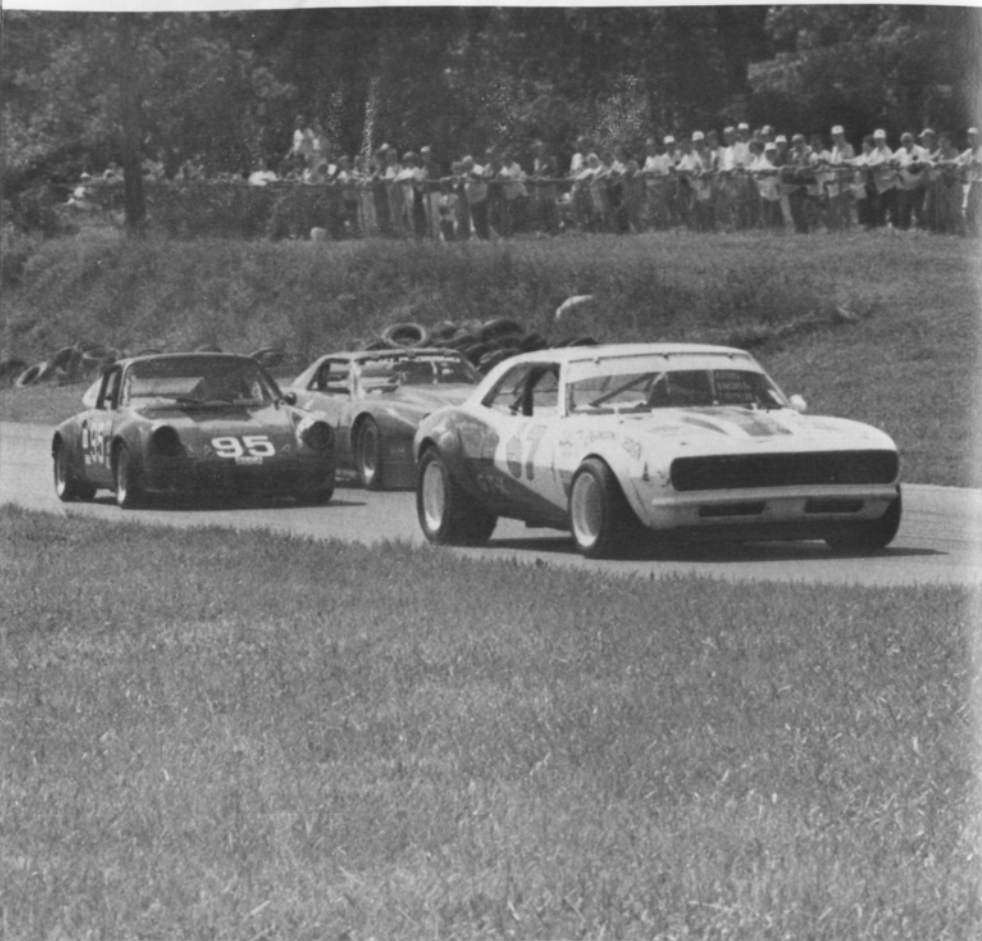
BILL COOK
IMPORTED CARS, INC.

37901 GRAND RIVER AVE.
FARMINGTON HILLS, MI 48024

471-0044

Sales & Leasing

WATERFORD DIGEST



AL BIZER

CADILLAC OVERALL SUPPLY CO.

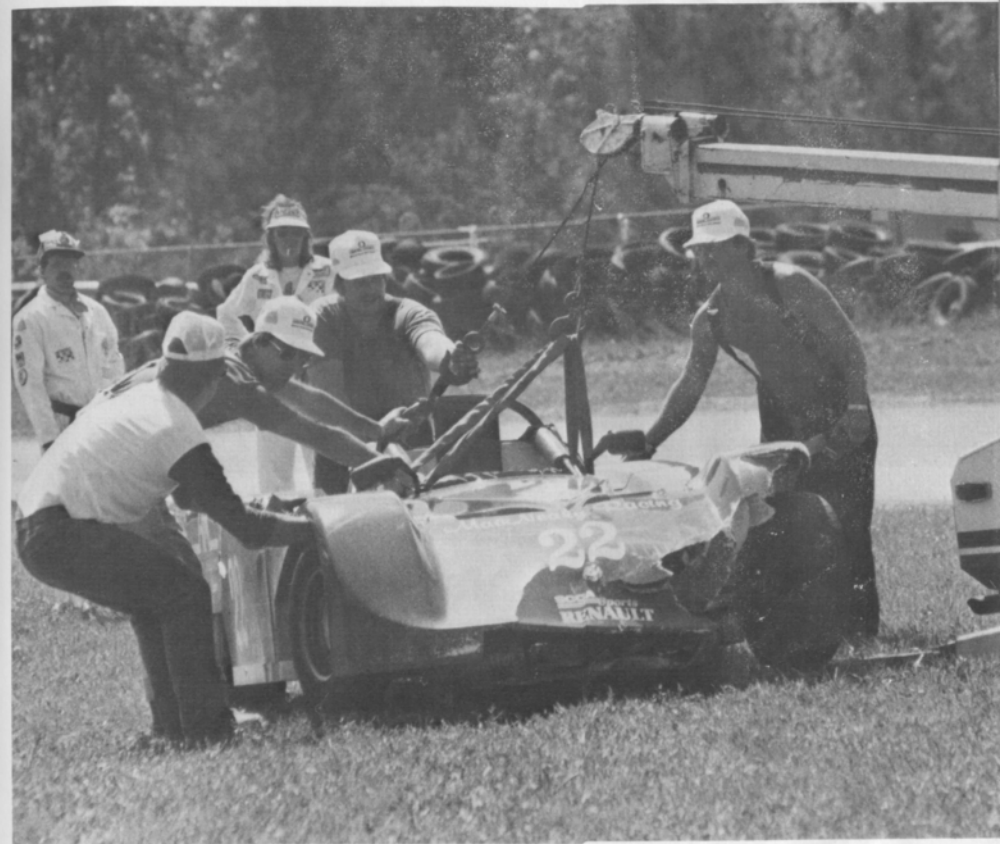
RENTAL UNIFORMS - SHOP TOWELS
DUST CONTROL - ENTRANCE MATS

PHONE (313) 366-7700

TONY KUNERT
SALES REPRESENTATIVE

6401 E. DAVISON
DETROIT, MICH.

WATERFORD DIGEST



DON CASTLE

WILLIAM A. KIEFER
President

SCOTT W. KIEFER
Vice-President

Micro Gauge, Inc.

CNC Machining
O.D. Grinding
Precision Honing

(517) 546-7036

5910 E. Grand River
Howell, MI 48843

WATERFORD DIGEST

PHOTOS BY DON CASTLE



WATERFORD DIGEST

BILL Cook mazda

37911 Grand River at 10 Mile Rd.
Farmington Hills, MI 471-0800

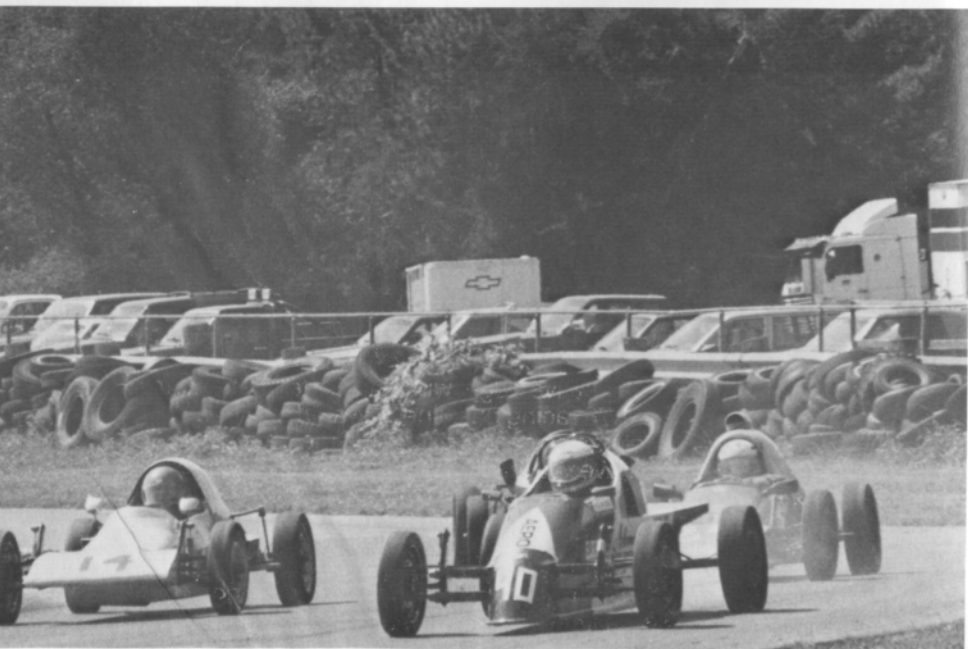
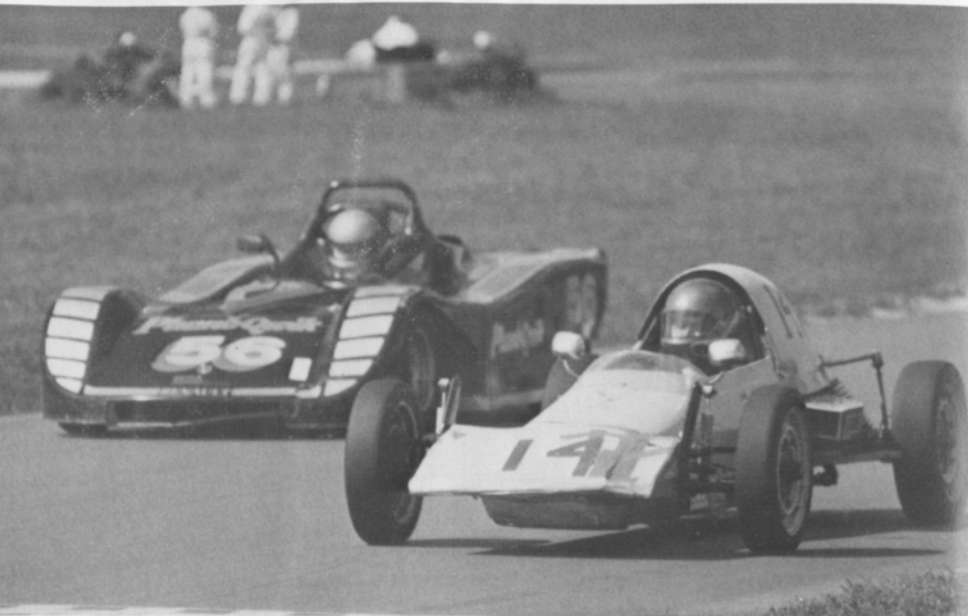


BILL Cook mazda

"Where Excellence is the Standard, Not the Option"

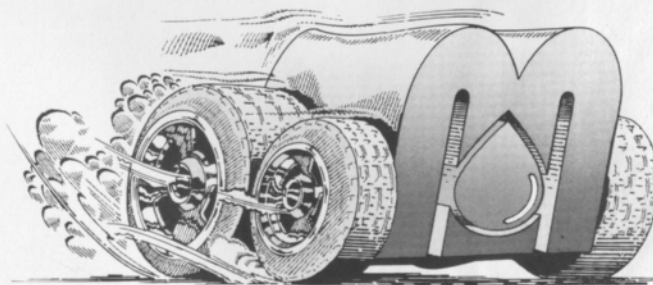
WATERFORD DIGEST

PHOTOS BY DON CASTLE



WATERFORD DIGEST

DON CASTLE



See you in the winner's circle!

Give your car the competitive edge, with Mid-States Petroleum, the official supplier of Union 76 racing gasoline at Waterford Hills. We also carry CAM-2 and Howell racing gasolines, racing methanol, motor oils, and lubricants, that will have you leading the pack. Call Mid-States today and get the edge!



Mid-States Petroleum, Inc.
P.O. Box 186 • Troy, Michigan 48099
In Michigan, call 1-800-482-2611
For rest of USA, call 1-800-554-0500

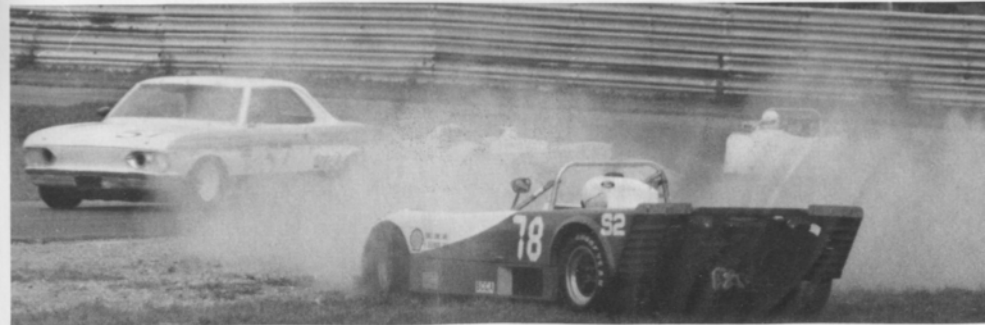
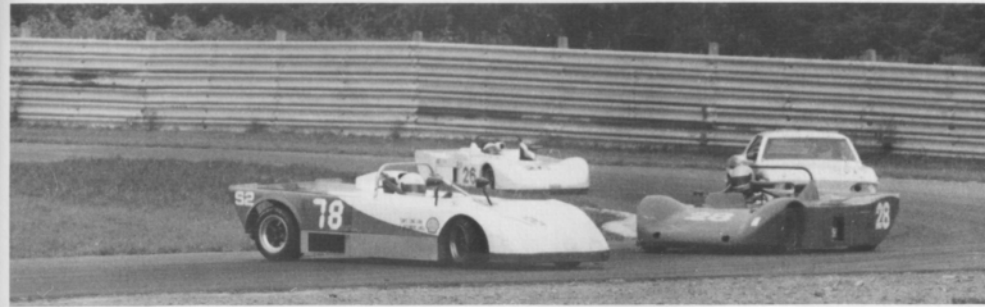
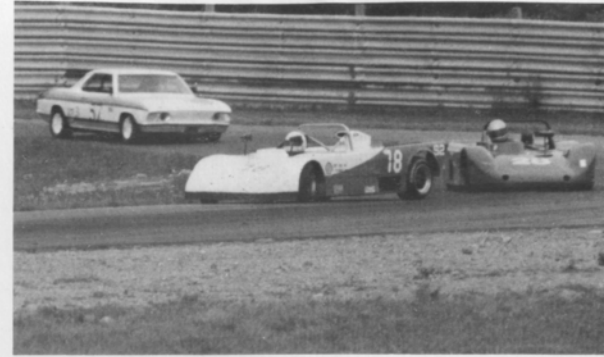
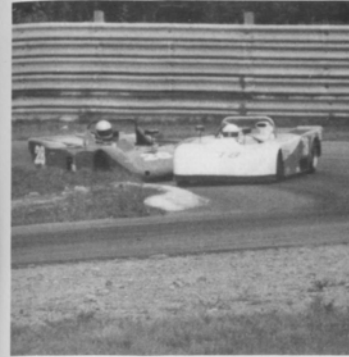
WATERFORD DIGEST

PHOTOS BY DON CASTLE



WATERFORD DIGEST

PHOTOS BY AL BIZER



WATERFORD DIGEST

DON CASTLE



WATERFORD DIGEST

AL BIZER



DON CASTLE



WATERFORD DIGEST

PHOTOS BY AL BIZER



WATERFORD DIGEST

KAMEI • BOGE • LOBRO • LEISTRITZ • BILSTEIN • HELLA • BOSCH • RONAL



IMPORT SERVICE & PARTS

DRIVING SHOULD BE FUN!

So you love hot cars? We do too. We're Motorheads. We sell Bilstein, Hella, Neuspeed, BBS, Ronal; if it makes the car more fun to drive, we're into it. We also offer expert service and installation.

Munk's wants to be your source for the best in performance at fair prices. Call us, or stop by, and we'll show you just how much fun driving can be.

Dedicated to doing it right for over 15 years!

3080 W. Huron (M-59)
Waterford Township
681-8081

1803 Orchard Lake Rd.
Bloomfield Township
335-5424

KAMEI • BOGE • LOBRO • LEISTRITZ • BILSTEIN • HELLA • BOSCH • RONAL



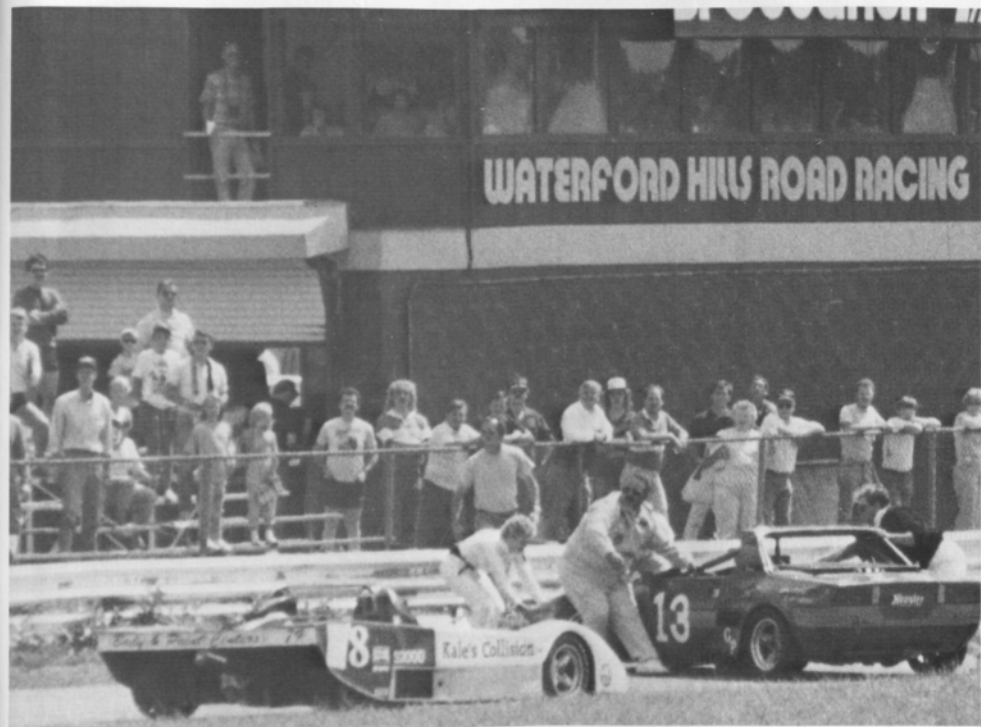
WATERFORD DIGEST

PHOTOS BY DON CASTLE



WATERFORD DIGEST

PHOTOS BY DON CASTLE



BFGOODRICH **T/A** RADIALS TAKE ON THE ROAD™

COMP **T/A**

The Ultimate
High-Performance Tire

EURO RADIAL **T/A**

The Optimal Blend of Handling,
Treadwear, Quality and Style

RADIAL **T/A**

The New Generation of
the Original Race-Winning
Street Radial



CHOOSE THE RIGHT T/A® RADIAL

	HANDLING	WET & DRY TRACTION	TREADWEAR	RIDE	SPEED RATING	SIDEWALL
COMP T/A The Ultimate High-Performance Tire	EXCELLENT	VERY GOOD	GOOD	GOOD	V OVER 130 MPH	RBL*
EURO RADIAL T/A The Optimal Blend of Handling, Treadwear, Quality and Style	VERY GOOD	EXCELLENT	VERY GOOD	EXCELLENT	H UP TO 130 MPH	RWL RBL*
RADIAL T/A The New Generation of the Original Race-Winning Street Radial	VERY GOOD	EXCELLENT	EXCELLENT	EXCELLENT	S UP TO 112 MPH	RWL RBL*

GOOD VERY GOOD EXCELLENT

*RWL: Raised White Letters
*RBL: Raised Black Letters

BFGoodrich

Crankshaft Craftsmen Inc.



CRANKSHAFT GRINDING
CAMSHAFT GRINDING
CRANKSHAFT WELDING
POLISHING STRAIGHTENING
HIGH PERFORMANCE WORK
BEARINGS AVAILABLE

QUALITY BEFORE QUANTITY

RUSS TAYLOR - PRESIDENT

(366-0140)

2957 JEROME • EAST OF I-75 • DETROIT

THINK WINK

CARS & TRUCKS



Satisfying Car Buyers For Over 42 Years

BILL WINK CHEVROLET
10700 FORD RD., BET. WYOMING & SCHAEFER
DEARBORN, MICHIGAN



582-5400

"KEEP THAT GREAT GM FEELING WITH GENUINE GM PARTS"



AUTOMETRIC BODY SHOPS

American .. Import



818 N. Main
Royal Oak, MI
398-0200

490 S. Telegraph
Pontiac, MI 48053
332-0600

8645 E. 10 Mile
Centerline, MI
757-7491

24465 Gratiot
East Detroit, MI
774-3455



689-4940

COMPLETE REPAIR SERVICE

PIRELLI & MICHELIN TIRES

OFFICIAL AET TEST
AET TEST FREE WITH
NORMAL MAINTENANCE
SERVICE

- MERCEDES BENZ
- PORSCHE
- VOLKSWAGEN
- AUDI
- B-M-W

1725 E. MAPLE RD (15 MILE) TROY
1 BLOCK EAST OF I-75



FOREIGN AUTOMOTIVE SUPPLY, LTD.



Known for our **LOW, LOW PRICES**
OEM QUALITY PARTS • LARGE INVENTORY • REPAIR MANUALS
HIGH PERFORMANCE LIGHTS • BOSCH • UPS DAILY

Hours to serve you:
Weekdays: 8:30-7:30
Saturdays: 9:00-5:00
SUNDAYS: 11:00-3:00

380 West 11 Mile
Madison Heights

11 Mile

I-696

John R.

QUESTIONS? **542-6150**



WATERFORD DIGEST

PHOTOS BY DON CASTLE



WATERFORD DIGEST

LOOKING back

with Bizer

*Old friends
I met again
this summer*

*Bill
Clawson
Sept.
1960*



*Scotty
Addison
Sept.
1966*

*Walt
Wollety
June
1964*



Beck's-ULTRA HIGH PERFORMANCE

7000 SCHAEFER ■ DEARBORN ■ MICH. 48126
 (313) 846-2600
 (800) 482-9381 (Mich. toll free)

TIRES

GOODYEAR

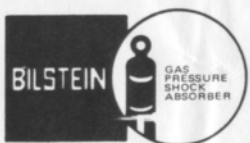
BF Goodrich

YOKOHAMA

PIRELLI

BF Goodrich
RACE TIRE PROGRAM

SHOCKS



10% DISCOUNT TO TACA MEMBERS
 MAJOR CREDIT CARDS ACCEPTED

WHEELS

BBS®

GOTTA

wed's
TURBO WHEELS

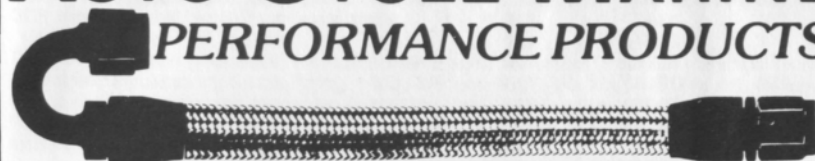
ENKEI

centra CENTRA®

Epsilon
ROAD WHEELS



AUTO-CYCLE-MARINE PERFORMANCE PRODUCTS



"THE LARGEST INVENTORY IN THE MIDWEST"
 HOSE ★ FITTINGS ★ ADAPTERS

(313) 280-1171

4940 Delemere, Royal Oak, MI 48073

Peter Betrus, Jr.

Catalog \$2



Thomas J. Betrus

Hoosier®

RACING TIRES

JAMALC RACING

(517) 223-8704

John
Morris

Al
Ciaramitaro

Average Lap Speed

Min/Sec	MPH	Min/Sec	MPH	Min/Sec	MPH
1:00	85.326	1:15	68.261	1:30	56.884
1:01	83.927	1:16	67.363	1:31	56.259
1:02	82.574	1:17	66.488	1:32	55.647
1:03	81.263	1:18	65.635	1:33	55.041
1:04	79.993	1:19	64.805	1:34	54.463
1:05	78.762	1:20	63.995	1:35	53.890
1:06	77.569	1:21	63.204	1:36	53.329
1:07	76.411	1:22	62.434	1:37	52.779
1:08	75.288	1:23	61.681	1:38	52.240
1:09	74.197	1:24	60.947	1:39	51.713
1:10	73.137	1:25	60.230	1:40	51.196
1:11	72.106	1:26	59.530	1:41	50.689
1:12	71.105	1:27	58.846	1:42	50.192
1:13	70.131	1:28	58.176	1:43	49.704
1:14	69.183	1:29	57.523	1:44	49.227

The Waterford Hills Road Course is 1.4221 miles long (7,509 ft. center line of track). To determine the speed of any individual car, time it for one complete lap and read off the speed from this table.

Class Records

CLASS	DRIVER	CAR	DATE	LAP TIME
FA	ANDY FALBO	MARCH	8/83	1:06.10
FC	JAY NOVAK		9/84	1:09.30
FF	VINCE MUZZIN	ROYALE	6/78	1:09.40
CFF	DON KITCH	CROSSLE	7/87	1:12.30
FFR	MARK DAVIDSON	CROSSLE 32	5/84	1:17.00
F4	STUART LAMONT	XPIT	7/83	1:12.50
FV	LEE MCLEOD	LYNX	7/81	1:15.70
F440	LARRY DUPUIS	NOVAKAR	9/87	1:14.60
ASR	ED MURRAY	CHEVRON	9/81	1:10.90
CSR	CRAIG BENNETT	FALT	7/88	1:09.90
DSR	ED MURRAY	JEDDI	9/85	1:12.80
S2	LARRY CAMPBELL	LOLA	9/79	1:11.50
SREN	MIKE NEAL	SPT RENAULT	7/88	1:20.20
EP	LOU LIVENGOOD	PORSCHE 356	6/80	1:16.30
FP	BARRY HARTZEL	MG MIDGET	7/78	1:16.20
GP	KIRK CARLSON	MG MIDGET	8/81	1:17.00
HP	PAUL CAMERON	SPRITE	7/78	1:20.40
GT1	DON SAK	CORVETTE	5/86	1:13.20
GT2	R. A. ALBO	FIERO	5/88	1:29.29
GT3	CRAIG ALLEN	LOTUS ELAN	9/83	1:16.40
GT4	JERRY MORLEWSKI	FIAT 124	9/85	1:18.70
GT5	TED WOLLESEN	MINI COOPER	9/85	1:19.20
ITS	JOHN HEENEY	DATSUN 280Z	8/87	1:24.70
ITA	GREG MANKIN	MAZDA RX2	9/87	1:27.70
ITB	MIKE JONES	MUSTANG	7/88	1:25.80
ITC	CAL CORTRIGHT	FIESTA	7/88	1:27.70
RCUP	CHUCK LITTLE	RENAULT ENCORE	7/85	1:29.20
SSGT	BOBBY FEHAN	CORVETTE	8/86	1:21.60
SSA	SCOTT MCNEIL	DODGE SHELBY	7/87	1:26.00
SSB	MIKE MIEMAR	DODGE SHELBY	7/88	1:26.60
SSC	RAY KROM	VW-GTI	7/88	1:26.60

Racing Classes

To insure fairness in competition, all road racing cars are grouped into racing classes by the Sports Car Club of America in its General Competition Rulebook (GCR). Waterford Hills Road Racing observes the GCR regulations with some minor exceptions.

The five Competition groups are: Production (sport cars), Showroom Stock (GT cars and sports cars with minimal modification), Sports Racing (Highly modified engine and body over wheels), GT (enclosed cockpit passenger cars and former big production cars), and Formula (open wheels single cockpit). Racing groups are subdivided into classes of equally competitive cars based upon engine size and handling characteristics.

The cars listed below are representative of their racing classes and include most of those you will see at Waterford Hills.

PRODUCTION

EP	Porsche 356 series, MGB, Opel GT, Porsche 914/4, Triumph TR-4
FP	Saab Sonnet, MG Midget Mk III & IV, Lotus 7, Triumph Spitfire Mk III & IV & 1500
GP	MG Midget Mk I & II, Triumph Spitfire Mk I & II, MGA, Austin Healy Sprite, Fiat X1/9, Fiat 124 Spider, Alfa Romeo, Porsche Coupe
HP	Austin Healy Sprite Mk I & II, Fiat 850, MG Midget 948, Fiat Abarth

SHOWROOM STOCK

SS-GT	New class with current model cars of SSA plus additional modifications allowed
SSA	Mustang Cobra, Mazda RX series, Porsche 924, Capri V-6, Datsun 280Z
SSB	Triumph TR-8, Scirocco, Dodge Colt, Datsun 200SX, Fiat 124
SSC	Fiat X1/9, Pinto, VW Rabbit, Renault LeCar, Mustang 2.3, MGB, Honda Civic, Toyota Corolla, Pontiac Astre

SPORTS RACING

ASR	over 1300 cc but less than 6000 cc
CSR	over 850 cc up to 1600 cc (with restrictions)
DSR	below or equal to 850 cc
S/2000	uses Ford 2000 cc overhead cam engines only

GT CLASSES

GT-1	Corvette, Camaro, Ford Cobra II, Shelby GT-350, Porsche 911 SC, Dodge Aspen
GT-2	Datsun Z series, Mazda RX7, Porsche 914/6 & 924 Turbo, Sunbeam Tiger, Triumph TR-6 & TR-8
GT-3	Opel 1900, Datsun 510 1800, Mustang 2300, Pinto 2000 & 2300, Cosworth Vega
GT-4	Fiat 124 Sports Coupe, Pinto 1600, Toyota Celica, Dodge Colt, Toyota Corolla 1600, Renault LeCar, Datsun 510 1600, Ford Escort/Lynx, VW Rabbit & Scirocco
GT-5	Datsun 200SX, Austin/Morris Mini Cooper, VW 1300, NSU TT, Honda Civic, Fiat 124 1200, Toyota Corolla 1200

FORMULA

FF	Formula Ford — Cortina or Pinto 1600 cc engine, strict weight to engine ratio with driver's weight included in total legal weight, very equal class
FFR	Formula Ford Radial — the cars are the same as the above class except they must use BF goodrich T/A radial tires
FV	Formula Vee — all Volkswagen components, 1200 cc engine, driver's weight included in total legal weight, very competitive class
F/ATLC	Formula Atlantic — choice of engines in over 1100 cc up to 16000 cc range, wings and other modifications allowed, not meant to be an inexpensive race car
F/CNTL	Formula Continental — engine up to 1100 cc, rear wings allowed, combines the modifications of the previous Formula C and Formula Super Vee classes
F440	Formula 440 — utilizes Fuji two-cycle snowmobile engines and drive train, rigid suspension, wings permitted
F4	Formula Four — Canadian class, motorcycle engine power plant, engine size determines weight and transmission allowed

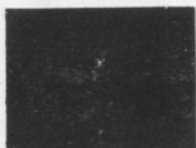
Flags

yellow with red stripes



Take care, oil has been spilled or a slippery condition exists somewhere in your vicinity. Look at the track surface.

black



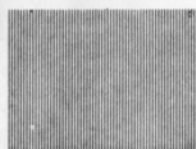
Sloppy or dangerous driving. Complete the lap you are on, stop at the Start/Finish line for consultation with Chief Steward. Waving Black Flag (displayed on all corner stations) means the race is stopped. Slow down immediately and proceed around the track with extreme caution to the pit lane for a re-start.

black with orange ball



(Meatball Black Flag) There is something mechanically wrong with your car. Proceed to your pits at reduced speed.

green



(Or no flag) Course is clear.

yellow



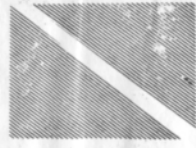
(Stationary) Take care, danger, no passing.
(Waving) Great danger, be prepared to stop, no passing.

red



Waving red (displayed by the Starter only) means the race is stopped, slow down immediately and proceed around the track with extreme caution to the pit lane.

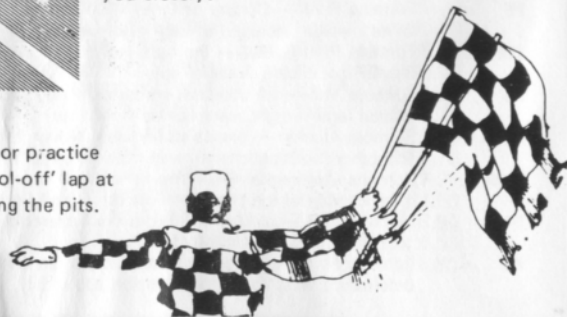
blue with diagonal yellow stripes



(Motionless) Another competitor is following you closely.

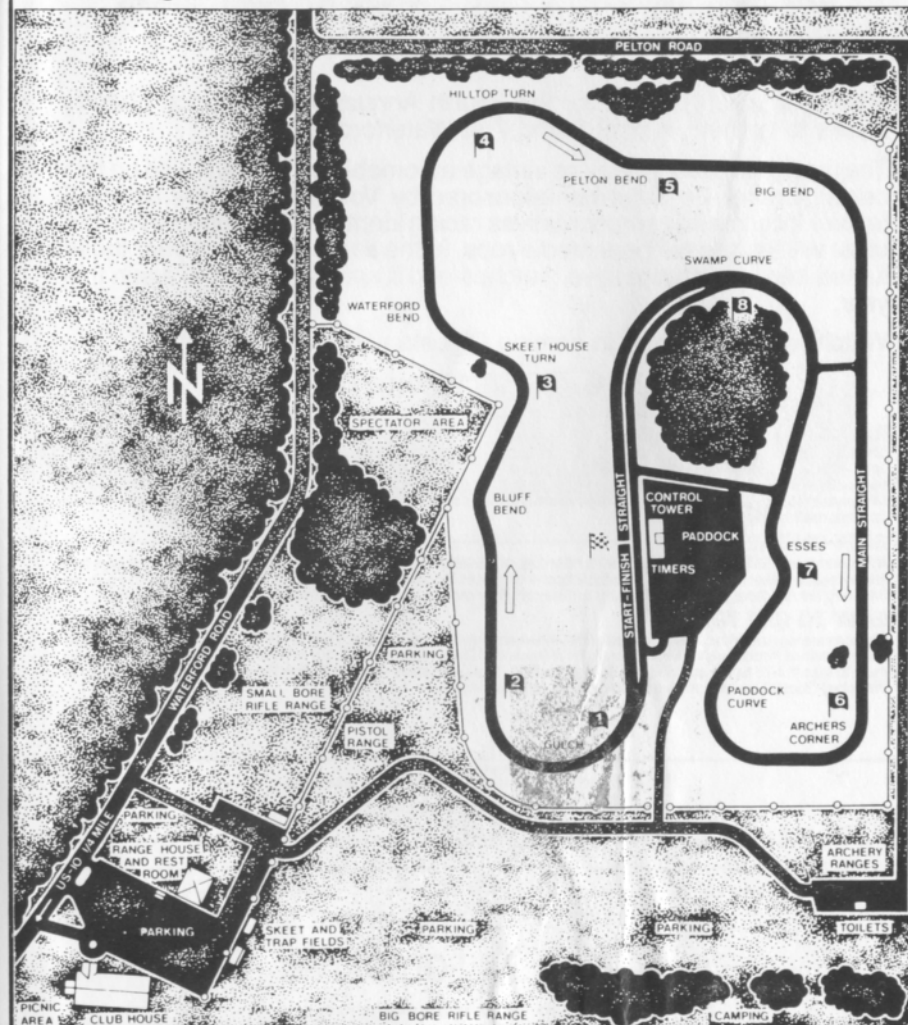
checkered

You have finished the race (or practice session). Complete one "cool-off" lap at reduced speed before entering the pits.



Waterford Hills Course Map

a 1.5 mile asphalt road course at waterford, michigan



WATERFORD DIGEST

Waterford Hills 1988 Road Racing Calendar Schedule

Race 1	May 28-29	Race 4	July 30-31
Race 2	June 25-26	Race 5	Aug. 27-28
Race 3	July 9-10	Race 6	Sept. 24-25

Mark your calendar now for the Fourth Annual Meadowbrook Historic Races to be held August 6 and 7 at Waterford Hills.

The races will not only feature vintage automobiles, there will also be two celebrity races on Saturday sponsored by Volkswagen. One race will feature local media representatives racing identically equipped VWs, the other will feature national media reps. in the same cars. Last year these turned into very competitive matches and it appears they will again this year.

Watch for more details in coming Digests and plan to be there.

Vintage Race Aug. 6-7

RACING RAIN OR SHINE

The hills of Waterford are being invaded . . . with an army of sports cars, sedans and formula cars in fierce, wheel to wheel competition . . . and for 1988 we've assembled the largest field in our 30 year history! Watch over 130 top drivers battle it out in the finest racing machinery from America and Europe. Corvette, Porsche, Datsun. Everything from Capris to Camaros, McLarens to MG's. All together, fighting it out on a mile-and-a-half track with 13 right and left turns that twist up and down hills like no other road course in the U.S.A.

EASY ON THE WALLET

Admission is just \$3.00 for Saturday, \$5.00 for Sunday, or \$6.00 for the entire weekend. Children under 12 are always free and a Season Ticket is only \$20.00. The track opens at 10 a.m. for practice and qualifying. Racing begins at 1:30 p.m. on Saturday (seven races) and at 11:30 a.m. on Sunday (ten races). For more information phone (313) 623-0444.

EASY TO GET TO

Chances are you live within a few minutes of the Midwest's premier road course. The W.H.R.R.I. Race Track is located just 6 miles north of Pontiac on Waterford Road, 1/4 mile each of Dixie Highway (U.S. 10) in Waterford, Michigan. The easiest route to take is I-75 to the southbound Sashabaw Exit. Take Sashabaw south to Pelton Road, then take Pelton west to Waterford Road. The total distance after exiting the expressway is 2-1/2 miles.

New, Used reproduction Parts and Accessories
Custom Paint and Body Repair

BOJAX

HiTech Automotive

design and fabrication

DOUG FEHAN
BOB FEHAN
313/549-5410

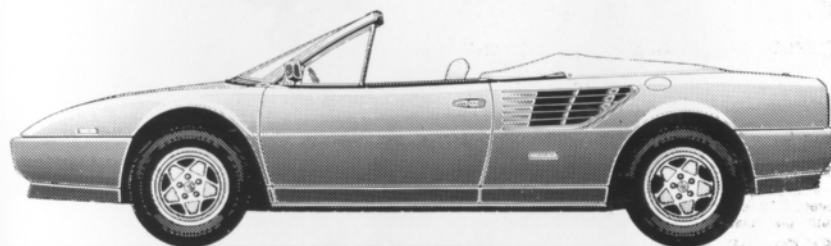
4712 Fernlee
1st Block East of Coolidge, S. of 14
Royal Oak, Michigan 48073

THE WATERFORD DIGEST

Published by Waterford Hills Racing Inc., 1988

Now...3.2 Mondial Cabriolet

A Ferrari is an investment: in pride, in excellence, in achievement. Protect your investment by purchasing and maintaining your Ferrari through your authorized dealer. Only your authorized Ferrari dealer can provide full factory warranty, service and parts.



The Sports Car Exchange

MICHIGAN'S EXCLUSIVE AUTHORIZED AGENT FOR
FERRARI

14510 MICHIGAN AVE. DEARBORN, MICHIGAN 313-581-6222