



**A.**

**B.**

**A. Mens/Ladies 50% Cotton  
50% Poly T-Shirts  
Large Jaguar Logo. \$10.95  
Colors: Grey, Black, Red,  
Lt. Blue, Beige, Wine  
Sizes: S, M, L, XL**

**B. Mens/Ladies 50% Cotton  
50% Poly T-Shirts  
Small Jaguar Logo. \$10.95  
Colors: Grey, Black, Red,  
Lt. Blue, Beige, Wine  
Sizes: S, M, L, XL**

**A. Sport Cap — Jaguar  
Logo. \$18.95  
Colors: Red, Black,  
White, Lt. Blue, Tan  
Sizes: Small/Medium,  
Large/X-Large**

**B. Visor — Jaguar  
Logo. \$9.95  
Colors: Black, White  
One Size Fits All**

**C. Baseball Hat Jaguar  
Logo. \$8.95  
Colors: Black and  
White/Green  
One Size Fits All**



**A.**

**B.**

**C.**

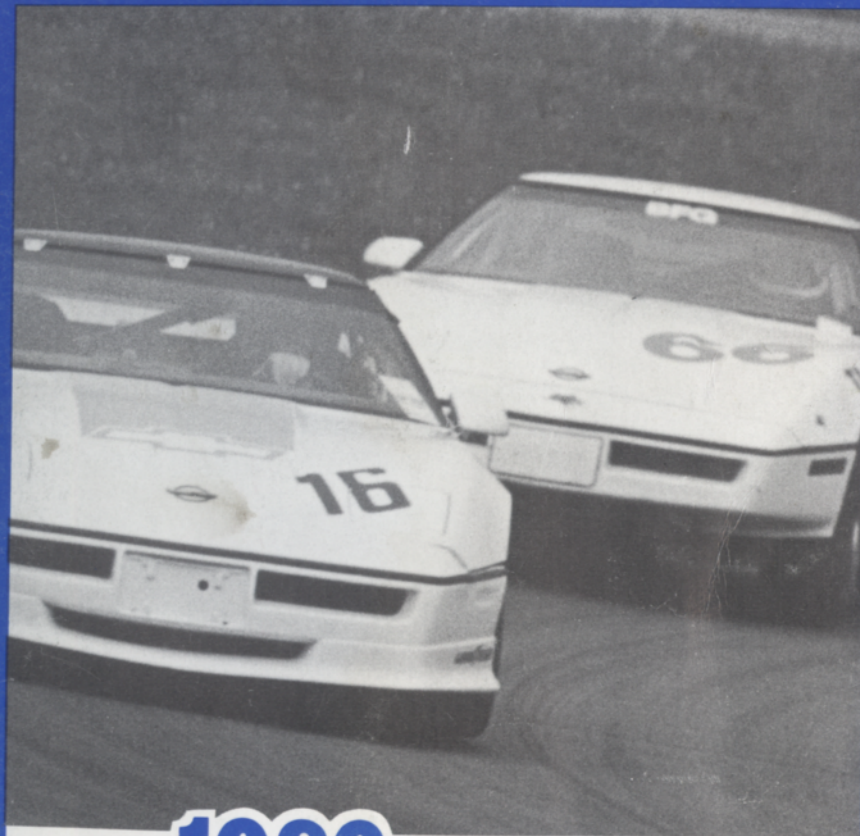


**TROY MOTOR MALL  
1815 MAPLELAWN • TROY, MI 48084  
(313) 643-6900 1-800-8-FALVEY**

# WATERFORD HILLS

## ROAD RACING

oakland county sportsmen's club



# 1989 WATERFORD DIGEST

SEPTEMBER  
\$2.00





TA TOYOTA

TOYOTA TOYO



## The Inside Lin

Welcome to Waterford Hills Road Racing's September Race Week-end. The Fall Classics. Last One of the Season. THE weekend. ARMAGEDDON!! There are several interpretatons of just what this weekend is all about. They range from the flat cloth cap traditionl to the Ekonomakian hyperbolic. And as is the case in most things, there is some basis in fact for each of these views.

The crisp air, green grass and, perhaps, a touch of color in the trees, evoke a sense of the classical American sports car scene of days gone by. The nature of our racing program is certainly consistent with that image in many ways. The Fall Classics. O.K. No problem... at least for those old enough to remember.

THE Weekend? Well, for those in contention for as yet undecided class championships or overall Top Ten placings, this certainly is THE one. The races you see this weekend are their last chances to fatten the point totals and either cement and existing lead or to establish one. You can bet that none of these worthies will miss a grid call for anything less than a total system melt-down. THE weekend . . . for some anyway.

ARMAGEDDON? Come on, get serious! Now I'm not going to sit here and deny that there have been some spectacular, er..uh, racing incidents (yeah, that's the ticket!) (EDITOR'S NOTE: See Page 10 — 12) during September weekends past. But anyone who's been in attendance the past few Augusts (not to mention Julys) knows that such events can occur anytime. Armageddon? I don't think so.

Last One of the Season. How  
tion or out, running w  
borly,  
lap until next spring o  
he dust  
you get to watch one. S  
oak it up.  
and tastes (of COURSE the hot dog  
r  
ines club  
racing. Get enough to last a few mor  
w  
e you back  
here next season! In a RACE CAR, e  
n.

So enjoy today, but keep in touch. We expect  
be at Autorama again  
early next year. You'll be able to pick up sche  
es and discount cou-  
pons then. If not then, watch your local pap  
and auto stuff supply  
outlets for information. Thinking about act  
RAGING? Well then,  
you should start attending our club meetin  
the first Wednesday of  
each month, 8:00 PM in the OCSC clubhouse. The company's good  
and the information is FREE!!

Have a safe and healthy off season. Oh, and wear your gloves.

Cal Cortright

## Officials

- President David Shook
- Secretary Peter Quenet
- Vice President Ted Wollesen
- Director of Racing Jim Vollmers
- Race Coordinator Jim Lockwood
- Chief Steward Barb Kitch
- Asst Chiefs Eddie Atkinson & Bernie Fling
- Chief of Flags & Communications Bill Gibbs & Krystal Johnston
- Chief Registrar Carol Humphreys
- Chief of Safety Blackie Meyers
- Chief of Timing & Scoring Suzi Moore
- Chief Starter Hal Goff
- Chief of Tech Lew Cooper
- Licensing Chairman Ray Krom
- Membership Chairman Diane Wollesen
- Trophy Chairman Beth Hinman
- Grid Marshal Emily Whitehead
- Paddock Marshal Paul St. Pierre
- Course Control Blackie Meyers
- Director of Facilities Dave Hinman
- Controller Dan McDonald
- Newsletter Editor Cindy Anthony
- Boutique Ruth Olsen

# THE BMW M3. IT TRANSFORMS AN ENTHUSIAST INTO A FANATIC IN 7.6 SECONDS FLAT.



The new M3 stretches the definition of "street legal" to its outermost limits. It is a bona fide supercar.

Within its taut, aerodynamic skin pulses the pride of BMW's Motorsport racing division. A 192-hp, twin-cam, 16-valve, 4-cylinder street-tuned version of BMW's world champion Formula 1 powerplant. It turns 0-60 in 7.6 seconds, and 143 mph flat out.\*

Even more impressive is its performance in everyday traffic.

Sport gearbox and steering and competition suspension keep you confidently in charge. While leather sport seats keep you comfortably ensconced.

Race in for a test drive. The M3 is no ordinary everyday car. But it could convert you into an everyday fanatic.



**THE ULTIMATE DRIVING MACHINE.™**

© 1987 BMW of North America, Inc. The BMW trademark and logo are registered. \*BMW does not condone exceeding posted speed limits.

## ERHARD BMW

Michigan's Oldest and Largest BMW Dealer  
24130 Telegraph Rd. at 9½ Mile, Southfield

**352-6030**

Open Mon. & Thurs.  
Until 9 P.M.

# WATERFORD DIGEST

OPEN SATURDAYS

NEXT DAY DELIVERY

### IMPORTED CAR PARTS, INC.

**PARTS & ACCESSORIES FOR ALL IMPORTED CARS**

"IMPORTED CARS ARE NOT FOREIGN TO US"

★ BOSCH ELECTRICAL  
★ HAYNES REPAIR MANUALS  
★ WEBER CARBURETION  
★ BODY PARTS  
★ CAR COVERS & MASKS

★ KYB SHOCKS  
★ CIBIE LIGHTS  
★ ANSA EXHAUSTS  
★ COMPLETE ENGINES  
★ CASTROL OIL PRODUCTS

★ REMANUFACTURED ENGINES

(ASK ABOUT THE 12 MONTH/12,000 MILE WARRANTY)

**6 LOCATIONS TO SERVE YOU**

<b>FARMINGTON HILLS</b> <b>477-0410</b> <small>32214 W. 8 MILE ANN ARBOR</small>	<b>WARREN</b> <b>759-0800</b> <small>13456 E. 11 MILE</small>	<b>BERKLEY</b> <b>546-6010</b> <small>3860 W. 12 MILE</small>
<b>ANN ARBORS</b> <b>769-4900</b> <small>1948 W. STADIUM</small>	<div style="border: 2px dashed black; border-radius: 50%; padding: 5px; width: 60px; margin: 0 auto;"> <p style="text-align: center; font-size: x-small;">NEW LOCATION ALLEN PARK <b>383-2500</b> 15390 SOUTHFIELD RD.</p> </div>	<b>BLOOMFIELD HILLS</b> <b>334-6700</b> <small>1717 S. TELEGRAPH</small>

SERVING THE AREA FOR OVER 15 YEARS

- BELL .....helmets, racemark suits
- CARTEL....brake fluid
- FERODO ...brake pads
- FILTRON ... air filters & kits
- FIRESTONE..race tires
- GIRLING -LOCKHEED... master & slave cyl.
- HYLOMAR. sealants
- INDY CAR MIRRORS ... formula & sports-2
- JONES..... tachometers
- KONI ..... shocks
- LIFELINE.. fire systems
- WILLIAMS.. safety harness

**reynard**

**LOLA**

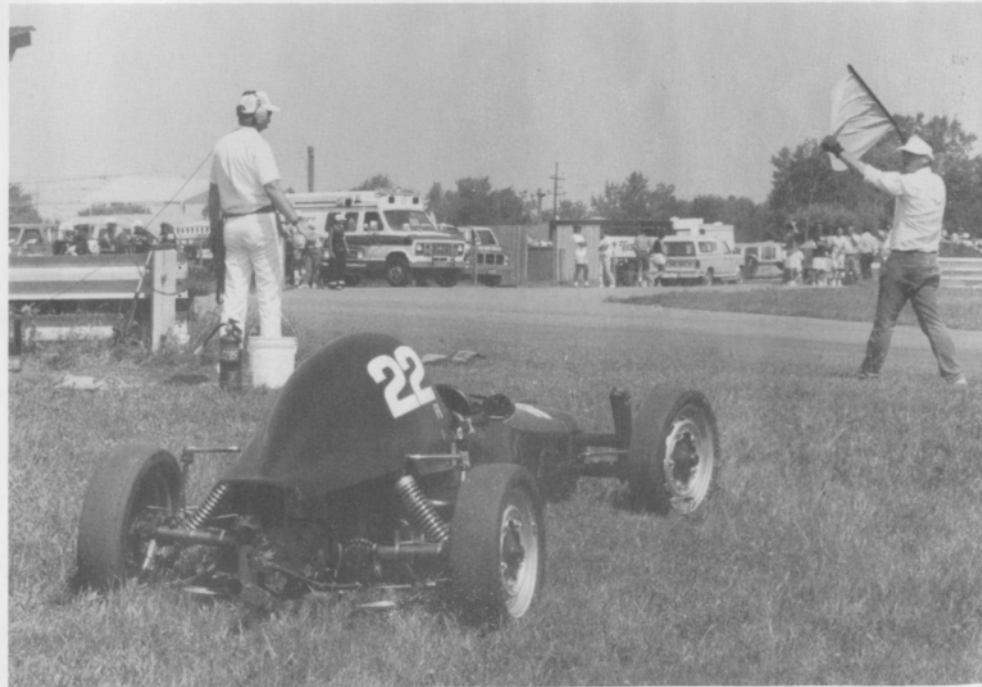
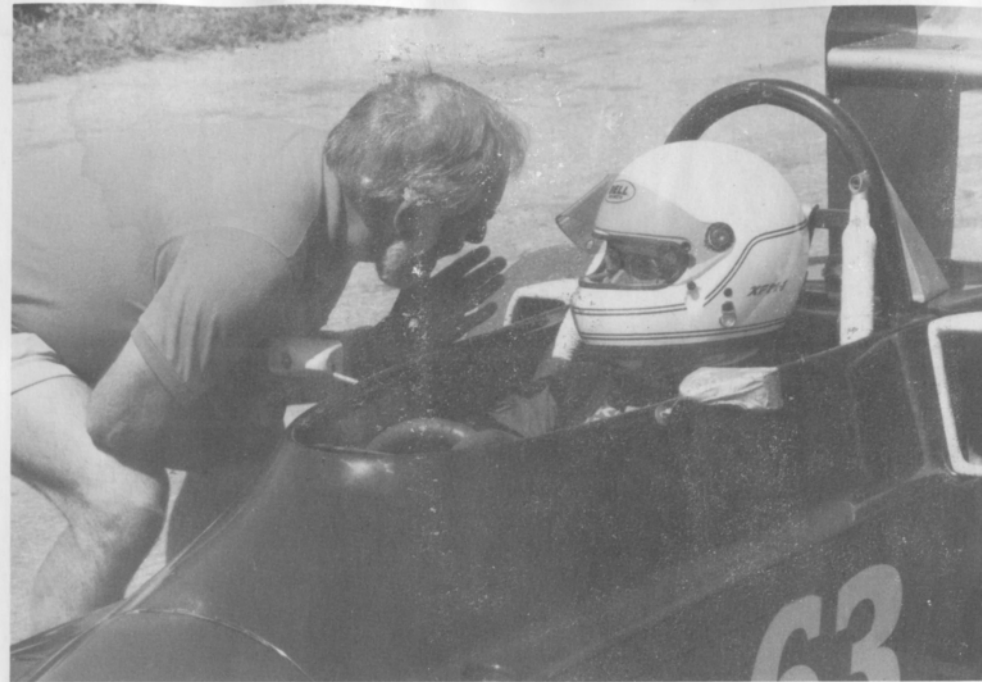
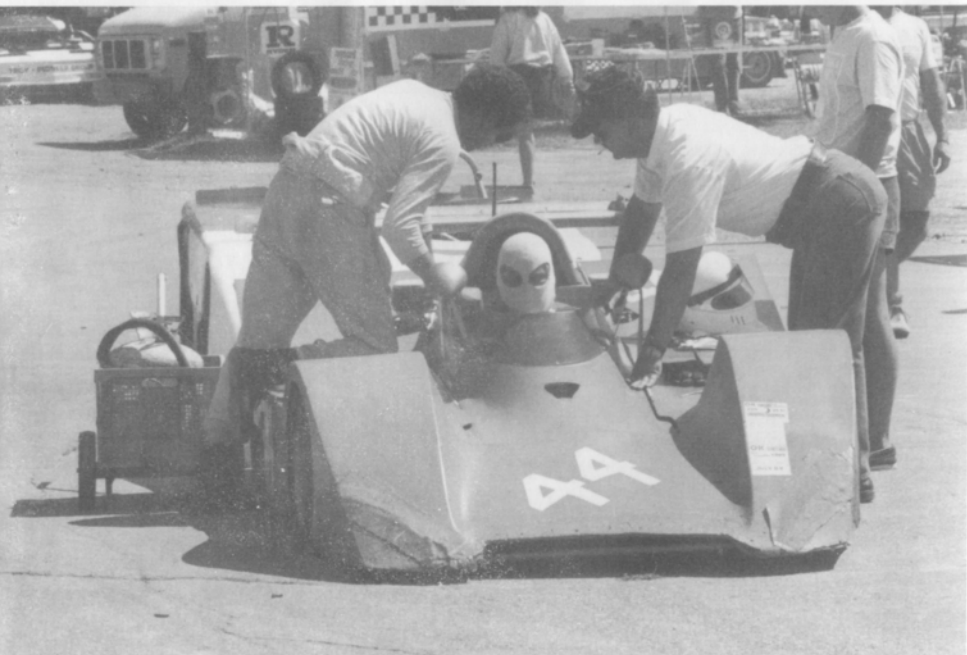
**HEWLAND**

**STUFF**  
averill racing

Hazel Park, Michigan  
**(313) 542-9366**  
FAX (313) 542-3736

- MERIT .....master switch
- MOMO ..... steering wheels
- NMB .....rod ends & bearings
- PANASPORT...one & three piece wheels
- PIT BOARDS..tools, tape, pyrometers
- PULSAR.....racing battery
- QUARTER MASTER ... clutch disc assy.
- REDLINE.... oil & cv grease
- WORTH..... suits & equip.
- SMITH..... gauges
- 1600 FORD PARTS... gaskets, rings, bearings
- CHASSIS REPAIRS - ALIGNMENT, fabrication, welding







"NOBODY EVEN COMES CLOSE"

**BILL COOK**  
IMPORTED CARS INC.



**"WHERE OVERALL CUSTOMER SATISFACTION  
IS OUR PRIMARY GOAL"**

**TO ALL PORSCHE OWNERS**

BRING YOUR PORSCHE INTO OUR SERVICE DEPARTMENT  
AND EXPERIENCE COURTEOUS, FAST, EXPERT SERVICE.

BACKED UP BY:

- The largest parts inventory in the state of Michigan
- Factory trained technicians
- Factory tools
- State-of-the-art diagnostic equipment

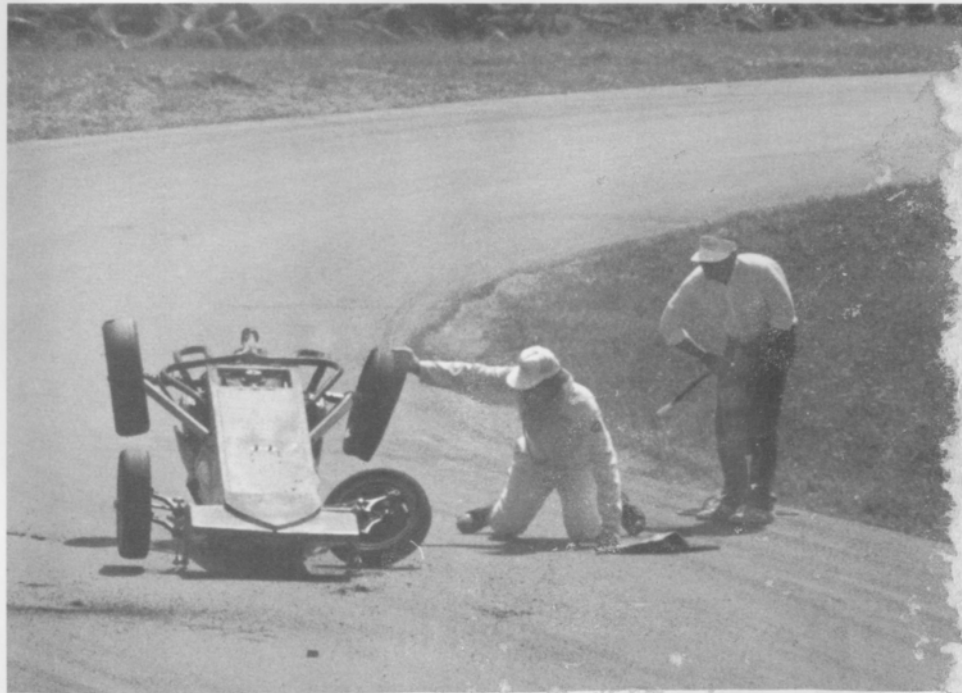
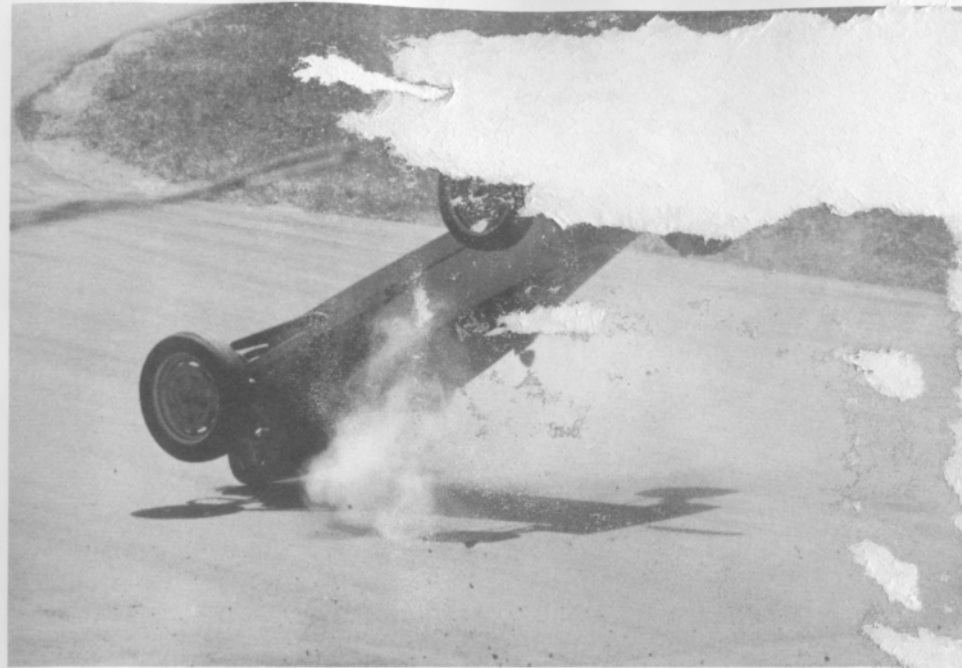
SO WHY NOT LET US SERVICE YOUR PORSCHE NEEDS.  
AND, WHILE YOU'RE HERE, ASK ABOUT OUR PICK UP AND  
DELIVERY SERVICE. YOU MAY ALSO WANT TO BROWSE  
THROUGH OUR BOUTIQUE DISPLAY AND LOOK OVER OUR  
UNIQUE GIFT ITEMS.

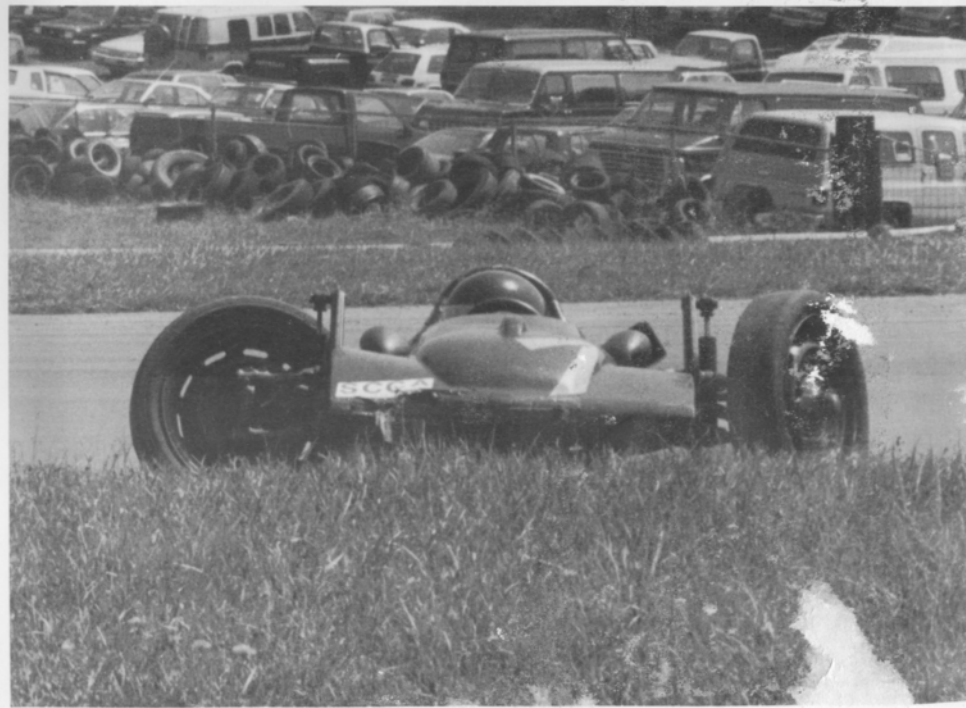
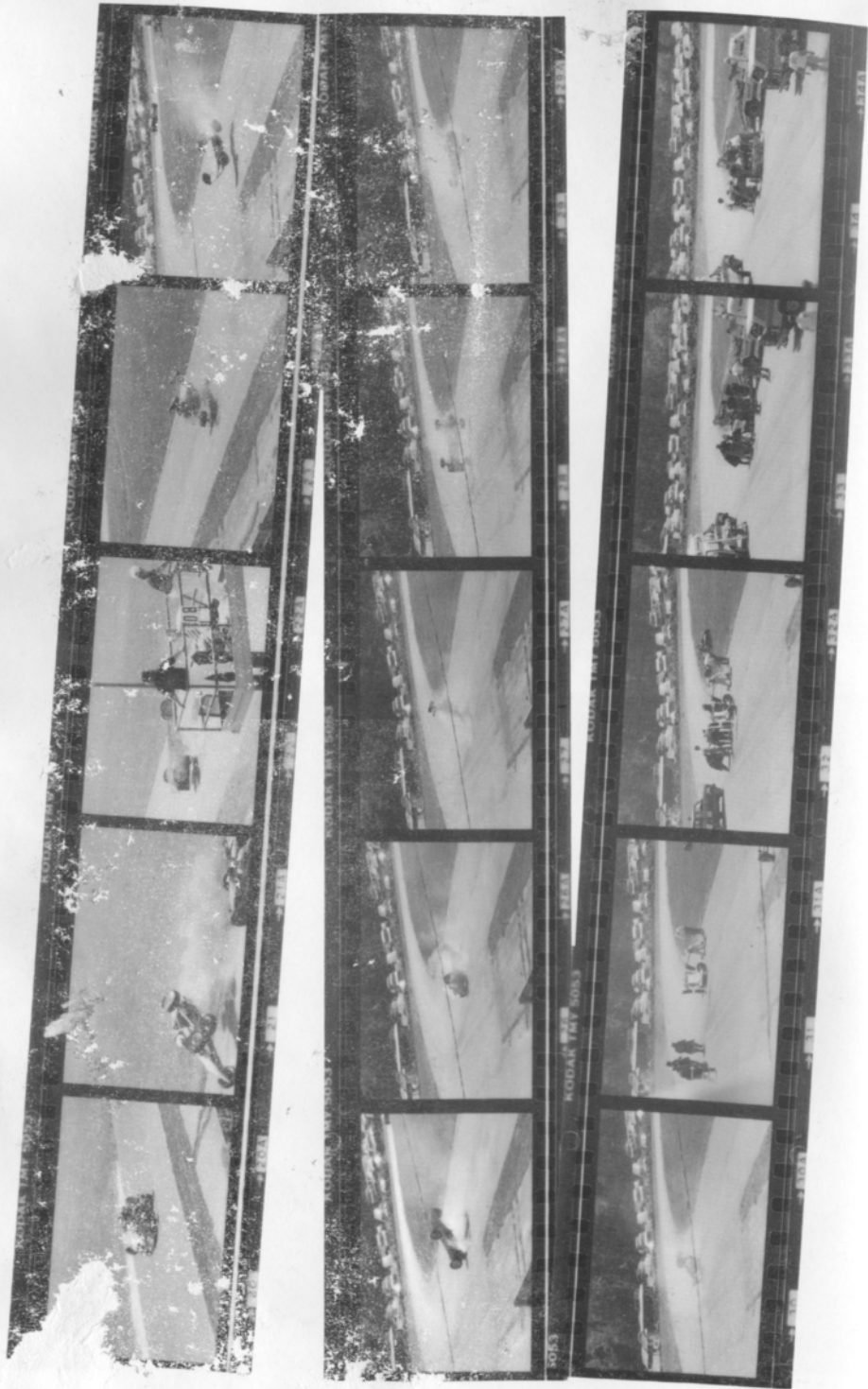
**YOU'VE TRIED THE REST,  
NOW TRY THE BEST.**

37901 Grand River • Farmington Hills, Michigan 48018 • (313) 471-0044  
**Business Hours: Monday - 7:30-9:00 • Tuesday-Friday - 7:30-6:00**

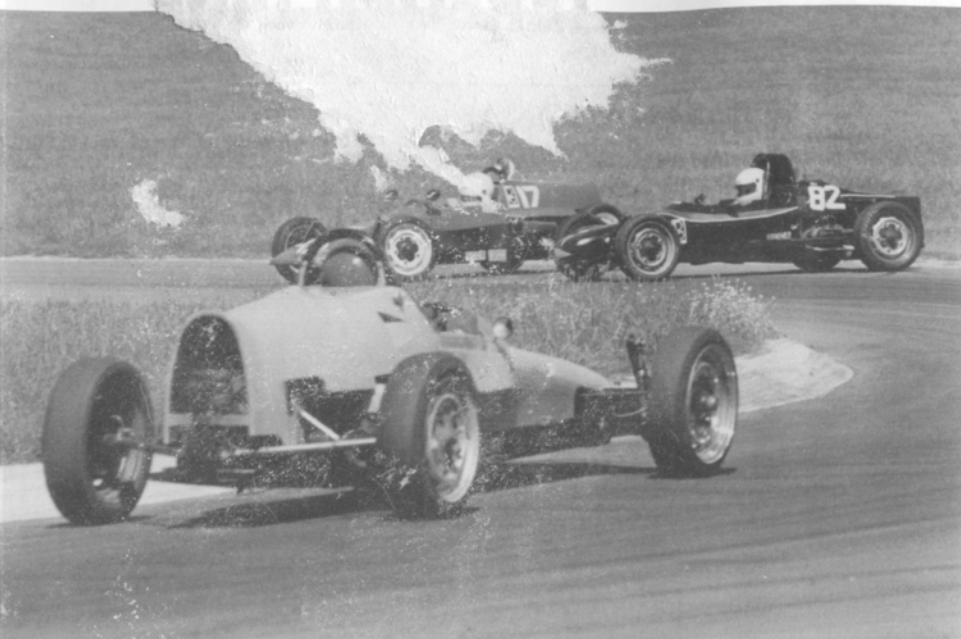
Members SMR, PCA











**INTERNATIONAL  
SPORTS CAR  
CENTER**

*Specialize in the service  
of the finest automobiles*

- Porsche • Ferrari • Lamborghini
- Mercedes • BMW • Jaguar
- Audi • Volvo • Saab • Corvette

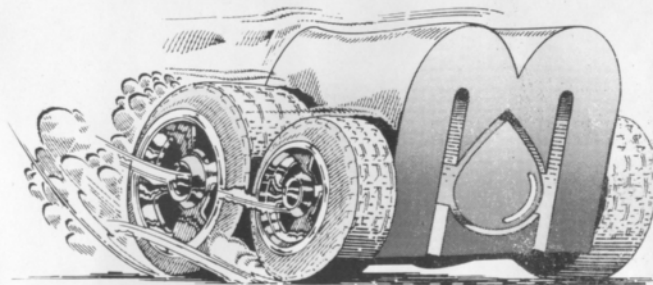
*Services include:*

- Bosch Authorized Service Center
- State-of-the-art maintenance and service equipment
- All certified master technicians
- Brokering of exotic sports cars in spacious showroom
- Parts and accessories
- Phone/Burglar alarm installation
- Flat bed towing/pick-up and delivery available

**Uncompromised Commitment  
To Service Excellence**



24387 Halsted Rd.  
Farmington Hills,  
MI 48331  
1/8 mile north of Grand River  
(313) 473-4100

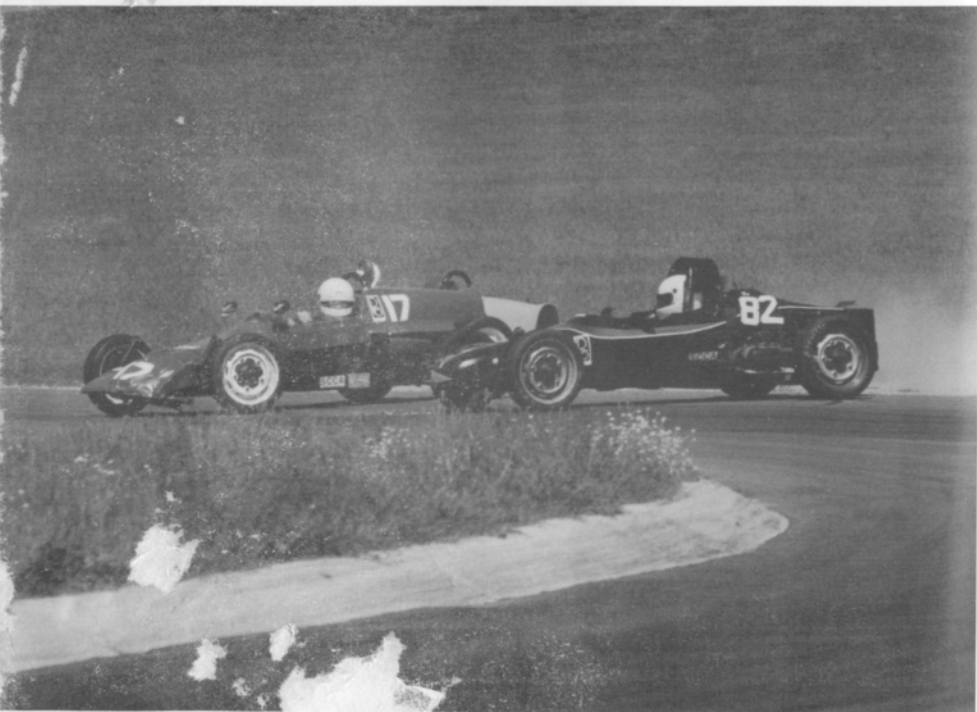
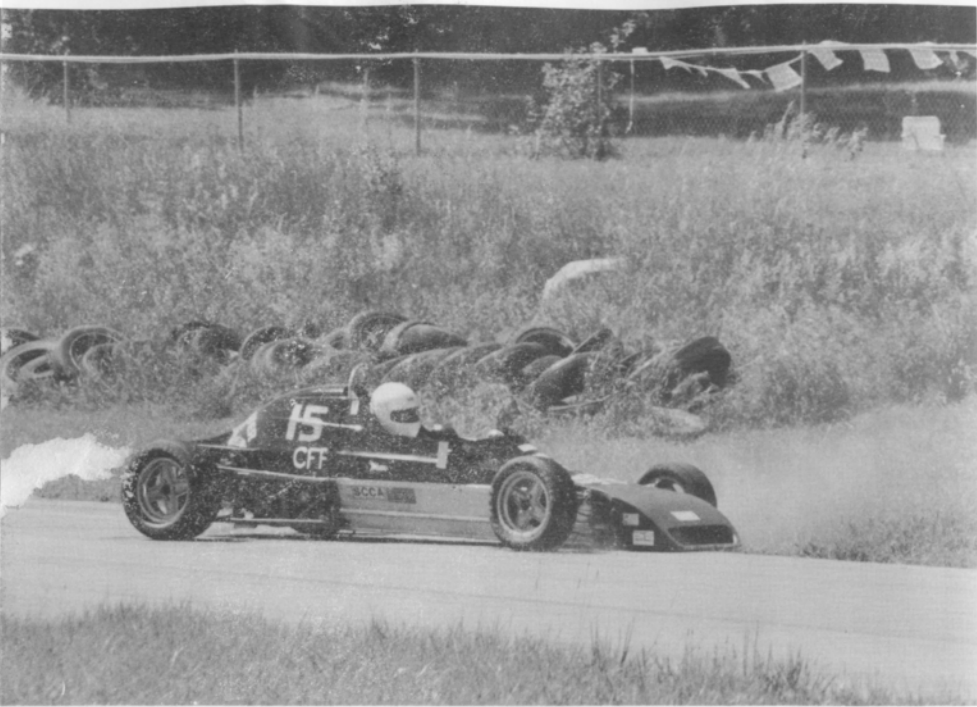


**See you in the winner's circle!**

Give your car the competitive edge, with Mid-States Petroleum, the official supplier of Union 76 racing gasoline at Waterford Hills. We also carry CAM-2 and Howell racing gasolines, racing methanol, motor oils, and lubricants, that will have you leading the pack. Call Mid-States today and get the edge!



**Mid-States Petroleum, Inc.**  
P.O. Box 186 • Troy, Mich.  
In Michigan, call 1-800-  
For rest of USA, call





# BFGOODRICH T/A RADIALS

## COMP T/A

For the world's finest cars...  
from the world's toughest races.

## COMP T/A HR

Weather-beating traction...  
world-beating handling.

## EURO RADIAL T/A

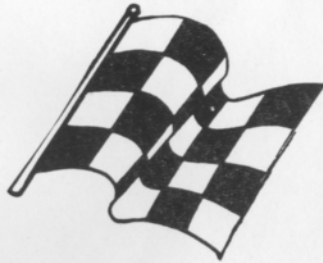
Brilliant handling...  
with excellent tread life.

## RADIAL T/A

Solid Performer...  
Classic Good Looks

## TOURING T/A

Grand-touring style...  
performance-level handling.



<b>SIDEWALL</b>	Serrated black letters	Raised white letters or serrated black letters	Raised white letters or serrated black letters	Raised white letters on one side, serrated black letters on the other side	Serrated black letters
<b>SPEED-RATING</b>	<b>Z</b> Speeds over 149 mph <b>V</b> Speeds over 130 mph	<b>H</b> Speeds up to 130 mph	<b>H</b> Speeds up to 130 mph	<b>S</b> Speeds up to 112 mph	<b>S</b> Speeds up to 112 mph
<b>RIDE</b>	<b>GOOD</b>	<b>VERY GOOD</b>	<b>VERY GOOD</b>	<b>EXCELLENT</b>	<b>SUPERIOR</b>
<b>TREAD LIFE</b>	<b>GOOD</b>	<b>EXCELLENT</b>	<b>EXCELLENT</b>	<b>SUPERIOR</b>	<b>VERY GOOD</b>
<b>WET &amp; DRY TRACTION</b>	<b>SUPERIOR</b>	<b>EXCELLENT</b>	<b>VERY GOOD</b>	<b>GOOD</b>	<b>GOOD</b>
<b>SNOW TRACTION</b>	<b>GOOD</b>	<b>EXCELLENT</b>	<b>VERY GOOD</b>	<b>SUPERIOR</b>	<b>VERY GOOD</b>
<b>HANDLING</b>	<b>SUPERIOR</b>	<b>EXCELLENT</b>	<b>VERY GOOD</b>	<b>GOOD</b>	<b>VERY GOOD</b>

NOTE: RANKINGS ARE ORDERED FROM GOOD, VERY GOOD, EXCELLENT TO SUPERIOR

**UNIROYAL GOODRICH**  
TIRE COMPANY



# WATERFORD DIGEST

KAMEI • BOGE • LOBRO • LEISTRITZ • BILSTEIN • HELLA • BOSCH • RONAL

**IMPORT SERVICE & PARTS**

**DRIVING SHOULD BE FUN!**

So you love hot cars? We do too. We're Motorheads. We sell Bilstein, Hella, Neuspeed, BBS, Ronal; if it makes the car more fun to drive, we're into it. We also offer expert service and installation.

Munk's wants to be your source for the best in performance at fair prices. Call us, or stop by, and we'll show you just how much fun driving can be.

*Dedicated to doing it right for over 15 years!*

3080 W. Huron (M-59)  
Waterford Township  
**681-8081**  
1803 Orchard Lake Rd.  
Bloomfield Township  
**335-5424**

KAMEI • BOGE • LOBRO • LEISTRITZ • BILSTEIN • HELLA • BOSCH • RONAL





# WATERFORD DIGEST

SATURDAY CLASS RACES  
AUGUST 26TH & 27TH 1989  
CLASS WINNERS

CLASS	DRIVER	CAR	BEST LAP
<b>RACE #1</b>			
FV	KEN WINTERS	CARACAL D-RED/WHITE	1:16.49
<b>RACE #2</b>			
ITA	JAMES MORRIS	BMW 2002 — SILVER	1:26.35
ITB	MICHAEL JONES	MUSTANG — WH/BLU	1:26.36
ITC	JERRY MORLEWSKI	COLT — GREEN	1:26.25
SSB	MICHAEL MEIMAR	SHELBY — SILVER/BLUE	1:25.71
<b>RACE #3</b>			
FA	MICHAEL YORICK	MARCH — RED	1:14.16
FC	TERRY ABBOT	SWIFT — RED	1:09.63
CSR	GARY BENNETT	LOLA T328 — BLUE	1:14.71
S2	ERIC SMITH	LOLA 596 — WHITE	1:13.65
<b>RACE #4</b>			
SREN	SEAN MACNEALY	SPEC RACER — RED	1:19.88
FP	ROBERT FLUCK	SPITFIRE	1:19.49
GP	ROBERT OHNECK II	SPITFIRE — RD/SIL/BLK	1:20.77
HP	JIM ELLIOT	SPRITE — WHITE	1:26.99
GT5	TED WOLLESEN	MINI — YELLOW	1:20.93
ITS	MIKE PINEGAR	MAZDA RX7 — WHT	1:22.86
SSX	DANNY KELLERMEYER	CORVETTE — WHITE	1:19.05
SSGT	MICHEAL ST. LOUIS	CORVETTE — WHITE	1:20.04
<b>RACE #5</b>			
FF	PETER HANSEL	VAN DIEMAN — RED	1:11.95
CFF	DON KITCH	CROSSLE 32F — RED/YEL	1:12.30
F440	DON GIBBONEY	NOVAKAR J — WHITE	1:13.95
<b>RACE #6</b>			
EP	JIM ARTHURS	ALFA — RED	1:19.51
GTX	PETE MORGAN	CORVETTE — ORANGE	1:15.05
GT1	HAL PRINGLE	CAMARO — YEL/WHT	1:13.36
GT2	DAVID BOWER	DATSUN 280Z — BLACK	1:19.91
GT3	GARY HUMPHREYS	PORSCHE 911 — BLUE	1:16.70
GT4	DANIEL STRONG	SUNBIRD — WHT/RED	1:25.93

AL BIZER

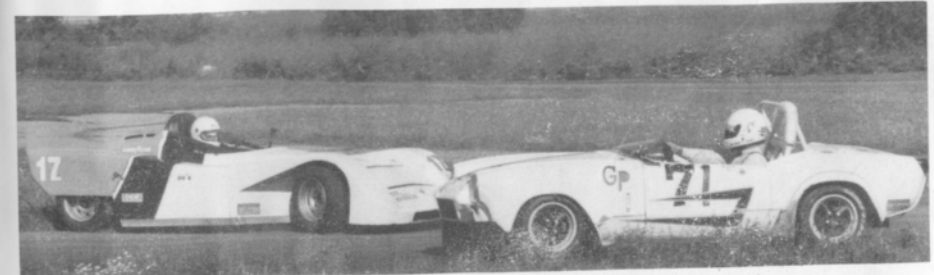


# WATERFORD DIGEST

SUNDAY CLASS RACES  
AUGUST 26TH & 27TH 1989  
CLASS WINNERS

CLASS	DRIVER	CAR	BEST LAP
<b>RACE #1</b>			
FV	KEN WINTERS	CARACAL D-RED/WHITE	1:16.08
<b>RACE #2</b>			
ITA	JAMES MORRIS	BMW 2002 — SILVER	1:26.19
ITB	MICHAEL JONES	MUSTANG — WH/BLU	1:26.35
ITC	JERRY MORLEWSKI	COLT — GREEN	1:25.92
SSA	GARY RAY	MAZDA RX7 — RED	1:25.72
SSB	MICHAEL MEIMAR	SHELBY — SILVER/BLUE	1:25.70
<b>RACE #3</b>			
FC	TERRY ABBOT	SWIFT — RED	1:08.79
CSR	GARY BENNETT	LOLA T328 — BLUE	1:14.16
S2	ERIC SMITH	LOLA 596 — WHITE	1:12.13
<b>RACE #4</b>			
SREN	SEAN MACNEALY	SPEC RACER — RED	1:20.35
FP	ROBERT FLUCK	SPITFIRE	1:19.48
GP	ROBERT OHNECK II	SPITFIRE — WH/SIL/BLK	1:19.74
HP	JIM ELLIOT	SPRITE — WHITE	1:26.76
GT5	TED WOLLESEN	MINI — YELLOW	1:20.61
ITS	MIKE PINEGAR	MAZDA RX7 — WHT	1:23.42
SSX	DANNY KELLERMEYER	CORVETTE — WHITE	1:19.87
SSGT	MICHEAL ST. LOUIS	CORVETTE — WHITE	1:21.05
<b>RACE #5</b>			
FF	LEW COOPER III	VAN DIEMAN — WHITE	1:11.44
CFF	DON KITCH	CROSSLE 32F — RED/YEL	1:12.06
F440	DON GIBBONEY	NOVAKAR J — WHITE	1:13.69
<b>RACE #6</b>			
EP	JIM ARTHURS	ALFA — RED	1:20.26
GTX	PETE MORGAN	CORVETTE — ORANGE	1:15.11
GT1	HAL PRINGLE	CAMARO — YEL/WHT	1:14.81
GT2	DAVID BOWER	DATSUN 280Z — BLACK	1:21.24
GT3	GARY HUMPHREYS	PORSCHE 911 — BLUE	1:16.69
GT4	DANIEL STRONG	SUNBIRD — WHT/RED	1:29.51

AL BIZER



# WATERFORD DIGEST

FEATURE RACES  
AUGUST 26TH & 27TH 1989  
TOP FIVE FINISHERS

CLASS	DRIVER	CAR	BEST LAP
<b>FEATURE #1</b>			
FV	KEN WINTERS	CARACAL D-RED/WHITE	1:16.33
FV	SCOTT KIEFER	CARACAL D — BLUE	1:16.79
FV	TERRY ABBOTT	AERO J — BLACK	1:16.96
FV	DAVID KLOCKOWSKI	KAMIKAZI — PURPLE	1:17.10
FV	LARRY BRADLEY	BRADLYNX — BLACK	1:18.38
<b>FEATURE #2</b>			
SSX	DANNY KELLERMEYER	CORVETTE — WHITE	1:20.32
SSGT	ROGER MIKULAS	TRANS AM — WHITE	1:23.26
ITS	MIKE PINEGAR	MAZDA RX7 — WHT	1:23.14
SSA	GARY RAY	MAZDA RX7 — RED	1:25.60
SSB	MICHAEL MEIMAR	SHELBY — SILVER/BLUE	1:25.57
<b>FEATURE #3</b>			
FC	RANDY TOLLIVER	REYNARD — WHITE	1:09.58
S2	ERIC SMITH	LOLA 596 — WHITE	1:14.30
CSR	GARY BENNETT	LOLA T328 — BLUE	1:13.54
FC	RON COBURN	SWIFT — RED	1:31.83
S2	DAWN PIERSON	LOLA 492 — WHITE/RED	1:21.28
<b>FEATURE #4</b>			
GTX	PETE MORGAN	CORVETTE — ORANGE	1:15.21
GT1	LOWELL JAMES	CORVETTE — WHITE	1:15.65
GT3	J. BYRON WALKER	DATSUN 610 — WHITE	1:16.68
FP	ROBERT FLUCK	SPITFIRE	1:19.07
GT1	GEORGE BLACK	CORVETTE — WHT/PURPLE	1:18.72
<b>FEATURE #5</b>			
FF	LEW COOPER III	VAN DIEMAN — WHITE	1:12.27
CFF	DON KITCH	CROSSLE 32F — RED/YEL	1:12.46
CFF	DAVID ANTON	CROSSLE — BLACK	1:12.43
FF	JOE COELHO	REYNARD — WHITE	1:12.26
FF	ROGER GARRELL	MONDIALE — YEL/RED	0:00. 0

AL BIZER



# WATERFORD DIGEST

## Crankshaft Craftsmen Inc.



CRANKSHAFT GRINDING  
CAMSHAFT GRINDING  
CRANKSHAFT WELDING  
POLISHING STRAIGHTENING  
HIGH PERFORMANCE WORK  
BEARINGS AVAILABLE

QUALITY BEFORE QUANTITY

RUSS TAYLOR - PRESIDENT

**(366-0140)**

2957 JEROME • EAST OF I-75 • DETROIT

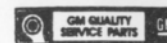
# THINK WINK

**CARS &  
TRUCKS**



Satisfying Car Buyers For Over 42 Years

**BILL WINK CHEVROLET**  
10700 FORD RD., BET. WYOMING & SCHAEFER  
DEARBORN, MICHIGAN



**582-5400**

"KEEP THAT GREAT GM FEELING WITH GENUINE GM PARTS"





## AUTOMETRIC BODY SHOPS

American .. Import



818 N. Main  
Royal Oak, MI  
398-0200

43933 Van Dyke  
Utica 48087  
726-0300

490 S. Telegraph  
Pontiac, MI 48053  
332-0600

8645 E. 10 Mile  
Centerline, MI  
757-7491

24465 Gratiot  
East Detroit, MI  
774-3455

LOCTITE PRODUCTS

**SCRIBNER**

FUEL JUGS

ompep  
goldline  
BEARINGS

**Eibach**  
RACING SPRINGS

TY-RAP® cable ties



**momo**  
Steering and Road Wheels  
Racing Steering Wheels

### WINCHESTER RACING

Tel (313) 685-1753 • FAX (313) 685-3572

Warehouse Distributor For



*Nobody Plumbs  
it Better!*

**NEOTECH**  
TIRE GUAGES

**FIREBOTTLE**  
HALOGENE SUPPRESSION SYSTEM

ACUTRAK

**SIMPSON**  
RACE PRODUCTS

**EP**  
MASTER CYLINDERS  
AND CLUTCHES

**SHRINK-KON®**  
SHRINK WRAP

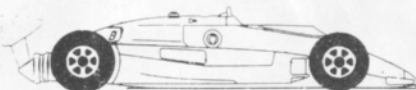
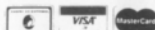
**AIRCRAFT**  
HARDWARE  
AND FASTENERS

### RACE CAR PREPARATION

CAMLOCK FASTENERS

DZUS FASTENERS

U.P.S. DAILY



1280 Holden Ave., Suite #105 Milford, MI 48042

**FOREIGN  
AUTOMOTIVE  
SUPPLY, LTD.**



Known for our LOW PRICES on HIGH QUALITY PARTS

Hours to serve you:  
Weekdays: 8:30-7:30  
Saturdays: 9:00-5:00  
SUNDAYS: 11:00-3:00

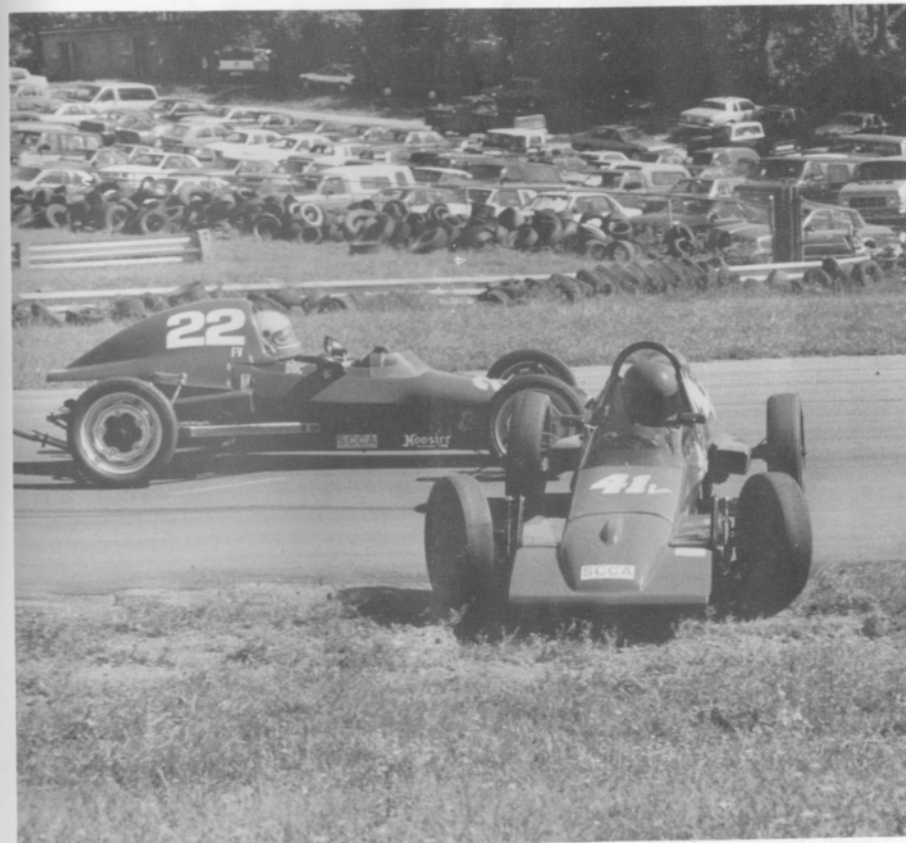
QUALITY PARTS,  
ACCESSORIES, AND  
REPAIR MANUALS  
AT DISCOUNT  
PRICES

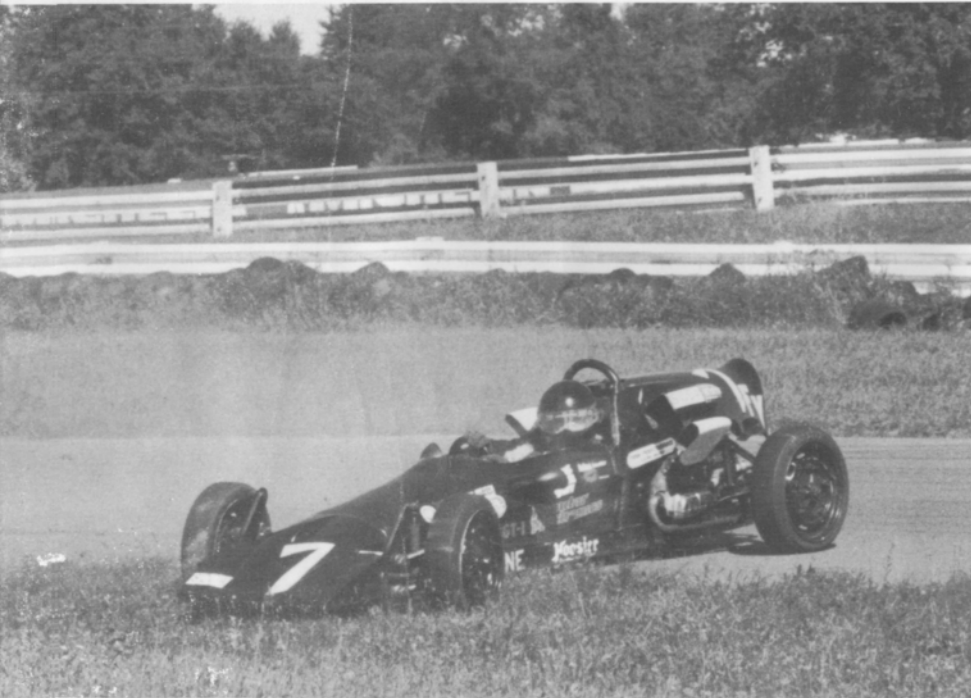
Got a Question? Call us:

380 W 11 Mile  
Madison Heights  
(5 blocks West of I-75)  
**542-6150**

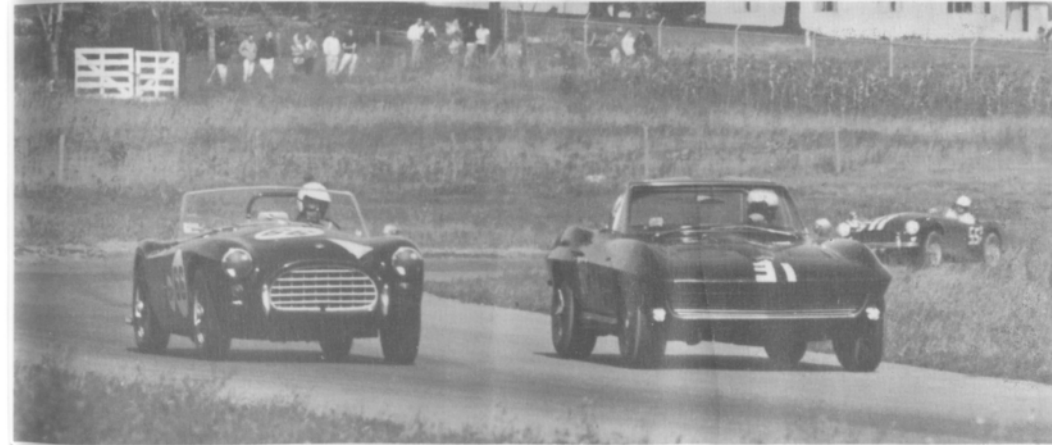
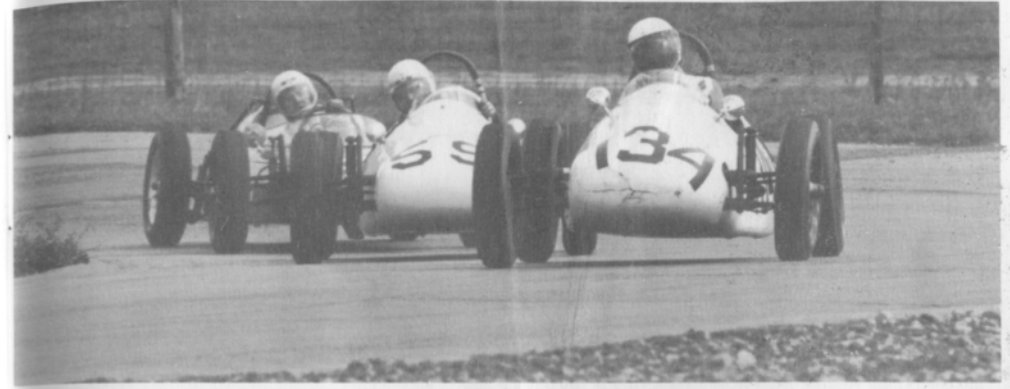
46500 Van Dyke  
Utica  
(1 mile North of M-59)  
**254-7710**

DON CASTLE





LOOKING back  
with Bizer Sept. 1964





## Beck's-ULTRA HIGH PERFORMANCE

7000 SCHAEFER ■ DEARBORN ■ MICH. 48126  
 (313) 846-2600  
 (800) 482-9381 [Mich. toll free]

### TIRES

**GOODYEAR**

**BF Goodrich**

**YOKOHAMA**

**PIRELLI**

**BF Goodrich**  
RACE TIRE PROGRAM

### SHOCKS



10% DISCOUNT TO TACA MEMBERS  
 MAJOR CREDIT CARDS ACCEPTED

### WHEELS

**BBS**

**GOTTA**

**weds**  
TURBO WHEELS

**ENKEI**

**centra CENTRA**

**Epsilon**  
ROAD WHEELS



## AUTO-CYCLE-MARINE PERFORMANCE PRODUCTS



"THE LARGEST INVENTORY IN THE MIDWEST"  
 HOSE ★ FITTINGS ★ ADAPTERS

**Aeroquip**  
high performance hose and fittings

(313) 280-1171

**EARL'S**  
PERFORMANCE PRODUCTS

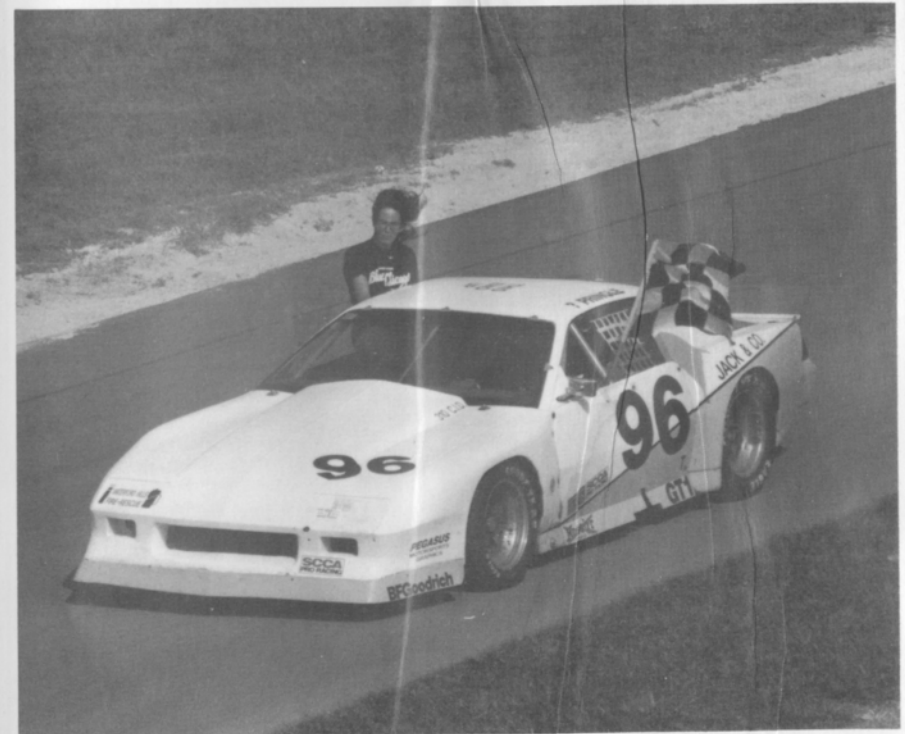
4940 Delemere, Foyal Oak, MI 48073

Peter Betrus, Jr.

Catalog \$2

Thomas J. Betrus

DON CASTLE



# WATERFORD DIGEST

## Average Lap Speed

Min/Sec	MPH	Min/Sec	MPH	Min/Sec	MPH
1:00	85.326	1:15	68.261	1:30	56.884
1:01	83.927	1:16	67.363	1:31	56.259
1:02	82.574	1:17	66.488	1:32	55.647
1:03	81.263	1:18	65.635	1:33	55.041
1:04	79.993	1:19	64.805	1:34	54.463
1:05	78.762	1:20	63.995	1:35	53.890
1:06	77.569	1:21	63.204	1:36	53.329
1:07	76.411	1:22	62.434	1:37	52.779
1:08	75.288	1:23	61.681	1:38	52.240
1:09	74.197	1:24	60.947	1:39	51.713
1:10	73.137	1:25	60.230	1:40	51.196
1:11	72.106	1:26	59.530	1:41	50.689
1:12	71.105	1:27	58.846	1:42	50.192
1:13	70.131	1:28	58.176	1:43	49.704
1:14	69.183	1:29	57.523	1:44	49.227

The Waterford Hills Road Course is 1.4221 miles long (7,509 ft. center line of track). To determine the speed of any individual car, time it for one complete lap and read off the speed from this table.

## Class Records

AUGUST 26TH & 27TH 1989

CLASS	DRIVER	CAR	DATE	LAP TIME
FA	ANDY FALBO	MARCH	8/83	1:06.10
FC	DAVID BARNETT	REYNARD	9/88	1:06.80
FF	LEW COOPER III	VAN DIEMEN	9/88	1:09.30
CFF	MARK JAMES	LOLA	9/88	1:09.60
FFR	MARK DAVIDSON	CROSSLE 32	5/84	1:17.00
F4	STUART LAMONT	XPIT	7/83	1:12.50
FV	TERRY ABBOTT	ZINK	9/88	1:15.00
F440	JIM GIBBONEY	NOVAKAR	7/89	1:12.20
ASR	ED MURRAY	CHEVRON	9/81	1:10.90
CSR	CRAIG BENNETT	RALT	7/88	1:09.90
DSR	ED MURRAY	JEDDI	9/85	1:12.80
S2	KEN WINTERS	LOLA	6/89	1:08.70
SREN	MICHAEL ALEXANDER	SP RENAULT	7/89	1:19.50
EP	LOU LIVENGOOD	PORSCHE 356	6/80	1:16.30
FP	BARRY HARTZEL	MG MIDGET	7/78	1:16.20
GP	KIRK CARLSON	MG MIDGET	8/81	1:17.00
HP	PAUL CAMERON	SPRITE	7/78	1:20.40
GT1	DOUG BUIST	FIERO	9/88	1:12.10
GT2	DAVID BOWER	DATSUN 280Z	7/89	1:18.90
GT3	J. BYRON WALKER	DATSUN 610	7/89	1:16.20
GT4	JERRY MORLEWSKI	FIAT 124	9/88	1:18.40
GT5	DICK MOONAN	TOYOTA	8/88	1:18.50
ITS	MIKE PINEGAR	MAZDA RX7	8/89	1:22.90
ITA	JAMES MORRIS	BMW 2002 TII	7/89	1:25.60
ITB	MIKE JONES	MUSTANG	8/88	1:24.70
ITC	JERRY MORLEWSKI	COLT	7/89	1:25.50
SSGT	MICHAEL ST. LOUIS	CORVETTE	7/89	1:19.60
SSA	BILL BAYLEY	FIREBIRD	8/89	1:24.20
SSB	MIKE MEIMAR	CHARGER	9/88	1:25.50
SSC	BILL ARTZBERGER	HONDA CIVIC SI	9/88	1:25.20

## Racing Classes

To insure fairness in competition, all road racing cars are grouped into racing classes by the Sports Car Club of America in its General Competition Rulebook (GCR). Waterford Hills Road Racing observes the GCR regulations with some minor exceptions.

The cars listed below are representative of their racing classes and include most of those you will see at Waterford Hills.

### SHOWROOM STOCK STREET CARS RACED AS SOLD WITH ONLY SAFETY MODIFICATIONS ALLOWED.

SSGT	Camaro IROC-Z, Firebird T/A, Mustang GT 300 ZX, Turbo, Porsc 944, Supra,
SSA	Daytona Turbo, Mazda RX-7, Fiero 2.8, Starion/Conquest Turbo, 300 ZX,
SSB	Charger 2.2, Toyota MRZ, Spectrum, Honda CRX SL, GTI/Scirocco 16V Cavalier Z24
SSC	Civic, VW GTI, Chevy Sprint Turbo, Alliance GTA, Fiero

### IMPROVED TOURING STREET CARS RACED AS SOLD EXCEPT WITH SUSPENSION AND OTHER MINOR MODIFICATIONS ALLOWED.

ITS	Datsun Z, Mazda RX-7, Porsche 914/924, Triumph TR6
ITA	Mustang/Capri V6, Mazda RX-2/RX-3, Corvair, Monza/Skyhawk V6, VW GTI
ITB	Mustang/Capri 2.3, Vega, Charger 2.2, Ope 1.9, Scirocco/Rabbit/Jetta
ITC	Alliance, Colt 1.6, Fiesta, Chevette, Arrow, Corolla, Datsun 510

### PRODUCTION SPORTS CARS, MODIFIED FOR RACING.

EP	Porsche 356 1.6L, 914 1.8L, Datsun 2000, Alfa 1750, Triumph TR-4, Lotus Super 7
FP	Midget 1275/1500, Spitfire 1500, Sprite 1275 Fiat X1/9 1.5L, Lotus 7
GP	Midget/Sprite 1100, Fiat X1/9 1.3L, Datsun 1300, Spitfire, Alfa 1.3L, Porsche 356 1.3L
HP	Austin Healy Sprite Mk I and II, Fiat 850, MG Midget 948, Fiat Abarth

### GT CLASSES CLOSED PRODUCTION CARS, MODIFIED FOR RACING.

GT-1	Corvette, Camaro, Ford Cobra II, Shelby GT-350, Porsche 911 SC, Dodge Aspen
GT-2	Datsun Z series, Mazda RX7, Porsche 914S & 924 Turbo, Sunbeam Tiger, Triumph TR-6 & TR-8
GT-3	Opel 1900, Datsun 510 1800, Mustang 230i, Pinto 2000 & 2300, Cosworth Vega
GT-4	Fiat 124 Sports Coupe, Pinto 1600, Toyota Cellica, Dodge Colt, Toyota Corolla 1600, Renault LeCar, Datsun 510 1600, Ford Escort/Lynx, VW Rabbit & Scirocco
GT-5	Datsun 200SX, Austin/Morris Mini Cooper VW 1300, NSU TT, Honda Civic, Fiat 124 1200, Toyota Corolla 1200

### SPORTS RACING OPEN COCKPIT, CLOSED WHEEL (BODY OVER TIRES) RACE CARS.

ASR	over 1300 cc but less than 6000cc
CSR	over 850 cc up to 1600 cc (with restrictors)
DSR	below or equal to 850cc
S/2000	uses Ford 2000 cc overhead cam engines only
S/R	spec racing - identical, restricted cars with 1.5L Renault engines

### FORMULA SINGLE SEAT, OPEN WHEELED RACE CARS

F/ATLC	Formula Atlantic - choice of engines in over 1100 cc up to 16000 cc range, wings and other modifications allowed, not meant to be in an inexpensive race car
F/CNTL	Formula Continental - combines old Formula C (similar to Atlantic but engines less than 1100), Super Vee (VW 1600) and F2000 (Ford 2000 cc)
FF	Formula Ford - Cortina or Pinto 1600 cc engine, strict weight to engine ratio with driver's weight included in total legal weight, very equal class
CFF	Club Formula Ford - the cars are the same as the above class but with restricted suspension geometry and tires
FV	Formula Vee - all Volkswagon components, 1200 cc engine, driver's weight included in total legal weight, very competitive class
F440	Formula 440 - utilizes Fuji two-cycle snowmobile engines and drive train, rigid suspension, wings permitted
F4	Formula Four - Canadian class, motorcycle engine power plant, engine size determines weight and transmission allowed



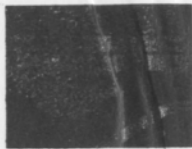
## Flags

**yellow with red stripes**



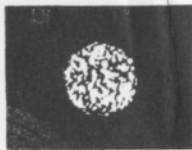
Take care, oil has been spilled or a slippery condition exists somewhere in your vicinity. Look at the track surface.

**black**



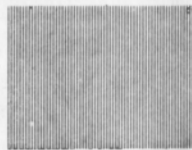
Sloppy or dangerous driving. Complete the lap you are on, stop at the Start/Finish line for consultation with Chief Steward. Waving Black Flag (displayed on all corner stations) means the race is stopped. Slow down immediately and proceed around the track with extreme caution to the pit lane for a re-start.

**black with orange ball**



(Meatball Black Flag) There is something mechanically wrong with your car. Proceed to your pits at reduced speed.

**green**



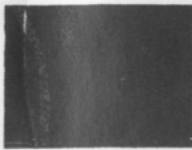
(Or no flag) Course is clear.

**yellow**



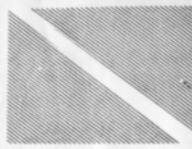
(Stationary) Take care, danger, no passing. (Waving) Great danger, be prepared to stop, no passing.

**red**



Waving red (displayed by the Starter only) means the race is stopped, slow down immediately and proceed around the track with extreme caution to the pit lane.

**blue with diagonal yellow stripes**



(Motionless) Another competitor is following you closely.

**checkered**

You have finished the race (or practice session). Complete one "cool-off" lap at reduced speed before entering the pits.



## Waterford Hills Course Map

a 1.5 mile asphalt road course at waterford, michigan

