

It always looks like next year's car.

The 1968 Jaguar XKE really looks as if Jaguar designed it too soon. And when it comes to engineering, the '68 XKE is years ahead of its time, too.

It's more powerful than any imported car selling for less than \$10,000, yet it can cover 20 miles of turnpike on a gallon of gas.

Standard equipment includes: real wire wheels, prime hide leather upholstery, 4-wheel disc brakes, radial ply tires, 4-wheel independent suspension, adjustable steering wheel.

The Jaguar roadster sells for \$5372. (Port of entry.) Come in and let us show it to you.

Jaguar

FALVEY MOTOR SALES CO.

Distributors for Jaguar in Michigan and Ohio

Authorized Detroit Area Jaguar Dealers:

FALVEY IMPORTED CARS, INC.

22600 Woodward Ave., Ferndale

BOB OWENS SALES INC.

34043 Ford Rd., Westland

SAMPLE SPORTS CAR SALES

12132 Gratiot, Detroit

PONTIAC SPORTS CARS, INC.

467 Auburn Ave., Pontiac

SPORTS CARS, INC.

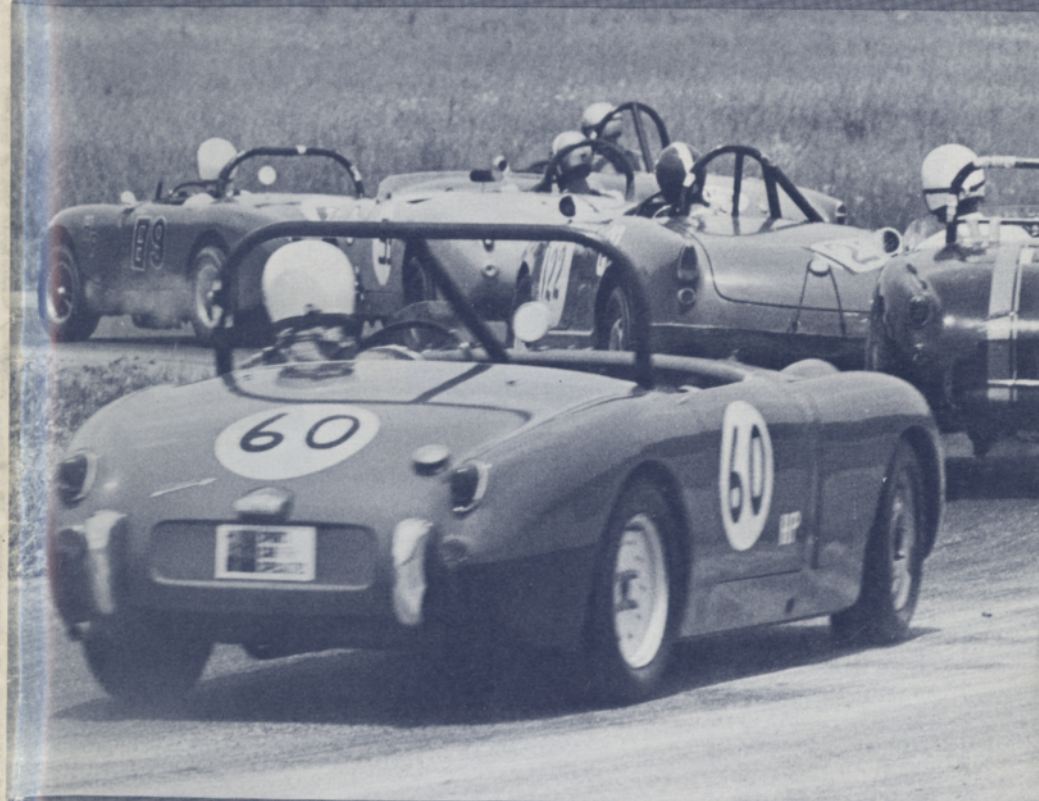
G-5280 S. Dort, Flint

OVERSEAS IMPORTED CARS, INC.

936 N. Main St., Ann Arbor

WATERFORD HILLS digest

JULY 1968/25c



MIDSUMMER TROPHY RACES

CINTURATO 367

The world's most advanced radial ply tire for imported cars. Clings tenaciously to wet and dry surfaces. Lack of centrifugal distortion makes it difficult to loosen its grip on the road at any speed. Doesn't "break away" abruptly when cornering to the limit.



"A tire must be built from the inside out for highest performance under specific conditions."

For instance, Pirelli tires' fabled grip on a wet road is no mere accident. Or their amazing ability to corner at high speeds. Or their exceptionally long tread life and lack of centrifugal expansion at speed. Or the way they quicken up steering and add to the sensitivity of your car's response. Each Pirelli tire differs in weight . . . rubber compounds . . . casing construction . . . ply and tread design. In every case it is the specific car and driving pattern that should determine the proper tire type. Consult your Pirelli specialist for proper fitment.

CINTURATO CN 72

The world's most advanced radial ply tire for American cars. Designed in conjunction with Detroit engineers. Skillful use of all-textile casing and belt plies minimizes low speed harshness. 150 mph. speed rating. Available in blackwall and whitewall tubeless construction.



INVERNO

Uncompromising performance on snow and slush. High pulling power. Resists lateral sliding. On dry pavement, remarkably quiet running. Excellent performance on wet pavement.

SEMPIONE

Remarkably safe on wet roads. Low slip angle with good directional stability and steering control. Prevents swerving on streetcar tracks, concrete ridges, etc. Tops mileage of other conventional tires.



B/S

Ultimate development of the radial ply concept. Lack of distortion in the contact patch insures twice the conventional tire mileage for each replaceable band. Doesn't "break away" abruptly. Summer and winter bands.

Vol. 9, No. 3

July 1968

WH digest



Bizer Photo

CONTENTS

The Inside Line	3
Sports Car Activities	4
Lap Speed Chart	10
Class Records	11
Photo Page	20
Course Map	28

The Waterford Hills Digest is published by the Oakland County Sportsmen's Road Racing Corporation in conjunction with each major race at the Waterford Hills Road Course. Subscriptions are available at \$1.25 per year. Advertising rates available on request. Editorial contributions are welcomed; however, the Digest is not responsible for the return of unsolicited material of any kind unless it is accompanied by a stamped, self-addressed envelope. Address all communications to: Waterford Hills Digest, 20771 Dexter, Warren, Michigan 48089. Phone: Area Code 313, 772-0422. Copyright © 1968 by Oakland County Sportsmen's Road Racing Corporation. Reproduction in any manner in whole or part without written permission prohibited. Litho in U.S.A.

Managing Editor
Advertising Manager Elaine Fischer

Production Al Bizer

Photographs Al Bizer

Office Manager Mary Beth Pletcher



BELLE TIRE DISTRIBUTORS

**The Minibug will get you
if you don't watch out**



*It'll run about
anywhere you
want to go —
beaches, woods, hills,
snow — and on the road.*

The Minibug

Race it, too—

BASIC KIT—\$395. Fiberglass body shell, hood and dash. Choice of 5 colors. Full instructions for shortening V.W. chassis to 80 inches and assembling your Minibug. Windshield frame, support frame, and headlights — \$100.

Complete accessories, tops, frame shortening available.

GREENE MOTORS VOLKSWAGEN

34501 PLYMOUTH RD. LIVONIA, MICH. 48150
Between Wayne and Farmington Rds.

425-5400

Auth.



Dealer

539-9700

**Complete Service and Parts
for**

**Volkswagens and Formula Vs
Complete Body Repairs**

THE INSIDE LINE



You know Ed Whatsisname? The guy who throws colored hankies at the racing cars, and likes to stand out in the rain all day, and gets a thrill out of having great big hairy machines mash his toes, and gets so excited he jumps up and down like a cheerleader at her first big game?

Ed who? Whoolihan? Hooligan? Oh, Ed Houlehan. Yeah, that guy. The Chief Starter. Hero-type.

Seems he's starting his one-thousandth race (yeah, 1000th race) this weekend. Seems people all over the country think he's the best starter ever. It's nice to have the home team's opinion confirmed.

Ed, baby, we're sorry we didn't find out in time to make a real scene about it, but we did manage to alert the crowd. So please, don't twist your ankle, or change your brand of cigarettes, or blow your cool. Remember, you've got an audience (what else is new?).

French onion soup after the races?

esf

SPORTS CAR ACTIVITIES

Aug. 7	Club Meeting	OCSRRC
24-25	AUGUST ROAD RACES	"
Sept. 4	Club Meeting	OCSRRC
14-15	REGIONAL RACES	SCCA
28-29	FALL CLASSICS RACES	OCSRRC

BOB OWENS DATSUN

Sports Cars

2000 cc — 5 speed

Sedans & Wagons
4 speed or automatic

½ ton pick-up \$1766

34043 Ford Road



4 speed
1600 cc
\$2766

Westland, Michigan

722-3910

562-3930

OFFICIALS

Race Coordinator Joe Charette
Asst. Coordinator Tom McDonald
Chief Steward Dan MacDonald
Asst. Steward Ralph Yeckley
Licensing/Driver Training/Ralph Yeckley
Technical Inspector Phil VanZandt
Chief Starter Ed Houlehan
Timing & Scoring Joan Voltmer
Flags & Communications .. Dave Mackinder
Course Marshal Stan Gorman
Safety Marcel Dupont
Paddock Marshal Mike DeCiantis
Registration Andrea Gleason

Car Classification Bernd Leckow
Trophies Paul Susalla
Membership Andrea Gleason
Public Relations Bob Gustafson
Course Physicians F. Johnson
..... H. Larabee
Club President Frank Cipelle
Vice-President Paul Susalla
Secretary Diane Brogan
Corporation President Art Novak
Vice-President Frank Cipelle
Secretary Joan Voltmer
Track Manager Pete Rose

BERGEN MOTORS

corporation



Ford Cortina




Authorized Dealer — Sales — Parts — Service

Model "C"
Cortina GT

MG-B MGB-GT Coupe
Sprite MG Midget
Austin America

1000 W. Maple Rd. Walled Lake MA 4-1331

Everybody's
BUGS  about

TOM SULLIVAN Volkswagen

Most Modern  Dealership in America

25400 W. 8 Mile Rd., ½ Mile W. of Telegraph • phone 353-6900

Rich Bell's

SPORTS CAR SPECIALTIES, INC.
IMPORTERS & DISTRIBUTORS
WORLD'S FINEST MOTORING ACCESSORIES
23257 WOODWARD FERNDALE, MICH. 48220

Amco

Buco

Crusader Vee

EMPI

Formula 1

Kellison

Lucas

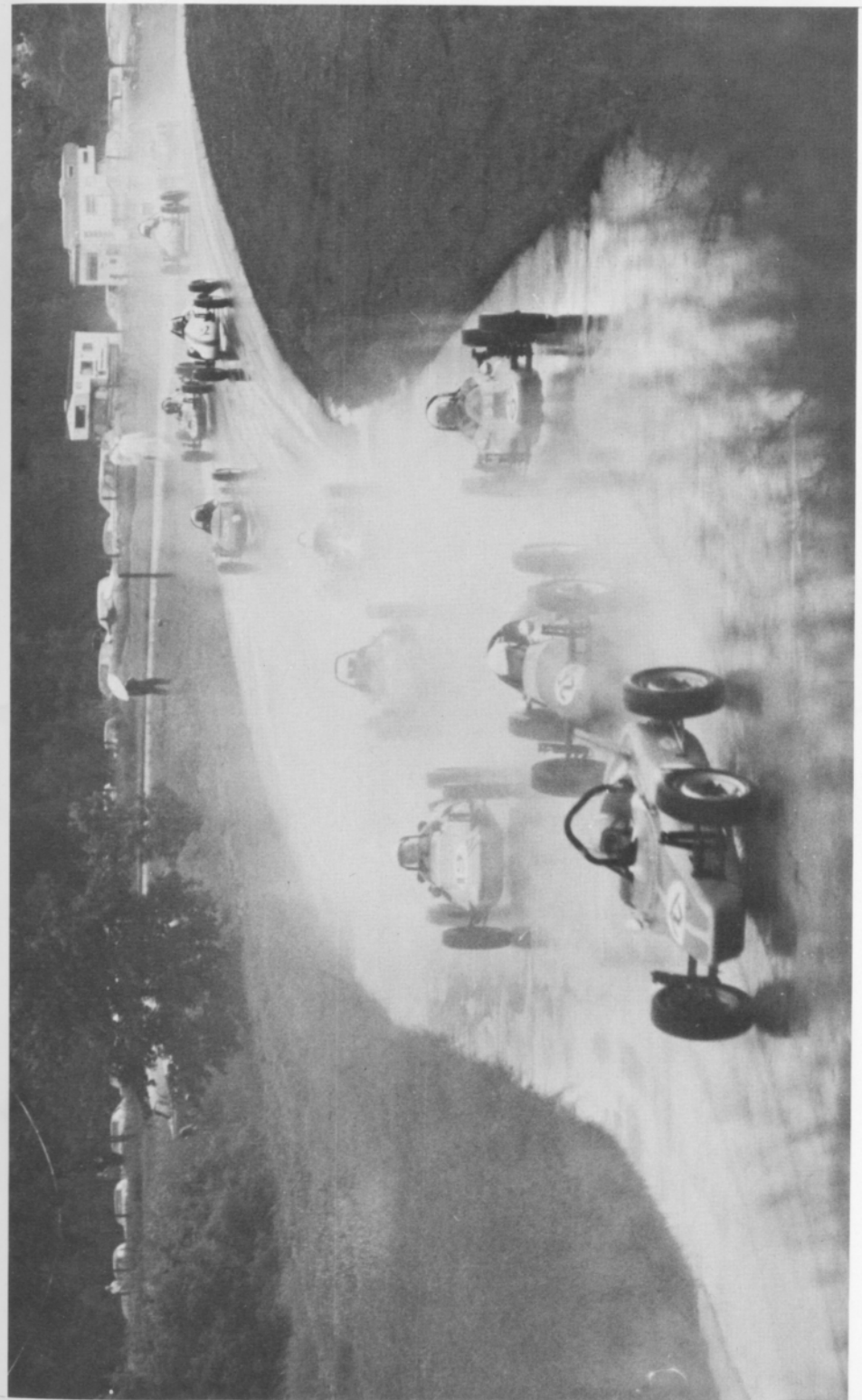
Oil Zum

P & G MFG.

Porsche Stuff

Sebring

*Stewart-
Warner*





PONTIAC SPORTS CAR, INC.
467 Auburn Ave. - Pontiac

Phone 335-1511
335-1138



MG-B
MG Midget
Austin America
Austin-Healey Sprite



Authorized Dealer for MG and Jaguar
Sales Service Parts



Phone
335-1511
335-1138

PONTIAC SPORTS CAR, INC.
467 Auburn Ave. (M59E), Pontiac
"SERVING YOU IS OUR BUSINESS"

AVERAGE LAP SPEED CHART

Min/Sec	MPH	Min/Sec	MPH	Min/Sec	MPH	Min/Sec	MPH
1:10	73.137	1:20	63.995	1:30	56.884	1:40	51.196
1:11	72.106	1:21	63.204	1:31	56.259	1:41	50.689
1:12	71.105	1:22	62.434	1:32	55.647	1:42	50.192
1:13	70.131	1:23	61.681	1:33	55.041	1:43	49.704
1:14	69.183	1:24	60.947	1:34	54.463	1:44	49.227
1:15	68.261	1:25	60.230	1:35	53.890	1:45	48.758
1:16	67.363	1:26	59.530	1:36	53.329	1:46	48.298
1:17	66.488	1:27	58.846	1:37	52.779	1:47	47.846
1:18	65.635	1:28	58.177	1:38	52.240	1:48	47.403
1:19	64.805	1:29	57.523	1:39	51.713	1:49	46.968

The Waterford Hills Road Course is 1.4221 miles long (7,509 ft. center line of track). To determine the speed of any individual car, time it for one complete lap and read off the speed from this table.

The Official Time Pieces used at the Waterford Hills Road Course are CERTIFIED BULOVA MASTER WATCHES. These instruments are made available to OCSRRRC through the courtesy of THE BULOVA WATCH COMPANY.

Your Circle of Confidence



Paul Susalla
1967 Waterford Champion

We'd like to show you Carl Bross's unique Ferrari collection, but our space is limited. We can, however, show you any number of his elegantly designed diamond rings. Orange Blossom—the First name in diamond rings that are backed by a full one-year TOTAL guarantee. Let us bring you into this circle of confidence.

A. J. Susalla JEWELERS

21019 Mack Avenue
Grosse Pointe Woods
881-0600 (Closed Mondays)

BULOVA

OFFICIAL TIMEPIECE

Buy a Bulova and you buy the same matchless Bulova craftsmanship that goes into the creation of the most accurate, compact, mechanical instrument ever created for timing purposes—the Bulova Timer.

SHAW JEWELRY

24 N. SAGINAW • PONTIAC • FE-26022
is honored to sponsor the world-renowned Bulova Timers that will be used as the Official Timepiece at

Midsummer Trophy Races

WATERFORD HILLS ROAD COURSE

BULOVA "23"
23 jewels, finest in 4 practicing jewelers, including certified water-proof, unbreakable mechanism shock resistant, anti-magnetic all steel case sweep second hand, \$5950

BULOVA DIAMOND LA PETITE
23 jewels, 2 diamonds, finest in 4 practicing jewelers, including certified water-proof, unbreakable mechanism shock resistant, anti-magnetic all steel case sweep second hand, \$5950

EASY CREDIT TERMS

Discount given to all O.C.S.R.R.C. members.

Firestone Racing Tires
Kelly Tires
Semperit Tires
Competition Retreads
Cheater Slicks

Alignment

All Types of Wheels
Mounted & Balanced

Minilite Wheels

KLIFFEL TIRE CO.

21427 Gratiot Ave.
E. Detroit, Mich.
PHONE PR 7-9252

CLASS RECORDS

CLASS:	CAR	DRIVER	TIME	SPEED	DATE
<u>Production Sports:</u>					
A-P	AC Cobra	Tom Payne	1:22.2	62.206	5/64
B-P	Corvette	Bill Petree	1:21.6	62.748	5/67
C-P	Lotus Super 7	Jeff Lance	1:22.5	62.055	8/67
D-P	Triumph TR-4A	Tom Varner	1:24.9	60.301	8/67
E-P	Porsche	Garrett Van Camp	1:24.5	60.587	8/67
F-P	Lotus 7	Chris Gahman	1:25.1	60.159	9/67
G-P	MG Midget	Bill Koch	1:24.5	60.587	8/67
H-P	Sprite	Dwight Knupp	1:26.7	59.049	9/66
<u>Sports Racing (Modified):</u>					
C-S/R	McLaren Ford	Richard Brown	1:16.2	67.171	9/67**
D-S/R	Lotus 23-C	Glenn Baldwin	1:22.4	62.131	9/64
E-S/R	Porsche RS	Tom Payne	1:23.4	61.386	10/61
F-S/R	Porsche RS61	Frank Kahlich	1:21.3	62.971	8/67
G-S/R	Lola	Pete Dawson	1:22.4	62.131	9/64
H-S/R	Kurtis Saab	Dave Johnson	1:25.1	60.159	9/66
<u>Formula:</u>					
B	Brabham	Allan Moffat	1:17.2	66.316	7/67
C-1 (Rear)	Lotus XX	Ken Nielsen	1:19.4	64.478	8/65
C-2 (Front)	Woodward DKW	John Grames	1:19.3	64.556	5/
Vee	Bobby Vanguard	Tom Abbott	1:24.8	60.372	7/
Libre	Lotus XX	Ken Nielsen	1:23.2	61.533	8/65
<u>Sedans:</u>					
S-1	NSU-Prinz	Paul Susalla	1:30.4	56.632	8/67
S-2	Anglia	Peter Quenet	1:27.0	58.846	8/67
S-3	Cortina	Bill DeBoer	1:27.2	58.711	9/67
S-4	Lotus Cortina	Allan Moffat	1:24.2	60.802	9/66
S-M	VW Porsche	Erhard Dahm	1:29.5	57.202	5/63

**Course Record

BURBAN MOTOR CO.

ENGLISH FORD LINE

ANGLIA CORTINA GT
 LOTUS

SALES PARTS SERVICE

8000 MICHIGAN AVE. DETROIT LU 2-6300

Michigan Sports Car Club

M.S.C.C. membership is made up of motor sports enthusiasts; enthusiasm being the only prerequisite. Candidates are expected to work one event before qualifying as members. Club activities include a full yearly calendar of gymkhanas, rallies and ice runs. Annual dues are \$10.00 and \$1.00 for wives. Monthly meetings are held on the second Wednesday of each month at 8:00 P.M. at Botsford Inn, Grand River and Eight Mile Road. For Information call Bill Smith—TU 5-2178.

"MICHIGAN IMPORTED CARS"

Complete Line of Used Foreign
Car Parts are Available

Sprite, Triumph, M.G., V.W., Etc.

Weekdays 9:00 A.M. to 5:00 P.M.
Saturdays 9:00 A.M. to 4:00 P.M.

Starters, Generators, Engines,
Transmissions, Wheels, Etc.

PA 9-1010

350 South Newburgh Rd.
Westland, Michigan 48184

Ralligators

As the name implies, this is a club for rally enthusiasts. The only membership requirement is an active interest in this type of motorsport, since this is the only type of activity offered.

Annual dues are \$7.50. Meetings are held on the second Thursday of each month at 8:00 p.m. at Amato's Restaurant, 6926 Wyoming, Detroit.

For further information call Bill Stephenson, 646-8584.

Ford Motorsports Club

A keen interest in automotive vehicles and motorsports is the prime prerequisite of the Ford Motorsports Club which is made up of 85 percent Ford employees and 15 percent non-employees. Both a competitive and social atmosphere exist, as activities range from gymkhanas, time trials, slaloms, rallies, club trips, and social gatherings.

General Membership meetings are held the second Thursday of each month at 8:00 PM at Ford Central Office Building on Michigan Avenue.

Additional information: Lois Paliga, 561-2536 or Write: Ford Motorsports Club, Director of Membership, Box 296, Main Office, Dearborn, Mich.

BOB OWENS SALES, INC.

MG-B, MGB-GT Coupe, MG Midget Mk. III, Sprite Mk. IV

Austin America — All New for '68'

4 Speed — \$1705, 4 speed fully automatic — \$1845 P.O.E.

Authorized Dealer — Sales — Parts — Service



DATSUN 2000

OVERHEAD CAM

135 h.p.

5 speed transmission

CAR & DRIVER—JUNE '68

"Not only is the Datsun the quickest of the group (TR-250—MG-C—3 liter Austin Healey Six) but it's also the least expensive.

\$299800



Including Radio, Console, Tonneau Cover,
Self-Storing Top, etc., etc. No Extras to Buy.

Midwest's Largest Authorized Datsun Dealers

LEO ADLER

28001 Grand River
at Eight Mile
476-5710

Michigan Engine Supply

Michigan Distributors
For "Beck" Foreign
Car Parts and Accessories

ELECTRICAL

Lucas • Bosch • Marelli
S.E.V. • Paris Rhone

CARBURETORS

Solex • S.U. • Bing

PLUS

Gaskets • Valves • Pistons
Rings • Clutches • Oil Filters

Blaupunkt Radio
Abarth Mufflers

PIRELLI

TIRES



OILS

Phone LI 7-9484



Imported Auto Distributors

ROVER 2000 TC



ALFA ROMEO DUETTO



VOLVO 144



LANDROVER



LARGEST IMPORTED CENTER
IN MIDWEST

Phone 541-6360

WORLDWIDE IMPORT SERVICE

THE FINEST
IMPORTED CAR
SERVICE

All Makes
All Models

SEE -
ROY GAMMAGE

Phone LI 2-1314



10200 W. 8 Mile Rd. Ferndale, Michigan

HANLEY DAWSON CHEVROLET



Home of the Winners

Michigan's Volume Corvette Dealer



Hanley Dawson's 1967 Corvette:
Fastest A-Production in the U.S.A.!
8 first places at Waterford in 1967!
Detroit News Trophy Winner!



Hanley Dawson's 1968 Corvette:
Most powerful yet!
427 L-88 aluminum heads
and all the goodies!



4 Full-Time Corvette Mechanics
on duty to back up our
Exclusive Hanley Dawson warranty.



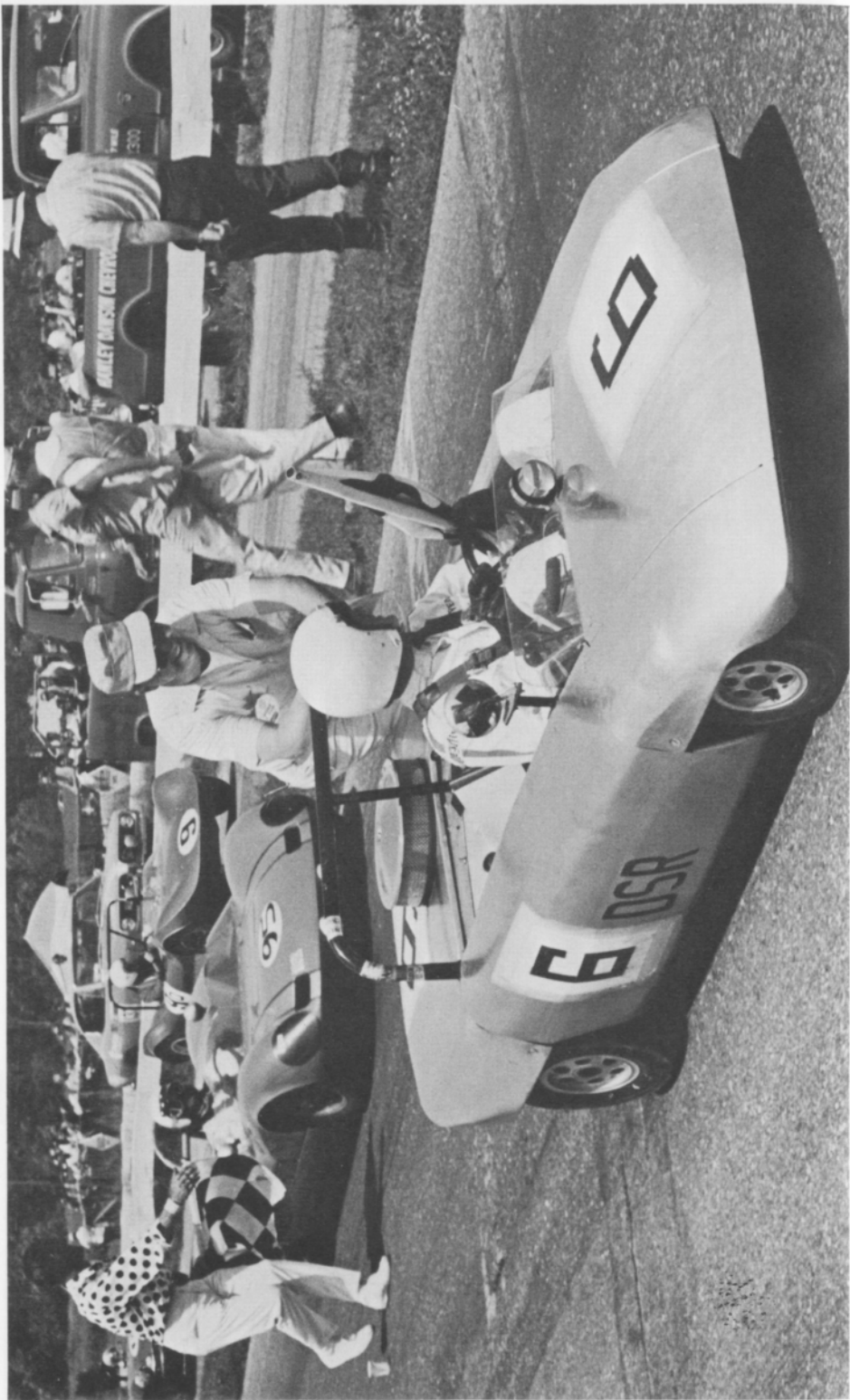
Join the in-crowd
at Hanley Dawson's.
Courteous, experienced salesmen
to help you.

HANLEY DAWSON CHEVROLET, INC.

West Seven Mile at Lodge Expressway

342-2829





**To anyone who
bought a second car
in the last month:**

Pity.

If only you had waited a little longer!
Because now there's America—the first
car designed to be a second car.

With automatic/manual transmission.
Powerful front-wheel drive. Big-car rid-
ing liquid suspension. An
interior roomier than a Rolls-
Royce Silver Shadow.
Up to 30 miles per gallon.

And a price—\$1845.—that makes America
the lowest-priced car with an automatic
transmission.

When it comes to buying an old-style
second car, there's a new adage: he
who hesitates is saved.

**America by Austin,
The first car built to
be a second car.**

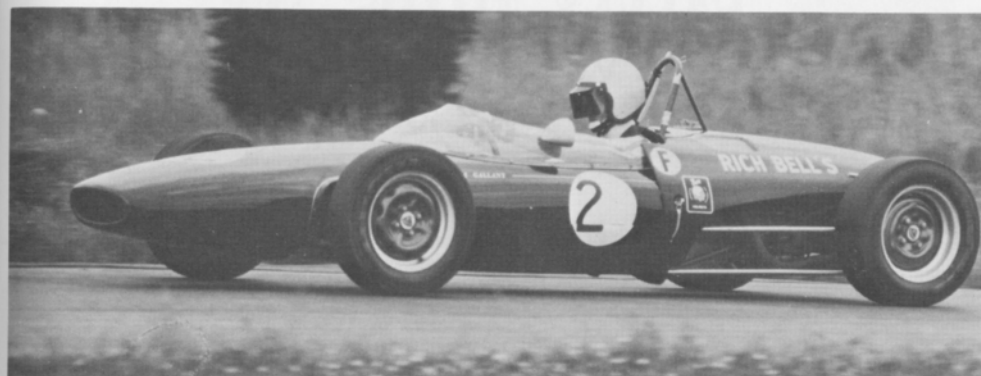


FALVEY IMPORTED CARS, INC.

22600 Woodward Avenue

Ferndale, LI 3-5000, JO 4-5444

SCCA ACTION





FROM FALVEY AUTOS

The Car that Speaks for Itself.



SERVICE FROM FALVEY AUTOS

What's equally important is our pride in our service department . . . to us this after-sale service is like a good liqueur — it should settle your faith in us.

FALVEY AUTOS, INC.

21350 Woodward
Ferndale, 398-4330



SAMPLE SPORTS CAR SALES

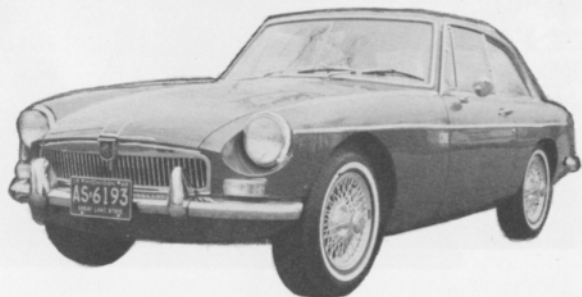
Sales · Service · Parts

12132 GRATIOT · DETROIT · DR1-7370

East Side's

Finest Cars

Finest Service



REPAIRS ARE COSTLY!!

Are *you* experiencing excessive down time due to premature fatigue failures in highly critical parts? We can inspect your *new and used* parts for defects not visible to the naked eye, plus precision shot peen them for longer life.

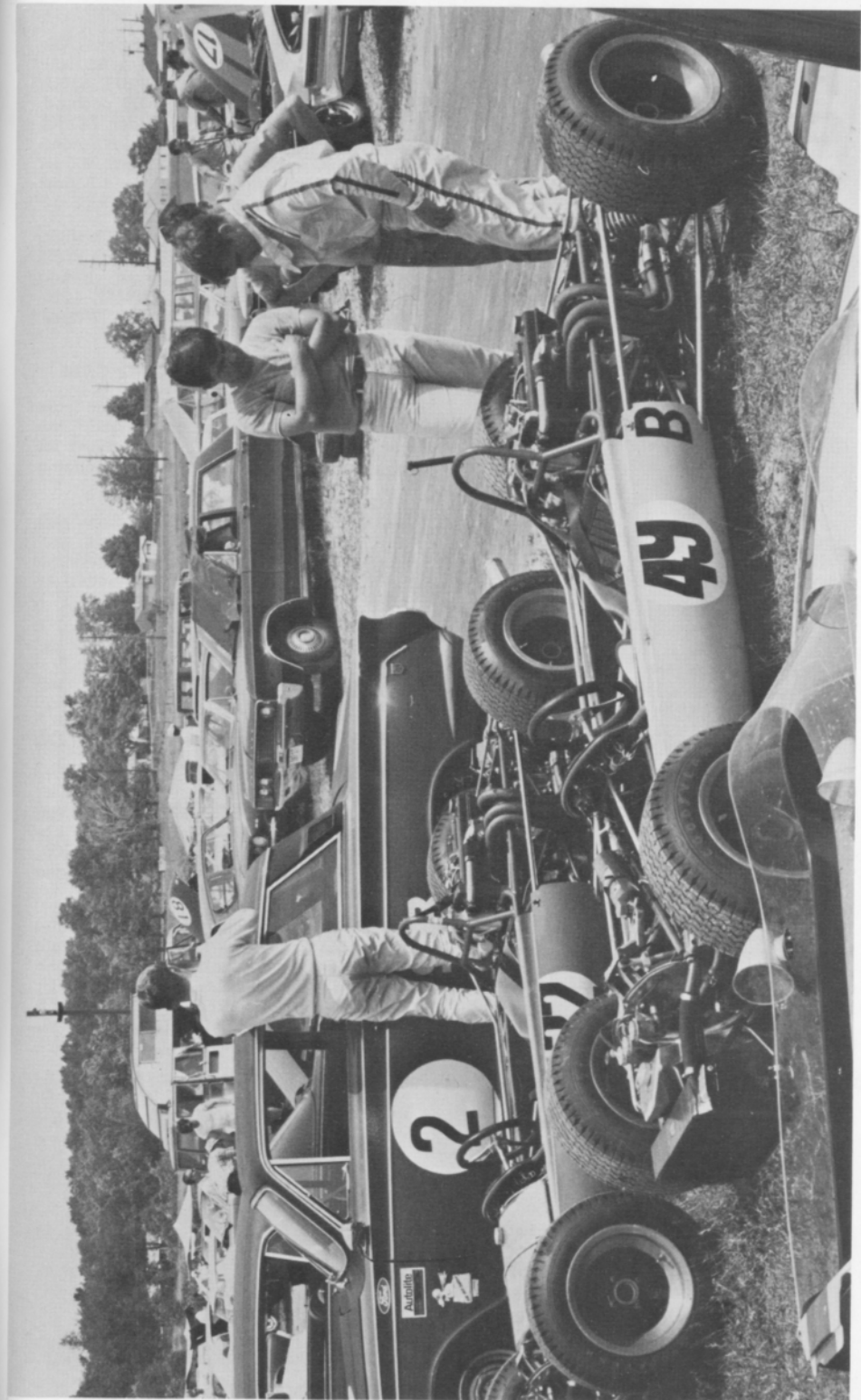


NATIONAL TESTING & RESEARCH LABORATORY, INC.

11301 SCHAEFER
DETROIT, MICHIGAN 48227
AREA 313, PHONE 834-7500

Your racing machine parts are handled with the same techniques developed and used for Aero-space parts.

Engine, suspension and drive train parts should be checked in the new as well as used condition.



OCSRRC RACING CLASSES

PRODUCTION SPORTS CARS

"Production" Sports Cars (i.e., cars not designed primarily for racing) are grouped in classes according to their racing performance. This system of classing makes driver skill rather than car performance the primary factor in winning races.

CLASS A: Abarth Simca 2000; Cobra 427; Sting Ray 427 (thru 1967); Sting Ray 427 Roadster (1966); Griffith 200; Porsche GTS/904; Shelby GT500 (thru 1967); Sting Ray 396.

CLASS B: Aston Martin DB4, DB5, DB4GT and Zagato; Cobra 289; Corvette 327 and 283; Sting Ray 327 (thru 1967); Sting Ray 327 Roadster (1968); Ferrari 250GTO, 275-GTB, Berlinetta Lusso, 250GT (SWB), GT (California, coupe and cabriolet), 2-plus-2; Jaguar E 3.8 and 4.2; Shelby GT350 (thru 1966, and 1-4V 1967).

CLASS C: Abarth Simca 1300; Alfa Romeo TZ; Datsun SRL311U; Ginetta G4-1500; Lotus Elan (roadster, coupe and drophead); Mercedes Benz 300SL; MGC; MGC-GT; Morgan SS; Osca 1600 GT; Porsche Carrera 1500 and 1600; Porsche 356B, C2000 GS, 911, 911 S, (11L; Sunbeam Tiger 260; Toyota 2000GT; Triumph TR250 and TR5.

CLASS D: AC Bristol; Aceca Bristol; Alfa 2600 Sprint and Spider; Arnolt Bristol; Austin-Healey 3000; Daimler SP250; Elva Mk. 3 and 4 (1800); Elva Mk. 4 (T1800); Fairthorpe Electron; Fiat Abarth 1000 DOHC; Ginetta G4-1000; Jaguar XK120, 140, 150; Lotus Super 7; Marcos GT1000; Speedwell GT2A and 2B; Triumph TR4, TR4A (IRS); Turner Climax; TVR Mk. 3 1800; TVR Climax; Yenko Stinger.

CLASS E: Alfa Duetto, Giulia Spider Veloce 1600, Giulia Sprint GT and GTC, Sprint Speciale; Austin-Healey 100-6; Elva Mk. 4 T Ford, Mk. 1, 2, 3, 4 1622; Fairthorpe Electron Minor; Lotus Elite; Mercedes 250 SL; MGB; MGT-GT; Morgan plus-4; Porsche 912, 356C/1600SC and 265B, S90, 356 1500/1600 A, B, C; Triumph TR2, 3, 3A, 3B, GT6; Turner 1500; TVR Mk. 3 1622; TVR Vixen 1600 Ford (provisional); WSM GT; GSM Delta.

CLASS F: Alfa Giulietta Super 1300, Sprint Speciale, Giulia Sprint and Spider 1600; Alpine A110-1100; Austin Healey 100-4, Sprint 1275; Datsun SPL311 and SPL 311U; Fiat Abarth OT 1300/124 coupe; Glas GT1700; Lotus 7 and 7A; Mercedes 230SL; MGa 1500, 1600, 1622, twin cam; MG Midget 1275; Morgan 4/4 Mk. 5; Sabra Sport; Sunbeam Alpine; Spitfire Mk. 3 1300; Volvo P1800; GMS Delta (Ford 105E).

CLASS G: Alfa Sprint and Spider 1300; Abarth OTS 1000 coupe; Alpine A108-1000; Sprite 1100 and AN8; Datsun SPL 310U; Fiat Abarth 700, 750DOHC, 1000 pushrod, OT1000 Spider; Fiat 1500 Spider DOHC, 1500 Spider and cabriolet, 124 Sport Spider; Glas 1300GT; Honda S800; Matra; Midget 1100 and AN3; Porsche 1300; Rene Bonnet CRB; Spitfire Mk. 1 and 2; Turner 950S.

CLASS H: Sprite 948 Mk. 1 and 2; DB HBR5 851-954; Fiat 850 Spider; Fiat Abarth 850S, 750GT, 750MM; Fiat 1200 Spider; Honda S600; Midget 948; MG TC, TD, TF 1250, TF 1500; Morgan 4/4 Mk. 4; NSU Wankel Spider.

MODIFIED OR SPORTS RACING CARS

"Modified" Sports Cars (i.e., sports cars designed specifically for racing, and "Production" cars that have been modified for racing) are grouped according to engine size.

CLASS A: Over 2000 cc (over 122 cu. in.); **CLASS B:** 1300 to 2000 cc (111½ cu. in.); **CLASS C:** 850 to 1300 cc (46 to 111½ cu. in.); **CLASS D:** Under 850 cc (under 46 cu. in.).

SEDANS

Six classes of Sedans are run, the cars being grouped by performance potential.

CLASS VW: Volkswagen 1200 and 1300.

CLASS I: Renault; Simca 994 & 1290; BMW 700; Mini-Minor 850; Saab Standard 750, 850 and 750 Sport; Ford Anglia 997; Fiat 600, 750, 850, 1100 and 1300; Opel Kadette 1078; Hillman Imp 875; MG 1100; NSU 1000 L, S, C, 996 cc; Volkswagen 1500; Honda 750.

CLASS II: Alfa Giulia 1300; Ford Anglia 1198; Mini Cooper S 970 and 1071; Renault Gordini R8 1108; Saab 850 Sports; Hino Contessa 1251; Datsun 1595; Saab 1498; NSU TT-1085; NSU TTS-996; NSU 1200 TT-1117; Fiat Abarth 1000, Volkswagen 1600; Mini Cooper 997.

CLASS III: Alfa TI 1600; BMW 1600 and 1800 TI; Corvair Monza; Ford Cortina 1498; Isuzu Bellel 1991; Sunbeam and Hillman 1725; Toyota Carona 1899; Volvo 1600 and 1800; Valiant 2786; Mini Cooper S 1275; Renault Gordini 1300; NSU 1200 TTS and TTC 1177; Fiat 1200.

CLASS IV: Alfa TI Super 1600 and GTA; BMW TISA, Lotus Cortina; Corvair Corsa, Porsche 911; Fiat Abarth 1200; Sedans over 180 cu. in. to 5 liters, 112" wheelbase, and 3500 lbs. maximum.

CLASS V: Sedans exceeding Group II Specifications (i.e., Canadian & FIA Group 5).

BURBAN MOTORS



	HEALEY	HEALEY SPRITE
MG 1100	MGB	MG MIDGET
SALES	PARTS	SERVICE

8000 MICHIGAN AVE. DETROIT LU 2-6300



BUD CLARK, Inc.

CR 8-8050



PORSCHE



VOLKSWAGEN

23615 Michigan Ave. Dearborn, Michigan

OVERSEAS MOTORS INC.

NSU Sales-Service Test Drive the Better German Economy Car.



The Competition Winner.

4 Cyl. 1000 CC Engine
5 Main Bearing Crank
51 H.P.

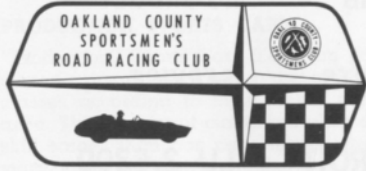
Overhead Camshaft

Seven Models to Choose from,
Including the New RO-80 Sports Sedan
with Double Wankel Engine.

Also NSU Competition Parts Distributor.

32400 Plymouth Rd. Livonia, GA 7-4840

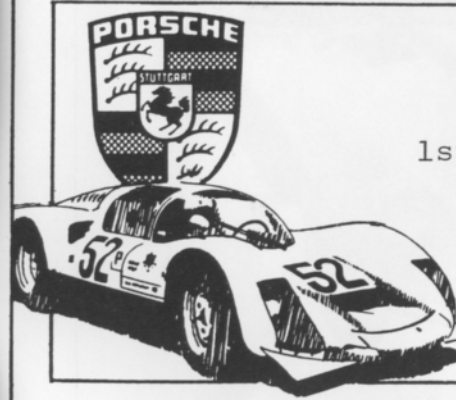
WATERFORD HILLS



A 1.5 MILE ASPHALT
ROAD COURSE AT
WATERFORD, MICH



PORSCHE



1968 Record
1st Overall/1st in Class

- Daytona •
- Sebring •
- Targa Florio •

ERHARD MOTOR SALES

20455 GRAND RIVER, DETROIT

PHONE 538-9160



For the sheer joy of motoring — BMW 1600